



Chipsmall Limited consists of a professional team with an average of over 10 year of expertise in the distribution of electronic components. Based in Hongkong, we have already established firm and mutual-benefit business relationships with customers from,Europe,America and south Asia,supplying obsolete and hard-to-find components to meet their specific needs.

With the principle of "Quality Parts,Customers Priority,Honest Operation,and Considerate Service",our business mainly focus on the distribution of electronic components. Line cards we deal with include Microchip,ALPS,ROHM,Xilinx,Pulse,ON,Everlight and Freescale. Main products comprise IC,Modules,Potentiometer,IC Socket,Relay,Connector.Our parts cover such applications as commercial,industrial, and automotives areas.

We are looking forward to setting up business relationship with you and hope to provide you with the best service and solution. Let us make a better world for our industry!



Contact us

Tel: +86-755-8981 8866 Fax: +86-755-8427 6832

Email & Skype: info@chipsmall.com Web: www.chipsmall.com

Address: A1208, Overseas Decoration Building, #122 Zhenhua RD., Futian, Shenzhen, China



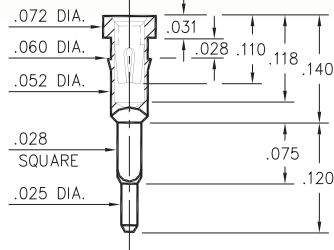
PIN RECEPTACLES

FOR .015" - .025" DIAMETER PINS

7132

7132-0-15-XX-30-XX-04-0

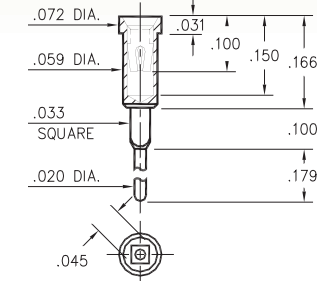
Square press-fit for .032 ± .002 plated through-hole



8445

8445-0-15-XX-30-XX-04-0

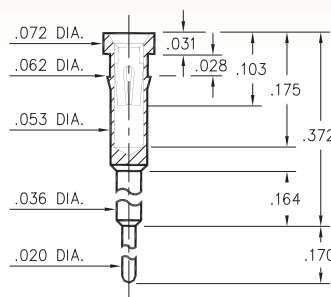
Square press-fit for .039 ± .002 plated through-hole



1038

1038-0-15-XX-30-XX-04-0

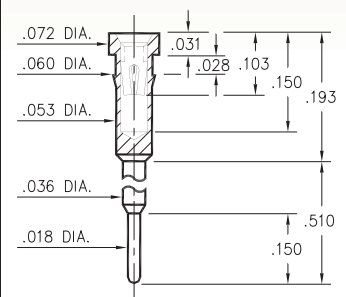
Press-fit in .059 mounting hole



1261

1261-0-15-XX-30-XX-04-0

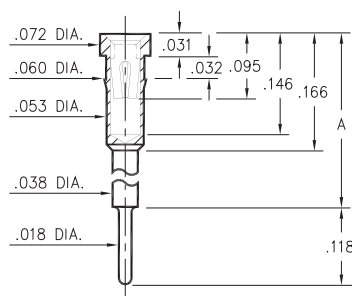
Press-fit in .057 mounting hole



0153

0153-X-15-XX-30-XX-04-0

Press-fit in .057 mounting hole

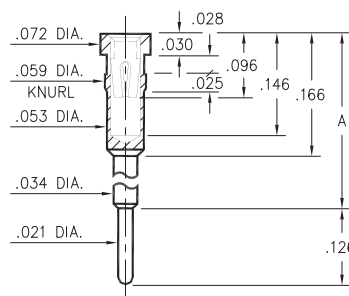


| Basic Part Number | Height A |
|-------------------|----------|
| 0153-1 | .236 |
| 0153-2 | .315 |
| 0153-3 | .402 |
| 0153-4 | .472 |
| 0153-5 | .594 |
| 0153-6 | .699 |

1602/1610

16XX-0-15-XX-30-XX-04-0

Press-fit in .057 mounting hole

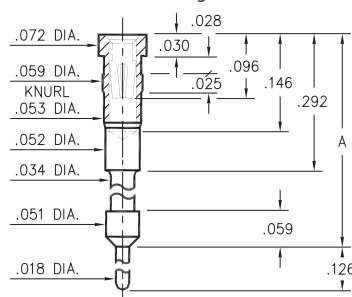


| Basic Part Number | Height A |
|-------------------|----------|
| 1602-0 | .441 |
| 1610-0 | .642 |

0903/0904

090X-0-15-XX-30-XX-04-0

Press-fit in .057 mounting hole

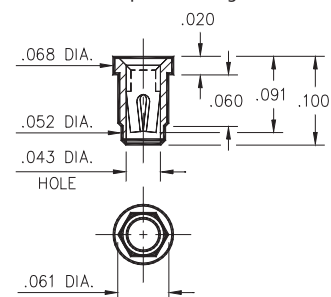


| Basic Part Number | Height A |
|-------------------|----------|
| 0903-0 | .841 |
| 0904-0 | 1.141 |

8252

8252-0-15-XX-30-XX-10-0

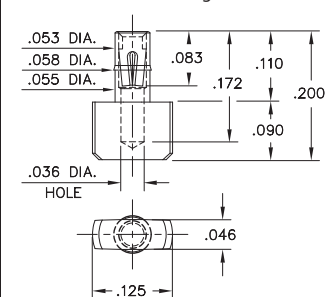
Press-fit in .057 plated through-hole



4078

4078-0-15-XX-30-XX-40-0

Press-fit in .057 mounting hole



SPECIFICATIONS:

Shell Material: Brass Alloy 360, 1/2 Hard

Contact Material: Beryllium Copper Alloy 172, HT

Dimensions: Inches

Tolerances On: Lengths: ± .005

Diameters: ± .002

Angles: ± 2°



ORDER CODE: XXXX - X - 15 - XX - 30 - XX - XX - 0

BASIC PART #

SPECIFY SHELL FINISH:

- 01 200 μ" TIN/LEAD OVER NICKEL
- ◆ 80 200 μ" TIN OVER NICKEL (RoHS)
- ◆ 15 10 μ" GOLD OVER NICKEL (RoHS)

SPECIFY CONTACT FINISH:

- 02 100 μ" TIN/LEAD OVER NICKEL
- ◆ 84 100 μ" TIN OVER NICKEL (RoHS)
- ◆ 27 30 μ" GOLD OVER NICKEL (RoHS)

SELECT CONTACT:

#30 CONTACT (DATA ON PAGE 253)

(For alternate contact choices, see groups B and C on page 248)

