



Chipsmall Limited consists of a professional team with an average of over 10 year of expertise in the distribution of electronic components. Based in Hongkong, we have already established firm and mutual-benefit business relationships with customers from,Europe,America and south Asia,supplying obsolete and hard-to-find components to meet their specific needs.

With the principle of “Quality Parts,Customers Priority,Honest Operation,and Considerate Service”,our business mainly focus on the distribution of electronic components. Line cards we deal with include Microchip,ALPS,ROHM,Xilinx,Pulse,ON,Everlight and Freescale. Main products comprise IC,Modules,Potentiometer,IC Socket,Relay,Connector.Our parts cover such applications as commercial,industrial, and automotives areas.

We are looking forward to setting up business relationship with you and hope to provide you with the best service and solution. Let us make a better world for our industry!



## Contact us

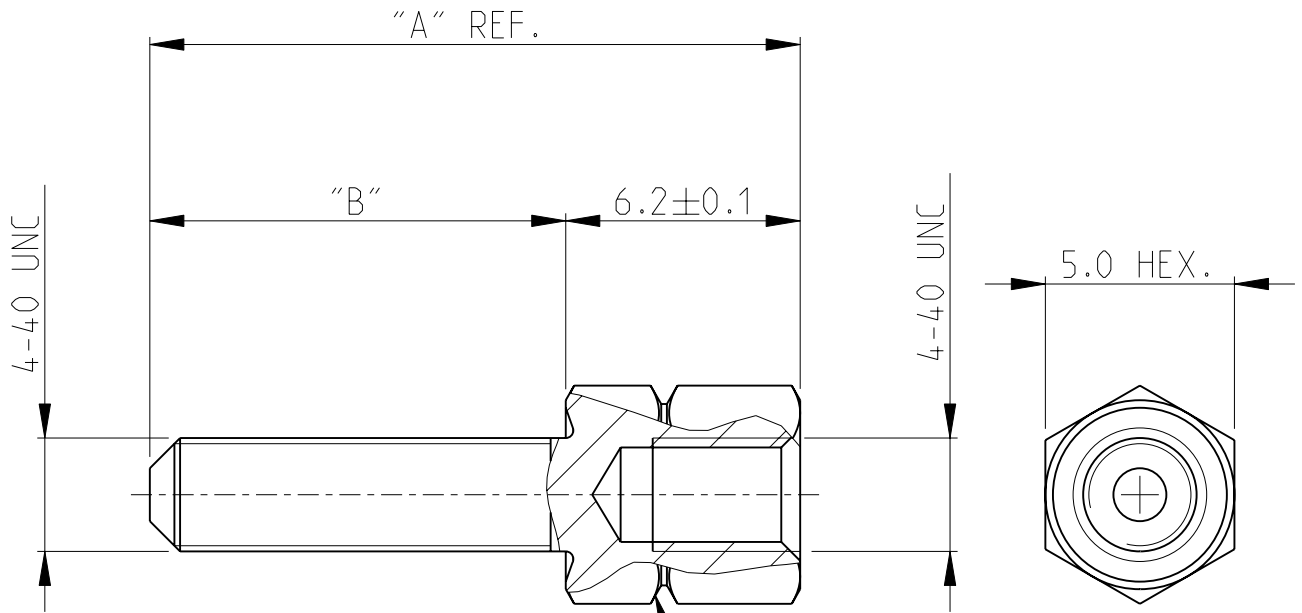
Tel: +86-755-8981 8866 Fax: +86-755-8427 6832

Email & Skype: info@chipsmall.com Web: www.chipsmall.com

Address: A1208, Overseas Decoration Building, #122 Zhenhua RD., Futian, Shenzhen, China



LOC	DIST	REVISIONS					
AI	-	P	LTR	DESCRIPTION	DATE	DWN	APVD
		F	H-9720		21APR92	SM	CVT
		G1	REDRAWN		6JUN05	ACK	MS
		G2	REVISED PER ECO-10-00045		12JAN10	KK	AEG
		J	ECR-11-005934		28MAR11	RK	KMA



NOTE

1. OBSOLETE PARTS: OBSOLETE CIS STERMLINING PER D.RENAUD/D.SINSI
2. MAXIMUM MOUNTING TORQUE 0,6 Nm.

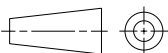
	9,2	3,0	PLAIN	ARCAP	3-828 102-3	
	9,2	3,0	TINPLATED	BRASS	3-828 102-1	
	17,2	11,0	PLAIN	ARCAP	2-828 102-3	
	17,2	11,0	TINPLATED	BRASS	2-828 102-1	
	15,9	9,7	PLAIN	ARCAP	1-828 102-3	
	15,9	9,7	TINPLATED	BRASS	1-828 102-1	
1	OBSOLETE	11,2	5,0	PLAIN	ARCAP	828 102-3
		11,2	5,0	TINPLATED	BRASS	828 102-1
	DIM. "A"	DIM. "B"	FINISH	MATERIAL	PARTNUMBER	

DIMENSIONS:

mm

TOLERANCES UNLESS OTHERWISE SPECIFIED:

0 PLC	±
1 PLC	±0.2
2 PLC	±0.2
3 PLC	±
4 PLC	±
ANGLES	±2°



DWN G.ACKERMANN 06JUN2005	MATERIAL -	FINISH -
CHK M.SCHAARSCHMIDT 06JUN2005	TE Connectivity	
APVD G.FELDMEIER 06JUN2005		
PRODUCT SPEC -	NAME SCREW LOCK, FEMALE HD-SERIES BEFESTIGUNGSSCHRAUBE, BUCHSENLEISTE	
APPLICATION SPEC -	SIZE A 4	CAGE CODE 00779
WEIGHT -	DRAWING NO C-828102	RESTRICTED TO -
CUSTOMER DRAWING		SCALE 5:1
		SHEET 1 OF 1
		REV J

2005

RELEASED FOR PUBLICATION

TYCO ELECTRONICS CORPORATION ALL RIGHTS RESERVED.

© COPYRIGHT 2000

THIS DRAWING IS UNPUBLISHED