



Chipsmall Limited consists of a professional team with an average of over 10 year of expertise in the distribution of electronic components. Based in Hongkong, we have already established firm and mutual-benefit business relationships with customers from,Europe,America and south Asia,supplying obsolete and hard-to-find components to meet their specific needs.

With the principle of “Quality Parts,Customers Priority,Honest Operation,and Considerate Service”,our business mainly focus on the distribution of electronic components. Line cards we deal with include Microchip,ALPS,ROHM,Xilinx,Pulse,ON,Everlight and Freescale. Main products comprise IC,Modules,Potentiometer,IC Socket,Relay,Connector.Our parts cover such applications as commercial,industrial, and automotives areas.

We are looking forward to setting up business relationship with you and hope to provide you with the best service and solution. Let us make a better world for our industry!



Contact us

Tel: +86-755-8981 8866 Fax: +86-755-8427 6832

Email & Skype: info@chipsmall.com Web: www.chipsmall.com

Address: A1208, Overseas Decoration Building, #122 Zhenhua RD., Futian, Shenzhen, China



Plugs, Jacks, Adapters

F type plugs are available in three different crimp styles: two piece with separate ferrules, one piece crimp with a short crimp body and a one piece crimp with a long body. Also, a twist-on type for tool-less installations. Jacks for bulkhead, inline, or PC board, and a variety of adapters are all machined brass construction.

Part Number	Description	RG/U Cable	Fig. No.
810A209A	2 Piece Crimp Plug, Short Ferrule	6	117
810A209D	2 Piece Crimp Plug, Short Ferrule	11	117
810A209G	2 Piece Crimp Plug, Short Ferrule	59	117
810B209G	2 Piece Crimp Plug, Long Ferrule	59	118
810D209A	2 Piece Crimp Plug, Short Ferrule	6	119
810A209MV	4 Pc Crimp Mini Coax. Uses BD11007 Tool	174	117A
810D209D	1 Piece Crimp Plug, Short Ferrule	11	119
810D209G	1 Piece Crimp Plug, Short Ferrule	59	119
810E209A	1 Piece Crimp Plug, Long Ferrule	6	120
810E209D	1 Piece Crimp Plug, Long Ferrule	11	120
810E209G	1 Piece Crimp Plug, Long Ferrule	59	120
810A409A	Twist-On	6	121
810A409G	Twist-On	59	121
810P209A	Push-On	6	122
810P209G	Push-On	59	122
816B519	Male Bulkhead Receptacle. 3/8-32 THD I.D.	Any	130A
826B519	Bulkhead Jack, Solder Tab	Any	123
832A519N	Inline Female/Female W/Nut & Washer	N/A	124
830A509	Inline, Male/Male	N/A	125
831B509	Inline Female/Male Push-On	N/A	125A
832A519	Inline Female/Female	N/A	126
843A509	"T" Adapter, Female/Male/Female	N/A	127
845A509	"T" Adapter, Female/Female/Female	N/A	128
851A509	Right Angle Adapter, Male/Female	N/A	129
F0884	75 Ohm Male Terminator	N/A	130

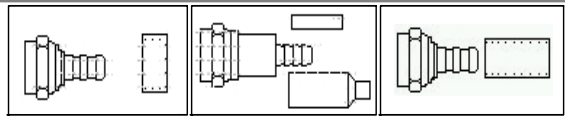


Fig. 117

Fig. 117A

Fig. 118

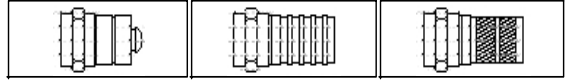


Fig. 119

Fig. 120

Fig. 121

Also See Push-EZ™ Next Page

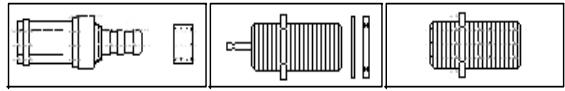


Fig. 122

Fig. 123

Fig. 124

Adapters & Terminators

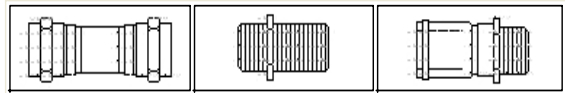


Fig. 125

Fig. 126

Fig. 125A

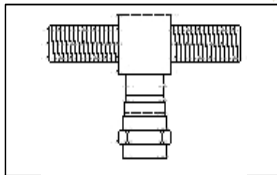


Fig. 127

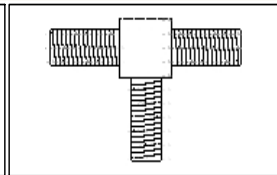


Fig. 128

This recessed male acts as a jack & allows for a replaceable female end by using a 832A519 adapter. Also, this can be used to accommodate any adapter with a female F interface on one side. The other end can be BNC, TNC, or any style available. (See adapter pages)

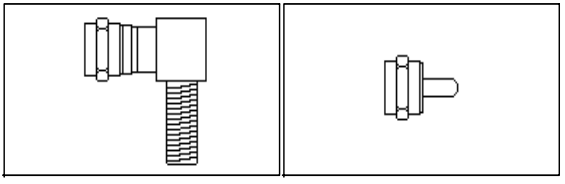


Fig. 129

Fig. 130

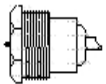


Fig. 130A2

3/8 - 32 Internal Thd. 1/2 - External Thd.

