



Chipsmall Limited consists of a professional team with an average of over 10 year of expertise in the distribution of electronic components. Based in Hongkong, we have already established firm and mutual-benefit business relationships with customers from,Europe,America and south Asia,supplying obsolete and hard-to-find components to meet their specific needs.

With the principle of “Quality Parts,Customers Priority,Honest Operation,and Considerate Service”,our business mainly focus on the distribution of electronic components. Line cards we deal with include Microchip,ALPS,ROHM,Xilinx,Pulse,ON,Everlight and Freescale. Main products comprise IC,Modules,Potentiometer,IC Socket,Relay,Connector.Our parts cover such applications as commercial,industrial, and automotives areas.

We are looking forward to setting up business relationship with you and hope to provide you with the best service and solution. Let us make a better world for our industry!



Contact us

Tel: +86-755-8981 8866 Fax: +86-755-8427 6832

Email & Skype: info@chipsmall.com Web: www.chipsmall.com

Address: A1208, Overseas Decoration Building, #122 Zhenhua RD., Futian, Shenzhen, China



Miniature limit switch

→ Series 83 800 with plug-in body

- Thermoplastic case
- Compact dimensions



Main specifications

Housing	Features	Top-mounted plunger	Top-mounted plunger with roller, threaded barrel	Rotary head, momentary action to right and left
		83 800 101	83 802 001	83 803 001
Thermoplastic	Plug-in body			
General characteristics				
Minimum operating force (N)		10	10	7
Minimum total travel force (N)		22	22	18
Minimum operating travel (mm)		1.5	1.5	15
Differential travel (mm)		0.4	0.4	6
Maximum total travel (mm)		5	5	60
Mechanical life (millions of operations) mini.		10 ⁷	10 ⁷	10 ⁷
Operating temperature (°C)		-10 → +70	-20 → +70	-20 → +70
Protection rating		IP65	IP55	IP55
Weight (g)		50	57	60

General characteristics

Conformity to standards	NFC 20030 class I IEC 356.1 - EN 60204.1
Protection	Single-pole
Electrical characteristics	
Assigned insulation voltage (Ui) V	250
Thermal current (Ith) A	10
Assigned operating current (Ie)	5
Connections	
Cable	On connector : W1 screw terminals - max. wire cross-section 2.5 mm ²
Connection	For No. 9 sealing gland, 15.2 Ø, 1.411 pitch
Approvals	UL/CSA please consult us

Principles

Function

Four-terminal double break two-way contact element (form Za). The contacts must be of the same polarity.

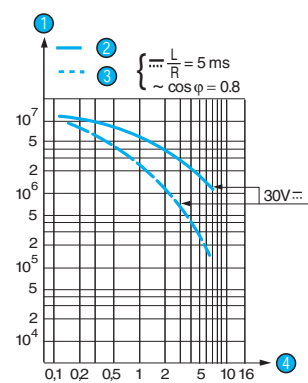
A - For 83 803



B - Other types



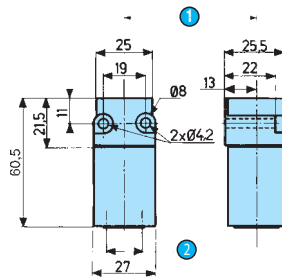
Curves



Dimensions

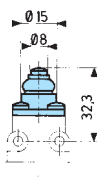
→ Product

Casing

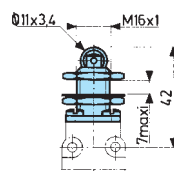


- 1 Axis of head rotation
- 2 For No. 9 sealing gland

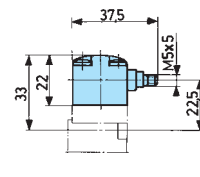
83 800 1



83 802

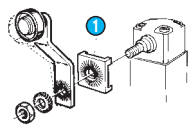
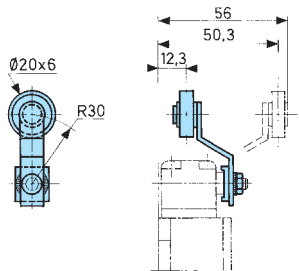


83 803



→ Mounting accessories

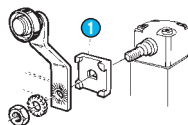
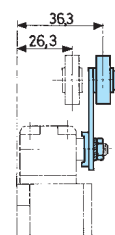
79 210 997 (for 83 803)



1 Block 1

Lever settings or positions dictated by direction in which block 1 is fitted

79 210 998 (for 83 803)



1 Block 1

Other information

Accessories for 83 803

Galvanized, passivated steel lever

Thermoplastic roller

Supplied with nut, washer and locating block loose