



Chipsmall Limited consists of a professional team with an average of over 10 year of expertise in the distribution of electronic components. Based in Hongkong, we have already established firm and mutual-benefit business relationships with customers from,Europe,America and south Asia,supplying obsolete and hard-to-find components to meet their specific needs.

With the principle of “Quality Parts,Customers Priority,Honest Operation,and Considerate Service”,our business mainly focus on the distribution of electronic components. Line cards we deal with include Microchip,ALPS,ROHM,Xilinx,Pulse,ON,Everlight and Freescale. Main products comprise IC,Modules,Potentiometer,IC Socket,Relay,Connector.Our parts cover such applications as commercial,industrial, and automotives areas.

We are looking forward to setting up business relationship with you and hope to provide you with the best service and solution. Let us make a better world for our industry!



Contact us

Tel: +86-755-8981 8866 Fax: +86-755-8427 6832

Email & Skype: info@chipsmall.com Web: www.chipsmall.com

Address: A1208, Overseas Decoration Building, #122 Zhenhua RD., Futian, Shenzhen, China



Universal limit switches

→ Series 83 840 0 Standard

- Adjustable metal head
- 4 positions 90°
- Metal case



Main specifications

	Steel plunger	Reinforced lever with plastic roller	Stepped adjustment roller lever
Housing			
Metal			
Action			
Snap action			
General characteristics			
Function	NO+NC	NO+NC	NO+NC
Sequence	0 2,5 6 mm	0 3 6 mm	0 6 11 mm
Snap action	1-2 3-4 1-2 3-4 0,7	1-2 3-4 1-2 3-4 0,7	1-2 3-4 1-2 3-4 1,5
Mechanical characteristics			
Minimum operating force (N)	10	15	8
Minimum operating force (cmN)	-	-	-
Minimum total travel force (N)	22	25	15
Minimum total travel force (cmN)	-	-	-
Mechanical life (operations)	10 ⁷	10 ⁷	10 ⁷
Temperature limits use (°C)	-10 → +70	-10 → +70	-10 → +70
Weight (g)	310	310	310
Comments			
Accessories for 83 843 0 (see Dimensions - Mounting accessories)			
Galvanized, passivated steel lever			
Thermoplastic roller			
Supplied with nut, washer and locating block loose			

General characteristics

Assigned insulation voltage (Ui) V	600
Thermal current (Ith) A	10
Use category	AC 15 : A600 DC 13 : P300

Product adaptations



- Approvals : UL/CSA



Adjustable roller lever	Adjustable lever with idle-return lever	Rotary head with momentary action Action to right and left	Top-mounted plunger with metal roller	Flexible metal lever
83 842 1	83 842 2	83 843 0	83 845 0	83 846 0
NO+NC	NO+NC	NO+NC	NO+NC	NO+NC
8	8	-	10	1.5
-	-	20	-	-
15	15	-	22	2.5
-	-	33	-	-
10 ⁷	10 ⁷	10 ⁷	10 ⁷	10 ⁷
-10 → +70	-10 → +70	-20 → +70	-10 → +70	-10 → +70
310	310	310	300	310

Principles

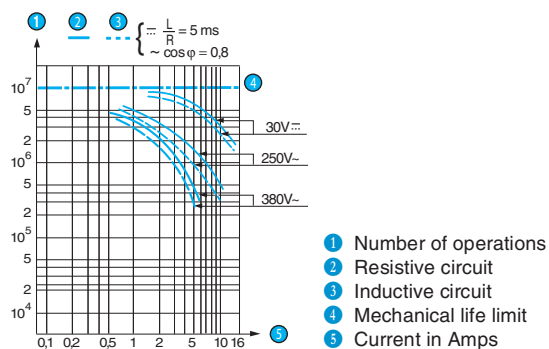
Function

Four-terminal double break two-way contact element (form Za). The contacts must be of the same polarity.



Curves

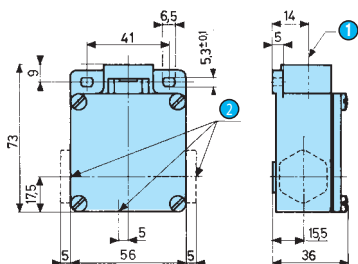
Operating curve for standard version



Dimensions

→ Product

Body

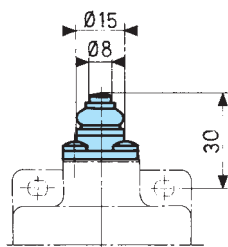


① Axis of head rotation

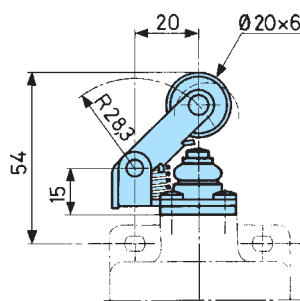
② No. 13 sealing gland

→ Actuators

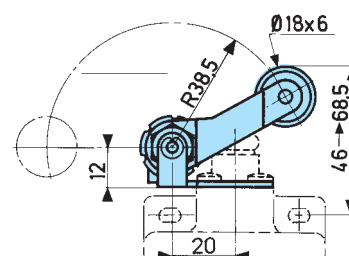
83 840 0



83 841 0

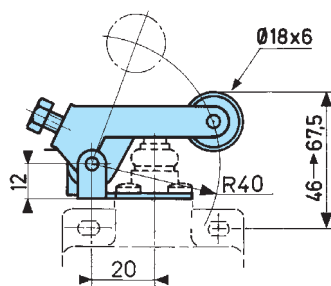


83 842 0

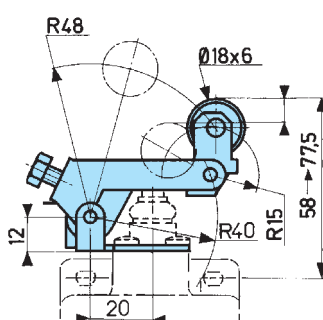


Min. angle between 2 successive adjustments 0°10'

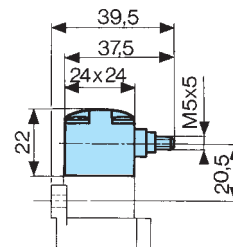
83 842 1



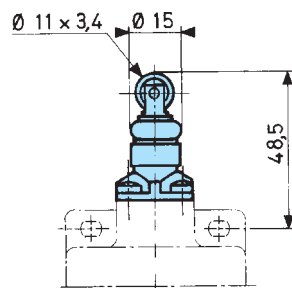
83 842 2



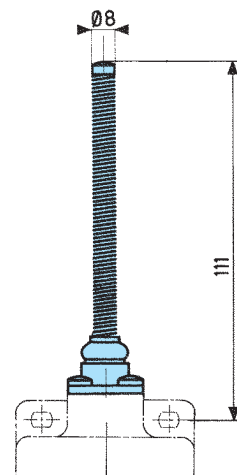
83 843 0



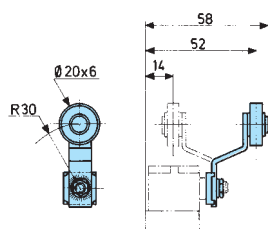
83 845 0



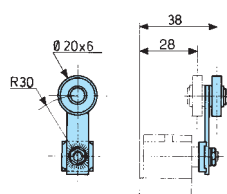
83 846 0



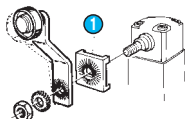
79 210 997 (for 83 843 0)



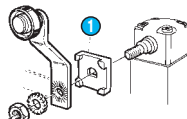
79 210 998 (for 83 843 0)



Lever settings or positions dictated by direction in which block 1 is fitted



① Block 1
Adjustable in 6° steps



① Block 1
Adjustable in 90° steps

Universal limit switches

→ Series 83 840 7 Positive break operation

- Adjustable metal head
- 4 positions 90°
- Plastic or metal cases



Main specifications

		Steel plunger	Reinforced lever with plastic roller
Housing	Action	83 840 7	83 841 7
Metal	Snap action		
General characteristics			
Function		NC	NC
Sequence		0 2,5 4F 6 mm	0 3 4,5F 6 mm
Snap action		1-2 1-2	1-2 1-2
Positive break operation			
Mechanical characteristics			
Minimum operating force (N)		10	15
Minimum operating force (cmN)		-	-
Minimum positive opening force (N)		10	15
Min. positive opening travel (cmN)		-	-
Minimum total travel force (N)		22	25
Minimum total travel force (cmN)		-	-
Mechanical life (operations)		10 ⁷	10 ⁷
Temperature limits use (°C)		-10 → +70	-10 → +70
Weight (g)		310	310

General characteristics

Assigned insulation voltage (Ui) V	600
Thermal current (Ith) A	2.5
Use category	AC 15 : C600 DC 13 : R 300
Short circuit test	Conforms to IEC 947.5.1 paragraph 8.34
Current peak	1000 A at 250 VAC 0.5 < cos φ < 0.7
Short circuit protection (SCPD)	Fuse 10 AgF

Product adaptations



- Approvals : UL/CSA

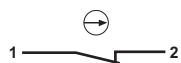


Stepped adjustment roller lever	Adjustable roller lever	Adjustable lever with idle-return lever	Rotary head with momentary action Action to right and left	Top-mounted plunger with metal roller
83 842 7	83 842 8	83 842 9	83 843 7	83 845 7
NC	NC	NC	NC	NC
8	8	8	-	10
-	-	-	20	-
10	10	10	-	10
-	-	-	20	-
15	15	15	-	22
-	-	-	33	-
10 ⁷	10 ⁷	10 ⁷	10 ⁷	10 ⁷
-10 → +70	-10 → +70	-10 → +70	-20 → +70	-10 → +70
310	310	310	310	300

Principles

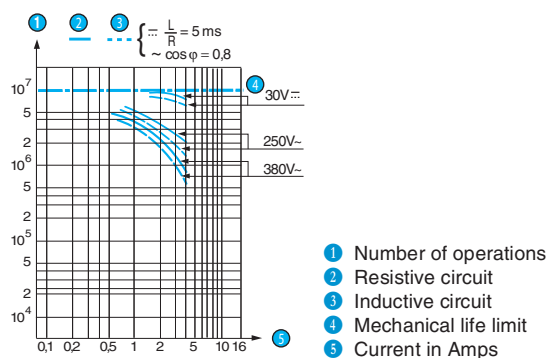
Function

Two-terminal double break contact element (form Y : normally closed contact) with positive break operation.



Curves

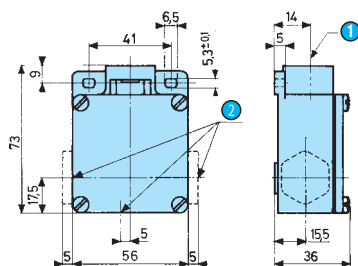
Operating curve for positive break version



Dimensions

→ Product

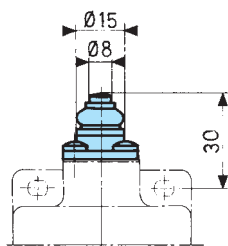
Body



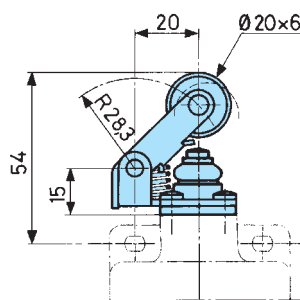
- ① Axis of head rotation
- ② No. 13 sealing gland

→ Actuators

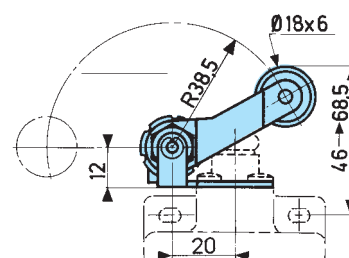
83 840 7



83 841 7

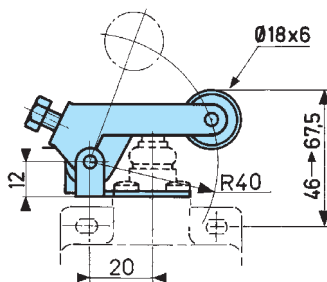


83 842 7

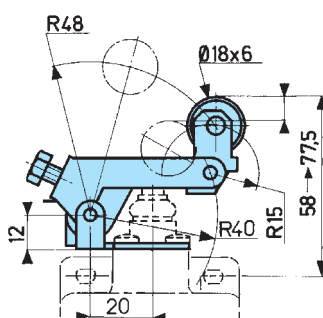


- ① Min. angle between 2 successive adjustments
0°10

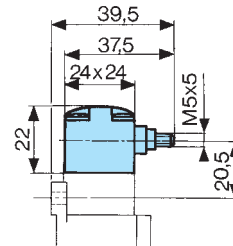
83 842 8



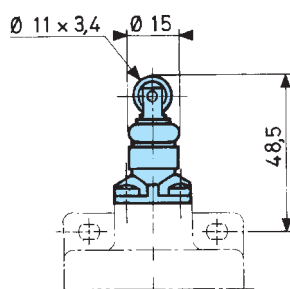
83 842 9



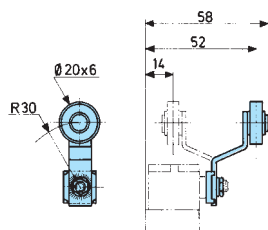
83 843 7



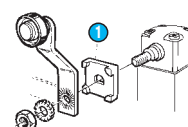
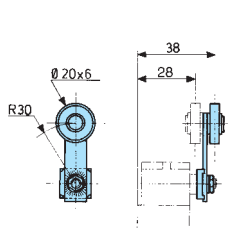
83 845 7



79 210 997 (for 83 843 7)



79 210 998 (for 83 843 7)



- ① Block 1
Block 1 must not be mounted the other way round
Adjustable in 90° steps