



Chipsmall Limited consists of a professional team with an average of over 10 year of expertise in the distribution of electronic components. Based in Hongkong, we have already established firm and mutual-benefit business relationships with customers from,Europe,America and south Asia,supplying obsolete and hard-to-find components to meet their specific needs.

With the principle of “Quality Parts,Customers Priority,Honest Operation,and Considerate Service”,our business mainly focus on the distribution of electronic components. Line cards we deal with include Microchip,ALPS,ROHM,Xilinx,Pulse,ON,Everlight and Freescale. Main products comprise IC,Modules,Potentiometer,IC Socket,Relay,Connector.Our parts cover such applications as commercial,industrial, and automotives areas.

We are looking forward to setting up business relationship with you and hope to provide you with the best service and solution. Let us make a better world for our industry!



Contact us

Tel: +86-755-8981 8866 Fax: +86-755-8427 6832

Email & Skype: info@chipsmall.com Web: www.chipsmall.com

Address: A1208, Overseas Decoration Building, #122 Zhenhua RD., Futian, Shenzhen, China



Conforms to the following standards:

IEC / EN 60947.5.1
Dimensional conformity: NFC 63145
Low voltage directive: 73/23/EEC and 93/68/EEC
Protection from electric shock: NFC 20030 or IEC 60536 Class 1, degree of pollution 3.

Temperature specification: -25°/+70°C -13°/+158°F

Degree of protection:

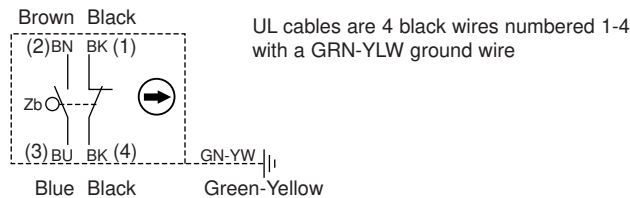
IEC 62529: IP 66/67
NEMA 250: Type 1, 3, 4, 6, 13

Function:

Contact block is SPDT with double break contacts (form Zb). The NC contacts are positive opening. The NO and NC contacts are electrically isolated.

Contact type:

Snap action SPDT-DB



Electrical characteristics

Assigned impulse voltage (Uimp): 2500 V
Assigned insulation voltage (Ui): 500 V
Thermal rating (Ith): 10 A
With standard contacts: Minimum voltage 10V
Minimum current 100mA

Use categories:

Following IEC 947.5.1 AC15 = 250V / 6A
DC13 = 24V / 8A
Following UL 508 A300 - Q150

Electrical protection:

Under IEC 947.5.1
Short-circuit protection (SCPD): 6AgC fuse
Electrical protection by internal earth ground

Connections:

Non-UL: 5 conductor cable H05VF 0.75mm² ext. Ø8mm (Black)
UL: 5 conductor cable (Grey)

Approvals:

UL 508, UL 50

Types

Standard

Roller turned 90°

Standard products 2.0 meter cable* side exit**

Actuator Type

Metal plunger

Metal roller plunger

Metal plunger with threaded barrel

Roller plunger - metal with threaded barrel

Metal roller lever (operates in both directions)

Mechanical characteristics

Operating force minimum oz. (N)

Total travel force minimum oz. (N)

Positive opening force minimum oz. (N)

Mechanical life millions of cycles

Weight oz. (grams)

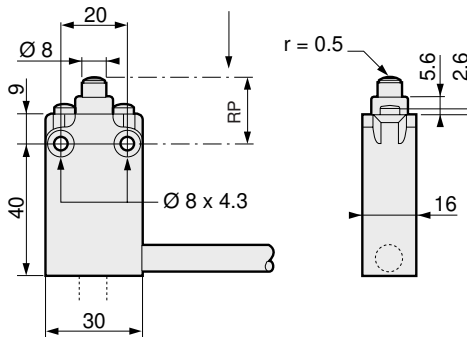
Contact Sequences

Positions given are nominal

Dimensions

mm

83 870 0



(*) For other lengths of cables:

modify the last digit of the part number. For example:

0 = M12 connector output

1 = 1.0 meter cable

2 = 2.0 meter cable (Standard)

3 = 3.0 meter cable

(**) For different cable outputs:

modify the next to the last digit of the part number.:

0 = Cable side exit (Standard)

1 = Cable bottom exit

2 = Connector side exit

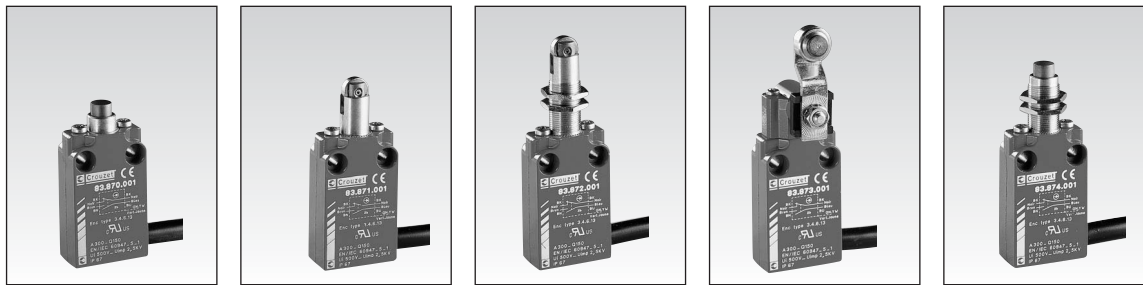
3 = Connector bottom exit

Other information

For different actuator arms, low voltage / low current contacts / low temperature, special contacts, custom wiring harness, etc..., please consult us.

Products and specifications subject to change without notice.

Order/Technical Support – Tel: (800) 677-5311 / FAX: (800) 677-3865 / www.crouzet-usa.com

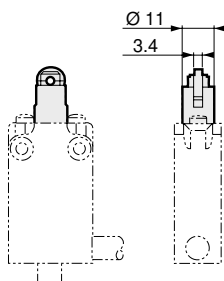


83 870 0	83 871 0	83 872 0	83 873 0	83 874 0
	83 875 0	83 876 0		
83 870 102	83 871 102	83 872 102	83 873 102	83 874 102
83 870 103	83 871 103	83 872 103	83 873 103	83 874 103

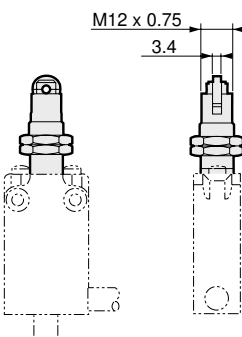
36 (10)	36 (10)	36 (10)	22 in.oz. (15cmN)	36 (10)
108 (30)	108 (30)	108 (30)	52 in.oz. (35cmN)	108 (30)
100 (28)	100 (28)	100 (28)	22 in.oz. (15cmN)	100 (28)
10	10	10	10	10
10.3 (290)	10.4 (295)	11.1 (315)	10.3 (290)	10.9 (310)

BK-BK BN-BU	BK-BK BN-BU	BK-BK BN-BU	BK-BK BN-BU	BK-BK BN-BU
RP 19,8	RP 29,9	RP 45	RP 0°	RP 34,8
TP 18	TP 28	TP 43,1	TP 27°	TP 33
POP 15,8	POP 25,75	POP 40,85	POP 58°	POP 30,8
OL 14,7	OL 24,75	OL 39,85	OL 69°	OL 29,7

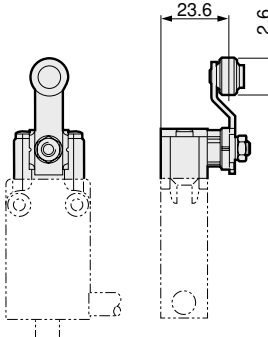
83 871 0



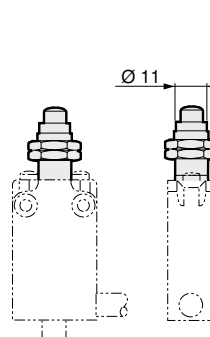
83 872 0



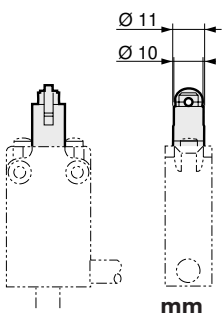
83 873 0



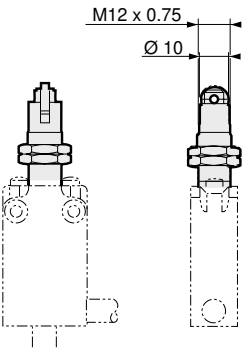
83 874 0



83 875 0



83 876 0



To order, please specify:

Standard products

2 Part number

Example : Limit switch 83 871 102; Cable length = 2m

Standard products, non stocked

1 Type

Examples : Limit switch 83 871 103; cable length = 3 m - Limit switch 83 871 006; cable length = 6 m

Products and specifications subject to change without notice.

Order/Technical Support – Tel: (800) 677-5311 / FAX: (800) 677-3865 / www.crouzet-usa.com