



Chipsmall Limited consists of a professional team with an average of over 10 year of expertise in the distribution of electronic components. Based in Hongkong, we have already established firm and mutual-benefit business relationships with customers from,Europe,America and south Asia,supplying obsolete and hard-to-find components to meet their specific needs.

With the principle of “Quality Parts,Customers Priority,Honest Operation,and Considerate Service”,our business mainly focus on the distribution of electronic components. Line cards we deal with include Microchip,ALPS,ROHM,Xilinx,Pulse,ON,Everlight and Freescale. Main products comprise IC,Modules,Potentiometer,IC Socket,Relay,Connector.Our parts cover such applications as commercial,industrial, and automotives areas.

We are looking forward to setting up business relationship with you and hope to provide you with the best service and solution. Let us make a better world for our industry!



Contact us

Tel: +86-755-8981 8866 Fax: +86-755-8427 6832

Email & Skype: info@chipsmall.com Web: www.chipsmall.com

Address: A1208, Overseas Decoration Building, #122 Zhenhua RD., Futian, Shenzhen, China

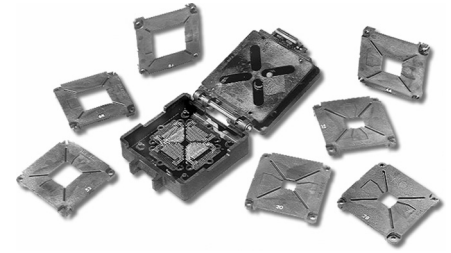




Series 537 Insert Plates for Universal PLCC ZIF Test Socket

FEATURES

- Conveniently Hand-insert 7 Separate Insert Plates into 'Live Bug' Universal PLCC ZIF Test Socket (P/N 84-537-21) to hold 7 Differently-sized PLCC Footprints
- Four Mounting Holes (2 Bifurcated) Mate with Mounting Post in Socket Base for Secure Assembly



GENERAL SPECIFICATIONS

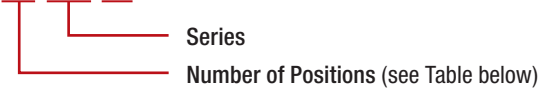
- **INSERT:** black UL 94V-0 glass-filled Polyphenylene Sulfide (PPS)
- **OPERATING TEMPERATURE:** -85°F [-65°C] to 500°F [260°C]
- **CONTACT BLOCK AND LATCH HINGE:** available individually

MOUNTING CONSIDERATIONS

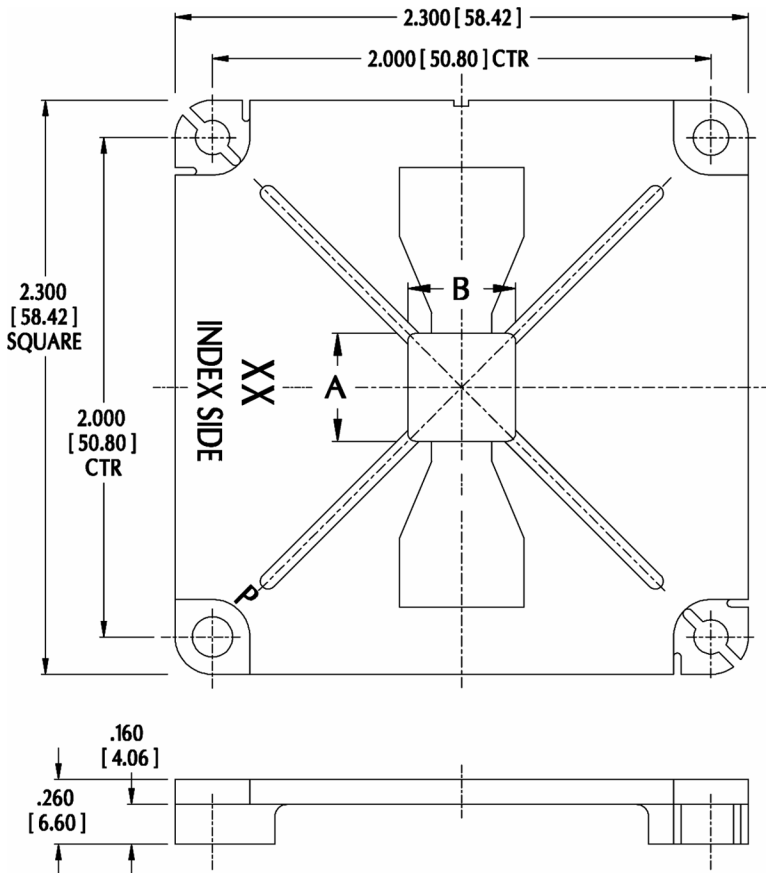
- **SUGGESTED PCB HOLE SIZE:** 0.035 ±0.002 [0.89 ±0.05] dia.

ORDERING INFORMATION

XX-537-20



USE P/N 1110832 WHEN ORDERING ALL SEVEN INSERT PLATES



No. Positions	Dim "A"	Dim. "B"
20	0.395 to 0.397 [10.03 to 10.08]	0.395 to 0.397 [10.03 to 10.08]
28	0.495 to 0.497 [12.57 to 12.62]	0.495 to 0.497 [12.57 to 12.62]
32	0.495 to 0.497 [12.57 to 12.62]	0.595 to 0.597 [15.11 to 15.16]
44	0.695 to 0.697 [17.65 to 17.70]	0.695 to 0.697 [17.65 to 17.70]
52	0.795 to 0.797 [20.19 to 20.24]	0.795 to 0.797 [20.19 to 20.24]
68	0.995 to 0.997 [25.27 to 25.32]	0.995 to 0.997 [25.27 to 25.32]
84	1.195 to 1.197 [30.35 to 30.40]	1.195 to 1.197 [30.35 to 30.40]

ALL DIMENSIONS: INCHES [MILLIMETERS]
 ALL TOLERANCES: ±0.005 [0.13] UNLESS OTHERWISE SPECIFIED
 FOR TEST SOCKET, SEE [DATA SHEET 10010](#)
 CONSULT FACTORY FOR OTHER SIZES AND CONFIGURATIONS

CUSTOMIZATION: ARIES SPECIALIZES IN CUSTOM DESIGN AND PRODUCTION. SPECIAL MATERIALS, PLATINGS, SIZES, AND CONFIGURATIONS CAN BE FURNISHED, DEPENDING ON QUANTITY.

ARIES RESERVES THE RIGHT TO CHANGE PRODUCT GENERAL SPECIFICATIONS WITHOUT NOTICE

PRINTOUTS OF THIS DOCUMENT MAY BE OUT-OF-DATE AND SHOULD BE CONSIDERED UNCONTROLLED



ARIES
ELECTRONICS, INC.

2609 Bartram Road • Bristol, PA 19007-6810 USA
 TEL 215-781-9956 • FAX 215-781-9845
WWW.ARIESELEC.COM • INFO@ARIESELEC.COM



10012
Rev. 2.1
1 of 1