



Chipsmall Limited consists of a professional team with an average of over 10 year of expertise in the distribution of electronic components. Based in Hongkong, we have already established firm and mutual-benefit business relationships with customers from,Europe,America and south Asia,supplying obsolete and hard-to-find components to meet their specific needs.

With the principle of “Quality Parts,Customers Priority,Honest Operation,and Considerate Service”,our business mainly focus on the distribution of electronic components. Line cards we deal with include Microchip,ALPS,ROHM,Xilinx,Pulse,ON,Everlight and Freescale. Main products comprise IC,Modules,Potentiometer,IC Socket,Relay,Connector.Our parts cover such applications as commercial,industrial, and automotives areas.

We are looking forward to setting up business relationship with you and hope to provide you with the best service and solution. Let us make a better world for our industry!



Contact us

Tel: +86-755-8981 8866 Fax: +86-755-8427 6832

Email & Skype: info@chipsmall.com Web: www.chipsmall.com

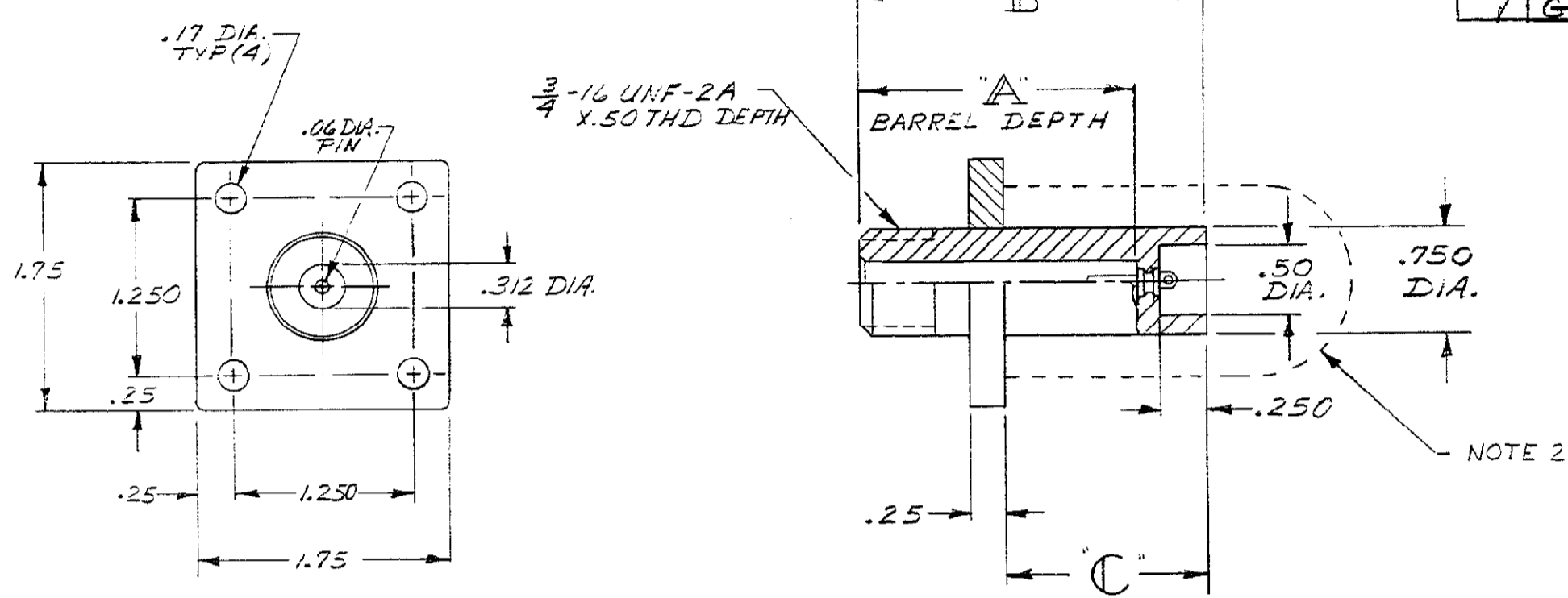
Address: A1208, Overseas Decoration Building, #122 Zhenhua RD., Futian, Shenzhen, China



MADE IN AMERICAN PROJECTION
 ALL RIGHTS RESERVED. AMP PRODUCTS COVERED BY PATENTS AND/OR PATENTS PENDING.

THIS DRAWING IS THE PROPERTY OF AMP INCORPORATED. NO PARTS TO BE REPRODUCED OR COPIED IN ANY MANNER WITHOUT THE WRITTEN PERMISSION OF AMP INCORPORATED.

REVISIONS				
ZONE	LTR	DESCRIPTION	DATE	APPROVED
	A	REVISED & REDRAWN	4-14-69	[Signature]
	B	ADDED DASH 11&12	12-19-69	[Signature]
	C	PIN WAS 849439	6-5-70	[Signature]
	D	ADDED DASH 13&14	9-2-71	[Signature]
	E	OBSOLETE -1	11-18-86	[Signature]
	F	OBSOLETE -1 ECN 53622	1-89	[Signature]
	G	REACTIVATED -1 PERL DF-4477	4/3/79	[Signature]



PART NO	A	B	C	TERM. CONTACT PLATING	
				TIN	GOLD
840579-1	2.00	2.38	1.38	X	
840579-2	2.00	2.38	1.38		X
840579-3	2.00	2.38	1.50	X	
840579-4	2.00	2.38	1.50		X
840579-5	1.81	2.19	1.50	X	
840579-6	1.81	2.19	1.50		X
840579-7	2.00	2.38	1.62	X	
840579-8	2.00	2.38	1.62		X
840579-9	2.00	2.38	1.25	X	
1-840579-0	2.00	2.38	1.25		X
1-840579-1	1.81	2.19	1.00	X	
1-840579-2	1.81	2.19	1.00		X
1-840579-3	2.00	2.38	1.19	X	
1-840579-4	2.00	2.38	1.19		X

NOTE:
 1. RECEPTACLE TO MATE WITH AMP LGH-3 LEAD ASSEMBLY. AVAILABLE SEPARATELY. WHEN ORDERING LEAD ASSEMBLY WITH RECEPTACLE, MUST SPECIFY GROUND PER Jumper RECOMMENDATIONS.
 2. CUSTOMER MUST PROTECT THE RECEPTACLES BACK END AGAINST ARC OVER & BREAKDOWN.

PRINT DIST LGH-30 DF

QTY REQD	QTY REQD	ITEM NO.	DWG SIZE	PART OR IDENTIFYING NO.	NOMENCLATURE OR DESCRIPTION	SYMBOL
-2	-1					
				CONTRACT NO.	PARTS LIST	
				DR L. GEIB 2-27-69	AMP INCORPORATED CAPITRON DIVISION ELIZABETHTOWN, PENNSYLVANIA	
				CHK	NAME FLANGED RECEPTACLE (FOR BULKHEAD APPLICATION) LGH-3	
				APPD KEN K. 3-3-69	SIZE CODE IDENT NO. NUMBER C 89110 840579	
				APPD	SCALE WT SHEET	
				DSGN APPD		
				OTHER APPD		
NEXT ASSY		FINAL ASSY		NEXT ASSY		USED ON
QTY REQD		APPLICATION				