



Chipsmall Limited consists of a professional team with an average of over 10 year of expertise in the distribution of electronic components. Based in Hongkong, we have already established firm and mutual-benefit business relationships with customers from,Europe,America and south Asia,supplying obsolete and hard-to-find components to meet their specific needs.

With the principle of "Quality Parts,Customers Priority,Honest Operation,and Considerate Service",our business mainly focus on the distribution of electronic components. Line cards we deal with include Microchip,ALPS,ROHM,Xilinx,Pulse,ON,Everlight and Freescale. Main products comprise IC,Modules,Potentiometer,IC Socket,Relay,Connector.Our parts cover such applications as commercial,industrial, and automotives areas.

We are looking forward to setting up business relationship with you and hope to provide you with the best service and solution. Let us make a better world for our industry!



Contact us

Tel: +86-755-8981 8866 Fax: +86-755-8427 6832

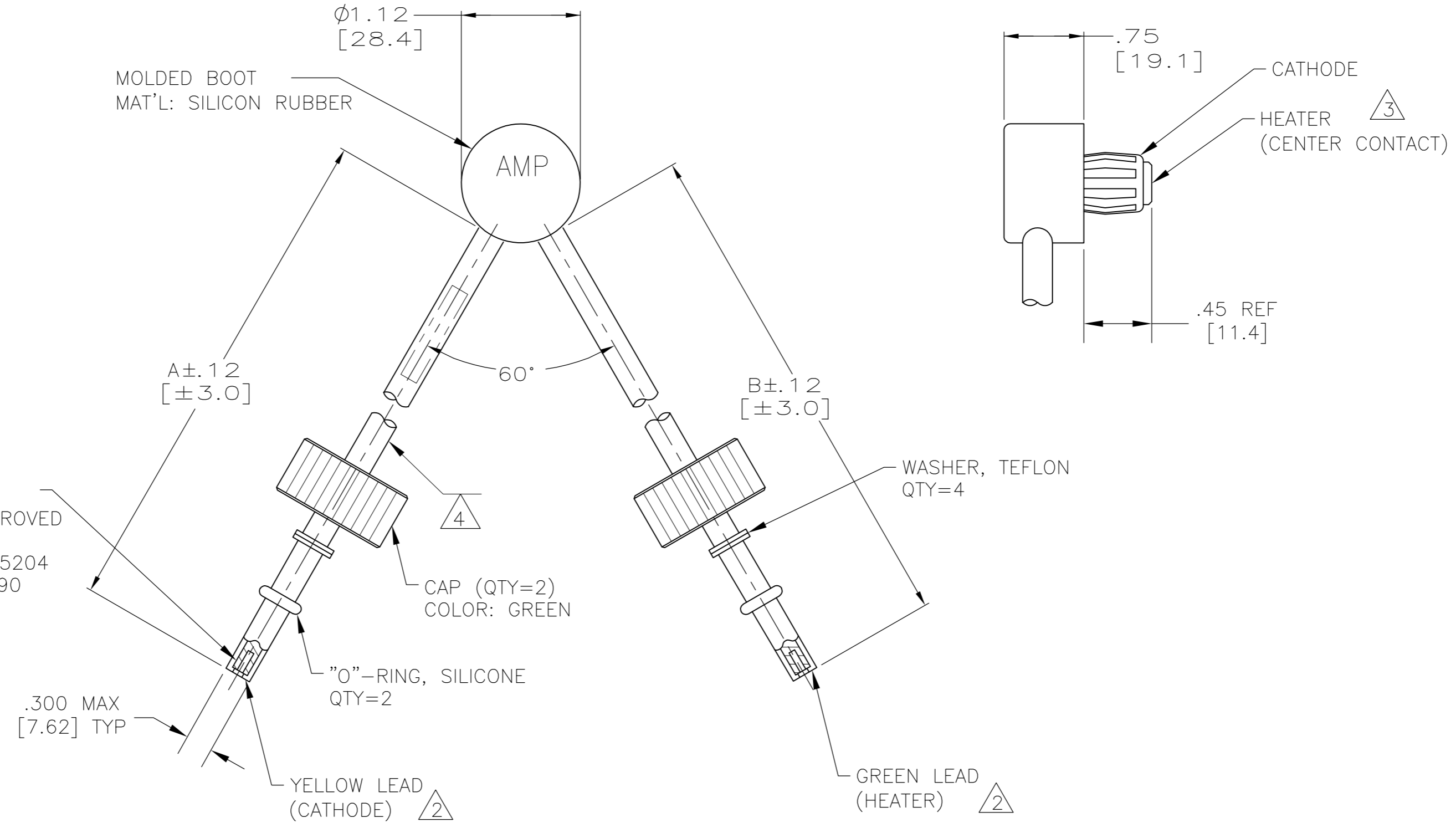
Email & Skype: info@chipsmall.com Web: www.chipsmall.com

Address: A1208, Overseas Decoration Building, #122 Zhenhua RD., Futian, Shenzhen, China



THIS DRAWING IS UNPUBLISHED. RELEASED FOR PUBLICATION
 © COPYRIGHT - By -2123 ALL RIGHTS RESERVED.

LOC		DIST		REVISIONS			
P	LTR	DESCRIPTION		DATE	DWN	APVD	
	R	REV PER ECO 13-005473		18APR2013	CT	DE	



SOCKET; SIZE #16 (QTY=2)
 MAT'L : COPPER ALLOY APPROVED
 PER MIL-C-39029
 FINISH: GOLD PER MIL-G-45204
 OVER NICKEL PER QQ-N-290

	14.12 [360.7]	14.12 [360.7]	840713-4
OBSOLETE	12.00 [304.8]	12.00 [304.8]	840713-3
OBSOLETE	6.00 [152.4]	6.00 [152.4]	840713-2
OBSOLETE	11.00 [279.4]	11.00 [279.4]	840713-1
	"B" DIM	"A" DIM	PART NO.

- MARK PER MIL-STD-130 ON YELLOW LEAD.
- TO MATE WITH ALL LGH-3 RECEPTACLES.
- TO MATE WITH MAGNETRON 4J50 AND OTHERS HAVING SIMILAR TERMINALS.
- YELLOW WIRE DOES NOT HAVE A SOLID YELLOW INSULATION BUT IS A WHITE WIRE WITH A YELLOW STRIPE.

THIS DRAWING IS A CONTROLLED DOCUMENT.

DIMENSIONS: INCHES [mm]	TOLERANCES UNLESS OTHERWISE SPECIFIED: REMOVE BURRS, BREAK SHARP EDGES .015" R MAX	DWN 7-23-92 C.C.THOMAS	CHK 7-27-92 S.GLATFELTER	APVD 7-27-92 S.GLATFELTER	NAME MAGNETRON CONNECTOR, LGH-3
MATERIAL	FINISH	WEIGHT	SCALE 1:1	SHEET 1 OF 1	REV R

TE Connectivity

SIZE A2 CAGE CODE 00779 DRAWING NO. 840713

CUSTOMER DRAWING