



Chipsmall Limited consists of a professional team with an average of over 10 year of expertise in the distribution of electronic components. Based in Hongkong, we have already established firm and mutual-benefit business relationships with customers from,Europe,America and south Asia,supplying obsolete and hard-to-find components to meet their specific needs.

With the principle of “Quality Parts,Customers Priority,Honest Operation,and Considerate Service”,our business mainly focus on the distribution of electronic components. Line cards we deal with include Microchip,ALPS,ROHM,Xilinx,Pulse,ON,Everlight and Freescale. Main products comprise IC,Modules,Potentiometer,IC Socket,Relay,Connector.Our parts cover such applications as commercial,industrial, and automotives areas.

We are looking forward to setting up business relationship with you and hope to provide you with the best service and solution. Let us make a better world for our industry!



Contact us

Tel: +86-755-8981 8866 Fax: +86-755-8427 6832

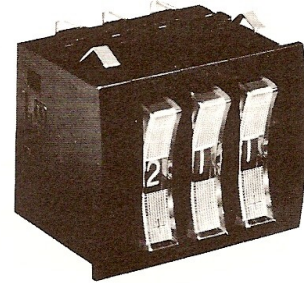
Email & Skype: info@chipsmall.com Web: www.chipsmall.com

Address: A1208, Overseas Decoration Building, #122 Zhenhua RD., Futian, Shenzhen, China





Digital Rocker Switches

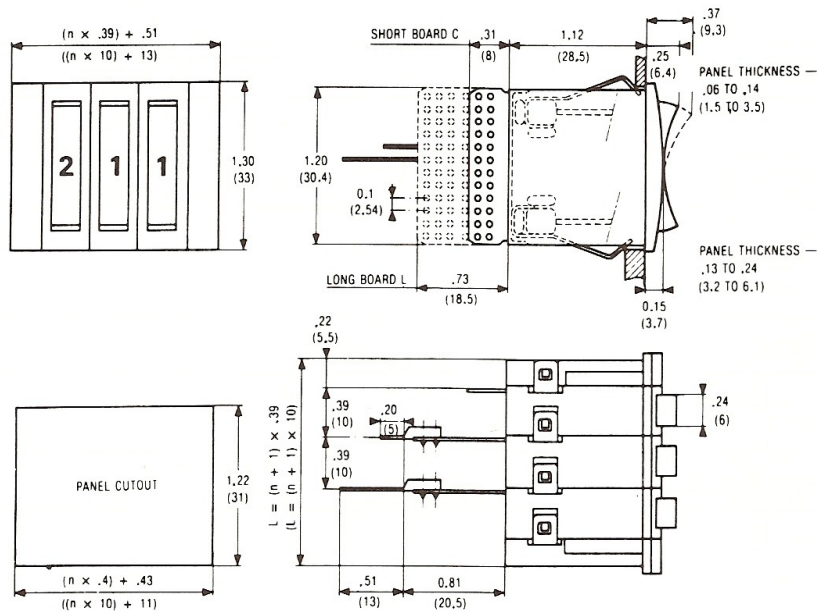


Series 84 211

- Fast switching in both directions
- Large numerals – .18 in. (4.5 mm) high
- All modules easily assembled without hardware
- Good looking – easy to read

Mechanical & Electrical Specifications		Materials
Operating Voltage: .1 to 250 V AC .1 to 50 V DC Nominal Electrical Load (Resistive Load): .1 mA to 100 mA Maximum Non-Switching Load: 1 A Contact Resistance: 70 mΩ max. Life at 50 V DC, .1 A, Resistive Load: 1 million operations Note: For voltages and currents less than the above values, please contact us.	Dielectric Strength: 600 V Operating Temperature: -13° F. to 158° F. (-25° C. to 70° C.) Storage Temperature: -40° F. to 185° F. (-40° C. to 85° C.) Dial Character Dimensions: .18 in. x .11 in. (4.5 mm x 2.8 mm) Operating Force at End of Rocker: 17 oz. (500 g)	Case: Noryl Wheel: Delrin Rocker Actuator: Makrolon® (Polycarbonate) Contacts and Tracks: Copper-Nickel-Gold Brush: Beryllium bronze Printed Circuit Board: Glass-filled epoxy (P.C. 75) *Special elements not used in other manufacturers products.

Dimensions in inches (mm)



n = Number of modules

3



Series 84 211
Rocker Switch - standard - panel mount

Reference	84 211 0	1
10 Digits Standard Module		
Standard Codes (See Truth Tables)		2
Decimal	01	/
BCD	02	
BCD & Complement	03	
2 Positions Repeating (+/-)	04	
2 Positions Repeating (5/0)	05	
BCD Complement	07	
BCD Excess 6 & Complement	08	
Circuits		3
Short	C	
Long	L	
Case		4
Black	N	
Wheels		5
Black	N	
Connections		6
Direct Soldering	1	:
Pins for Wire Wrapping	2	
Pins for PC Board Soldering	3	
Dial Stops		7
State the first and last digits. For Example 4/6 Digits locked out 0-1-2-3-7-8-9; usable 4-5-6		
Mounting Accessories		8
Pair of End Caps	79 211 847	
Spacer	79 211 836	
Separators (w/clips)	79 211 848	
Connectors:		
Wire Wrap Terminals without Lugs - X2	25 625 492	
Solder Terminals - W2	25 625 493	
Wire Wrap Terminals with Lugs - X2	25 625 494	
PC Board Solder Terminals - X3	25 625 495	
To Order Specify: 1-2/3-4-5-6:7-8		
For Example: 84 211 003/LNN1:4/6 with 79 211 847 84 211 0 switch with BCD & compliment code #3/long board with direct soldering #1 connections: Lock-out all numbers except 4, 5 & 6 and with a pair of end caps.		

3