



Chipsmall Limited consists of a professional team with an average of over 10 year of expertise in the distribution of electronic components. Based in Hongkong, we have already established firm and mutual-benefit business relationships with customers from,Europe,America and south Asia,supplying obsolete and hard-to-find components to meet their specific needs.

With the principle of “Quality Parts,Customers Priority,Honest Operation,and Considerate Service”,our business mainly focus on the distribution of electronic components. Line cards we deal with include Microchip,ALPS,ROHM,Xilinx,Pulse,ON,Everlight and Freescale. Main products comprise IC,Modules,Potentiometer,IC Socket,Relay,Connector.Our parts cover such applications as commercial,industrial, and automotives areas.

We are looking forward to setting up business relationship with you and hope to provide you with the best service and solution. Let us make a better world for our industry!



## Contact us

Tel: +86-755-8981 8866 Fax: +86-755-8427 6832

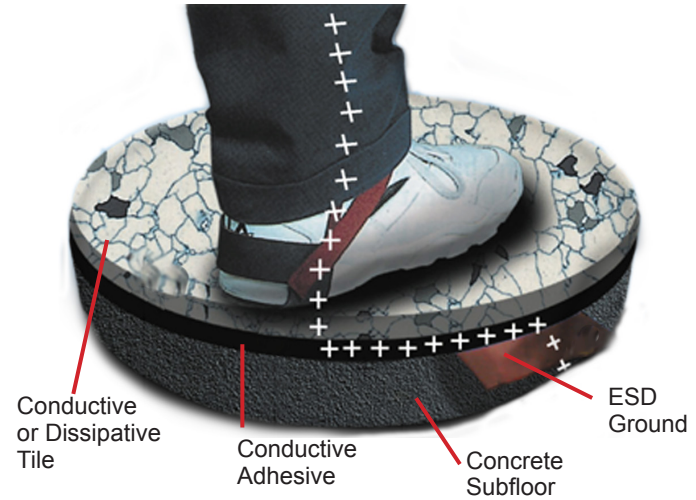
Email & Skype: info@chipsmall.com Web: www.chipsmall.com

Address: A1208, Overseas Decoration Building, #122 Zhenhua RD., Futian, Shenzhen, China

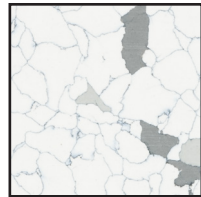
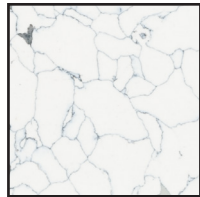
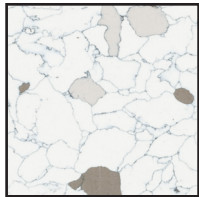


# 8400 Series Static Control Vinyl Floor Tile

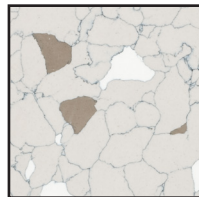
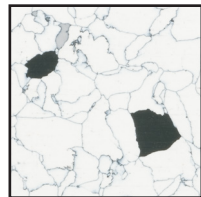
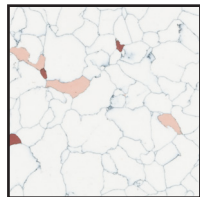
8400 Series Static Control Vinyl Floor Tile is a long-term solution for helping control ESD. This durable and attractive vinyl tile can easily be installed by competent flooring contractors (using conductive adhesive and grounding strips). The flexible, resilient tiles are made with only 100% pure vinyl and contain a minimum amount of filler and none of the regrind that can make tile brittle. Both the “conductive” and “static-dissipative” versions are available in a selection of bright, vivid colors. A proprietary manufacturing process completely seals in the conductive carbon medium, resulting in a unique tile that can be easily cleaned and shined to a gloss while maintaining its electrical properties – without the use of an ESD wax or polish.



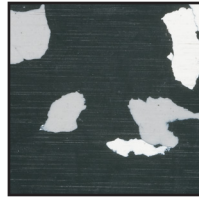
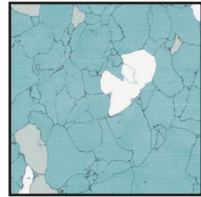
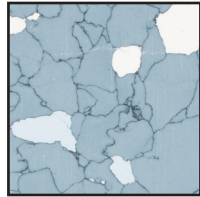
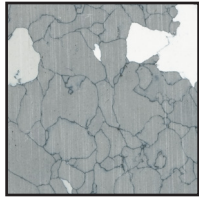
- |   |   |  |  |
|---|---|--|--|
| <b>Brown</b><br><a href="#">8411</a> (Dissipative)<br><a href="#">8431</a> (Conductive) | <b>White</b><br><a href="#">8412</a> (Dissipative)<br><a href="#">8432</a> (Conductive) | <b>Gray</b><br><a href="#">8413</a> (Dissipative)<br><a href="#">8433</a> (Conductive) | <b>Blue</b><br><a href="#">8414</a> (Dissipative)<br><a href="#">8434</a> (Conductive) |
|---|---|--|--|



- |   |  |   |   |
|---|--|---|---|
| <b>Green</b><br><a href="#">8415</a> (Dissipative)<br><a href="#">8435</a> (Conductive) | <b>Maroon</b><br><a href="#">8416</a> (Dissipative)<br><a href="#">8436</a> (Conductive) | <b>Black</b><br><a href="#">8417</a> (Dissipative)<br><a href="#">8437</a> (Conductive) | <b>Reverse Brown</b><br><a href="#">8421</a> (Dissipative)<br><a href="#">8441</a> (Conductive) |
|---|--|---|---|



- |  |  |   |  |
|--|--|---|--|
| <b>Reverse Gray</b><br><a href="#">8423</a> (Dissipative)<br><a href="#">8443</a> (Conductive) | <b>Reverse Blue</b><br><a href="#">8424</a> (Dissipative)<br><a href="#">8444</a> (Conductive) | <b>Reverse Green</b><br><a href="#">8425</a> (Dissipative)<br><a href="#">8445</a> (Conductive) | <b>Reverse Black</b><br><a href="#">8427</a> (Dissipative) |
|--|--|---|--|



Meets ANSI/ESD S20.20 flooring required limit tested per ANSI/ESD STM7.1 and ESD TR53, and is suitable flooring component for personnel grounding Footwear / Flooring System.

**Limited Warranty, Warranty Exclusions, Limit of Liability and RMA Request Instructions**  
<http://staticcontrol.descoindustries.com/warranty.aspx>

Mechanical Properties	Typical Value	Test Method
Flammability: Flame Spread Index		ASTM E84 Meets Class 1 requirements
Critical Radiant Flux	> 1.1 w/cm. sq.	ASTM E648
Physical Specifications		Meets ASTM F1700-13A
Abrasion Resistance Taber H22 wheel	Pass	ASTM D 3389
Electrical Properties		
Electrical Resistance Dissipative Tile	$1 \times 10^6$ to $< 1 \times 10^9$ ohms	ANSI/ESD STM7.1 ANSI/ESD STM97.1
Conductive Tile	$2.5 \times 10^4$ to $< 1 \times 10^6$ ohms	ANSI/ESD STM7.1 ANSI/ESD STM97.1
Static Generation (Walking Voltage) Dissipative Tile Conductive Tile	<50 Volts <25 Volts	ANSI/ESD STM97.2 ANSI/ESD STM97.2
With <a href="#">2051</a> Shoe Grounder Assembly at 12% RH (+/-3% RH at 73°F +/- 2°)		
General		
Size	0.125" x 12" (3.2mm x 305mm x 305mm)	

Made in Canada.

Specifications and procedures subject to change without notice.

## 8400 SERIES STATIC CONTROL VINYL FLOOR TILE

926 JR Industrial Drive, Sanford, NC 27332  
WEB SITE: [StaticControl.com](http://StaticControl.com)  
PHONE (919) 718-0000

**DRAWING  
NUMBER**  
8400

**DATE**  
February  
2016

