



Chipsmall Limited consists of a professional team with an average of over 10 year of expertise in the distribution of electronic components. Based in Hongkong, we have already established firm and mutual-benefit business relationships with customers from,Europe,America and south Asia,supplying obsolete and hard-to-find components to meet their specific needs.

With the principle of “Quality Parts,Customers Priority,Honest Operation,and Considerate Service”,our business mainly focus on the distribution of electronic components. Line cards we deal with include Microchip,ALPS,ROHM,Xilinx,Pulse,ON,Everlight and Freescale. Main products comprise IC,Modules,Potentiometer,IC Socket,Relay,Connector.Our parts cover such applications as commercial,industrial, and automotives areas.

We are looking forward to setting up business relationship with you and hope to provide you with the best service and solution. Let us make a better world for our industry!



Contact us

Tel: +86-755-8981 8866 Fax: +86-755-8427 6832

Email & Skype: info@chipsmall.com Web: www.chipsmall.com

Address: A1208, Overseas Decoration Building, #122 Zhenhua RD., Futian, Shenzhen, China

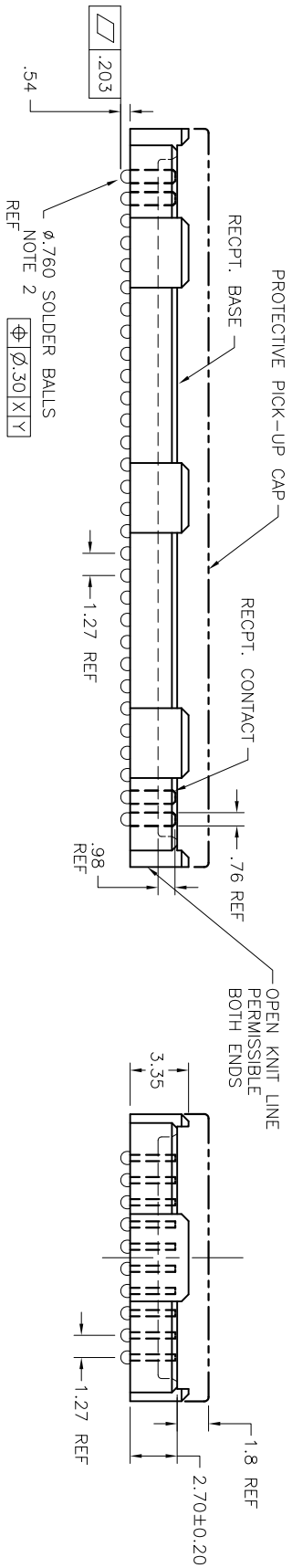
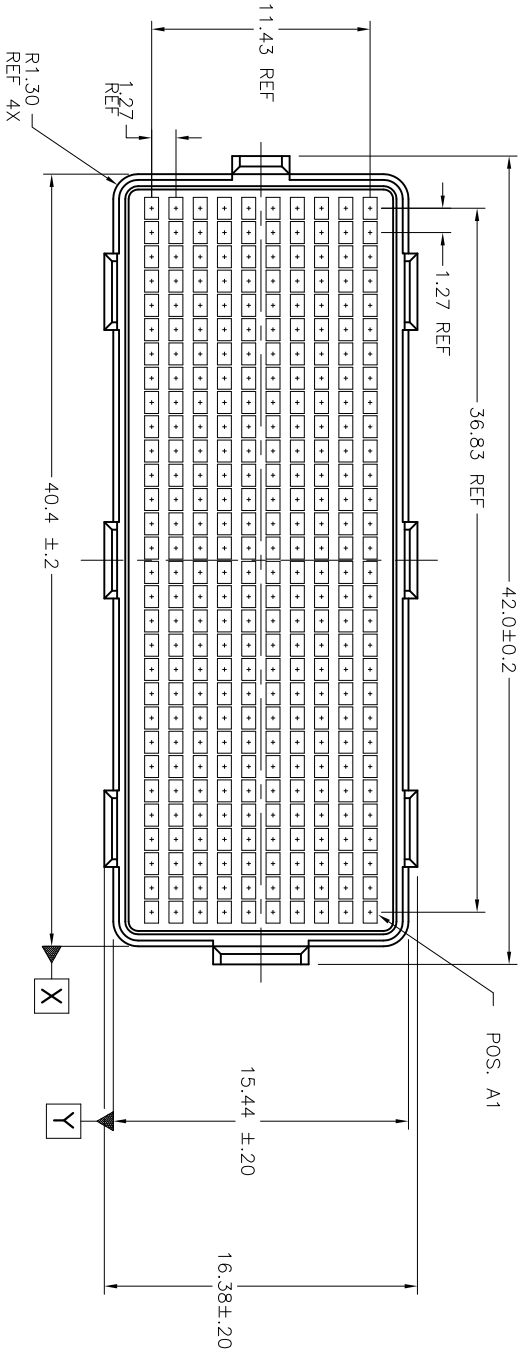


PRODUCT NUMBER
SEE TABLE

1 | 2

3 |

4



mat'l code	SEE NOTE 1	surface	tolerance	projection	product family
lfr	ecm no.	dr	date	ASME Y14.5 ✓ intolerances unless otherwise specified	ASME Y14.5 X&F
-	-	-	-	angles D	M
L	V11-0028	HTB	2011-06-02	XXX.13	M
M	V-012333	RE	2012-07-30	XXX.051	M
N	V-13453	DCH	2012-11-14	D. WUJCHEN	999-12-8
P	V-13453	DCH	2012-02-06	D. HARPER	999-12-8
R	V-18087	DCH	2014-02-25	D. HARPER	999-12-8
S	V-26025	RMW	2017-02-06	D. HARPER	999-12-8
Sheet	revision	S	S	S	S
index	Sheet	1	2	3	4

product family: MEG-ARRAY

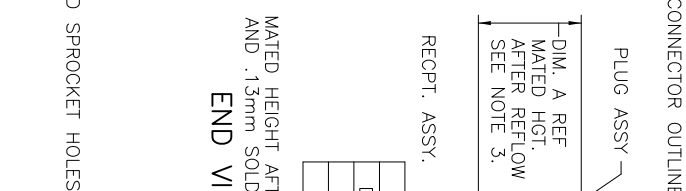
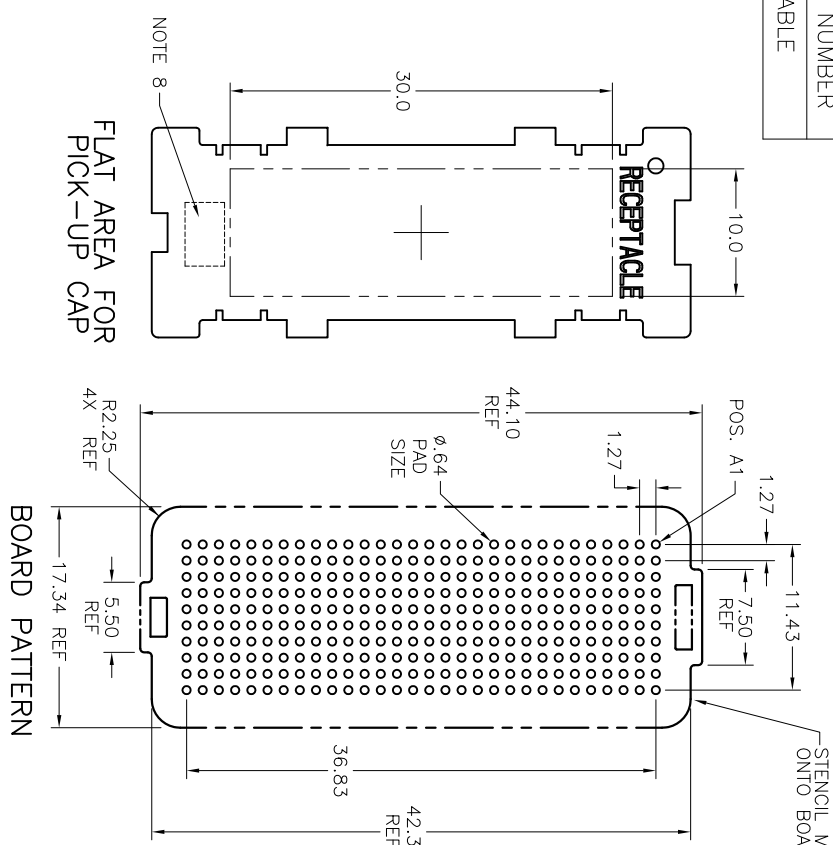
title: 4mm RECEPTACLE ASSEMBLY
10 X 30 = 300 POS.

Scale: 3:1

dwg no: 84501
sheet 1 of 4
size A4

type: CUSTOMER Drawing

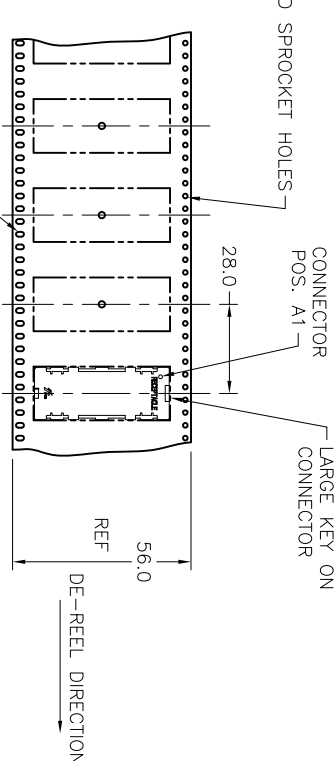
PRODUCT NUMBER
SEE TABLE



MATED HEIGHT TABLE

DIM. A	PLUG ASSY. P/N	RECEPT. ASSY. P/N
4.0	84500	84501
10.0	84578	84501

MATED HEIGHT AFTER REFLOW IS BASED ON ϕ .64mm PAD (METAL-DEFINED) AND .13mm SOLDER PASTE STENCIL THICKNESS. SEE NOTE 3.
END VIEW - MATED CONNECTORS SCALE NONE



TAPE & REEL PACKAGING

mat'l. code	surface	tolerance	projection	product family
SEE NOTE 1	ASME Y14.5	ASME Y14.5	MM	MEG-ARRAY
litr	angles unless otherwise specified	3x3		title
S	0° ±2°	XXX.13	Scale: 2:1	4mm RECEPTACLE ASSEMBLY
	XXX.051			10 X 30 = 300 POS.
	DR D. WAUGHEN 999-12-6			Sheet 2 of 4
	DR D. HARPER 999-12-6			size A4
	DR D. HARPER 999-12-6			CUSTOMER Drawing
Sheet Index	revision			



Copyright ©



FCIconnect.com

1

2

PRODUCT NUMBER	PICK-UP CAP (NATURAL OR BLACK IN COLOR)	CONTACT PLATING AND THICKNESS	SOLDER BALL	NOTES
84501-001	YES	15μ" (.38μm) Au	SnPb	
84501-001LF	YES	15μ" (.38μm) Au	LEAD FREE	6
84501-091	YES	15μ" (.38μm) GXT	SnPb	
84501-091LF	YES	15μ" (.38μm) GXT	LEAD FREE	6
84501-093LF	YES	15μ" (.38μm) GXT	LEAD FREE	6, 11
84501-101	YES	30μ" (.76μm) Au	SnPb	
84501-101LF	YES	30μ" (.76μm) Au	LEAD FREE	6
84501-191	YES	30μ" (.76μm) GXT	SnPb	
84501-191LF	YES	30μ" (.76μm) GXT	LEAD FREE	6
84501-201	YES	50μ" (1.27μm) Au SPECIAL	SnPb	4
84501-201LF	YES	50μ" (1.27μm) Au SPECIAL	LEAD FREE	4 AND 6
84501-291	YES	50μ" (1.27μm) GXT SPECIAL	SnPb	4
84501-291LF	YES	50μ" (1.27μm) GXT SPECIAL	LEAD FREE	4 AND 6
84501-A01	YES	30μ" (.76μm) Au SPECIAL	SnPb	7
84501-A01LF	YES	30μ" (.76μm) Au SPECIAL	LEAD FREE	6 & 7
84501-301	YES	15μ" (.38μm) Au SPECIAL	SnPb	7
84501-301LF	YES	15μ" (.38μm) Au SPECIAL	LEAD FREE	6 & 7
84501-401	YES	30μ" (.76μm) Au SPECIAL	SnPb	7
84501-401LF	YES	30μ" (.76μm) Au SPECIAL	LEAD FREE	6 & 7
84501-501	YES	Au SPECIAL	SnPb	4 & 7
84501-501LF	YES	Au SPECIAL	LEAD FREE	4, 6 & 7

1 | 2

2

3

4

mat'l. code	SEE NOTE 1	date	surface ASME Y14.5 V	tolerance ASME Y14.5	projection	product family
lbr	lbr	lbr	lbr	lbr	lbr	lbr
S			angles	XXXX.051	MM	MEG-ARRAY
				XXXX.051	Scale: 2:1	4mm RECEPTACLE ASSEMBLY
				XXXX.051		10 X 30 = 300 POS.
						Sheet 3 of 4
						Size A4
						CUSTOMER Drawing
Sheet Index	revision					
	Sheet					

1

2



3



4

B

form: ArrayMxc

NOTES:

- ① MATERIAL
HOUSING: LCP
CONTACT: COPPER ALLOY
PLATING
CONTACT: (SEE TABLE ON SHEET3)
SOLDER BALL: (SEE TABLE ON SHEET3)
EUTECTIC SnPb OR LEAD FREE
95.5Sn/44Ag/0.5Cu
- ② SOLDER BALLS WILL NOT BE PERFECT SPHERICAL SHAPE DUE TO REFLOW ATTACHMENT.
- ③ MATED HEIGHT EFFECTED BY CUSTOMER'S PCB PAD SIZE, PLATING, SOLDER REFLOW PROFILE, & SOLDER PASTE.
- ④ PLATING FOR -2XX SERIES PRODUCT NUMBERS MEET THE REQUIREMENTS OF GR-1217-CORE, CENTRAL OFFICE ENVIRONMENT, (25 YEAR LIFE EXPECTANCY). THE CONTACTS IN THESE PRODUCT NUMBERS ALSO HAVE SPECIAL CONTACT GEOMETRY.
- ⑤ FOR PROPER APPLICATION FOLLOW FCI APPLICATION SPECIFICATION GS-20-033 LEAD FREE SOLDER BALLS WILL NOT SOLDER PROPERLY IN A LEADED SOLDER PROCESS DUE TO A HIGHER REFLOW TEMPERATURE. LEAD FREE PRODUCT IS THEREFORE NOT BACKWARDS COMPATIBLE WITH LEADED OR SOME SOLDERING APPLICATIONS. REFERENCE FCI APPLICATION SPECIFICATION.
- ⑥ THIS PRODUCT MEETS EUROPEAN UNION DIRECTIVES AND OTHER COUNTRY REGULATIONS AS DESCRIBED IN GS-47-0004 PRODUCT MEETING THIS DIRECTIVE IS IDENTIFIED IN THE LOT CODE NUMBER MARKED ON EACH PART BY HAVING AN "X" IN THE SEVENTH CHARACTER POSITION.
- ⑦ 84501-A01 AND -A01LF ARE CUSTOMER SPECIALS.
- ⑧ CURRENT COMPANY LOGO TO BE VISIBLE IN APPROXIMATE AREA SHOWN.
- 9. 84501-301, -301LF, -401, -401LF, -501 and -501LF ARE OBSOLETE.
- 10. A  SYMBOL WILL BE NEXT TO ANY DIMENSION, NEW VIEW OR NOTE WHICH HAS BEEN MODIFIED WITH THE CURRENT DRAWING REVISION
- ⑪ 84501-093LF HAS A SPECIAL CAP 

mat'l code	SEE NOTE 1	surface	tolerance	projection	product family
lfr	eqn no	dr	date	ASME Y14.5	MEG-ARRAY
S		angles	ASME Y14.5		title
		0° ±2'	XXX.X	MM	4mm RECEPTACLE ASSEMBLY
		dr	XXXX.051	Scale: 2:1	10 X 30 = 300 POS.
		dr	D. WAUGHEN		dwg no
		plqj	D. HARPER		84501
		dlr	D. HARPER		sheet 4 of 4
		qdd	D. HARPER		size
sheet	revision				A4
index	sheet				CUSTOMER Drawing

B

A

B

A