



Chipsmall Limited consists of a professional team with an average of over 10 year of expertise in the distribution of electronic components. Based in Hongkong, we have already established firm and mutual-benefit business relationships with customers from,Europe,America and south Asia,supplying obsolete and hard-to-find components to meet their specific needs.

With the principle of "Quality Parts,Customers Priority,Honest Operation,and Considerate Service",our business mainly focus on the distribution of electronic components. Line cards we deal with include Microchip,ALPS,ROHM,Xilinx,Pulse,ON,Everlight and Freescale. Main products comprise IC,Modules,Potentiometer,IC Socket,Relay,Connector.Our parts cover such applications as commercial,industrial, and automotives areas.

We are looking forward to setting up business relationship with you and hope to provide you with the best service and solution. Let us make a better world for our industry!



## Contact us

Tel: +86-755-8981 8866 Fax: +86-755-8427 6832

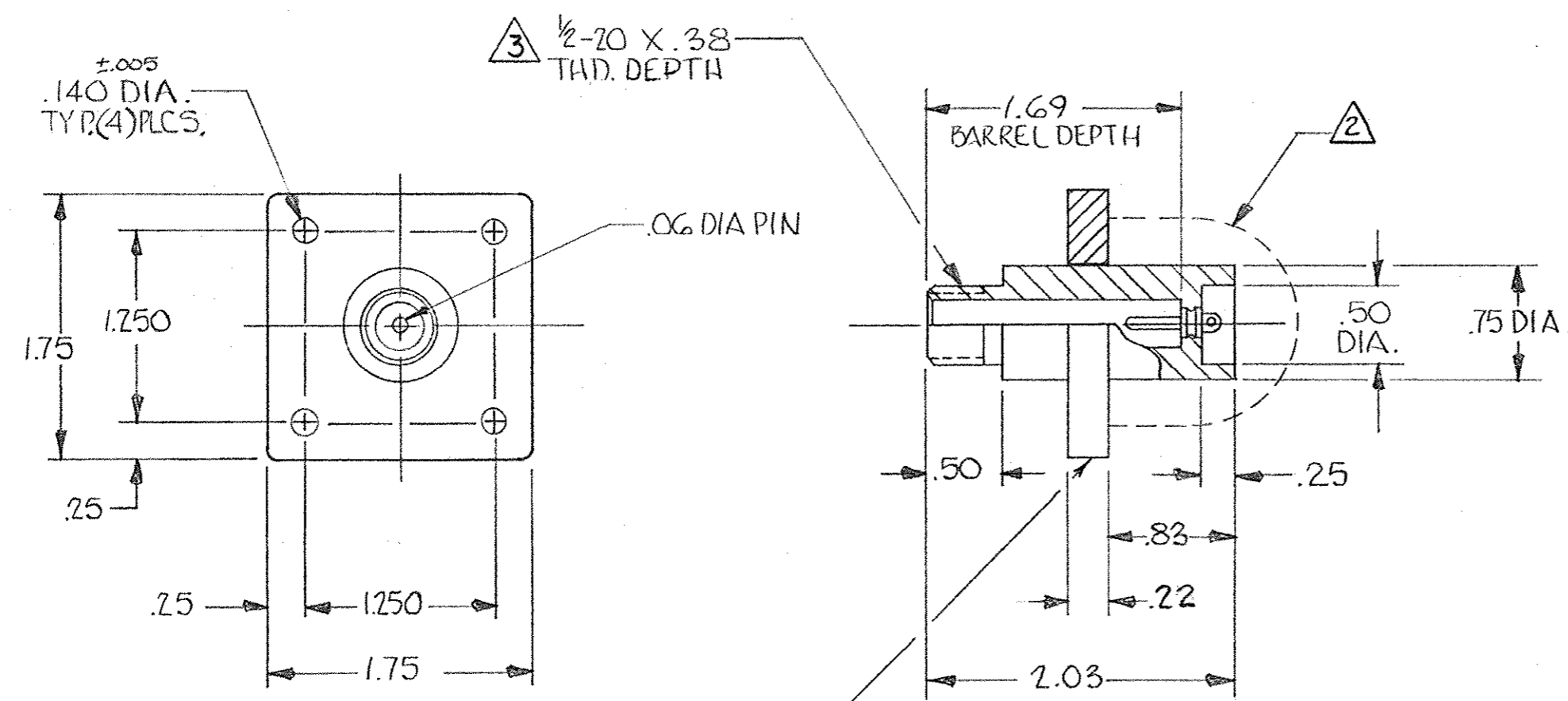
Email & Skype: info@chipsmall.com Web: www.chipsmall.com

Address: A1208, Overseas Decoration Building, #122 Zhenhua RD., Futian, Shenzhen, China



THIS PRODUCT DESIGNED AND BUILT BY AMP INCORPORATED. NO LICENSE TO USE THAT DESIGN IN MANUFACTURE, OR TO USE ANY ISSUED OR PENDING PATENTS WHICH ARE INVOLVED, IS IMPLIED.

ZONE	LTR	DESCRIPTION	DATE	APPROVED
C		REVISED & REDRAWN	BW 12-21-71	MJD
D		REV. NOTE 1	LWS 10-17-73	JPA
E		.22 WAS .25	11-27-74	JPA
F		ADDED MARKING NOTE	KH 8-23-76	MJD
G		ADD -3, -4 NPR 1693	C.D. 3-25-86	MJD
H		REV PER ECN S-3960	4/15/87	KB
J		REV PER OH14-0192-05	1-06	PY



1. RECEPTACLE TO MATE WITH AMP LGH-1L LEAD ASSEMBLY. AVAILABLE SEPARATELY.

2. CUSTOMER MUST PROTECT THE RECEPTACLE'S BACK END AGAINST ARC-OVER & BREAK-DOWN.

3. PER FEDERAL STANDARD H-28 3 WIRE METHOD. DIMENSION OVER WIRES TO BE: .497-.510.

TERMINAL PLATING

PART NO	TIN-LEAD	GOLD	TIN	MARKING
846814-1	X	—	—	YES
846814-2	—	X	—	YES
846814-3	X	—	—	NO
846814-4	—	X	—	NO
5-846814-1	—	—	X	YES

QTY REQD	QTY REQD	ITEM NO.	DWG SIZE	PART OR IDENTIFYING NO.	NOMENCLATURE OR DESCRIPTION	SYMBOL
PARTS LIST						
UNLESS OTHERWISE SPECIFIED: DIMENSIONS ARE IN INCHES TOLERANCES .00 ± .02 ANGLES = .000 ± .005					CONTRACT NO. DR R.H. STANBAUGH 2-22-67 CHK APPD J.W.G. 2-22-67	
MATERIAL: GLASS EPOXY (MOLDED)					AMP INCORPORATED CAPITRON DIVISION ELIZABETHTOWN, PENNSYLVANIA	
FINISH: BLACK					NAME LGH-1L FLANGED RECEP. (FOR BULK HEAD APPLICATION) 1.69 BARREL DEPTH	
NEXT ASSY					SIZE CODE IDENT NO. NUMBER C 00779 846814	
QTY REQD APPLICATION					SCALE WT SHEET 10F1	