



Chipsmall Limited consists of a professional team with an average of over 10 year of expertise in the distribution of electronic components. Based in Hongkong, we have already established firm and mutual-benefit business relationships with customers from,Europe,America and south Asia,supplying obsolete and hard-to-find components to meet their specific needs.

With the principle of “Quality Parts,Customers Priority,Honest Operation,and Considerate Service”,our business mainly focus on the distribution of electronic components. Line cards we deal with include Microchip,ALPS,ROHM,Xilinx,Pulse,ON,Everlight and Freescale. Main products comprise IC,Modules,Potentiometer,IC Socket,Relay,Connector.Our parts cover such applications as commercial,industrial, and automotives areas.

We are looking forward to setting up business relationship with you and hope to provide you with the best service and solution. Let us make a better world for our industry!



Contact us

Tel: +86-755-8981 8866 Fax: +86-755-8427 6832

Email & Skype: info@chipsmall.com Web: www.chipsmall.com

Address: A1208, Overseas Decoration Building, #122 Zhenhua RD., Futian, Shenzhen, China



,19

BY AMP INCORPORATED. ALL RIGHTS RESERVED.

REVISIONS

APVD

RELEASED FB00-00291-04

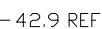
13DEC04

C.W

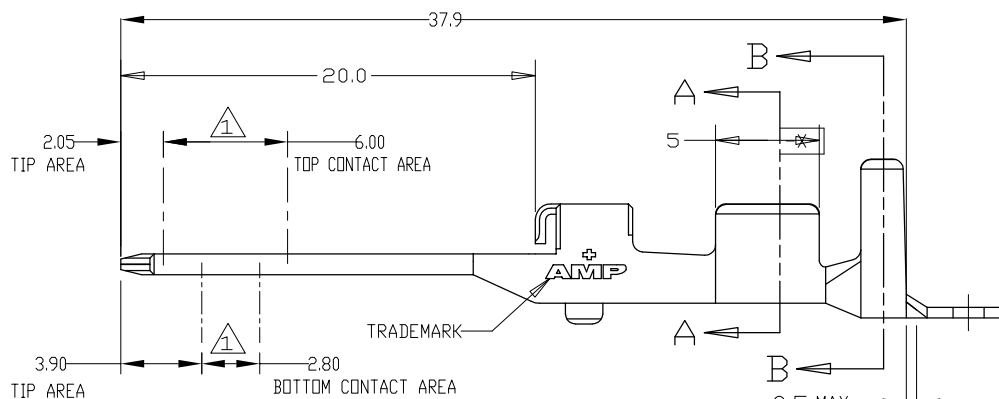
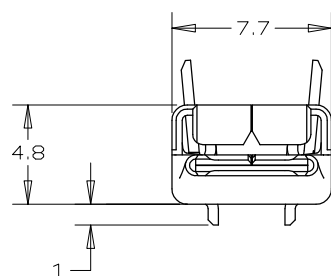
I.E




SECTION A-A



SECTION B-B



0.5 MAX
(L/P CUT)


	84695-1
FINISH	PART NO.

WIRE RANGE	INSULATION DIA
3.08/5.5mm ² AWG #12/#10	4/5.2mmØ

1 FINISH : 0.2um MIN GOLD (CONTACT AREA) PLATING OVER Ni UNDER PLATING ALL OVER
EXCEPT INSIDE OF CONTACT BOX
GOLD PLATING THK DID NOT CONTROLL AT CONTACT TIP AREA

TOLERANCES UNLESS
* ≤ 10 : ± 0.3
10 < * ≤ 30 : ± 0.35
30 < * ≤ 100 : ± 0.4
ANGLE: $\pm 3^\circ$

THIS DRAWING IS A CONTROLLED DOCUMENT FOR AMP INCORPORATED.
IT IS SUBJECT TO CHANGE AND THE CONTROLLING ENGINEERING
ORGANIZATION SHOULD BE CONTACTED FOR THE LATEST REVISION.

THIS DRAWING IS A CONTROLLED DOCUMENT FOR AMP INCORPORATED. IT IS SUBJECT TO CHANGE AND THE CONTROLLING ENGINEERING ORGANIZATION SHOULD BE CONTACTED FOR THE LATEST REVISION.		DWN WY LFE CHK LP TAN APVD WL CHOO 3JAN'00 3JAN'00 31MAY'01		AMP AMP MANUFACTURING (SINGAPORE) PTE. LTD.	
DIMENSIONS: mm		TOLERANCES UNLESS OTHERWISE SPECIFIED:		NAME TAB CONTACT "M" SIZE <DYNAMIC D-5000 SERIES>	
		0 PLC ± 0.30 1 PLC ± 0.35 2 PLC ± 0.40 3 PLC ± 0.40 4 PLC ± 0.40 ANGLES $\pm 3^\circ$		PRODUCT SPEC 108-51030 APPLICATION SPEC 114-51009	
MATERIAL COPPER ALLOY		FINISH SEE TABLE		SIZE A3 CAGE CODE 00779 DRAWING NO C=84695	
		WEIGHT 2.08g		SCALE 4:1 SHEET 1 OF 1 REV D	
		CUSTOMER DRAWING			

AMP 1470-19 REV 09MAY94