



Chipsmall Limited consists of a professional team with an average of over 10 year of expertise in the distribution of electronic components. Based in Hongkong, we have already established firm and mutual-benefit business relationships with customers from,Europe,America and south Asia,supplying obsolete and hard-to-find components to meet their specific needs.

With the principle of “Quality Parts,Customers Priority,Honest Operation,and Considerate Service”,our business mainly focus on the distribution of electronic components. Line cards we deal with include Microchip,ALPS,ROHM,Xilinx,Pulse,ON,Everlight and Freescale. Main products comprise IC,Modules,Potentiometer,IC Socket,Relay,Connector.Our parts cover such applications as commercial,industrial, and automotives areas.

We are looking forward to setting up business relationship with you and hope to provide you with the best service and solution. Let us make a better world for our industry!



Contact us

Tel: +86-755-8981 8866 Fax: +86-755-8427 6832

Email & Skype: info@chipsmall.com Web: www.chipsmall.com

Address: A1208, Overseas Decoration Building, #122 Zhenhua RD., Futian, Shenzhen, China



4

3

2

1

THIS DRAWING IS UNPUBLISHED.

RELEASED FOR PUBLICATION

,19

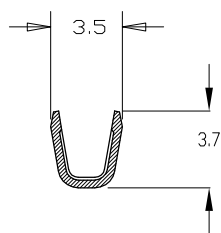
© COPYRIGHT 19

BY AMP INCORPORATED. ALL RIGHTS RESERVED.

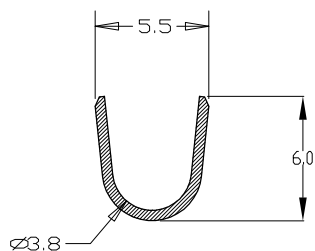
LDC
ESDIST
00

REVISIONS

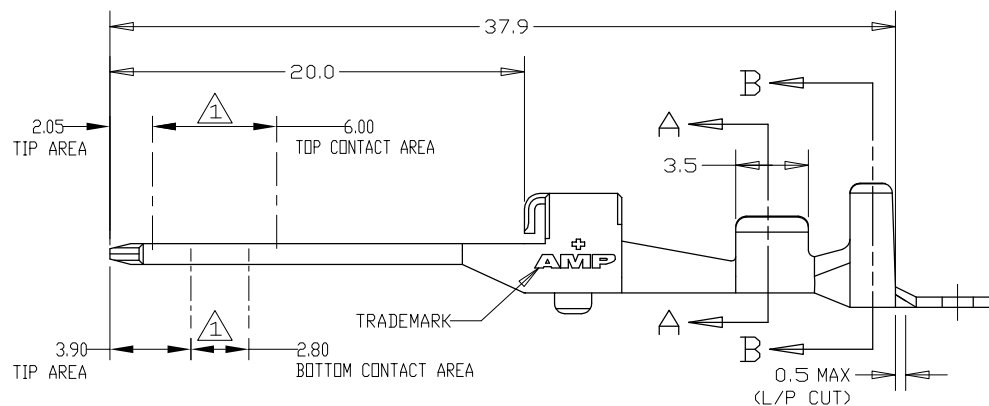
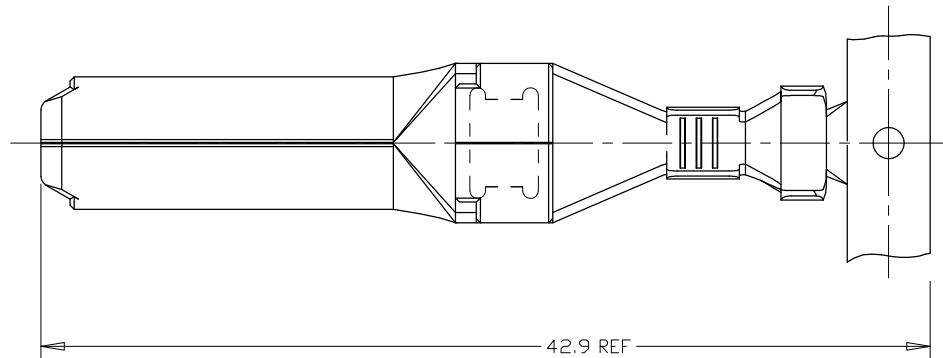
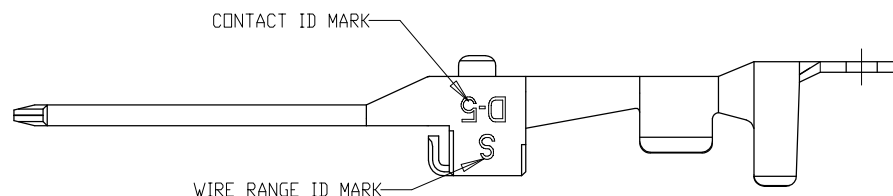
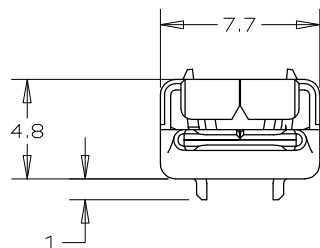
P	LTR	DESCRIPTION	DATE	DWN	APVD
	B	REVISED FP00-0291-04	13DEC04	C.W	I.E



SECTION A-A



SECTION B-B



1	84696-1
FINISH	PART NO.

WIRE RANGE	INSULATION DIA
1.23/2.27mm ² AWG #16/#14	3/3.8mm ϕ

NOTES:

- 1 FINISH : 0.2 μ m MIN GOLD PLATING (CONTACT AREA) OVER Ni UNDER PLATING ALL OVER EXCEPT INSIDE OF CONTACT BOX
GOLD PLATING THK DID NOT CONTROL AT CONTACT TIP AREA

2. TOLERANCE UNLESS OTHERWISE SPECIFIED

- * ≤ 10 : ± 0.3
10 < * ≤ 30 : ± 0.35
30 < * ≤ 100 : ± 0.4
ANGLE: $\pm 3^\circ$

THIS DRAWING IS A CONTROLLED DOCUMENT FOR AMP INCORPORATED.
IT IS SUBJECT TO CHANGE AND THE CONTROLLING ENGINEERING
ORGANIZATION SHOULD BE CONTACTED FOR THE LATEST REVISION.

DIMENSIONS:	TOLERANCES UNLESS OTHERWISE SPECIFIED
mm	
	0 PLC ± 0.30 1 PLC ± 0.35 2 PLC ± 0.40 3 PLC ± 0.40 4 PLC ± 0.40 ANGLES $\pm 3^\circ$
MATERIAL	FINISH
(COPPER ALLOY)	SEE TABLE

DWN	3JAN'00
CHK	WY LEE
LTR	3JAN'00
APVD	LP TAN
PRODUCT SPEC	WL CHOO
APPLICATION SPEC	108-51030
VEIGHT	114-51009
CUSTOMER DRAWING	1.93g

AMPAMP MANUFACTURING
(SINGAPORE) PTE. LTD.NAME
TAB CONTACT "S" SIZE
(DYNAMIC D-5000 SERIES)SIZE
A3CAGE CODE
00779DRAWING NO
C=84696

SCALE 4:1 SHEET 1 OF 1 REV B