



Chipsmall Limited consists of a professional team with an average of over 10 year of expertise in the distribution of electronic components. Based in Hongkong, we have already established firm and mutual-benefit business relationships with customers from,Europe,America and south Asia,supplying obsolete and hard-to-find components to meet their specific needs.

With the principle of “Quality Parts,Customers Priority,Honest Operation,and Considerate Service”,our business mainly focus on the distribution of electronic components. Line cards we deal with include Microchip,ALPS,ROHM,Xilinx,Pulse,ON,Everlight and Freescale. Main products comprise IC,Modules,Potentiometer,IC Socket,Relay,Connector.Our parts cover such applications as commercial,industrial, and automotives areas.

We are looking forward to setting up business relationship with you and hope to provide you with the best service and solution. Let us make a better world for our industry!



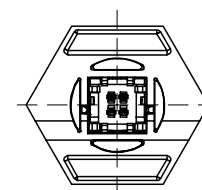
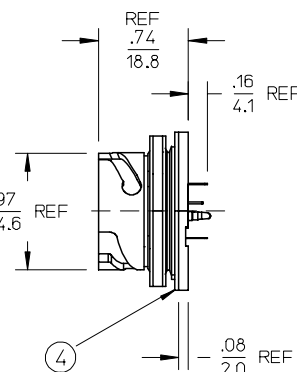
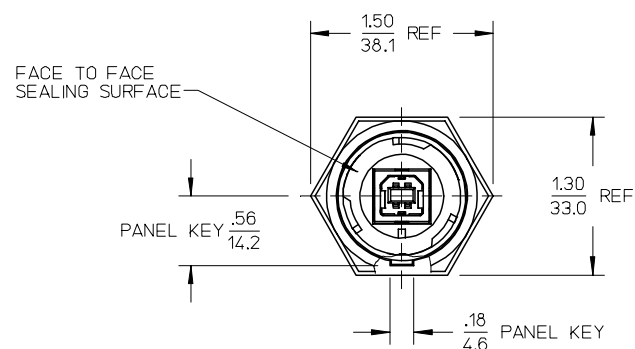
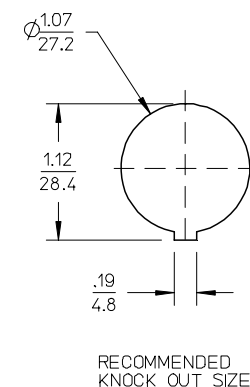
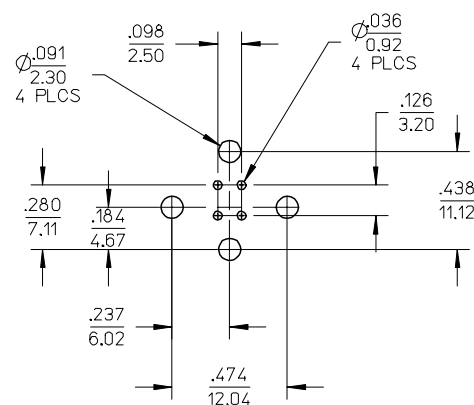
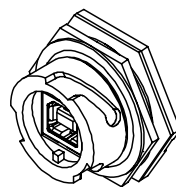
## Contact us

Tel: +86-755-8981 8866 Fax: +86-755-8427 6832

Email & Skype: [info@chipsmall.com](mailto:info@chipsmall.com) Web: [www.chipsmall.com](http://www.chipsmall.com)

Address: A1208, Overseas Decoration Building, #122 Zhenhua RD., Futian, Shenzhen, China





1. MATERIAL: SEE TABLE
2. FINISHES: SEE TABLE
3. MATES WITH I.E. INDUSTRY STANDARD.
4. RECOMMENDED PCB THICKNESS TO .063 / 1.60.
5. DRAWING FORMERLY SK0895.
6. ASSEMBLY IS RoHS COMPLIANT.

4	1	PANEL GASKET	NEOPRENE	BLACK
3	1	USB TYPE-B SHIELDED I/O RECEPTACLE	POLYESTER	BLACK
2	1	LOCK NUT	POLYESTER	BLACK
1	1	RECEPTACLE HOUSING	POLYESTER	BLACK
ITEM	QTY.	DESCRIPTION	MATERIAL NO.	FINISH

CADKEY TO ME10 EC NO: ET2007-0426 DRAWN: BONANNO 2007/05/29 CHK'D: J. MACNEIL 2007/05/29 APPR: J. MACNEIL 2007/05/30	QUALITY SYMBOLS  ▼=0 ▽=0	GENERAL TOLERANCES (UNLESS SPECIFIED)		DIMENSION STYLE IN/MM		SCALE ---	DESIGN UNITS INCH	THIRD ANGLE PROJECTION			
			mm	INCH	DRAWN BY S. GILBERT	DATE 06-25-04	TITLE RECEPTACLE, PANEL / PCB MTG, USB TYPE-B SHIELDED, CIC				
		4 PLACES	± ---	± ---	CHECKED BY	DATE					
		3 PLACES	± ---	± .005							
		2 PLACES	± 0.13	± .01	APPROVED BY		DATE	MOLEX MOLEX INCORPORATED			
		1 PLACE	± 0.3	± ---	MATERIAL NO.		DOCUMENT NO.				
		ANGULAR ± 2 °			847300001		SD-84730-001		1 OF 1		
		DRAFT WHERE APPLICABLE MUST REMAIN WITHIN DIMENSIONS			SIZE B	THIS DRAWING CONTAINS INFORMATION THAT IS PROPRIETARY TO MOLEX INCORPORATED AND SHOULD NOT BE USED WITHOUT WRITTEN PERMISSION					

ib\_frame\_B\_P\_ME\_T  
Rev. F 2006/04/15

---

9

8

---

7

6

□

4

1

1

---

## SALES DRAWING