



Chipsmall Limited consists of a professional team with an average of over 10 year of expertise in the distribution of electronic components. Based in Hongkong, we have already established firm and mutual-benefit business relationships with customers from,Europe,America and south Asia,supplying obsolete and hard-to-find components to meet their specific needs.

With the principle of “Quality Parts,Customers Priority,Honest Operation,and Considerate Service”,our business mainly focus on the distribution of electronic components. Line cards we deal with include Microchip,ALPS,ROHM,Xilinx,Pulse,ON,Everlight and Freescale. Main products comprise IC,Modules,Potentiometer,IC Socket,Relay,Connector.Our parts cover such applications as commercial,industrial, and automotives areas.

We are looking forward to setting up business relationship with you and hope to provide you with the best service and solution. Let us make a better world for our industry!



Contact us

Tel: +86-755-8981 8866 Fax: +86-755-8427 6832

Email & Skype: info@chipsmall.com Web: www.chipsmall.com

Address: A1208, Overseas Decoration Building, #122 Zhenhua RD., Futian, Shenzhen, China



EN SERIES

LIQUID LEVEL CONTROL

UL listed CSA recognized



- **Pump Up or Down Control**
- **DIN-Rail Enclosure**
- **5 kΩ to 100 kΩ**
- **SPDT 8 Amp Relay Output**

GENERAL FEATURES:

The EN series is designed to monitor conductive liquids such as tap water, waste water, sea water, coffee, etc. The principle is based on the measurement of the resistance of the liquid between two submerged probes. When this value is lower than the preset threshold selected on the dial of the unit, the output relay changes state. Applications are found in the environmental and chemical industries, food equipment machinery and food processing technology.

SPECIFICATIONS:

Input Power	24, 110, 230 VAC ±15%
	50/60 Hz
Max. Power Consumption	3 VA
Probe Sensitivity	5 kΩ to 100 kΩ
Probe Voltage	24 VAC Max.
Probe Current	5 mA
Max. Probe Cable Capacitance ..	10 nf
Probe/Output Relay Insulation ...	2,500 k VAC
Output Relay	SPDT Relay
Max. Output Rating	8 Amp
Relay Electrical Life	2 x
Operating Temperature	+14°F to 140°F (-20°C to 60°C)
Weight	5 oz. (140g)

CONFORMITY:

Immunity to interference and noise (EMC)

- IEC 1000.4.5 Surge immunity: Level 3
- IEC 1000.4.2 Electrostatic discharges: Level 3
- IEC 255.5 Damped oscillated waves: Level 3
- IEC 1000.4.3 Radiated disturbance Level 3
- IEC 1000.4.4 Fast transient Level 3
- IEC 1000.4.6 Conducted RF: Level 3 (ENV 50141)

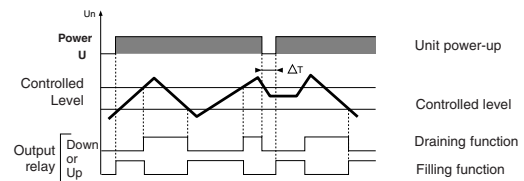
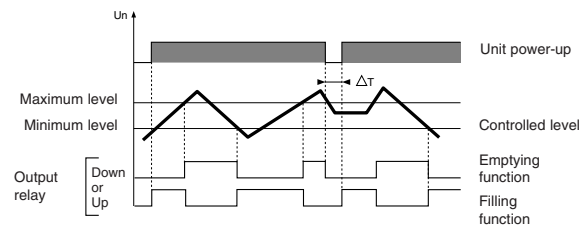
RF Emissions (EMC)

CENELAC EN 55022; Class A

ORDERING INFORMATION:

Voltage	Part Number	Type
24 VAC	84 870 001	EN, Pump Up/Pump Down Selectable
24 VAC	84 870 101	END, Pump Down Only
120 VAC	84 870 003	EN, Pump Up/Pump Down Selectable
120 VAC	84 870 103	END, Pump Down Only
230 VAC	84 870 004	EN, Pump Up/Pump Down Selectable
230 VAC	84 870 104	END, Pump Down Only

FILLING OR EMPTYING CONTROL (EN):



Regulation of two levels: Minimum / Maximum

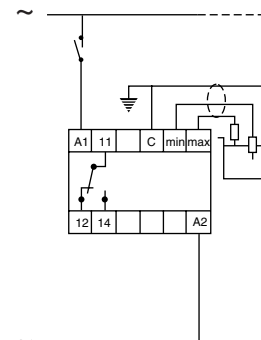
The output relay changes state when the level of liquid reaches the maximum electrode, with the minimum electrode submerged. It returns to its initial state when the minimum probe is no longer in contact with the liquid.

Regulation of one level:

Connect the maximum and common terminals together. The relay will change state when the minimum probe enters or leaves the liquid.

Note: If the power break ΔT lasts for 0.5 seconds or more, the relay reenergizes instantly if in «UP» mode and is deenergized if in «DOWN» mode.

WIRING:



Products and specifications subject to change without notice.
Consult factory for application assistance.