



Chipsmall Limited consists of a professional team with an average of over 10 year of expertise in the distribution of electronic components. Based in Hongkong, we have already established firm and mutual-benefit business relationships with customers from,Europe,America and south Asia,supplying obsolete and hard-to-find components to meet their specific needs.

With the principle of "Quality Parts,Customers Priority,Honest Operation,and Considerate Service",our business mainly focus on the distribution of electronic components. Line cards we deal with include Microchip,ALPS,ROHM,Xilinx,Pulse,ON,Everlight and Freescale. Main products comprise IC,Modules,Potentiometer,IC Socket,Relay,Connector.Our parts cover such applications as commercial,industrial, and automotives areas.

We are looking forward to setting up business relationship with you and hope to provide you with the best service and solution. Let us make a better world for our industry!



## Contact us

Tel: +86-755-8981 8866 Fax: +86-755-8427 6832

Email & Skype: info@chipsmall.com Web: www.chipsmall.com

Address: A1208, Overseas Decoration Building, #122 Zhenhua RD., Futian, Shenzhen, China



THIS DRAWING IS UNPUBLISHED. RELEASED FOR PUBLICATION - N/A -  
 © COPYRIGHT N/A BY TYCO ELECTRONICS CORPORATION. ALL RIGHTS RESERVED.

LOC	DIST	REVISIONS					
DF	S0	P	LTR	DESCRIPTION	DATE	DWN	APVD
		U		REV PER ECO-05-002357	08-05	AA	DE

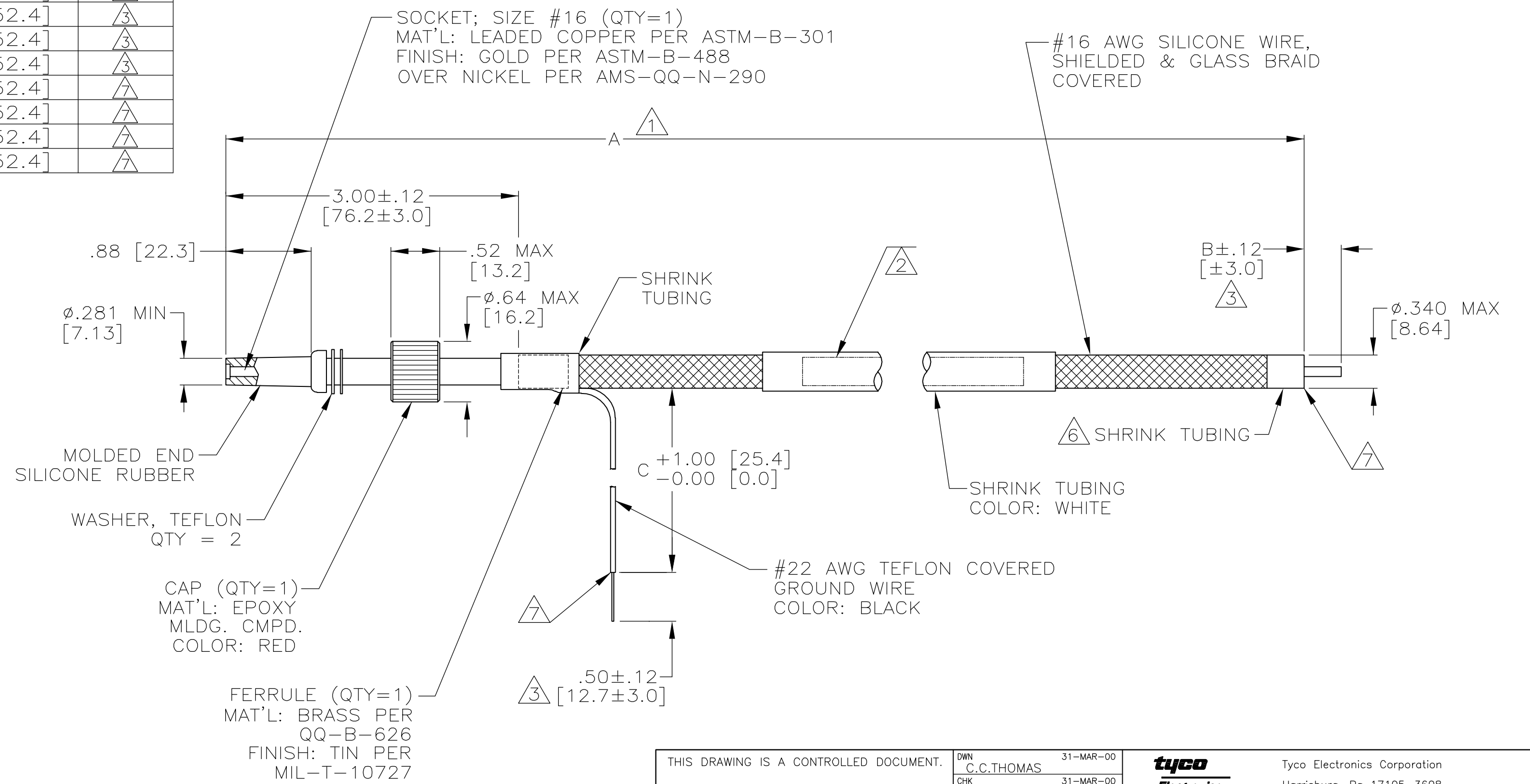
PART NO.	A	B	C	REMARKS
849099-1	22.00 [558.8]	.50 [12.7]	6.00 [152.4]	△3
849099-2	78.00 [1981.2]	.25 [6.3]	6.00 [152.4]	△3 OBSOLETE
849099-3	8.50 [215.9]	.25 [6.3]	6.00 [152.4]	△3
849099-4	36.00 [914.4]	-	6.00 [152.4]	△3
849099-5	19.00 [482.6]	.25 [6.3]	6.00 [152.4]	△3 OBSOLETE
849099-6	100.00 [2540.0]	.38 [9.7]	6.00 [152.4]	△3 OBSOLETE
849099-7	6.00 [152.4]	.38 [9.7]	6.00 [152.4]	△3 OBSOLETE
849099-8	60.00 [1524.0]	.38 [9.7]	6.00 [152.4]	△3 OBSOLETE
849099-9	24.00 [609.6]	.38 [9.7]	6.00 [152.4]	△3 OBSOLETE
1-849099-0	8.00 [203.2]	.38 [9.7]	6.00 [152.4]	△3 OBSOLETE
1-849099-1	13.00 [330.2]	.50 [12.7]	6.00 [152.4]	△3 OBSOLETE
1-849099-2	12.00 [304.8]	.38 [9.7]	6.00 [152.4]	△3 OBSOLETE
1-849099-3	9.00 [228.6]	.38 [9.7]	6.00 [152.4]	△3 OBSOLETE
1-849099-4	840.00 [21336.0]	.38 [9.7]	-	△3
1-849099-5	960.00 [24384.0]	.38 [9.7]	6.00 [152.4]	△3 OBSOLETE
1-849099-6	480.00 [12192.0]	.38 [9.7]	6.00 [152.4]	△3 OBSOLETE
1-849099-7	324.00 [8229.6]	.38 [9.7]	-	△3 OBSOLETE
1-849099-8	624.00 [15849.6]	.75 [19.0]	-	△3 OBSOLETE
1-849099-9	120.00 [3048.0]	.38 [9.7]	6.00 [152.4]	△3
2-849099-0	540.00 [13716.0]	.38 [9.7]	6.00 [152.4]	△3
2-849099-1	432.00 [10972.8]	.38 [9.7]	6.00 [152.4]	△3
2-849099-2	288.00 [7315.2]	.38 [9.7]	6.00 [152.4]	△3
2-849099-3	45.00 [1143.0]	.38 [9.7]	6.00 [152.4]	△3
6-849099-9	120.00 [3048.0]	.38 [9.7]	6.00 [152.4]	△7
7-849099-0	540.00 [13716.0]	.38 [9.7]	6.00 [152.4]	△7
7-849099-2	288.00 [7315.2]	.38 [9.7]	6.00 [152.4]	△7
7-849099-3	45.00 [1143.0]	.38 [9.7]	6.00 [152.4]	△7

- △1 TOLERANCE OF LEAD LENGTH:  
UP TO 24 INCHES [609.6] = ±.12 [±3.0]  
24 INCHES [609.6] & UP = ±1%
- △2 MARKED PER MIL-STD-130.
- △3 PIGTAILS ARE SOLDER DIPPED.
- 4. TO MATE WITH AMP LGH-1 RECEPTACLE WITH .88 [22.3] BARREL DEPTH.
- 5. OPERATING VOLTAGE: 20 KVDC AT 0 TO 70,000 FEET, -55°C TO 125°C.
- △6 SHRINK TUBING IS FOR HOLDING GLASS BRAID & SHIELDING TOGETHER. CUSTOMER TO STRIP & TERMINATE.
- △7 INSULATION CUT, BUT NOT REMOVED.

C

B

A



THIS DRAWING IS A CONTROLLED DOCUMENT.		DWN C.C.THOMAS 31-MAR-00	 Tyco Electronics Corporation Harrisburg, Pa 17105-3608																				
DIMENSIONS: INCHES [mm]		CHK D.EABY 31-MAR-00																					
TOLERANCES UNLESS OTHERWISE SPECIFIED:		APVD D.EABY 31-MAR-00																					
MATERIAL SEE CALLOUTS		FINISH SEE CALLOUTS																					
<table border="1"> <tr><td>0 PLC</td><td>± -</td></tr> <tr><td>1 PLC</td><td>± -</td></tr> <tr><td>2 PLC</td><td>± .02 [0.5]</td></tr> <tr><td>3 PLC</td><td>± -</td></tr> <tr><td>4 PLC</td><td>± -</td></tr> <tr><td>ANGLES</td><td>± -</td></tr> </table>		0 PLC	± -	1 PLC	± -	2 PLC	± .02 [0.5]	3 PLC	± -	4 PLC	± -	ANGLES	± -	NAME D.EABY 31-MAR-00	<table border="1"> <tr><td>SIZE</td><td>CAGE CODE</td><td>DRAWING NO</td><td>RESTRICTED TO</td></tr> <tr><td>A2</td><td>00779</td><td>C=849099</td><td>-</td></tr> </table>	SIZE	CAGE CODE	DRAWING NO	RESTRICTED TO	A2	00779	C=849099	-
0 PLC	± -																						
1 PLC	± -																						
2 PLC	± .02 [0.5]																						
3 PLC	± -																						
4 PLC	± -																						
ANGLES	± -																						
SIZE	CAGE CODE	DRAWING NO	RESTRICTED TO																				
A2	00779	C=849099	-																				
CUSTOMER DRAWING		WEIGHT -	SCALE 1:1																				
		SHEET 1 OF 1	REV U																				