



Chipsmall Limited consists of a professional team with an average of over 10 year of expertise in the distribution of electronic components. Based in Hongkong, we have already established firm and mutual-benefit business relationships with customers from,Europe,America and south Asia,supplying obsolete and hard-to-find components to meet their specific needs.

With the principle of “Quality Parts,Customers Priority,Honest Operation,and Considerate Service”,our business mainly focus on the distribution of electronic components. Line cards we deal with include Microchip,ALPS,ROHM,Xilinx,Pulse,ON,Everlight and Freescale. Main products comprise IC,Modules,Potentiometer,IC Socket,Relay,Connector.Our parts cover such applications as commercial,industrial, and automotives areas.

We are looking forward to setting up business relationship with you and hope to provide you with the best service and solution. Let us make a better world for our industry!



## Contact us

Tel: +86-755-8981 8866 Fax: +86-755-8427 6832

Email & Skype: info@chipsmall.com Web: www.chipsmall.com

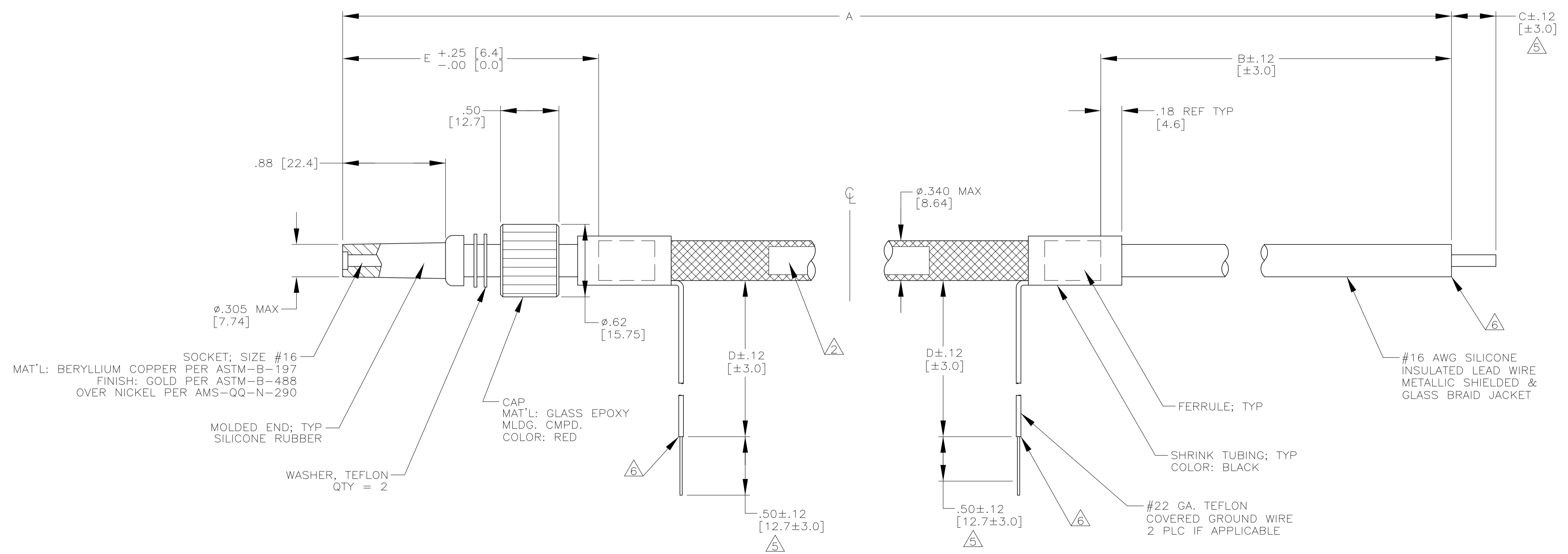
Address: A1208, Overseas Decoration Building, #122 Zhenhua RD., Futian, Shenzhen, China



LOC		DIST		REVISIONS			
DF	SO	REV	PER	DESCRIPTION	DATE	DWN	APVD
		R	REV PER	ECO-05-002357	08-05	AA	DE

PART NO.	A	B	C	D	E	F	REMARKS
849103-1	24.00 [609.6]	2.00 [50.8]	.38 [9.7]	6.00 [152.4]	2.00 [50.8]	-	△
849103-2	15.00 [381.0]	1.00 [25.4]	.50 [12.7]	6.00 [152.4]	2.00 [50.8]	-	△ OBSOLETE
849103-3	30.00 [762.0]	4.00 [101.6]	.38 [9.7]	6.00 [152.4]	3.00 [76.2]	6.00 [152.4]	△ OBSOLETE
849103-4	8.00 [203.2]	1.00 [25.4]	.38 [9.7]	6.00 [152.4]	2.00 [50.8]	-	△ OBSOLETE
849103-5	18.00 [457.2]	2.00 [50.8]	.38 [9.7]	6.00 [152.4]	2.00 [50.8]	6.00 [152.4]	△
849103-6	48.00 [1219.2]	2.00 [50.8]	-	6.00 [152.4]	2.00 [50.8]	6.00 [152.4]	△
849103-7	11.00 [279.4]	1.50 [38.1]	.38 [9.7]	-	2.00 [50.8]	6.00 [152.4]	△ OBSOLETE
849103-8	96.00 [2438.4]	2.00 [50.8]	.38 [9.7]	6.00 [152.4]	2.00 [50.8]	6.00 [152.4]	△
849103-9	120.00 [3048.0]	2.00 [50.8]	.38 [9.7]	6.00 [152.4]	2.00 [50.8]	6.00 [152.4]	△
1-849103-0	20.00 [508.0]	2.00 [50.8]	.38 [9.7]	6.00 [152.4]	2.00 [50.8]	6.00 [152.4]	△ OBSOLETE
1-849103-1	60.00 [1524.0]	2.00 [50.8]	.38 [9.7]	6.00 [152.4]	2.00 [50.8]	6.00 [152.4]	△
1-849103-2	46.00 [1168.4]	2.00 [50.8]	.38 [9.7]	6.00 [152.4]	2.00 [50.8]	6.00 [152.4]	△ OBSOLETE
1-849103-3	155.00 [3937.0]	2.00 [50.8]	.38 [9.7]	6.00 [152.4]	2.00 [50.8]	6.00 [152.4]	△ OBSOLETE
1-849103-4	480.00 [12192.0]	2.00 [50.8]	.38 [9.7]	6.00 [152.4]	2.00 [50.8]	6.00 [152.4]	△ OBSOLETE
1-849103-5	12.50 [317.5]	1.00 [25.4]	.50 [12.7]	10.00 [254.0]	3.00 [76.2]	-	△ OBSOLETE
1-849103-6	312.00 [7924.8]	2.00 [50.8]	.50 [12.7]	6.00 [152.4]	3.00 [76.2]	-	△ OBSOLETE
1-849103-7	84.00 [2133.6]	12.00 [304.8]	.38 [9.7]	6.00 [152.4]	3.00 [76.2]	6.00 [152.4]	△ OBSOLETE
1-849103-8	27.00 [685.8]	2.00 [50.8]	.38 [9.7]	6.00 [152.4]	2.00 [50.8]	6.00 [152.4]	△ OBSOLETE
1-849103-9	48.00 [1219.2]	2.00 [50.8]	.38 [9.7]	6.00 [152.4]	2.00 [50.8]	6.00 [152.4]	△
2-849103-0	72.00 [1828.8]	2.00 [50.8]	.38 [9.7]	6.00 [152.4]	2.00 [50.8]	6.00 [152.4]	△
2-849103-1	480.00 [12192.0]	2.00 [50.8]	.38 [9.7]	6.00 [152.4]	2.00 [50.8]	-	△ OBSOLETE
2-849103-2	8.00 [203.2]	1.00 [25.4]	.38 [9.7]	-	2.00 [50.8]	6.00 [152.4]	△ OBSOLETE
2-849103-3	240.00 [6096.0]	2.00 [50.8]	.38 [9.7]	6.00 [152.4]	2.00 [50.8]	6.00 [152.4]	△ OBSOLETE
2-849103-4	20.50 [520.7]	2.00 [50.8]	.38 [9.7]	6.00 [152.4]	2.00 [50.8]	6.00 [152.4]	△ OBSOLETE
2-849103-5	108.00 [2743.2]	2.00 [50.8]	.38 [9.7]	6.00 [152.4]	2.00 [50.8]	6.00 [152.4]	△ OBSOLETE
5-849103-5	18.00 [457.2]	2.00 [50.8]	.38 [9.7]	6.00 [152.4]	2.00 [50.8]	6.00 [152.4]	△
5-849103-6	48.00 [1219.2]	2.00 [50.8]	-	6.00 [152.4]	2.00 [50.8]	6.00 [152.4]	△
5-849103-8	96.00 [2438.4]	2.00 [50.8]	.38 [9.7]	6.00 [152.4]	2.00 [50.8]	6.00 [152.4]	△

- 1. TOLERANCE OF LEAD LENGTH:  
UP TO 24 INCHES [609.6] = ±.12 [±3.0]  
24 INCHES [609.6] & UP = ±1%
- 2. MARKED PER MIL-STD-130.
- 3. TO MATE WITH AMP LGH-1  
RECEPTACLE WITH .88 [22.4] BARREL DEPTH.
- 4. OPERATING VOLTAGE: 25 KVDC AT 0 TO 70,000 FEET,  
-55°C TO 125°C.
- 5. PIGTAILS ARE SOLDER DIPPED.
- 6. INSULATION CUT, BUT NOT REMOVED.



THIS DRAWING IS A CONTROLLED DOCUMENT.		DIN C.C.THOMAS 05-NOV-93		Tyco Electronics Corporation Harrisburg, Pa 17105-3608
DIMENSIONS: INCHES (mm)		CHK S.GLATFELTER 22-NOV-93		APVD S.GLATFELTER 22-NOV-93
TOLERANCES UNLESS OTHERWISE SPECIFIED:		0 PLC ± -	PRODUCT SPEC	SIZE A1
1 PLC ± .02		1 PLC ± .02	APPLICATION SPEC	SCALE 2:1
2 PLC ± .02 (0.5)		2 PLC ± .02	WEIGHT	SHEET 1 OF 1
3 PLC ± .02		3 PLC ± .02	CUSTOMER DRAWING	REV R
4 PLC ± .02		4 PLC ± .02		
ANGLES ± .5		FINISH -		
MATERIAL SEE CALLOUTS				