



Chipsmall Limited consists of a professional team with an average of over 10 year of expertise in the distribution of electronic components. Based in Hongkong, we have already established firm and mutual-benefit business relationships with customers from,Europe,America and south Asia,supplying obsolete and hard-to-find components to meet their specific needs.

With the principle of "Quality Parts,Customers Priority,Honest Operation,and Considerate Service",our business mainly focus on the distribution of electronic components. Line cards we deal with include Microchip,ALPS,ROHM,Xilinx,Pulse,ON,Everlight and Freescale. Main products comprise IC,Modules,Potentiometer,IC Socket,Relay,Connector.Our parts cover such applications as commercial,industrial, and automotives areas.

We are looking forward to setting up business relationship with you and hope to provide you with the best service and solution. Let us make a better world for our industry!



## Contact us

Tel: +86-755-8981 8866 Fax: +86-755-8427 6832

Email & Skype: info@chipsmall.com Web: www.chipsmall.com

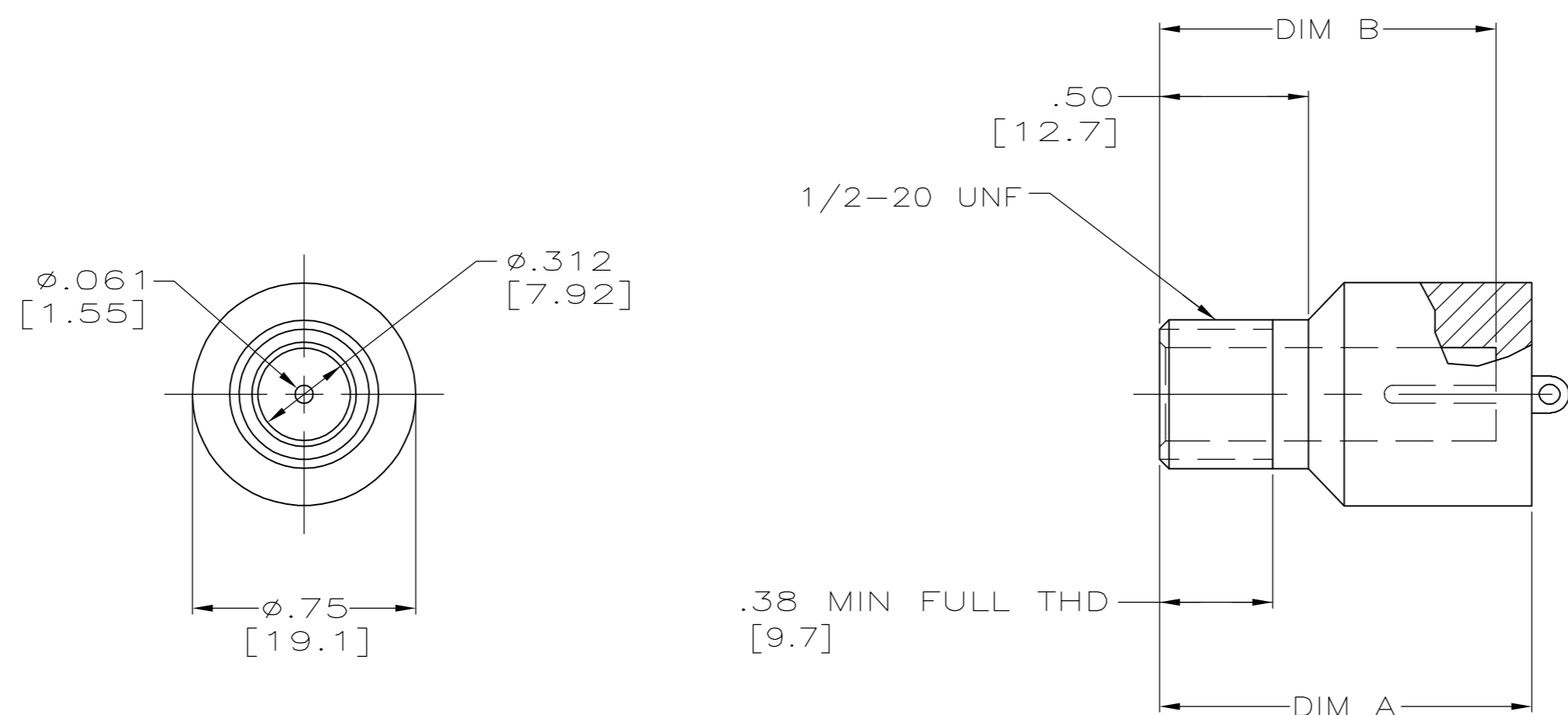
Address: A1208, Overseas Decoration Building, #122 Zhenhua RD., Futian, Shenzhen, China



THIS DRAWING IS UNPUBLISHED. RELEASED FOR PUBLICATION - .N/A .  
 © COPYRIGHT N/A BY TYCO ELECTRONICS CORPORATION. ALL RIGHTS RESERVED.

LOC	DIST	REVISIONS					
DF	S0	P	LTR	DESCRIPTION	DATE	DWN	APVD
		M		REV PER 0H14-0191-05	05-05	AA	DE

1. MARKED PER MIL-STD-130.
2. RECEPTACLE TO MATE WITH AMP LGH-1 LEAD ASSEMBLY, AVAILABLE SEPARATELY.



-	TIN PLATED	.75 [19.1]	.88 [22.4]	5-850306-4
-	TIN PLATED	.88 [22.4]	1.00 [25.4]	5-850306-3
OBSOLETE	GOLD PLATED	.75 [19.1]	.88 [22.4]	850306-8
OBSOLETE	GOLD PLATED	.88 [22.4]	1.00 [25.4]	850306-7
OBSOLETE	GOLD PLATED	1.00 [25.4]	1.12 [28.4]	850306-6
OBSOLETE	GOLD PLATED	1.12 [28.4]	1.25 [31.8]	850306-5
-	TIN-LEAD PLATED	.75 [19.1]	.88 [22.4]	850306-4
-	TIN-LEAD PLATED	.88 [22.4]	1.00 [25.4]	850306-3
OBSOLETE	TIN-LEAD PLATED	1.00 [25.4]	1.12 [28.4]	850306-2
OBSOLETE	TIN-LEAD PLATED	1.12 [28.4]	1.25 [31.8]	850306-1
REMARKS	PIN FINISH	DIM B	DIM A	PART NUMBER

THIS DRAWING IS A CONTROLLED DOCUMENT.		DWN C.C.THOMAS 28-OCT-96	Tyco Electronics Corporation Harrisburg, Pa 17105-3608	
DIMENSIONS: INCHES		CHK S.GLATFELTER 31-OCT-96		
TOLERANCES UNLESS OTHERWISE SPECIFIED:		APVD S.GLATFELTER 31-OCT-96	NAME RECEPTACLE MOLDED LGH-1	
		PRODUCT SPEC -	SIZE A2	
MATERIAL GLASS EPOXY COLOR: BLACK		APPLICATION SPEC -	CAGE CODE 00779	DRAWING NO C=850306
FINISH -		WEIGHT -	RESTRICTED TO -	SCALE 2:1
		CUSTOMER DRAWING	SHEET 1	OF 1
			REV M	

850306