



Chipsmall Limited consists of a professional team with an average of over 10 year of expertise in the distribution of electronic components. Based in Hongkong, we have already established firm and mutual-benefit business relationships with customers from,Europe,America and south Asia,supplying obsolete and hard-to-find components to meet their specific needs.

With the principle of “Quality Parts,Customers Priority,Honest Operation,and Considerate Service”,our business mainly focus on the distribution of electronic components. Line cards we deal with include Microchip,ALPS,ROHM,Xilinx,Pulse,ON,Everlight and Freescale. Main products comprise IC,Modules,Potentiometer,IC Socket,Relay,Connector.Our parts cover such applications as commercial,industrial, and automotives areas.

We are looking forward to setting up business relationship with you and hope to provide you with the best service and solution. Let us make a better world for our industry!



Contact us

Tel: +86-755-8981 8866 Fax: +86-755-8427 6832

Email & Skype: info@chipsmall.com Web: www.chipsmall.com

Address: A1208, Overseas Decoration Building, #122 Zhenhua RD., Futian, Shenzhen, China



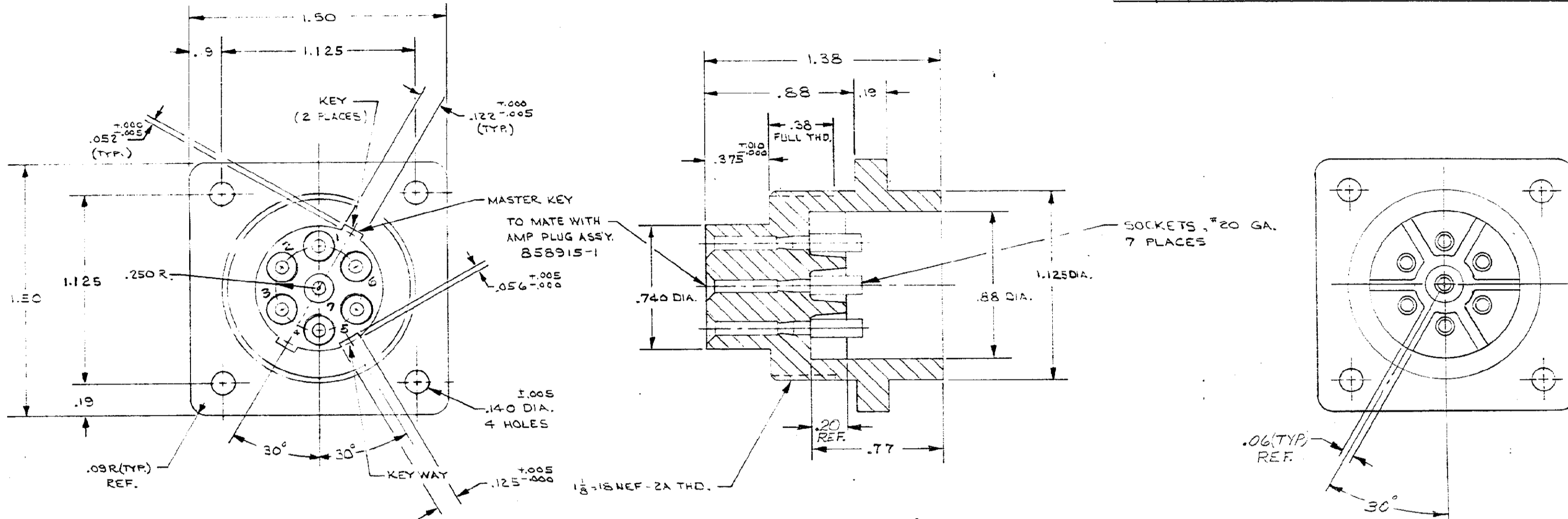
DRAWING MADE IN AMERICAN PROJECTION

© 1968 BY AMP INCORPORATED. ALL RIGHTS RESERVED. AMP PRODUCTS COVERED BY PATENTS AND/OR PATENTS PENDING.

THIS PRODUCT DESIGNED AND BUILT BY AMP INCORPORATED. NO LICENSE TO USE THIS DESIGN IN MANUFACTURE, OR TO USE ANY ISSUED OR PENDING PATENTS WHICH ARE INVOLVED, IS IMPLIED.

REVISIONS

ZONE	LTR	DESCRIPTION	DATE	APPROVED
A		1.125 WAS 1.250	C.D. 5/2/68	gws
B		1.125 WAS 1.250	C.D. 6/3/68	gws
C-4	C	REV. PIN NO'S 6-7-68	gws	gws
2-B 4-C	D	ADDED NOTES & .09 R.	gws	gws
2-C 3-C 4-C	E	ADDED DIMS TO KEYS & KEYWAY, ADDED .250 R, .740, .375, .38 DIMS.	gws	gws
	F	ADDED FINS TO REAR OF CONNECTOR	gws	gws
	G	REVISED PIN MARKING	R.F.N. 3-12-74	W.S.
	H	UP-DATED ECN 8364	R.G.P. 8-16-78	M.L.



NOTE:
1. CUSTOMER TO ATTACH LEADS & ENCAPSULATE AGAINST BREAKDOWN.
2. CONTACT NO'S. ARE MARKED ON RECEPTACLE

PART NO. IS THIS DWG - 1

QTY REQD	QTY REQD	ITEM NO.	DWG SIZE	PART OR IDENTIFYING NO.	NOMENCLATURE OR DESCRIPTION	SYMBOL
-2	-1					
PARTS LIST						
UNLESS OTHERWISE SPECIFIED: DIMENSIONS ARE IN INCHES TOLERANCES .00 = .03 ANGLES ±10°30' .000 = .010				CONTRACT NO. DR <i>Offshore</i> 3-6-68		
MATERIAL: MOLDED GLASS EPOXY				AMP INCORPORATED CAPITRON DIVISION ELIZABETHTOWN, PENNSYLVANIA		
FINISH: NATURAL				NAME RECEPTACLE 7 CONTACT LGH		
NEXT ASSY				DSGN APPD <i>gws</i> 3-7-68		
FINAL ASSY				OTHER APPD		
NEXT ASSY				SIZE CODE IDENT NO. NUMBER C 89110 858916		
USED ON				SCALE		
QTY REQD APPLICATION				WT		
				SHEET 1 OF 1		

D NUMBER 858916

C B A

D C B A