



Chipsmall Limited consists of a professional team with an average of over 10 year of expertise in the distribution of electronic components. Based in Hongkong, we have already established firm and mutual-benefit business relationships with customers from,Europe,America and south Asia,supplying obsolete and hard-to-find components to meet their specific needs.

With the principle of "Quality Parts,Customers Priority,Honest Operation,and Considerate Service",our business mainly focus on the distribution of electronic components. Line cards we deal with include Microchip,ALPS,ROHM,Xilinx,Pulse,ON,Everlight and Freescale. Main products comprise IC,Modules,Potentiometer,IC Socket,Relay,Connector.Our parts cover such applications as commercial,industrial, and automotives areas.

We are looking forward to setting up business relationship with you and hope to provide you with the best service and solution. Let us make a better world for our industry!



Contact us

Tel: +86-755-8981 8866 Fax: +86-755-8427 6832

Email & Skype: info@chipsmall.com Web: www.chipsmall.com

Address: A1208, Overseas Decoration Building, #122 Zhenhua RD., Futian, Shenzhen, China

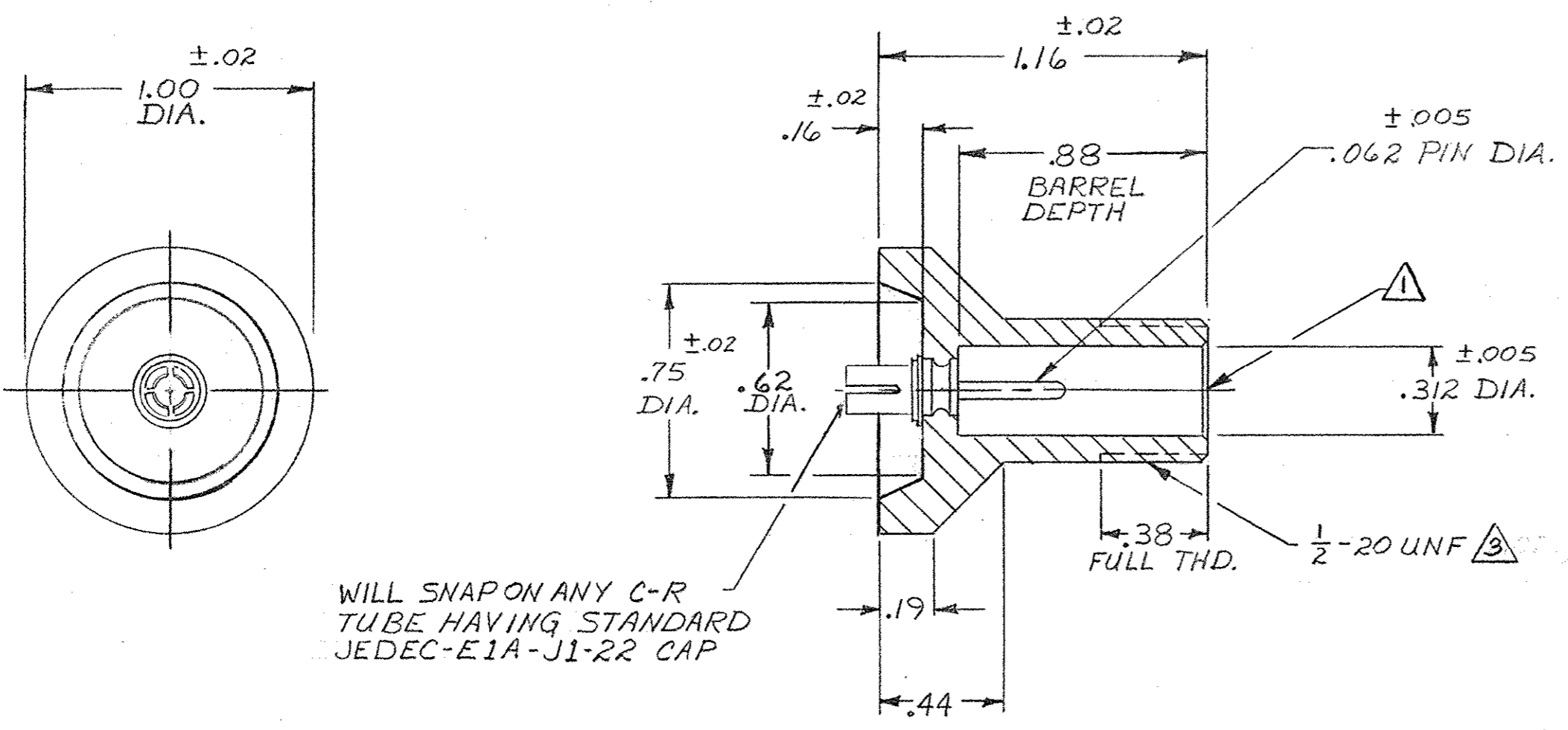


© 1971 BY AMP INCORPORATED. ALL RIGHTS RESERVED. AMP PRODUCTS COVERED BY PATENTS AND/OR PATENTS PENDING.

THIS PRODUCT DESIGNED AND BUILT BY AMP INCORPORATED. NO LICENSE TO USE THAT DESIGN IN MANUFACTURE, OR TO USE ANY ISSUED OR PENDING PATENTS WHICH ARE INVOLVED, IS IMPLIED.

Unpublished copy not to be reproduced or published without written permission of AMP Incorporated

REVISIONS				
ZONE	LTR	DESCRIPTION	DATE	APPROVED
	A	NOTE 2 ADDED.	OBS, 10-18-72	M.A.
	B	REV. PER E.C.N. 8681	AG 3-2-79	M.A.
	C	REV. CONTACT	RM 8/14/80	M.A.
✓	D	REV PER ECN S-3960	4-15-87	RS
✓	E	OBS-1 ECN OF 0376	2P 2-89	T.W.
	F	REV PER OH14-0192-05	1-06	PY



WILL SNAP ON ANY C-R TUBE HAVING STANDARD JEDEC-E1A-J1-22 CAP

RECEPTACLE TO MATE WITH AMP LGH-1 LEAD ASSEMBLY, AVAILABLE SEPARATELY.

2. PLATED PARTS ARE TO BE DE-BURRED BEFORE PLATING IN ALL CASES.

3. PER FEDERAL STANDARD H-28 3 WIRE METHOD. DIMENSION OVER WIRES TO BE .497-.510.

ITEM NO.	DWG SIZE	PART OR IDENTIFYING NO.	NOMENCLATURE OR DESCRIPTION	SYMBOL
5-859956-2			AS SHOWN WITH GOLD PLATED PIN PER ASTM-B-488, TYPE II, CLASS 5.0 & TIN PLATED TERMINAL PER ASTM-B-545 .00015 THK	
859956-2			AS SHOWN W/GOLD PLATED PIN PER ASTM-B-488, TYPE II, CLASS 5.0 & 93/7 TIN-LEAD PLATED TERMINAL .00015 THK	
OBS 859956-1			AS SHOWN W/TIN PLATED PIN PER ASTM-B-545, .0001 THK & 93/7 TIN-LEAD PLATED TERMINAL .00015 THK	

UNLESS OTHERWISE SPECIFIED: DIMENSIONS ARE IN INCHES TOLERANCES .00 = ± ANGLES = T .000 = ±				CONTRACT NO. DR <i>L. Leit 521-71</i> CHK APPD <i>Z. Johnson 5/24/71</i> APPD		AMP INCORPORATED CAPITRON DIVISION ELIZABETHTOWN, PENNSYLVANIA	
MATERIAL: MOLDED GLASS EPOXY				FINISH: BLACK		NAME LGH-1 RECEPTACLE WITH J1-22 C-R TUBE CONTACT LGH	
NEXT ASSY		FINAL ASSY		NEXT ASSY		USED ON	
QTY REQD		APPLICATION		DSGN APPD		OTHER APPD	
				SIZE		CODE IDENT NO. NUMBER	
				C		00779 859956	
				SCALE		WT SHEET 1 OF 1	