



Chipsmall Limited consists of a professional team with an average of over 10 year of expertise in the distribution of electronic components. Based in Hongkong, we have already established firm and mutual-benefit business relationships with customers from,Europe,America and south Asia,supplying obsolete and hard-to-find components to meet their specific needs.

With the principle of “Quality Parts,Customers Priority,Honest Operation,and Considerate Service”,our business mainly focus on the distribution of electronic components. Line cards we deal with include Microchip,ALPS,ROHM,Xilinx,Pulse,ON,Everlight and Freescale. Main products comprise IC,Modules,Potentiometer,IC Socket,Relay,Connector.Our parts cover such applications as commercial,industrial, and automotives areas.

We are looking forward to setting up business relationship with you and hope to provide you with the best service and solution. Let us make a better world for our industry!



Contact us

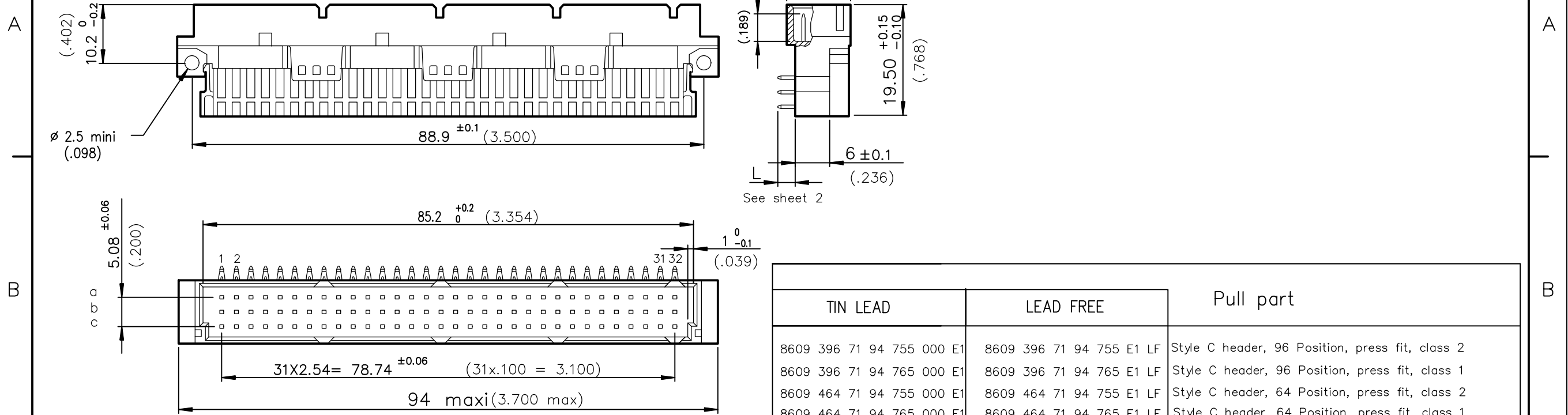
Tel: +86-755-8981 8866 Fax: +86-755-8427 6832

Email & Skype: info@chipsmall.com Web: www.chipsmall.com

Address: A1208, Overseas Decoration Building, #122 Zhenhua RD., Futian, Shenzhen, China



DIMENSIONS mm (inches)

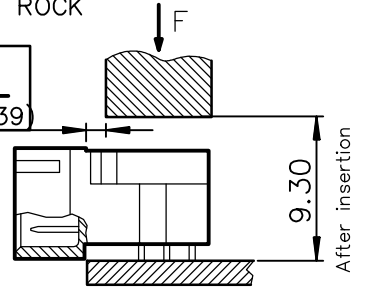


TIN LEAD	LEAD FREE	Pull part
8609 396 71 94 755 000 E1	8609 396 71 94 755 E1 LF	Style C header, 96 Position, press fit, class 2
8609 396 71 94 765 000 E1	8609 396 71 94 765 E1 LF	Style C header, 96 Position, press fit, class 1
8609 464 71 94 755 000 E1	8609 464 71 94 755 E1 LF	Style C header, 64 Position, press fit, class 2
8609 464 71 94 765 000 E1	8609 464 71 94 765 E1 LF	Style C header, 64 Position, press fit, class 1

Application specific part-numbers: See sheet 2

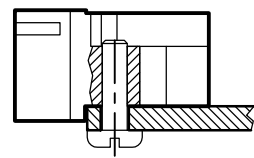
METHOD OF INSERTION ON THE PCB = FLAT ROCK

ATTENTION:
Minimum gap: 1mm (.039)



Recommended accessory :

loaded connectors with less than 64 cts require fixings with self-winding screws part number : 4514327



GENERAL CHARACTERISTICS AND ROHS INFORMATIONS:

SEE DRAWING C-8609-0000C

European Views

www.fciconnect.com		surface ISO 1302	tolerance std ISO 406 ISO 1101	projection	mm
		TOLERANCES UNLESS OTHERWISE SPECIFIED			
Dr	ROUILLARD	1995-04-25	ANGULAR	size A3	Scale 1.5
Eng	TARON	1995-04-25	LINEAR	ECN	I10-0217
Chr	S ALOSIOUS	2010-11-19	0.XX ±2	Product family	DIN 8609
Appr	BIJU K PAUL	2010-11-19	0.XXX ±2	Spec ref	-
FCi		title RIGHT ANGLE HEADER - STYLE C		dwg no	C-8609-0477
		PRESS FIT		Rev.	M
		catalog no		CUSTOMER	sheet 1 of 2

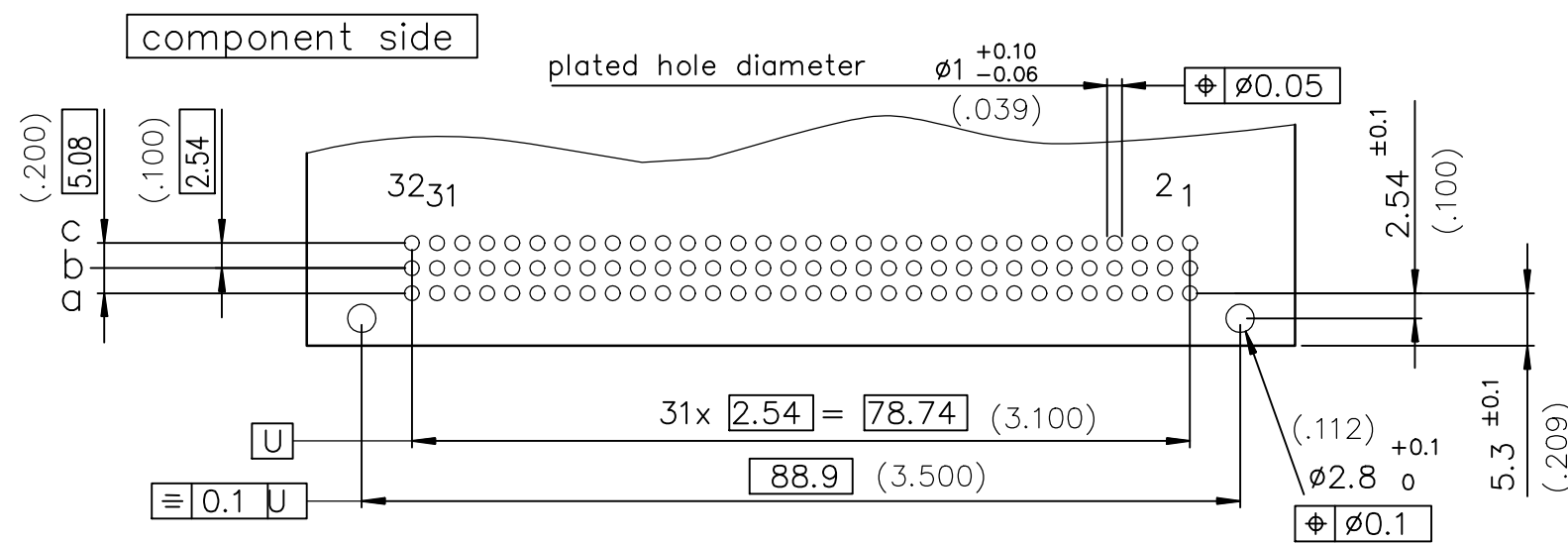
rev	ecn no	dr	date
J	-	ROU	2002-08-30
K	LS05-004	JTA	2005-02-26
L	LS06-0097	LGO	2006-07-25
M	I10-0217	SAL	2010-11-09
-	-	-	-
-	-	-	-
-	-	-	-



Copyright FCI.

PART NUMBER		8609			71		7		5	
PIN OUT										
rows a-b	-----	2	64							
rows a-b-c	-----	3	96							
rows a-c	-----	4	64							
NUMBER OF CONTACTS										
TERMINATION										
L = 2.80 ±0.20 (.110)	----- short post -----									94
PERFORMANCE CLASS										
DIN 41612 class 3	-----									4
DIN 41612 class 2	-----									5
DIN 41612 class 1	-----									6
TERMINATION TYPE										
TIN LEAD	-----									000E1
LEAD FREE	-----									E1LF

PCB LAYOUT



GENERAL CHARACTERISTICS AND ROHS INFORMATIONS:

SEE DRAWING C-8609-0000C

European Views

www.fciconnect.com		surface	tolerance std	projection	mm	
		ISO 1302 ✓	ISO 406 ISO 1101			
		TOLERANCES UNLESS OTHERWISE SPECIFIED			Scale 1.5	
Dr	ROUILLARD	1995-04-25	ANGULAR	size	A3	
Eng	TARON	1995-04-25	LINEAR	ECN	I10-0217	
Chr	S ALOSIUS	2010-11-19	0.XX' ±2'	Spec ref	-	
Appr	BIJU K PAUL	2010-11-19	Product family	DIN 8609		
		title		dwg no	Rev.	
		RIGHT ANGLE HEADER - STYLE C		C-8609-0477	M	
		PRESS FIT		CUSTOMER sheet 2 of 2		
		catalog no				

rev	ecn no	dr	date
J	-	ROU	2002/08/30
K	LS05-004	JTA	2005/02/26
L	LS06-0097	LGO	2006/07/25
M	I10-0217	SAL	2010-11-19
-	-	-	-
-	-	-	-
-	-	-	-



Copyright FCI.

REV F - 2006-04-17