



Chipsmall Limited consists of a professional team with an average of over 10 year of expertise in the distribution of electronic components. Based in Hongkong, we have already established firm and mutual-benefit business relationships with customers from,Europe,America and south Asia,supplying obsolete and hard-to-find components to meet their specific needs.

With the principle of “Quality Parts,Customers Priority,Honest Operation,and Considerate Service”,our business mainly focus on the distribution of electronic components. Line cards we deal with include Microchip,ALPS,ROHM,Xilinx,Pulse,ON,Everlight and Freescale. Main products comprise IC,Modules,Potentiometer,IC Socket,Relay,Connector.Our parts cover such applications as commercial,industrial, and automotives areas.

We are looking forward to setting up business relationship with you and hope to provide you with the best service and solution. Let us make a better world for our industry!



Contact us

Tel: +86-755-8981 8866 Fax: +86-755-8427 6832

Email & Skype: info@chipsmall.com Web: www.chipsmall.com

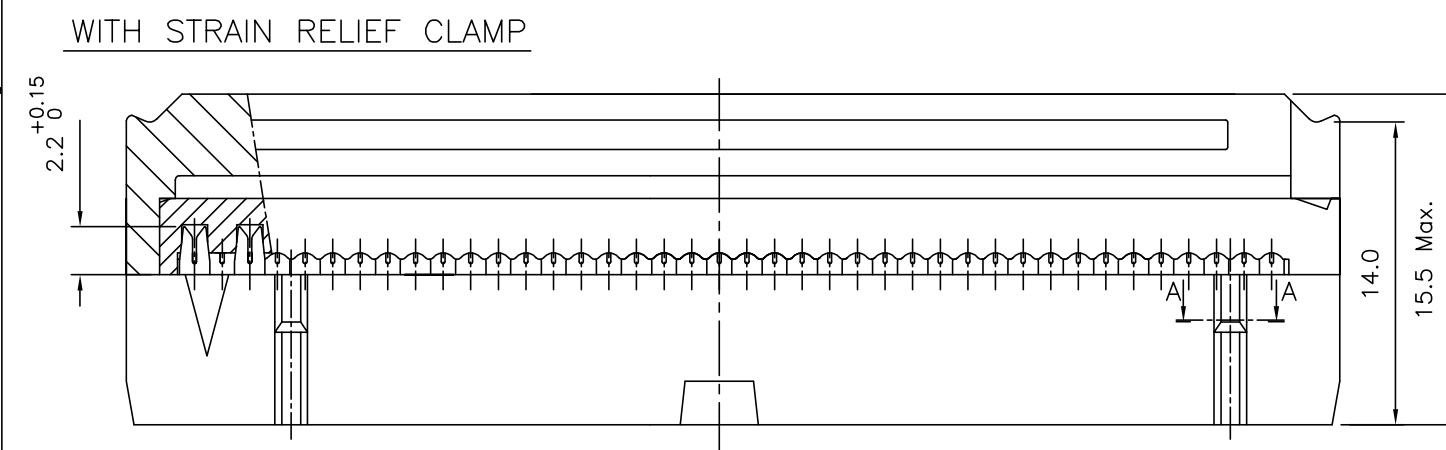
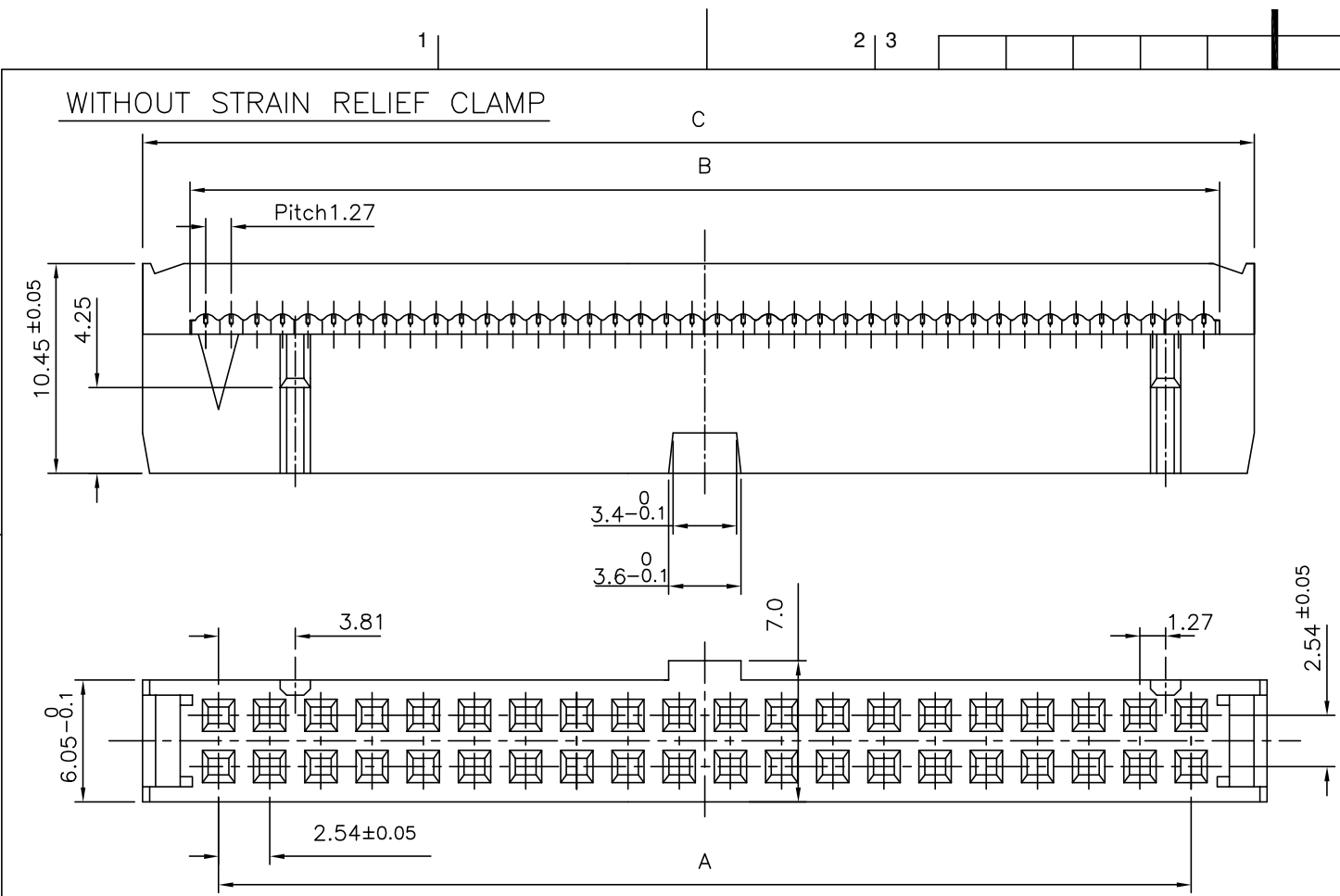
Address: A1208, Overseas Decoration Building, #122 Zhenhua RD., Futian, Shenzhen, China



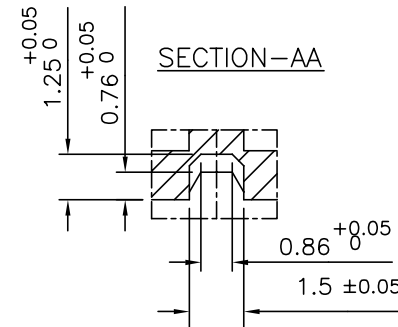
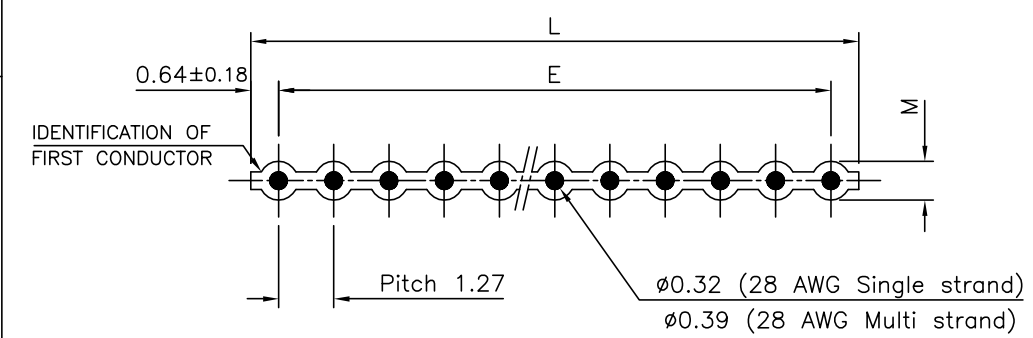


FQconnect.com

Copyright FCI



CABLE DIMENSIONS



NOTES:-
1. THE "LF" PRODUCTS MEET EUROPEAN UNION DIRECTIVES AND OTHER COUNTRY REGULATIONS AS DESCRIBED IN GS-22-008
2. LEAD FREE OR RoHS DIRECTIVE LABELING TO BE PROVIDED AS PER GS-14-920 FOR RoHS COMPATIBLE VERSION.

Number of contacts	64	78.74	81.58	86.08	80.01	81.28	0.89
	60	73.66	76.50	81.00	74.93	76.20	0.89
	50	60.96	63.80	68.30	62.23	63.50	0.89
	40	48.26	51.10	55.60	49.53	50.80	0.89
Dimensions							
		A ±0.05	B ^{+0.1} ₋₀	C ±0.1	E ±0.2	L ±0.32	M ±0.13

ORDERING INFORMATION

SERIES	8613	0	4	0	3	0	3	0	3	5	5		SPECIAL CODE
NO.OF CONTACTS :-													000 - TIN LEAD VERSION E1LF - LEAD FREE VERSION
40,50,60,64													LONGITUDINAL PITCH 5 - 2.54 mm
3 - FEMALE WITH CENTRAL POLARISING													PERFORMANCE CLASS 4 - DIN 41651 CLASS 3 5 - DIN 41651 CLASS 2 6 - DIN 41651 CLASS 1 8 - AS PER JSS 50810
0 - WITHOUT STRAIN RELIEF CLAMP 1 - WITH STRAIN RELIEF CLAMP													INSULATOR MATERIAL 3 - PBT GREY
TYPE OF TERMINATION 30 - INSULATION DISPLACEMENT 28 GAUGE													

TECHNICAL SPECIFICATION

HOUSING MATERIAL : THERMOPLASTIC POLYESTER UL 94V0; GREY
CONTACT MATERIAL : COPPER ALLOY
PLATING : ACTIVE ZONE - GOLD OVER NICKEL
TERMINATION ZONE - SnPb OVER Ni FOR TIN LEAD VERSION.
- Sn (MATTE TIN) OVER Ni FOR LEAD FREE VERSION.

CURRENT RATING : 1.5A AT 20°C
INSULATION RESISTANCE AT 500Vdc : ≥5000 MΩ at 100V
CONTACT RESISTANCE : ≤20 mΩ
DIELECTRIC WITHSTANDING VOLTAGE : 1000 Vrms
OPERATING TEMPERATURE : -55°C TO +125°C
REFERENCE SPECIFICATION : IEC 603-13 / DIN 41651

mat'l. code				surface		tolerance		projection		product family																																																																																																																																																																																																																																																																																																																																																																																																																																																																																																																																																																																																																																																																																																																																																																																																																																																																																																																																																																																																																																																																																																																																																																																																																					
-				ISO 1302		ISO 406 ISO 1101				8613																																																																																																																																																																																																																																																																																																																																																																																																																																																																																																																																																																																																																																																																																																																																																																																																																																																																																																																																																																																																																																																																																																																																																																																																																					
ltr	ecn no		dr	date		tolerances unless		otherwise specified		title																																																																																																																																																																																																																																																																																																																																																																																																																																																																																																																																																																																																																																																																																																																																																																																																																																																																																																																																																																																																																																																																																																																																																																																																																					
A	-		YMP	1998-12-06		angles		linear		.0±.1				FEMALE CONNECTOR FLAT CABLE 8613 SERIES																																																																																																																																																																																																																																																																																																																																																																																																																																																																																																																																																																																																																																																																																																																																																																																																																																																																																																																																																																																																																																																																																																																																																																																																																	
B	-		MINI	2002-04-22																																																																																																																																																																																																																																																																																																																																																																																																																																																																																																																																																																																																																																																																																																																																																																																																																																																																																																																																																																																																																																																																																																																																																																																																																											
C	I06-0066		MINI	2006-06-01		0'±1'				scale		-		dwg no								sheet 1 of 1		size A3																																																																																																																																																																																																																																																																																																																																																																																																																																																																																																																																																																																																																																																																																																																																																																																																																																																																																																																																																																																																																																																																																																																																																																																																							
D	I06-0173		MINI	2006-09-15		dr		YMP		1998-12-06																																																																																																																																																																																																																																																																																																																																																																																																																																																																																																																																																																																																																																																																																																																																																																																																																																																																																																																																																																																																																																																																																																																																																																																																																					
						engr		P.S.JOHN		1998-12-06																																																																																																																																																																																																																																																																																																																																																																																																																																																																																																																																																																																																																																																																																																																																																																																																																																																																																																																																																																																																																																																																																																																																																																																																																					
						chr		RAKHEE GEORGE		2006-09-15																																																																																																																																																																																																																																																																																																																																																																																																																																																																																																																																																																																																																																																																																																																																																																																																																																																																																																																																																																																																																																																																																																																																																																																																																					
						appd		RAKHEE GEORGE		2006-09-15				type										Product		Customer		Drawing																																																																																																																																																																																																																																																																																																																																																																																																																																																																																																																																																																																																																																																																																																																																																																																																																																																																																																																																																																																																																																																																																																																																																																																																			
sheet index		revision		D																																																																																																																																																																																																																																																																																																																																																																																																																																																																																																																																																																																																																																																																																																																																																																																																																																																																																																																																																																																																																																																																																																																																																																																																																											</