



Chipsmall Limited consists of a professional team with an average of over 10 year of expertise in the distribution of electronic components. Based in Hongkong, we have already established firm and mutual-benefit business relationships with customers from,Europe,America and south Asia,supplying obsolete and hard-to-find components to meet their specific needs.

With the principle of “Quality Parts,Customers Priority,Honest Operation,and Considerate Service”,our business mainly focus on the distribution of electronic components. Line cards we deal with include Microchip,ALPS,ROHM,Xilinx,Pulse,ON,Everlight and Freescale. Main products comprise IC,Modules,Potentiometer,IC Socket,Relay,Connector.Our parts cover such applications as commercial,industrial, and automotives areas.

We are looking forward to setting up business relationship with you and hope to provide you with the best service and solution. Let us make a better world for our industry!



Contact us

Tel: +86-755-8981 8866 Fax: +86-755-8427 6832

Email & Skype: info@chipsmall.com Web: www.chipsmall.com

Address: A1208, Overseas Decoration Building, #122 Zhenhua RD., Futian, Shenzhen, China





Specifications for "F" Connectors

F style connectors are the least expensive, general purpose connectors with non-constant impedance for use at 500 volts or less, and for use with low frequencies to 500Mhz. These coaxial connectors are widely used in Cable TV, MATV, CCTV, and related consumer television products. They are available in a limited selection to fit various cable sizes. **NOTE: See V-Bite 861V509ER6 -40dB @ 2.3GHz**

| MATERIALS | |
|--------------------------|-----------------|
| Connector Parts | Material |
| Connector Body and Parts | Brass |
| Male Contact Pin | Brass |
| Insulators | Polypropylene |
| Plating | Nickel |
| Ferrule | Annealed Copper |

| ELECTRICAL | |
|--------------------------------|---|
| Requirement | Performance |
| Impedance | Non Constant |
| Frequency Range | 0-500MHz (see below 861V509ER6 to 3GHz) |
| VSWR | 1.5 Max. |
| Working Voltage (At Sea level) | 500V rms |
| Insulation Resistance | 5000 Megohm Min. |
| Contact Resistance | 3 mW Max. |
| Test Voltage | 1000V r.m.s |

| MECHANICAL & ENVIRONMENTAL | |
|----------------------------|-----------------|
| Requirement | Performance |
| Durability | 500 Matings |
| Shock | 30 G |
| Cable Retention | 40 Lbs. Min. |
| Temperature Range | -40 to +65°C. |
| Moisture Range | Continuous Test |

S

FOR TECHNICAL SUPPORT: PHONE 973-347-4040 / FAX 973-347-2111

[back to index](#)

24

Plugs, Jacks, Adapters

F type plugs are available in three different crimp styles: two piece with separate ferrules, one piece crimp with a short crimp body and a one piece crimp with a long body. Also, a twist-on type for tool-less installations. Jacks for bulkhead, inline, or PC board, and a variety of adapters are all machined brass construction.

| Part Number | RoHS | Description | RG/U Cable | Fig. No. |
|-------------|------|---|------------|----------|
| 810A209A | ✓ | 2 Piece Crimp Plug, Short Ferrule | 6 | 117 |
| 810A209D | ✓ | 2 Piece Crimp Plug, Short Ferrule | 11 | 117 |
| 810A209G | ✓ | 2 Piece Crimp Plug, Short Ferrule | 59 | 117 |
| 810B209G | ✓ | 2 Piece Crimp Plug, Long Ferrule | 59 | 118 |
| 810D209A | ✓ | 2 Piece Crimp Plug, Short Ferrule | 6 | 117 |
| 810A209MV | ✓ | 4 Pc Crimp Mini Coax. Uses BD11007 Tool | 174 | 117A |
| 810D209D | ✓ | 1 Piece Crimp Plug, Short Ferrule | 11 | 119 |
| 810D209G | ✓ | 1 Piece Crimp Plug, Short Ferrule | 59 | 119 |
| 810E209A | ✓ | 1 Piece Crimp Plug, Long Ferrule | 6 | 120 |
| 810E209D | ✓ | 1 Piece Crimp Plug, Long Ferrule | 11 | 120 |
| 810E209G | ✓ | 1 Piece Crimp Plug, Long Ferrule | 59 | 120 |
| 810A409A | ✓ | Twist-On | 6 | 121 |
| 810A409G | ✓ | Twist-On | 59 | 121 |
| 810P209A | ✓ | Push-On | 6 | 122 |
| 810P209G | ✓ | Push-On | 59 | 122 |
| 816B519 | ✓ | Male Bulkhead Receptacle, 3/8-32 THD I.D. | Any | 130A |
| 826B519 | ✓ | Bulkhead Jack, Solder Tab | Any | 123 |
| 832A519N | ✓ | Inline Female/Female W/Nut & Washer | N/A | 124 |
| 830A509 | ✓ | Inline, Male/Male | N/A | 125 |
| 831B509 | ✓ | Inline Female/Male Push-On | N/A | 125A |
| 832A519 | ✓ | Inline Female/Female | N/A | 126 |
| 843A509 | ✓ | "T" Adapter, Female/Male/Female | N/A | 127 |
| 845A509 | ✓ | "T" Adapter, Female/Female/Female | N/A | 128 |
| 851A509 | ✓ | Right Angle Adapter, Male/Female | N/A | 129 |
| F0884 | ✓ | 75 Ohm Male Terminator | N/A | 130 |

✓ RoHS compliant [REQUEST QUOTE](#) [REQUEST DRAWING](#)

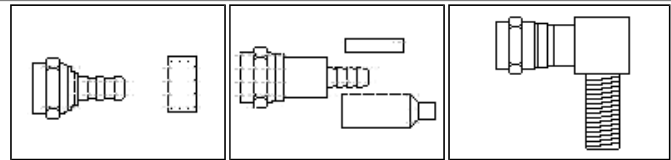


Fig. 117

Fig. 117A

Fig. 118

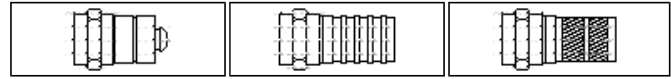


Fig. 119

Fig. 120

Fig. 121

Also See Push-EZ™ Next Page

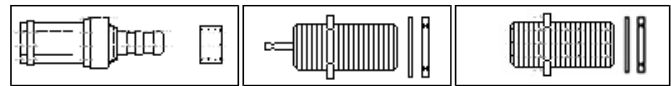


Fig. 122

Fig. 123

Fig. 124

Adapters & Terminators

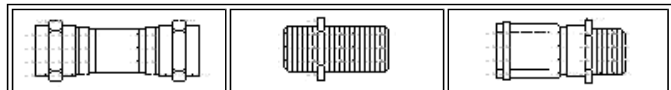


Fig. 125

Fig. 126

Fig. 125A

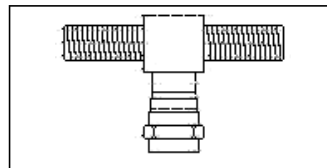


Fig. 127

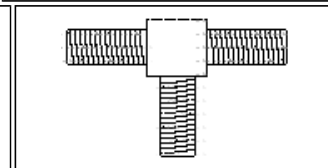


Fig. 128

S

This recessed male acts as a jack & allows for a replaceable female end by using a 832A519 adapter. Also, this can be used to accommodate any adapter with a female F interface on one side. The other end can be BNC, TNC, or any style available. (See adapter pages)

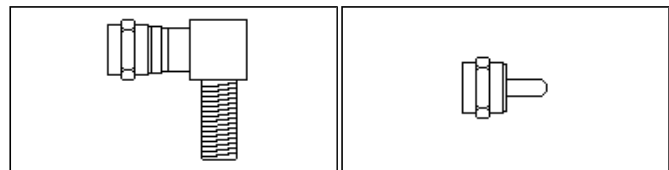
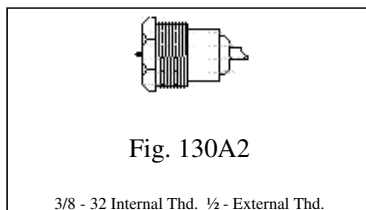


Fig. 129

Fig. 130

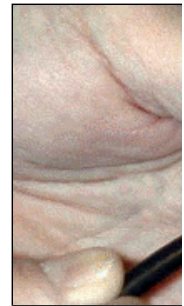
SS



S

Push EZ™ “F” Plugs With LIFT™

Bomar's exclusive LIFT® Technology (Low Insertion Force Termination) is used in the patented Push-EZ™ connector. It installs by simply stripping the cable and inserting it into the connector. That's it. And it will not pull out.
No crimp tooling required.



S

| Part Number | RoHS | Description | RG/U Cable | Body Plating |
|-------------|-------------------------------------|-------------------------------------|------------|--------------|
| 810PE209A | <input checked="" type="checkbox"/> | Push-EZ™ Plug with LIFT® Technology | 6 | Nickel |
| 810PE209G | <input checked="" type="checkbox"/> | Push-EZ™ Plug with LIFT® Technology | 59 | Nickel |
| 810PE205A | <input checked="" type="checkbox"/> | Push-EZ™ Plug with LIFT® Technology | 6 | Gold |
| 810PE205G | <input checked="" type="checkbox"/> | Push-EZ™ Plug with LIFT® Technology | 59 | Gold |

RoHS compliant [REQUEST QUOTE](#) [REQUEST DRAWING](#)

PC Board Connectors

| Part Number | RoHS | Description | RG/U Cable | Fig. No. |
|-------------|-------------------------------------|--|------------|----------|
| 861A509 | <input checked="" type="checkbox"/> | PC Board Jack, Vertical | N/A | 131 |
| 861V509E | <input checked="" type="checkbox"/> | V-Bite™ Edge Mount PC Jack | N/A | 131V |
| 861V509ER | <input checked="" type="checkbox"/> | V-Bite™ Reflow Type w/ TFE Insulator RG59 | N/A | 131V |
| 861V509ER6 | <input checked="" type="checkbox"/> | V-Bite™ Reflow Type w/ TFE Insulator RG6/59 (3GHz) | N/A | 131V |
| 864B509 | <input checked="" type="checkbox"/> | PC Board Jack, Right Angle, Long | N/A | 132 |
| 864B509HF | <input checked="" type="checkbox"/> | PC Board Jack, Right Angle, Long (3GHz) | N/A | 132 |
| 864B509S | <input checked="" type="checkbox"/> | PC Board Jack, Right Angle, Short | N/A | 133 |
| 866B509 | <input checked="" type="checkbox"/> | PC Board Male, Right Angle The Eliminator™ | N/A | 136B |

RoHS compliant reflow or wave solder only RoHS compliant wave solder only
[REQUEST QUOTE](#) [REQUEST DRAWING](#)





Fig. 131

The V-Bite™



Fig. 131V



Fig. 132



Fig. 135B

V-Bite™ Mounts on the PC board edge and is extremely anti-rotational. It locks into the board for soldering. Available in reflow soldering version.

V-Bite™ Mounts on the PC board edge and is extremely anti-rotational. It locks into the board for soldering. Available in reflow soldering version.

