



Chipsmall Limited consists of a professional team with an average of over 10 year of expertise in the distribution of electronic components. Based in Hongkong, we have already established firm and mutual-benefit business relationships with customers from,Europe,America and south Asia,supplying obsolete and hard-to-find components to meet their specific needs.

With the principle of "Quality Parts,Customers Priority,Honest Operation,and Considerate Service",our business mainly focus on the distribution of electronic components. Line cards we deal with include Microchip,ALPS,ROHM,Xilinx,Pulse,ON,Everlight and Freescale. Main products comprise IC,Modules,Potentiometer,IC Socket,Relay,Connector.Our parts cover such applications as commercial,industrial, and automotives areas.

We are looking forward to setting up business relationship with you and hope to provide you with the best service and solution. Let us make a better world for our industry!



Contact us

Tel: +86-755-8981 8866 Fax: +86-755-8427 6832

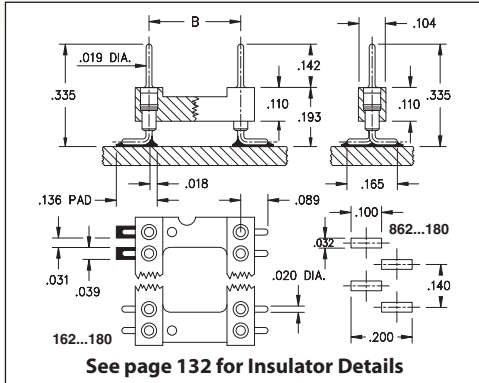
Email & Skype: info@chipsmall.com Web: www.chipsmall.com

Address: A1208, Overseas Decoration Building, #122 Zhenhua RD., Futian, Shenzhen, China

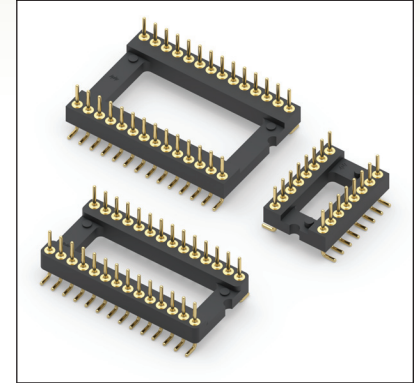


DUAL-IN-LINE HEADERS

SERIES 162, 862 • GULL WING SHRINK DIP HEADERS & STRIPS, SMT SOLDER TAIL



- Surface mount Gull Wing DIP headers & strips for adapters and board stacking applications with .070" lead spacing
- Gull wing terminals provide maximum strength and permit easy visual inspection of solder joints
- Series 162 and Series 862 use MM #6218 pins. See page 208 for details
- Insulators are high temperature thermoplastic, suitable for all soldering operations
- For Electrical, Mechanical and Environmental Data, see page 264 for details



Total number of pins	Pin Configuration			Quantity per tube	ORDERING INFORMATION					
	A	B	C							
16	0.572	0.3	0.39	35	162-10-316-30-180000					
28	0.992	0.4	0.49	20	162-10-428-30-180000					
30	1.062	0.4	0.49	18	162-10-430-30-180000					
48	1.692	0.4	0.49	12	162-10-448-30-180000					
20	0.712	0.6	0.69	28	162-10-620-30-180000					
28	0.992	0.6	0.69	20	162-10-628-30-180000					
40	1.412	0.6	0.69	14	162-10-640-30-180000					
42	1.482	0.6	0.69	13	162-10-642-30-180000					
48	1.692	0.6	0.69	12	162-10-648-30-180000					
52	1.832	0.6	0.69	11	162-10-652-30-180000					
56	1.972	0.6	0.69	10	162-10-656-30-180000					
64	2.252	0.6	0.69	9	162-10-664-30-180000					
68	2.392	0.6	0.69	8	162-10-668-30-180000					
64	2.252	0.75	0.84	8	162-10-764-30-180000					
XX=Plating Code See Below										
					SINGLE ROW STRIP SOCKET If desired, we will supply any length up to 21 pins.					
21	1.482	---	.104	---	862-10-021-30-180000					
See page 264 for coplanarity information					SPECIFY PLATING CODE XX =		10	◆		
					Pin Plating		10 μ" Au			