



Chipsmall Limited consists of a professional team with an average of over 10 year of expertise in the distribution of electronic components. Based in Hongkong, we have already established firm and mutual-benefit business relationships with customers from,Europe,America and south Asia,supplying obsolete and hard-to-find components to meet their specific needs.

With the principle of “Quality Parts,Customers Priority,Honest Operation,and Considerate Service”,our business mainly focus on the distribution of electronic components. Line cards we deal with include Microchip,ALPS,ROHM,Xilinx,Pulse,ON,Everlight and Freescale. Main products comprise IC,Modules,Potentiometer,IC Socket,Relay,Connector.Our parts cover such applications as commercial,industrial, and automotives areas.

We are looking forward to setting up business relationship with you and hope to provide you with the best service and solution. Let us make a better world for our industry!



Contact us

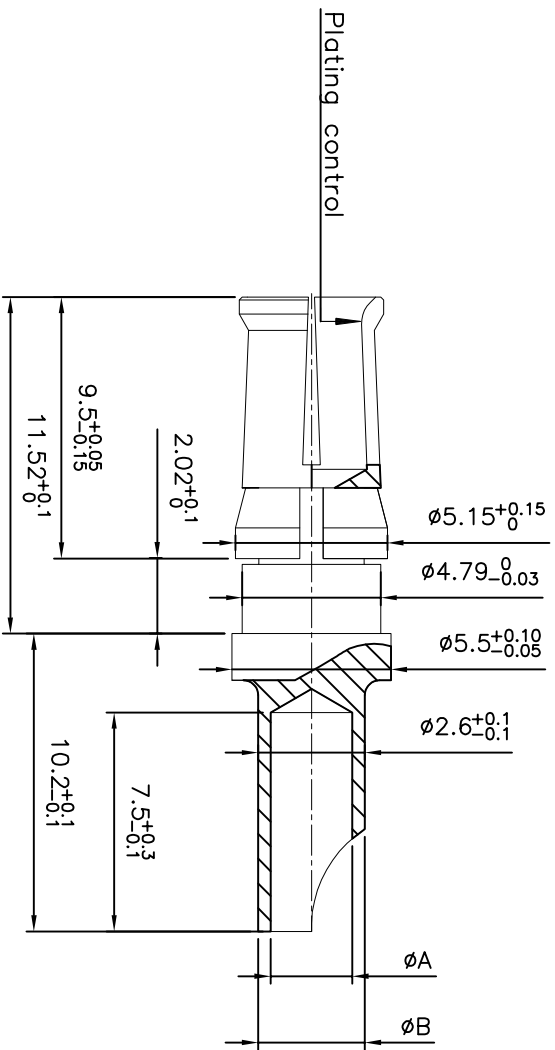
Tel: +86-755-8981 8866 Fax: +86-755-8427 6832

Email & Skype: info@chipsmall.com Web: www.chipsmall.com

Address: A1208, Overseas Decoration Building, #122 Zhenhua RD., Futian, Shenzhen, China



CONTACT PLATING : gold 0.40 μ over nickel 1 μ .



8630-3099NLF	Power contact (AWG 8)	4.40	5.00	3.90	8.98
8630-3057NLF	Power contact (AWG 12)	2.80	3.65	2.40	3.18
8630-3061NLF	Power contact (AWG 14)	2.10	3.00	1.70	1.91
8630-3065NLF	Power contact (AWG 16)	1.70	2.60	1.50	1.34
PART NUMBER	Designation	$\phi A^{+0.10}_0$	$\phi B^{+0.10}_0$	ϕ ame mm	Section mm ²

NOTE: RoHS INFORMATIONS

- The "LF" product meets European union Directives and other country regulations as described in GS-22-008.
- The product is not intended to be exposed to a manufacturing solder process.
- Packaging spec: see GS-14-920.

mat'l. code		ISO 1302	surface	tolerance	ISO 406	ISO 1101	projection	product family
lfr	ecn no	dr	date	tolerances unless otherwise specified	0.X	± 0.1		D-SUB
A	LS06-0022	MPE	2006/06/11	angles	linear	0.XX	± 0.1	POWER CONTACT (taille 8)
B	LS06-0095	LSO	2006/06/23	linear	0.XX	± 0.1	scale	removable contact
C	F-27591	ALA	2017/07/31	0.XX ± 2	0.XX	± 0.1	scale	dwg no
dr	M.PESSON	2006/06/11	engr	M.PESSON	2006/06/11	Amphenol FCI	sheet 1 of 1	size
chr	LEGARRE	2006/06/11	appd	LEGARRE	2006/06/11	Amphenol FCI	Customer	A3
sheet	revision	1	appd	LEGARRE	2006/06/11	Amphenol FCI	Drawing	
index	sheet	1						