



Chipsmall Limited consists of a professional team with an average of over 10 year of expertise in the distribution of electronic components. Based in Hongkong, we have already established firm and mutual-benefit business relationships with customers from,Europe,America and south Asia,supplying obsolete and hard-to-find components to meet their specific needs.

With the principle of “Quality Parts,Customers Priority,Honest Operation,and Considerate Service”,our business mainly focus on the distribution of electronic components. Line cards we deal with include Microchip,ALPS,ROHM,Xilinx,Pulse,ON,Everlight and Freescale. Main products comprise IC,Modules,Potentiometer,IC Socket,Relay,Connector.Our parts cover such applications as commercial,industrial, and automotives areas.

We are looking forward to setting up business relationship with you and hope to provide you with the best service and solution. Let us make a better world for our industry!



## Contact us

Tel: +86-755-8981 8866 Fax: +86-755-8427 6832

Email & Skype: info@chipsmall.com Web: www.chipsmall.com

Address: A1208, Overseas Decoration Building, #122 Zhenhua RD., Futian, Shenzhen, China



# 8000 series

## Momentary or alternate action pushbutton switches

*Distinctive features and specifications*

UG1410A



Bushing  $\varnothing$  6,35 (1/4) and  $\varnothing$  11,9 (15/32)

UL approved

### ELECTRICAL SPECIFICATIONS

- Max. current/voltage rating with resistive load :
  - silver contacts : 4A 30VDC
  - gold plated contacts : 0,4VA max. 20VAC or DC
- Initial contact resistance : 10 m $\Omega$  max.
- Insulation resistance : 1.000 M $\Omega$  min. at 500VDC
- Dielectric strength :
  - 1.000 Vrms 50 Hz min. between terminals
  - 2.000 Vrms 50 Hz min. between terminals and frame
- Electrical life : 30.000 cycles at full load

### MATERIALS

- Case : diallylphthalate (DAP)
- Actuator : brass, nickel plated
- Bushing : brass, nickel plated
- Housing : stainless steel
- Contacts
  - A** : silver
  - AD** : silver, gold plated
  - CD** : brass, gold plated
- Terminal seal : epoxy

### GENERAL SPECIFICATIONS

- Torque : 1,25 Nm (.922 Ft.lb) max. applied to nut
- Total travel : 2,70 mm (.106)
- Operating temperature : -40°C to +85°C

### AGENCY APPROVAL



**Availability** : consult factory for details of approved models.

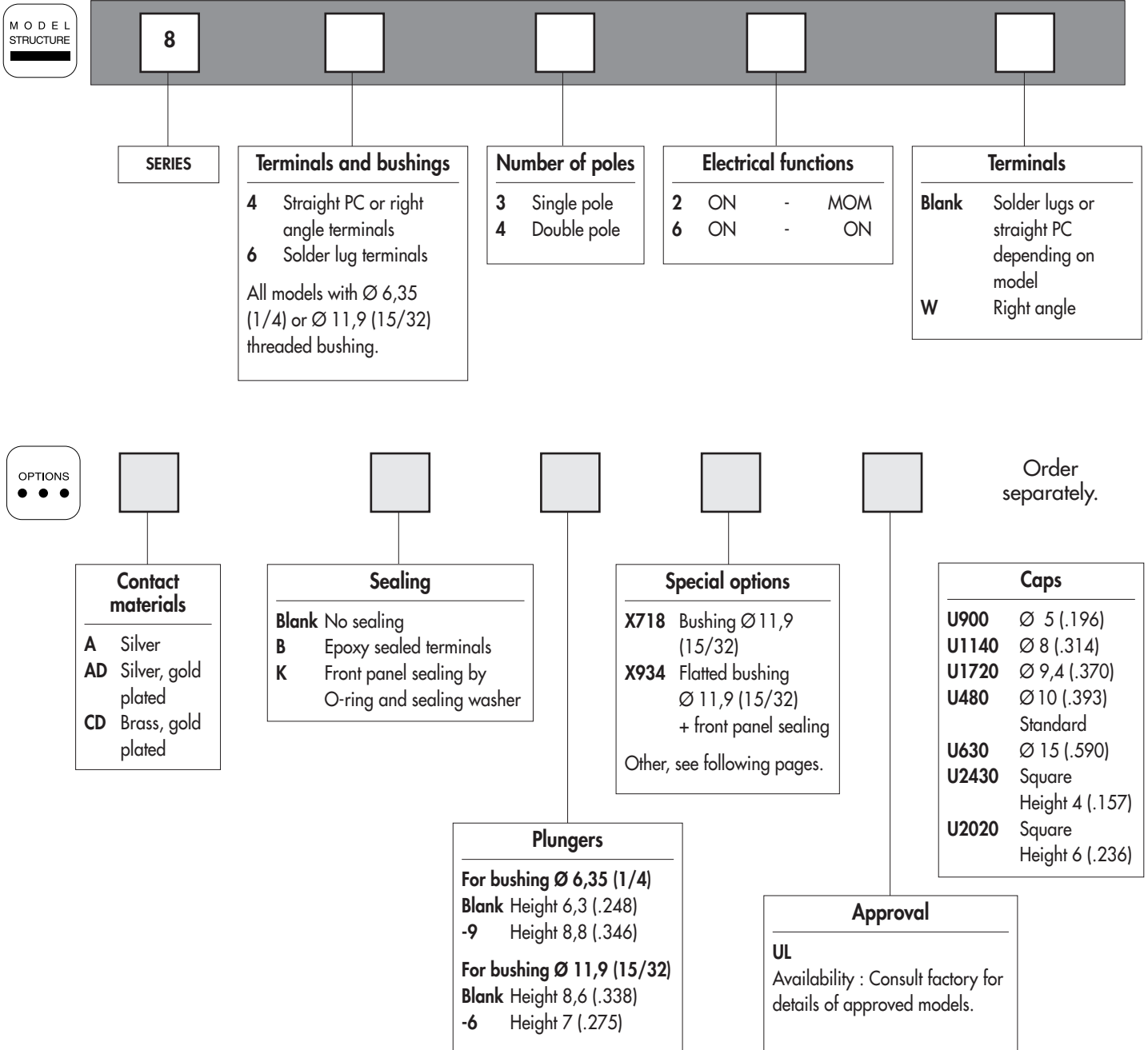
**Marking** : to order switches marked UL, complete appropriate box of ordering format.

The company reserves the right to change specifications without notice.

# 8000 series

## Momentary or alternate action pushbutton switches

Overview



### ABOUT THIS SERIES

On the following pages, you will find successively :

- model structure of switches
- options in the same order as in above chart

**Dimensions** : first dimensions are in mm while inches are shown as bracketed numbers.



**Sealing boots** are available to protect the switches against dust and water. They are presented in section H.



**Mounting accessories** : standard hardware supplied with all models : 2 hex nuts 8 mm (.314) across flats, 1 locking ring and 1 lockwasher.

Standard and special hardware available are presented in section I.

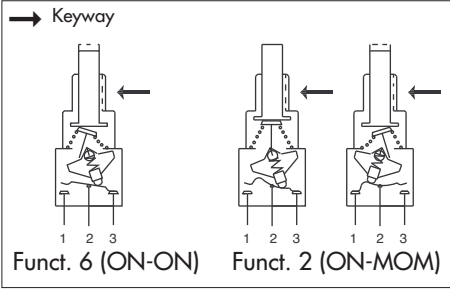


**Packaging unit** : 50 pieces, except 8000W (25 pieces).

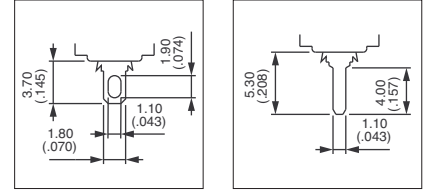
# 8000 series

## Momentary or alternate action pushbutton switches

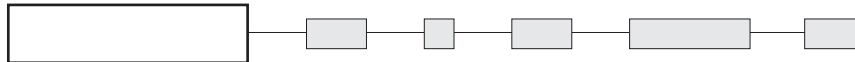
Threaded bushing  $\varnothing 6,35 (1/4)$



- Solder lug, straight PC or right angle terminals
- 1 and 2 pole configurations
- Button returns in upper position after actuation.



### MODEL STRUCTURE



Shown with standard plunger

### Solder lug terminals : 8600



Single pole  
**8632**  
**8636**

Double pole  
**8642**  
**8646**



2-3



1-2

ON

MOM

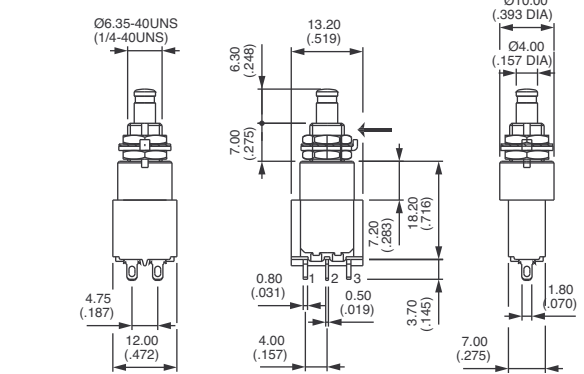
2-3

1-2

ON

MOM

→ Keyway



### Straight PC terminals : 8400



Single pole  
**8432**  
**8436**

Double pole  
**8442**  
**8446**



2-3



1-2

ON

MOM

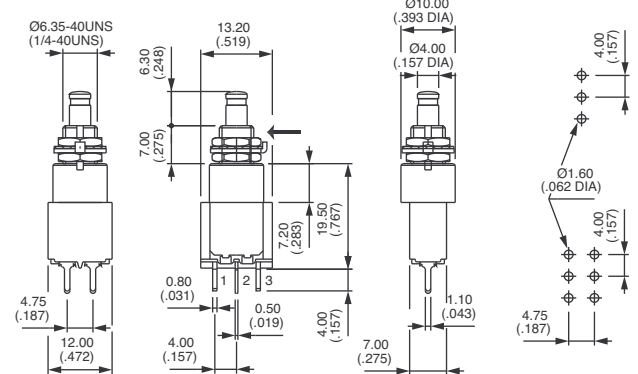
2-3

1-2

ON

MOM

→ Keyway



### Right angle terminals - horizontal : 8400W



Single pole  
**8432W**  
**8436W**

Double pole  
**8442W**  
**8446W**



2-3



1-2

ON

MOM

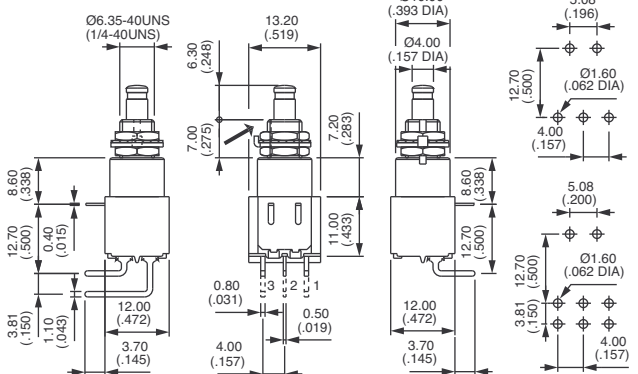
2-3

1-2

ON

MOM

→ Keyway

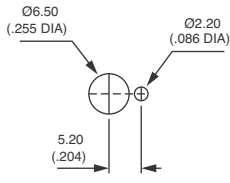




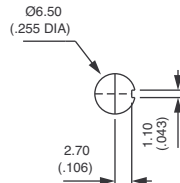
# 8000 series

Momentary or alternate action pushbutton switches

## PANEL CUT-OUT



Standard



With K sealing option

## CONTACT MATERIALS

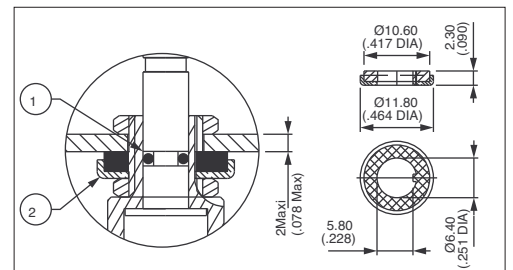


- A Silver
- AD Silver, gold plated
- CD Brass, gold plated

## SEALING



- Blank No sealing
  - B Epoxy sealed terminals
  - K Front panel sealing by one O-ring and sealing washer. Protects the switch against water and dust. Panel seal withstands 1 bar pressure.
  - KB Combined sealings
- Sealing boot : see section H.



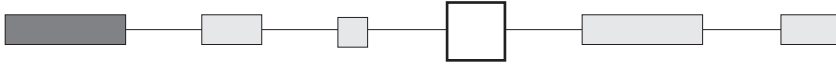
- ① O-ring
- ② Sealing washer

# 8000 series

Momentary or alternate action pushbutton switches

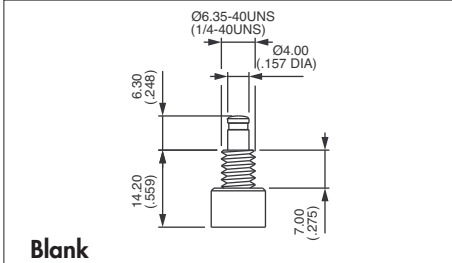


## PLUNGERS



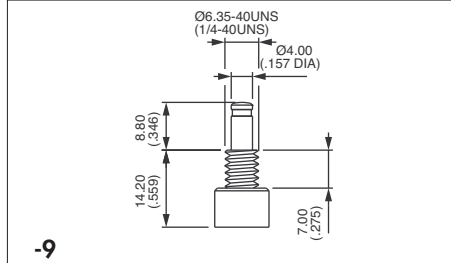
For  $\varnothing 6,35$  (1/4) bushing

Dash compulsory before plunger code.



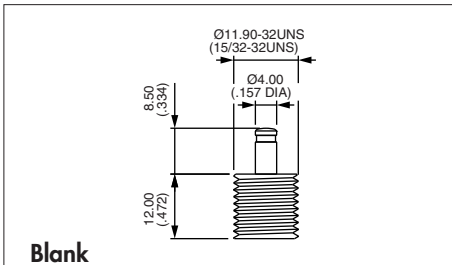
Blank

Standard

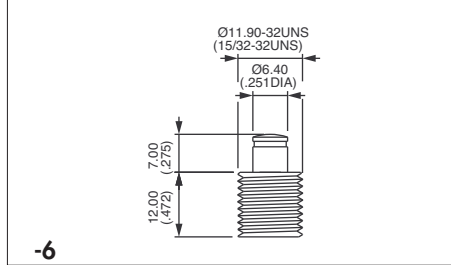


-9

For  $\varnothing 11,9$  (15/32) bushing (X718 models)

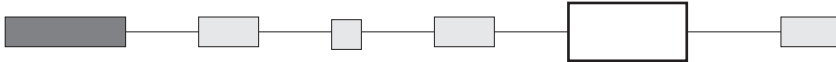


Blank



-6

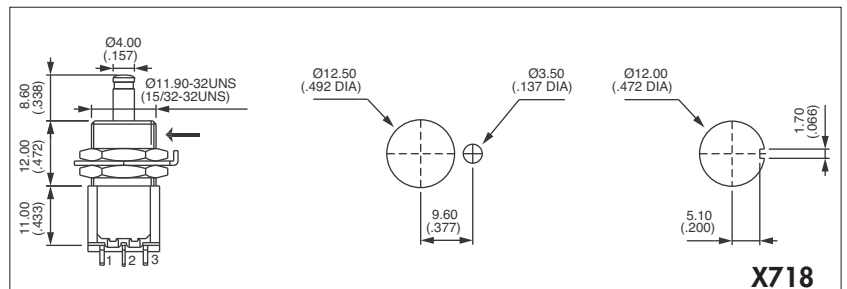
## SPECIAL OPTIONS



**X601** Silver plated brass contacts

Current/voltage rating for an electrical life of 20.000 cycles : 0,5A 30VDC.  
Minimum quantity : 5.000 pieces per model and shipment.

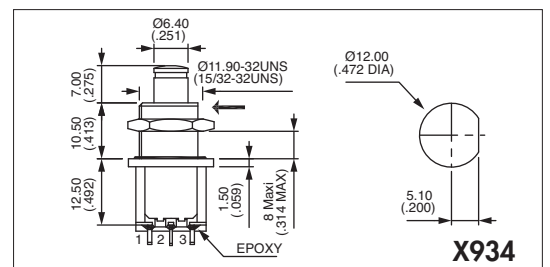
**X718** Bushing  $\varnothing 11,9$  (15/32)  
For all basic models (solder lug straight PC or right angle terminals)  
Available with plungers 13 and 6.  
K sealing option available.



**X718**

**X748** Snap-in mounting. Consult factory  
Panel cut-out 15 x 12,5 (.59 x .492)

**X934** Flatted bushing  $\varnothing 11,9$  (15/32) + sealing by two O-rings  
(for plunger -6 only). Epoxy sealed terminals.



**X934**

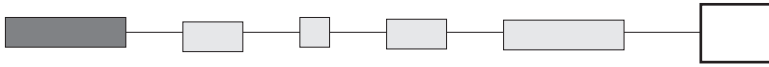
B2



# 8000 series

## Momentary or alternate action pushbutton switches

### APPROVAL



### UL

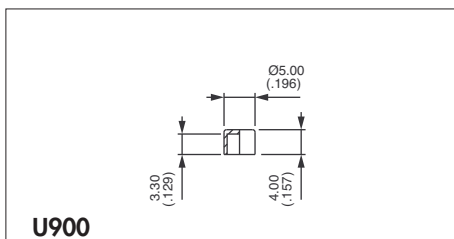
**Availability** : consult factory for details of approved models.

**Marking** : to order switches marked UL, complete above box with "UL".

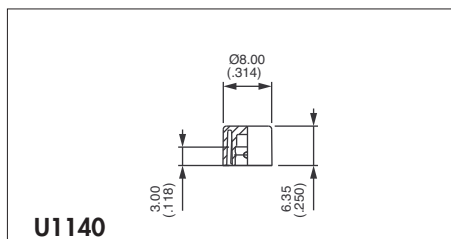
### CAPS

Order separately.

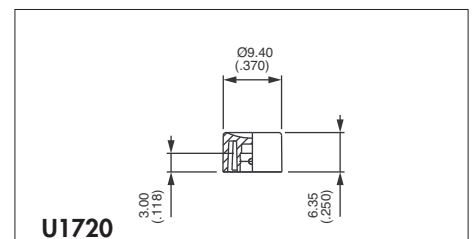
The caps below are for Ø 4 mm plungers (standard and -9), except U2600.



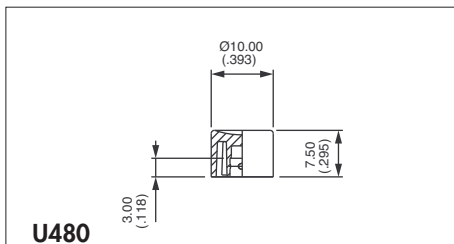
**U900**



**U1140**

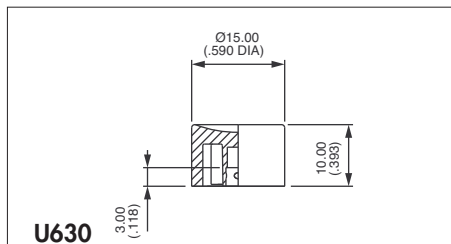


**U1720**



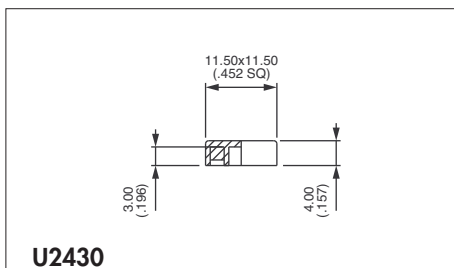
**U480**

Standard



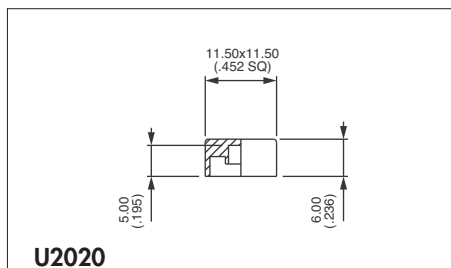
**U630**

Cap colours	
Replace last "0" by number	
1	blue
1/4	dark blue
2	black
3	green
4	grey
5	yellow
6	red
7	ivory
7/1	white
9	orange



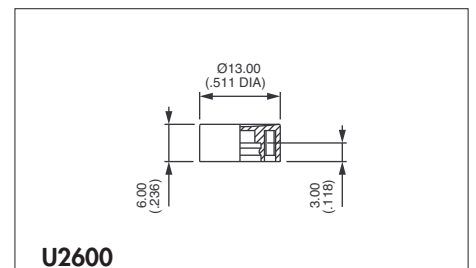
**U2430**

Square



**U2020**

Square

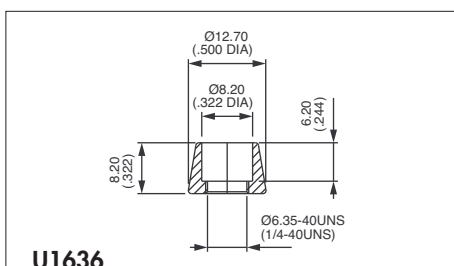


**U2600**

For large plunger -6 only.

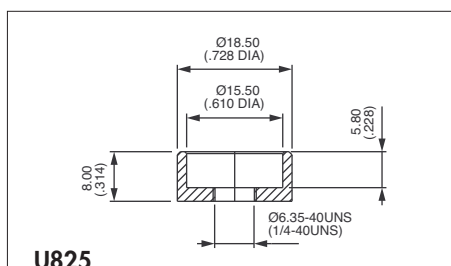
### DRESS NUTS

Chrome plated. Order separately.



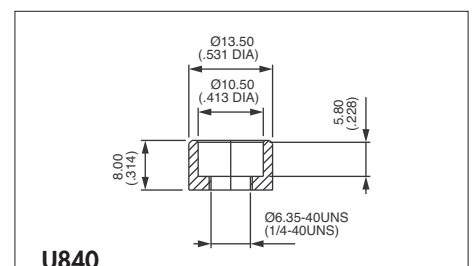
**U1636**

For cap U1140



**U825**

For cap U630



**U840**

For cap U480