



Chipsmall Limited consists of a professional team with an average of over 10 year of expertise in the distribution of electronic components. Based in Hongkong, we have already established firm and mutual-benefit business relationships with customers from,Europe,America and south Asia,supplying obsolete and hard-to-find components to meet their specific needs.

With the principle of “Quality Parts,Customers Priority,Honest Operation,and Considerate Service”,our business mainly focus on the distribution of electronic components. Line cards we deal with include Microchip,ALPS,ROHM,Xilinx,Pulse,ON,Everlight and Freescale. Main products comprise IC,Modules,Potentiometer,IC Socket,Relay,Connector.Our parts cover such applications as commercial,industrial, and automotives areas.

We are looking forward to setting up business relationship with you and hope to provide you with the best service and solution. Let us make a better world for our industry!



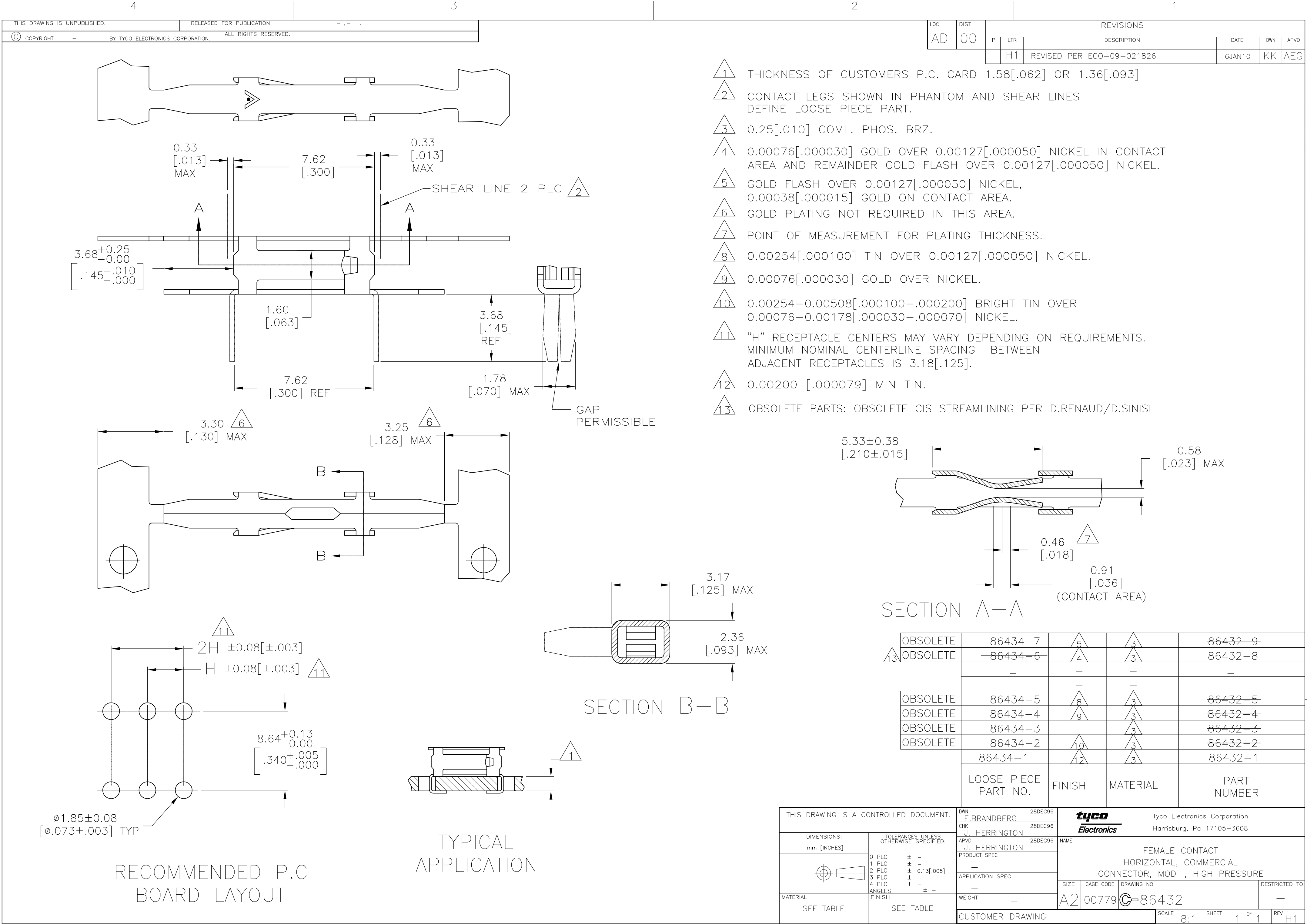
Contact us

Tel: +86-755-8981 8866 Fax: +86-755-8427 6832

Email & Skype: info@chipsmall.com Web: www.chipsmall.com

Address: A1208, Overseas Decoration Building, #122 Zhenhua RD., Futian, Shenzhen, China

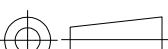




- 1 THICKNESS OF CUSTOMERS P.C. CARD 1.58[.062] OR 1.36[.093]
- 2 CONTACT LEGS SHOWN IN PHANTOM AND SHEAR LINES DEFINE LOOSE PIECE PART.
- 3 0.25[.010] COML. PHOS. BRZ.
- 4 0.00076[.000030] GOLD OVER 0.00127[.000050] NICKEL IN CONTACT AREA AND REMAINDER GOLD FLASH OVER 0.00127[.000050] NICKEL.
- 5 GOLD FLASH OVER 0.00127[.000050] NICKEL, 0.00038[.000015] GOLD ON CONTACT AREA.
- 6 GOLD PLATING NOT REQUIRED IN THIS AREA.
- 7 POINT OF MEASUREMENT FOR PLATING THICKNESS.
- 8 0.00254[.000100] TIN OVER 0.00127[.000050] NICKEL.
- 9 0.00076[.000030] GOLD OVER NICKEL.
- 10 0.00254-0.00508[.000100-.000200] BRIGHT TIN OVER 0.00076-0.00178[.000030-.000070] NICKEL.
- 11 "H" RECEPTACLE CENTERS MAY VARY DEPENDING ON REQUIREMENTS. MINIMUM NOMINAL CENTERLINE SPACING BETWEEN ADJACENT RECEPTACLES IS 3.18[.125].
- 12 0.00200 [.000079] MIN TIN.
- 13 OBSOLETE PARTS: OBSOLETE CIS STREAMLINING PER D.RENAUD/D.SINISI

SECTION A-A

13	OBSOLETE	86434-7	5	3	86432-9
	OBSOLETE	86434-6	4	3	86432-8
		-	-	-	-
		-	-	-	-
	OBSOLETE	86434-5	8	3	86432-5
	OBSOLETE	86434-4	9	3	86432-4
	OBSOLETE	86434-3		3	86432-3
	OBSOLETE	86434-2	10	3	86432-2
		86434-1	12	3	86432-1
	LOOSE PIECE PART NO.		FINISH	MATERIAL	PART NUMBER

THIS DRAWING IS A CONTROLLED DOCUMENT.		DWN E.BRANDBERG	28DEC96	tyco Electronics Tyco Electronics Corporation Harrisburg, Pa 17105-3608						
		CHK J. HERRINGTON	28DEC96							
DIMENSIONS: mm [INCHES]		TOLERANCES UNLESS OTHERWISE SPECIFIED:		APVD J. HERRINGTON	28DEC96	NAME				
		0 PLC ± -		PRODUCT SPEC		FEMALE CONTACT HORIZONTAL, COMMERCIAL CONNECTOR, MOD I, HIGH PRESSURE				
		1 PLC ± -		—						
		2 PLC ± 0.13[.005]		—						
		3 PLC ± -		APPLICATION SPEC						
		4 PLC ± -		—						
MATERIAL		ANGLES ± -		—		SIZE	CAGE CODE	DRAWING NO	RESTRICTED TO	
SEE TABLE		FINISH		WEIGHT —		A2	00779	C-86432	—	
		SEE TABLE		CUSTOMER DRAWING				SCALE 8:1	SHEET 1 OF 1	REV H1