



Chipsmall Limited consists of a professional team with an average of over 10 year of expertise in the distribution of electronic components. Based in Hongkong, we have already established firm and mutual-benefit business relationships with customers from,Europe,America and south Asia,supplying obsolete and hard-to-find components to meet their specific needs.

With the principle of “Quality Parts,Customers Priority,Honest Operation,and Considerate Service”,our business mainly focus on the distribution of electronic components. Line cards we deal with include Microchip,ALPS,ROHM,Xilinx,Pulse,ON,Everlight and Freescale. Main products comprise IC,Modules,Potentiometer,IC Socket,Relay,Connector.Our parts cover such applications as commercial,industrial, and automotives areas.

We are looking forward to setting up business relationship with you and hope to provide you with the best service and solution. Let us make a better world for our industry!



Contact us

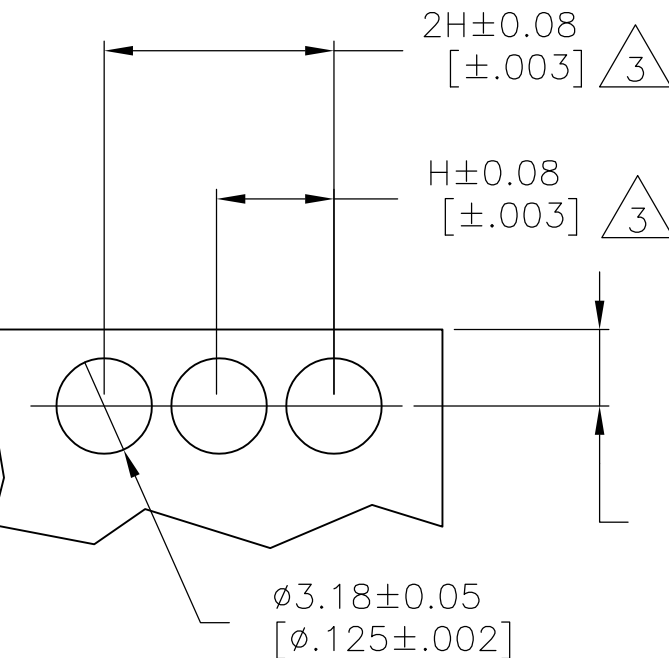
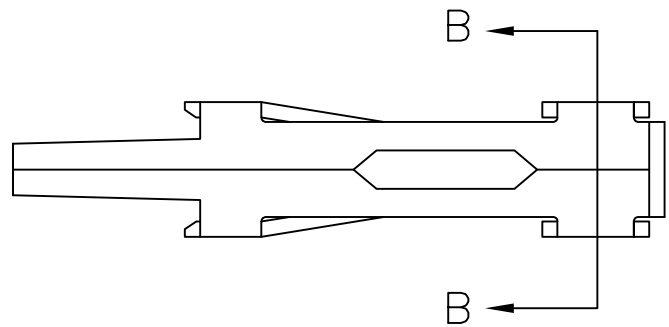
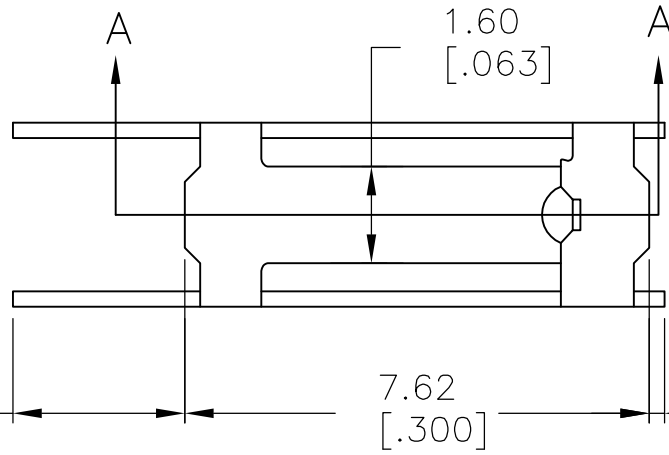
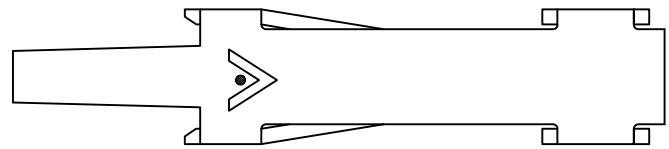
Tel: +86-755-8981 8866 Fax: +86-755-8427 6832

Email & Skype: info@chipsmall.com Web: www.chipsmall.com

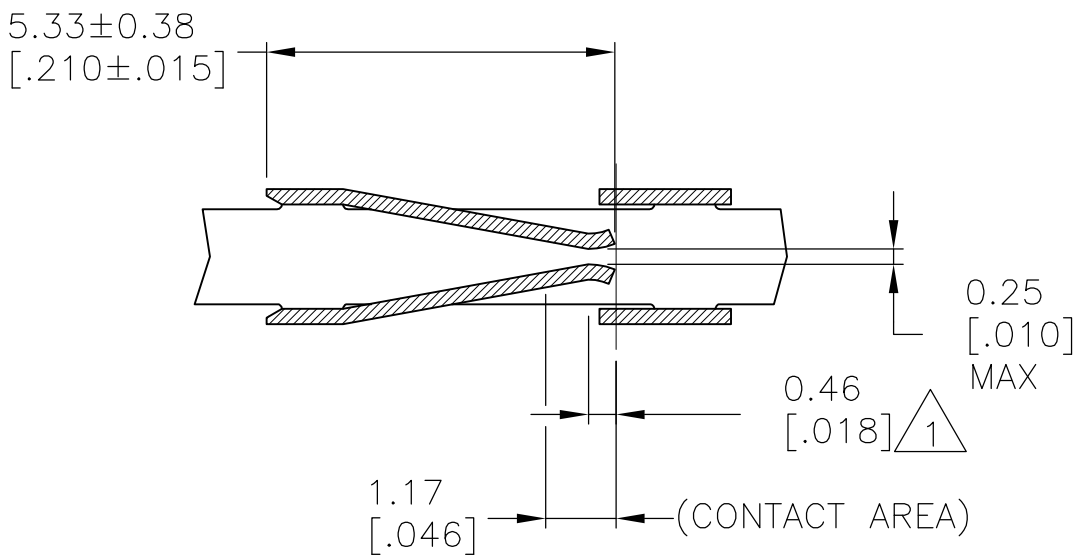
Address: A1208, Overseas Decoration Building, #122 Zhenhua RD., Futian, Shenzhen, China



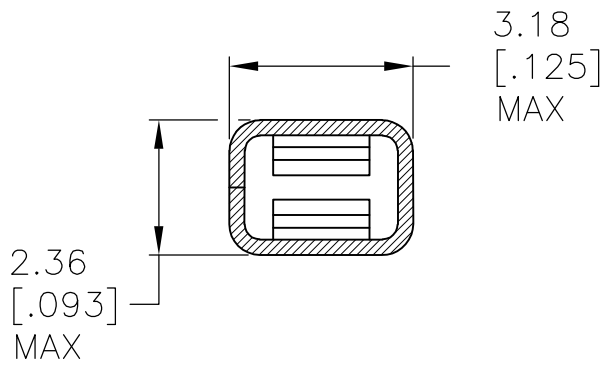
LOC	DIST	REVISIONS					
		P	LTR	DESCRIPTION	DATE	DWN	APVD
AD	OO		A1	ECO-07-014163	08JAN08	MB	NE



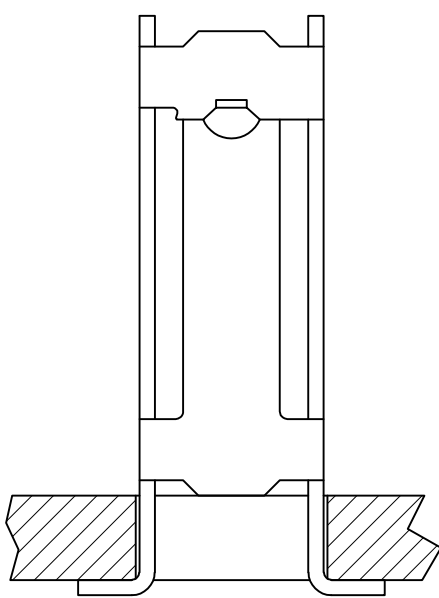
RECOMMENDED P.C.BOARD LAYOUT



SECTION A-A



SECTION B-B



TYPICAL APPLICATION

- 1 POINT OF MEASUREMENT FOR PLATING THICKNESS (INSIDE BEAMS).
- 3 "H" RECEPTACLE CENTERS MAY VARY DEPENDING ON REQUIREMENTS. MINIMUM NOMINAL CENTER SPACING BETWEEN ADJACENT RECEPTACLES IS 3.81 ± 0.08 [.150 ± .003]
- 4 GOLD FLASH OVER 0.00127 [.000050] NICKEL ENTIRE TERMINAL, 0.00038 [.000015] GOLD ON CONTACT AREA ONLY.
- 5 GOLD FLASH OVER 0.00127 [.000050] NICKEL ENTIRE TERMINAL, 0.00076 [.000030] GOLD ON CONTACT AREA ONLY.
- 6 0.00127 [.000050] GOLD OVER 0.00127 [.000050] NICKEL ENTIRE TERMINAL.
- 7 0.00076 [.000030] GOLD OVER 0.00127 [.000050] NICKEL ENTIRE TERMINAL.
- 8 0.00038 [.000015] GOLD ON CONTACT AREA, $0.00254 - 0.00508$ [.000100 - .000200] BRIGHT TIN-LEAD ON TERMINATION AREA, ALL OVER 0.00127 [.000050] NICKEL ENTIRE TERMINAL.
- 9 0.00076 [.000030] GOLD ON CONTACT AREA, $0.00254 - 0.00508$ [.000100 - .000200] BRIGHT TIN-LEAD ON TERMINATION AREA, ALL OVER 0.00127 [.000050] NICKEL ENTIRE TERMINAL.
- 10 0.00200 [.000079] MIN TIN.

	MINIATURE	1-86477-1	10	-
OBSOLETE	MINIATURE	1-86477-0	9	86480-7
OBSOLETE	MINIATURE	86477-9	8	86480-6
	MINIATURE	86477-8	7	86480-5
	-	-	-	-
OBSOLETE	MINIATURE	86477-6	6	86480-4
	-	-	-	-
	-	-	-	-
	MINIATURE	86477-3	10	86480-3
	MINIATURE	86477-2	5	86480-2
OBSOLETE	MINIATURE	86477-1	4	86480-1
	REELED FOR APPLICATOR	STRIP PART NUMBER	FINISH	PART NO

THIS DRAWING IS A CONTROLLED DOCUMENT.		DWN E.BRANDBERG 28DEC96	Tyco Electronics Corporation Harrisburg, Pa 17105-3608	
DIMENSIONS: mm [INCHES]		CHK J. HERRINGTON 28DEC96		
	TOLERANCES UNLESS OTHERWISE SPECIFIED:		NAME	
	0 PLC ± -		RECEPTACLE, MOD I	
	1 PLC ± -		STANDARD PRESSURE, TYPE A	
	2 PLC ± -		-	
	3 PLC ± 0.13 [.005]		-	
	4 PLC ± -		-	
MATERIAL PHOS BRONZE	FINISH		SIZE	
	SEE TABLE		A2	
			CAGE CODE	
		WEIGHT	-	DRAWING NO
		CUSTOMER DRAWING		RESTRICTED TO
		SCALE		REV
		8:1		A1
		SHEET		OF
		1		1