



Chipsmall Limited consists of a professional team with an average of over 10 year of expertise in the distribution of electronic components. Based in Hongkong, we have already established firm and mutual-benefit business relationships with customers from,Europe,America and south Asia,supplying obsolete and hard-to-find components to meet their specific needs.

With the principle of “Quality Parts,Customers Priority,Honest Operation,and Considerate Service”,our business mainly focus on the distribution of electronic components. Line cards we deal with include Microchip,ALPS,ROHM,Xilinx,Pulse,ON,Everlight and Freescale. Main products comprise IC,Modules,Potentiometer,IC Socket,Relay,Connector.Our parts cover such applications as commercial,industrial, and automotives areas.

We are looking forward to setting up business relationship with you and hope to provide you with the best service and solution. Let us make a better world for our industry!



## Contact us

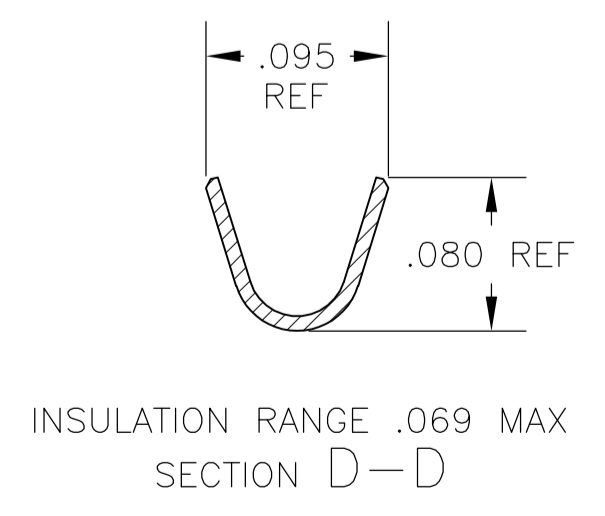
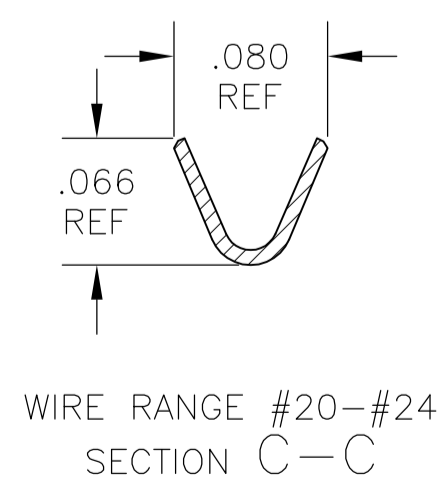
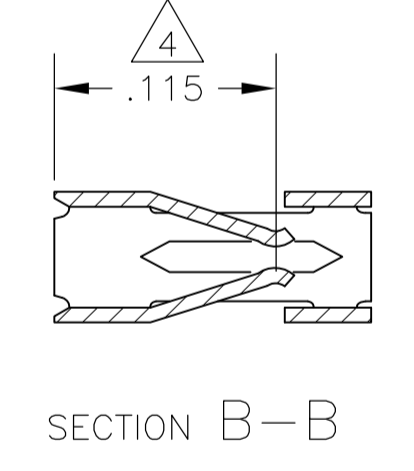
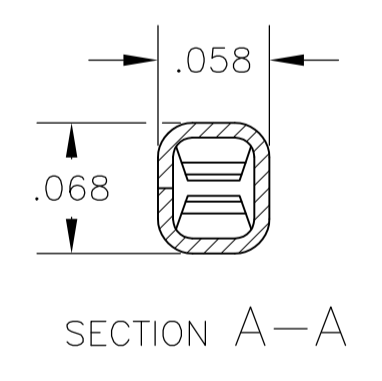
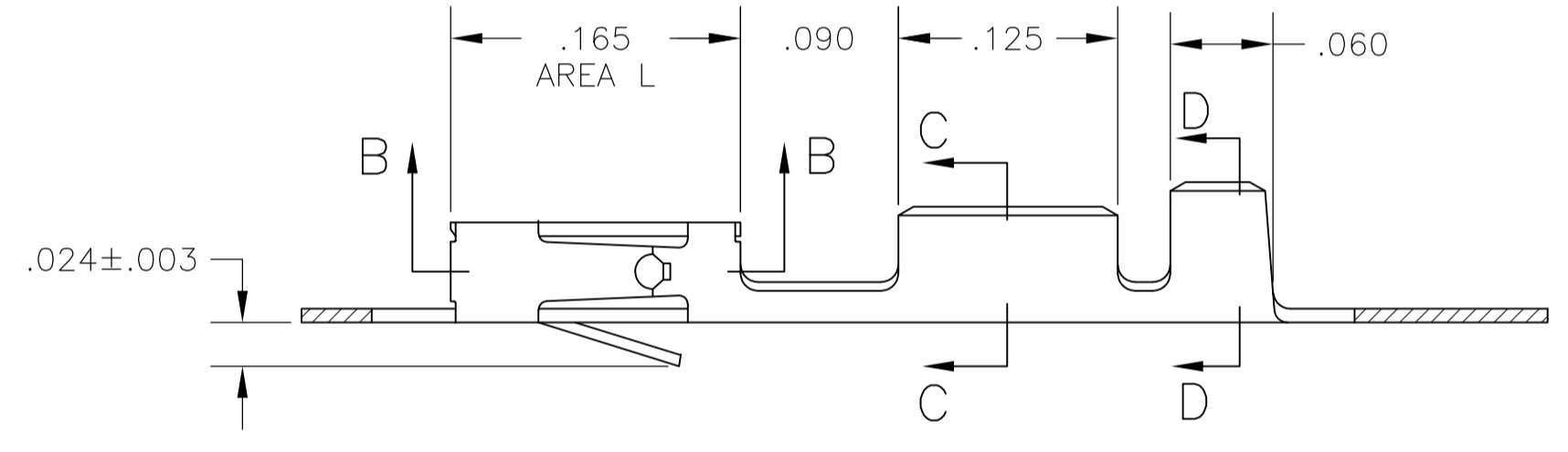
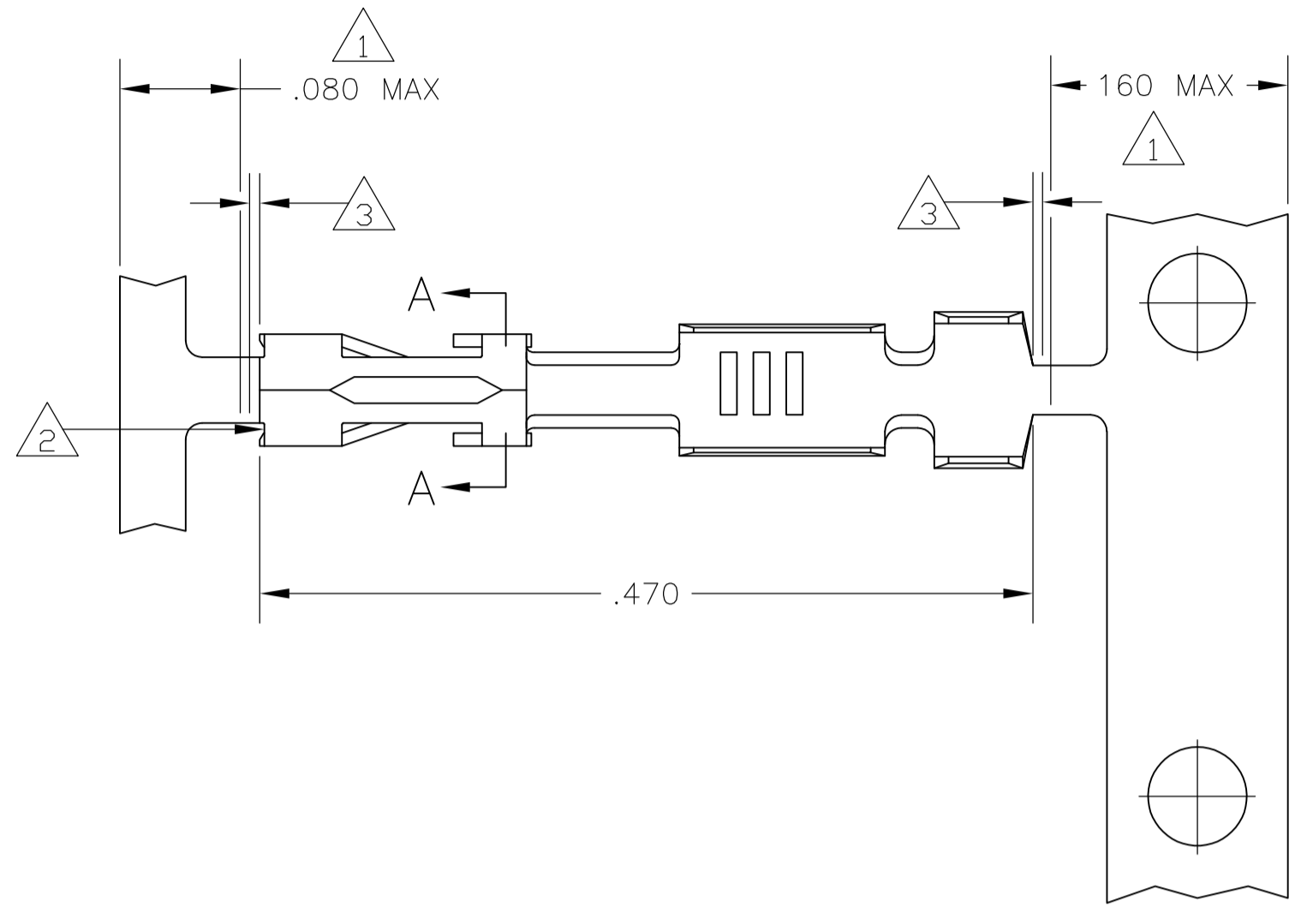
Tel: +86-755-8981 8866 Fax: +86-755-8427 6832

Email & Skype: info@chipsmall.com Web: www.chipsmall.com

Address: A1208, Overseas Decoration Building, #122 Zhenhua RD., Futian, Shenzhen, China



- 1 PLATING IS NOT REQUIRED IN THIS AREA
- 2 CUT-OUTS ON BOX AT MANUFACTURER'S OPTION
- 3 .006 MAX LOOSE PIECE CUT-OFF
- 4 POINT OF MEASUREMENT FOR PLATING THICKNESS (INSIDE BEAMS)
- 5 .000015 GOLD IN CONTACT AREA, GOLD FLASH ON REMAINDER OF TERMINAL, ALL OVER .000050 NICKEL
- 6 .000030 GOLD OVER .000050 NICKEL
- 7 .000030 GOLD IN CONTACT AREA, GOLD FLASH ON REMAINDER OF TERMINAL, ALL OVER .000050 NICKEL
- 8 PREPLATED: .000078-.000158 BRIGHT TIN.
- 9 .000030 GOLD IN CONTACT AREA, GOLD FLASH IN AREA L, ALL OVER .000050 NICKEL
- 10 .000050 GOLD IN CONTACT AREA, GOLD FLASH ON REMAINDER OF TERMINAL, ALL OVER .000050 NICKEL
- 11 SHEARED EDGES PERMITTED TO BE UNPLATED
- 12 OBSOLETE PART NUMBER.
- 13 OBSOLETE PARTS: OBSOLETE CIS STREAMLINING PER D.RENAUD/D.SINISI



13 OBSOLETE	12 -6	1-	12 -7	10	1- 86492 -8
	12 -5	1-	12 -4	9	1- -3
	87046 -4		12 -8	8	-9
		-3	12 -5	7	-6
	-2	12 -3	6	-4	
87046 -1		12 -1	5	86492 -2	
LOOSE PIECE		STANDARD APPLICATOR	FINISH	MINI APPLICATOR	
PART NUMBER		PART NUMBER		PART NUMBER	

THIS DRAWING IS A CONTROLLED DOCUMENT.		DIN L A MAYER 20MAY85	<b>STE</b> TE Connectivity				
DIMENSIONS: INCHES		CHK R J DAVIS 07JUN85					
TOLERANCES UNLESS OTHERWISE SPECIFIED:		APVD C LINDGREN 14JUN85	NAME CONTACT, MOD IV 1/2, RECEPTACLE, CRIMP SNAP-IN				
0 PLC ± -	1 PLC ± -	PRODUCT SPEC	SIZE	CAGE CODE	DRAWING NO	RESTRICTED TO	
2 PLC ± -	3 PLC ± .005	APPLICATION SPEC	A1	00779	86492		
4 PLC ± -	ANGLES ± -	FINISH	WEIGHT	CUSTOMER DRAWING	SCALE 10:1	SHEET 1 OF 1	REV K2