



Chipsmall Limited consists of a professional team with an average of over 10 year of expertise in the distribution of electronic components. Based in Hongkong, we have already established firm and mutual-benefit business relationships with customers from,Europe,America and south Asia,supplying obsolete and hard-to-find components to meet their specific needs.

With the principle of “Quality Parts,Customers Priority,Honest Operation,and Considerate Service”,our business mainly focus on the distribution of electronic components. Line cards we deal with include Microchip,ALPS,ROHM,Xilinx,Pulse,ON,Everlight and Freescale. Main products comprise IC,Modules,Potentiometer,IC Socket,Relay,Connector.Our parts cover such applications as commercial,industrial, and automotives areas.

We are looking forward to setting up business relationship with you and hope to provide you with the best service and solution. Let us make a better world for our industry!



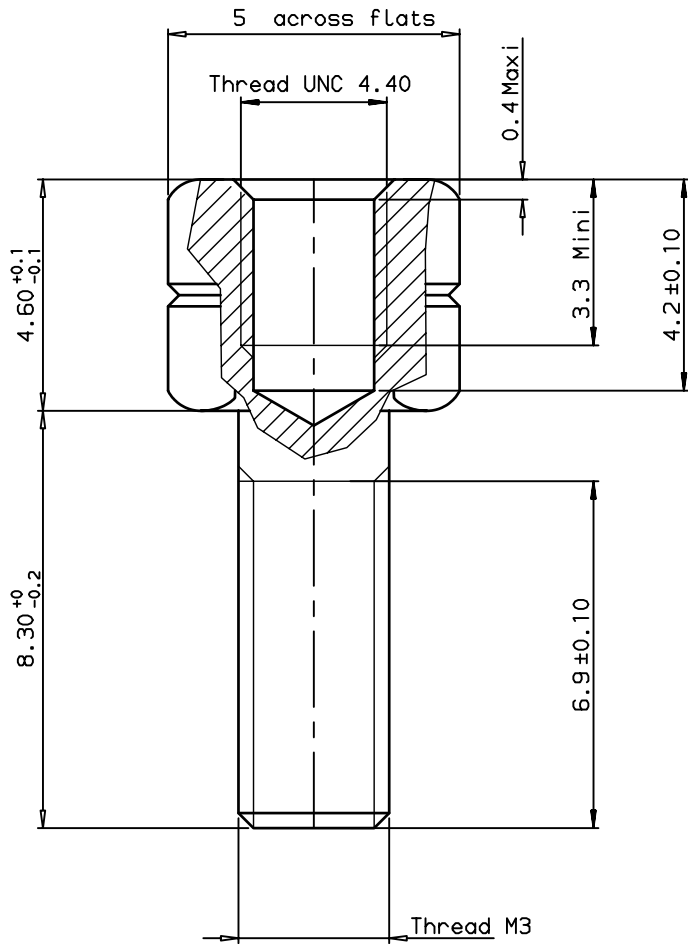
Contact us

Tel: +86-755-8981 8866 Fax: +86-755-8427 6832

Email & Skype: info@chipsmall.com Web: www.chipsmall.com

Address: A1208, Overseas Decoration Building, #122 Zhenhua RD., Futian, Shenzhen, China





TECHNICAL CHARACTERISTICS :

Female screw locks: brass
 Packaging : per 1000 pieces .

86551007TLF	NOTE 1
LEAD FREE PART NUMBER	RoHS NOTE

NOTE 1 : RoHS INFORMATIONS

- The "LF" product meets European union Directives and other country regulations as described in 65-22-008.
- The product is not intended to be exposed to a manufacturing solder process.
- Plating: Sn pure bright over Copper.
- Packaging spec: see 65-14-920.

European Views

www.fciconnect.com		surface ISO 1302 ✓	tolerance std ISO 406 ISO 1101	projection 	mm
TOLERANCES UNLESS OTHERWISE SPECIFIED					
Dr	GOISNARD	2006/01/12	ANGULAR	0.X ±0.1	size A3 Scale 10
Eng	PESSON	2006/01/12	LINEAR	0.XX ±0.1	
Chr	LEGARE	2006/01/12	0.XX ±2'	0.XXX ±0.1	ECN LS09-0006
Appr	LEGARE	2006/01/12	Product family	D-SUB	Spec ref -
		title FEMALE SCREW LOCKS			dwg no C01-8655-1658
		D SUB ACCESSORIES			Rev. C
		catalog no -			CUSTOMER sheet 1 of 1

rev	ecn no	dr	date
A	LS05-0123	LGO	2006/01/12
B	LS06-0095	LGO	2006/06/24
C	LS09-0006	PCR	2009/01/08
-	-	-	-
-	-	-	-
-	-	-	-
-	-	-	-

Copyright FCJ, FCj