



Chipsmall Limited consists of a professional team with an average of over 10 year of expertise in the distribution of electronic components. Based in Hongkong, we have already established firm and mutual-benefit business relationships with customers from,Europe,America and south Asia,supplying obsolete and hard-to-find components to meet their specific needs.

With the principle of "Quality Parts,Customers Priority,Honest Operation,and Considerate Service",our business mainly focus on the distribution of electronic components. Line cards we deal with include Microchip,ALPS,ROHM,Xilinx,Pulse,ON,Everlight and Freescale. Main products comprise IC,Modules,Potentiometer,IC Socket,Relay,Connector.Our parts cover such applications as commercial,industrial, and automotives areas.

We are looking forward to setting up business relationship with you and hope to provide you with the best service and solution. Let us make a better world for our industry!



## Contact us

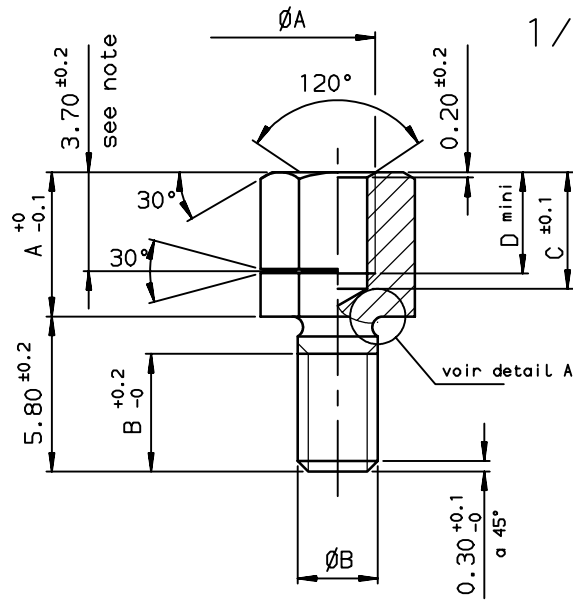
Tel: +86-755-8981 8866 Fax: +86-755-8427 6832

Email & Skype: info@chipsmall.com Web: www.chipsmall.com

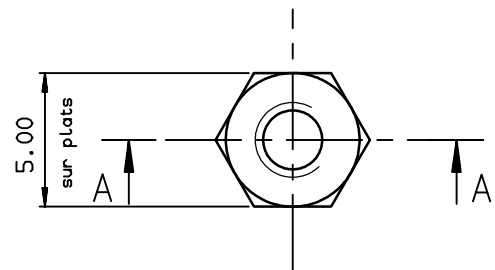
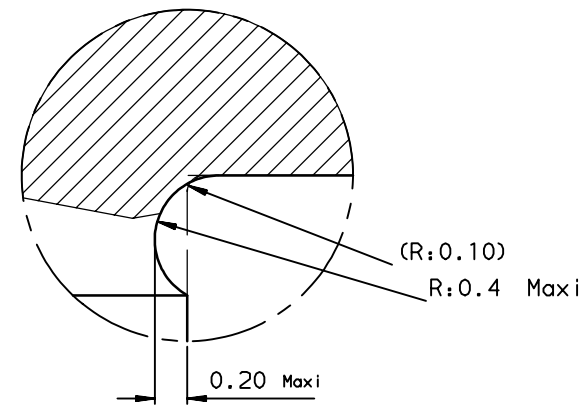
Address: A1208, Overseas Decoration Building, #122 Zhenhua RD., Futian, Shenzhen, China



# 1/2 COUPE AA



Detail A (ech:30)



### NOTES:

- Depth groove: 0.3mm use with 8655-1321 only which defined M3 thread inner.
- Packaging: per 1000
- Material: stainless steel
- 1 :Dimension controle with screw
- 2 :Dimension controle with caliber

86551321LF	Female screw locks	5.4	4.2	5.0	3.9 Note 2	4.2 Note 1	M3	M3
86551315LF	Female screw locks	5.4	4.2	5.0	3.7 Note 2	4.1 Note 1	4.40UNC-2B	M3
86551316LF	Female screw locks	6.4	4.8	5.8	4.3		4.40UNC-2B	M3
Part number	Designations	A	B	C	D		$\phi A$	$\phi B$

**NOTE:RoHS INFORMATIONS**

- These products meet European union Directives and other country regulations as described in G5-22-008. (RoHS Compliant products)
- Packaging spec: see G5-14-920

rev	ecn no	dr	date
A	LS06-0019	LGO	2006/03/06
B	LS06-0097	LGO	2006/07/28
-	-	-	-
-	-	-	-
-	-	-	-
-	-	-	-

www.fciconnect.com		surface ISO 1302 <input checked="" type="checkbox"/>	tolerance std ISO 406 ISO 1101	projection 	mm
TOLERANCES UNLESS OTHERWISE SPECIFIED					
Dr	GOISNARD	2006/03/06	ANGULAR	0.X $\pm 0.1$	size A3
Eng	PESSON	2006/03/06	LINEAR	0.XX $\pm 0.1$	Scale 5
Chr	LEGARE	2006/03/06	0.XX' $\pm 2'$	0.XXX $\pm 0.1$	ECN LS06-0097
Appr	LEGARE	2006/03/06	Product family	D-SUB	Spec ref -
		title FEMALE SCREW LOCKS		dwg no C01-8655-1604	Rev. B
catalog no		-		CUSTOMER	sheet 1 of 1

European Views

Copyright FCI.