



Chipsmall Limited consists of a professional team with an average of over 10 year of expertise in the distribution of electronic components. Based in Hongkong, we have already established firm and mutual-benefit business relationships with customers from,Europe,America and south Asia,supplying obsolete and hard-to-find components to meet their specific needs.

With the principle of “Quality Parts,Customers Priority,Honest Operation,and Considerate Service”,our business mainly focus on the distribution of electronic components. Line cards we deal with include Microchip,ALPS,ROHM,Xilinx,Pulse,ON,Everlight and Freescale. Main products comprise IC,Modules,Potentiometer,IC Socket,Relay,Connector.Our parts cover such applications as commercial,industrial, and automotives areas.

We are looking forward to setting up business relationship with you and hope to provide you with the best service and solution. Let us make a better world for our industry!



Contact us

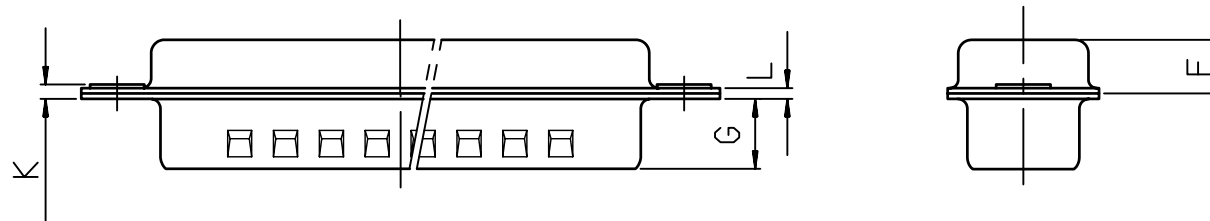
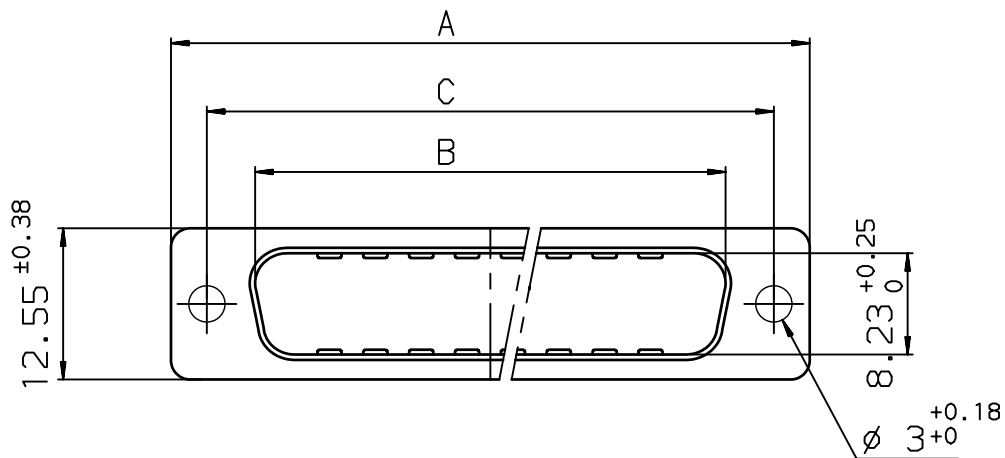
Tel: +86-755-8981 8866 Fax: +86-755-8427 6832

Email & Skype: info@chipsmall.com Web: www.chipsmall.com

Address: A1208, Overseas Decoration Building, #122 Zhenhua RD., Futian, Shenzhen, China



NOTE
Sealed caps IP 65 .



Shell size	Number of contacts	A ^{+0.76} ₀	B ^{+0.25} ₀	C ±0.12	F ^{+0.13} _{-0.03}	G	K	L ^{+0.22} ₀	Part number
E	09	30.43	16.79	24.99	4.36	5.90 ^{+0.15} ₀	1.00 ^{+0.30} ₀	0.80	86553138TLF
A	15	38.76	25.12	33.32	4.36	5.90 ^{+0.15} ₀	1.00 ^{+0.30} ₀	0.80	86553139TLF
B	25	52.65	38.84	47.04	4.36	5.70 ^{+0.25} ₀	1.00 ^{+0.30} ₀	0.80	86553140TLF
C	37	68.94	55.30	63.50	4.36	5.70 ^{+0.25} ₀	1.27 ^{+0.30} ₀	1.00	86553141TLF

European Views

NOTE: RoHS INFORMATIONS

- The "LF" product meets European union Directives and other country regulations as described in 65-22-008.
- The product is not intended to be exposed to a manufacturing solder process.
- Plating: Sn pure bright over Copper.
- Packaging spec: see 65-14-920.

rev	ecn no	dr	date
A	LS05-0123	L60	2006/01/12
B	LS06-0095	L60	2006/06/23
C	LS09-0006	PCR	2009/01/08
-	-	-	-
-	-	-	-
-	-	-	-
-	-	-	-

www.fciconnect.com		surface ISO 1302 ✓	tolerance std ISO 406 ISO 1101	projection ⊕	mm
TOLERANCES UNLESS OTHERWISE SPECIFIED					
ANGULAR	LINEAR	0.X	±0.1	size A3	Scale 3
Chr	LEGARE	0.XX	±0.1	ECN	LS09-0006
Appr	LEGARE	0.XXX	±0.1	Product family	D-SUB
				Spec ref	-
				title PINS METAL CAPS	Rev. C
				D SUB ACCESSORIES	dwg no C01-8655-1632
				catalog no	CUSTOMER sheet 1 of 1