



Chipsmall Limited consists of a professional team with an average of over 10 year of expertise in the distribution of electronic components. Based in Hongkong, we have already established firm and mutual-benefit business relationships with customers from,Europe,America and south Asia,supplying obsolete and hard-to-find components to meet their specific needs.

With the principle of "Quality Parts,Customers Priority,Honest Operation,and Considerate Service",our business mainly focus on the distribution of electronic components. Line cards we deal with include Microchip,ALPS,ROHM,Xilinx,Pulse,ON,Everlight and Freescale. Main products comprise IC,Modules,Potentiometer,IC Socket,Relay,Connector.Our parts cover such applications as commercial,industrial, and automotives areas.

We are looking forward to setting up business relationship with you and hope to provide you with the best service and solution. Let us make a better world for our industry!



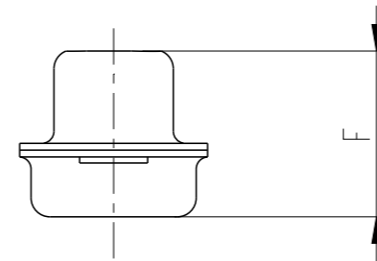
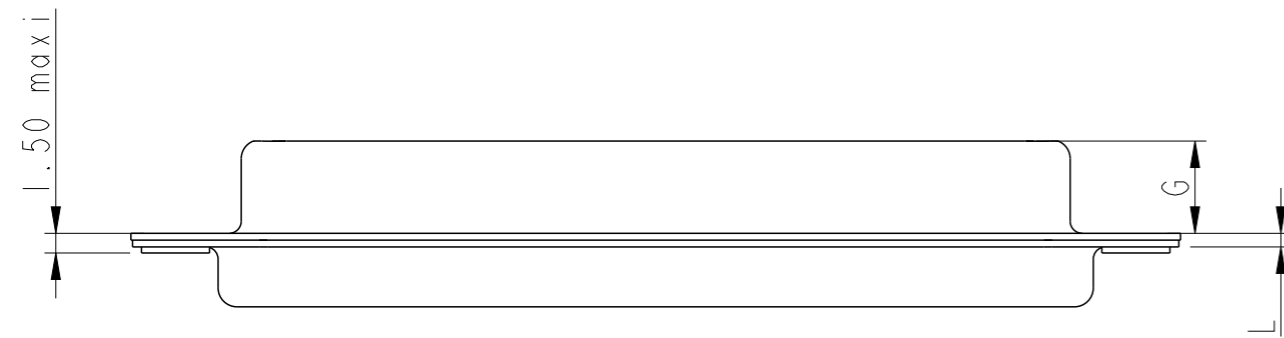
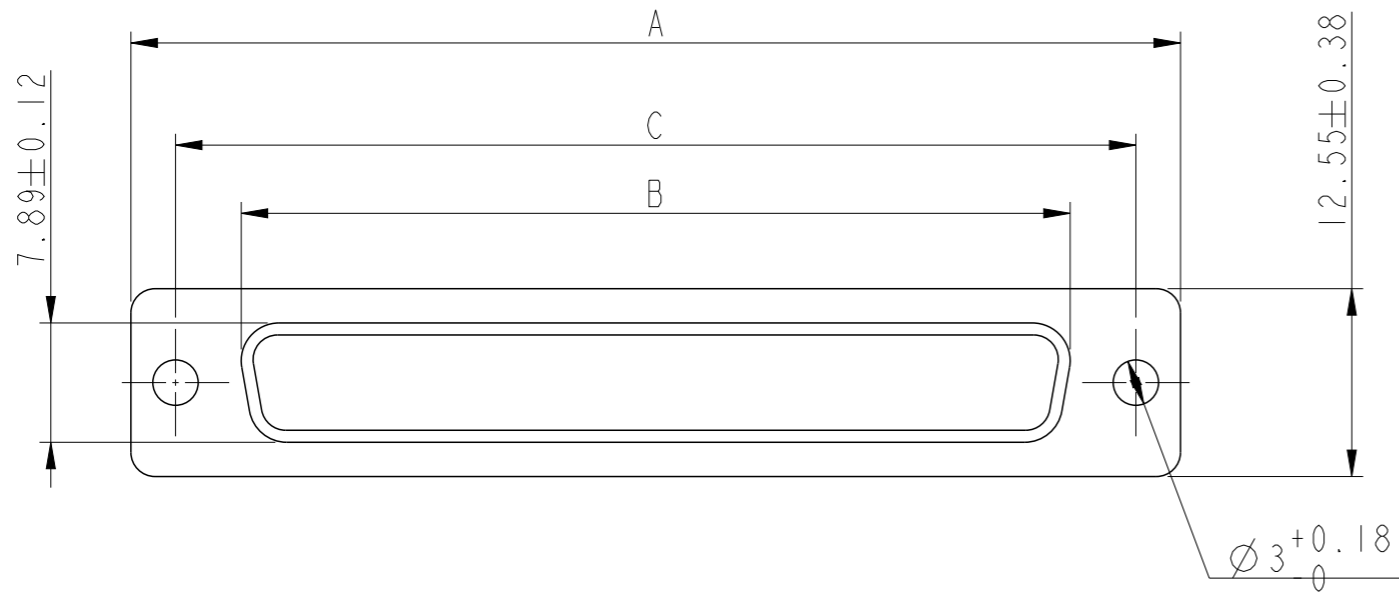
## Contact us

Tel: +86-755-8981 8866 Fax: +86-755-8427 6832

Email & Skype: info@chipsmall.com Web: www.chipsmall.com

Address: A1208, Overseas Decoration Building, #122 Zhenhua RD., Futian, Shenzhen, China





Shell size	A <sup>+0.76</sup> <sub>0</sub>	B <sup>+0.25</sup> <sub>0</sub>	C $\pm 0.12$	F $\pm 0.12$	G <sup>+0.25</sup> <sub>0</sub>	L <sup>+0.22</sup> <sub>0</sub>	Part Number
E	30.43	16.21	24.99	10.96	6.05	0.80	86553148TLF
A	38.76	24.54	33.32	10.96	6.05	0.80	86553149TLF
B	52.65	38.25	47.04	10.96	6.05	0.80	86553150TLF
C	68.94	54.71	63.50	10.96	6.05	0.80	86553151TLF

NOTES

- RoHS INFO : The product meets the european directives and others countries regulations as described on the GS-47-0004
- The product isn't intended to be exposed to a manufacturing solder process
- Plating : Sn pure bright over copper
- Packaging spec : see GS-14-920

spec ref	-	dr	A Parrenin	2013/04/04	projection	mm	size	A3	scale	2:1
tolerance std	ISO 406 ISO 1101	eng	A Parrenin	2013/05/16			ecn no	ELX-B-14776-1		
TOLERANCES UNLESS OTHERWISE SPECIFIED		chr	Laurent Mulin	2013/05/16			product family	D-Sub	rel level	Released
surface	<input checked="" type="checkbox"/> linear <input type="checkbox"/> angular	appr	Gert Drosbeke	2013/05/16			cat. no.	-	Product - Customer Drw	sheet 1 of 1
ISO 1302	0.X ±0.3 0.XX ±0.10 0.XXX ±0.05 0° ±2°	SOCKET METAL CAPS D SUB ACCESSORIES		www.fci.com	cat. no.	-	Product - Customer Drw	sheet 1 of 1	rev <b>D</b>	