



Chipsmall Limited consists of a professional team with an average of over 10 year of expertise in the distribution of electronic components. Based in Hongkong, we have already established firm and mutual-benefit business relationships with customers from,Europe,America and south Asia,supplying obsolete and hard-to-find components to meet their specific needs.

With the principle of “Quality Parts,Customers Priority,Honest Operation,and Considerate Service”,our business mainly focus on the distribution of electronic components. Line cards we deal with include Microchip,ALPS,ROHM,Xilinx,Pulse,ON,Everlight and Freescale. Main products comprise IC,Modules,Potentiometer,IC Socket,Relay,Connector.Our parts cover such applications as commercial,industrial, and automotives areas.

We are looking forward to setting up business relationship with you and hope to provide you with the best service and solution. Let us make a better world for our industry!



## Contact us

Tel: +86-755-8981 8866 Fax: +86-755-8427 6832

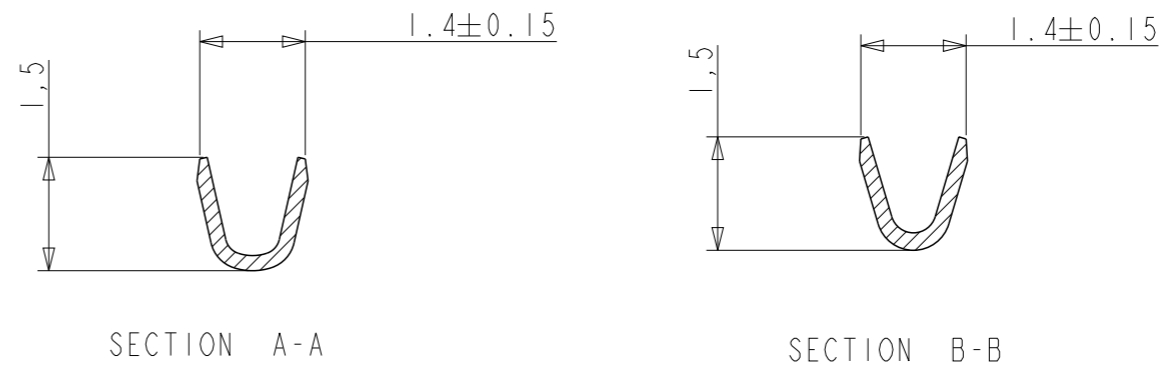
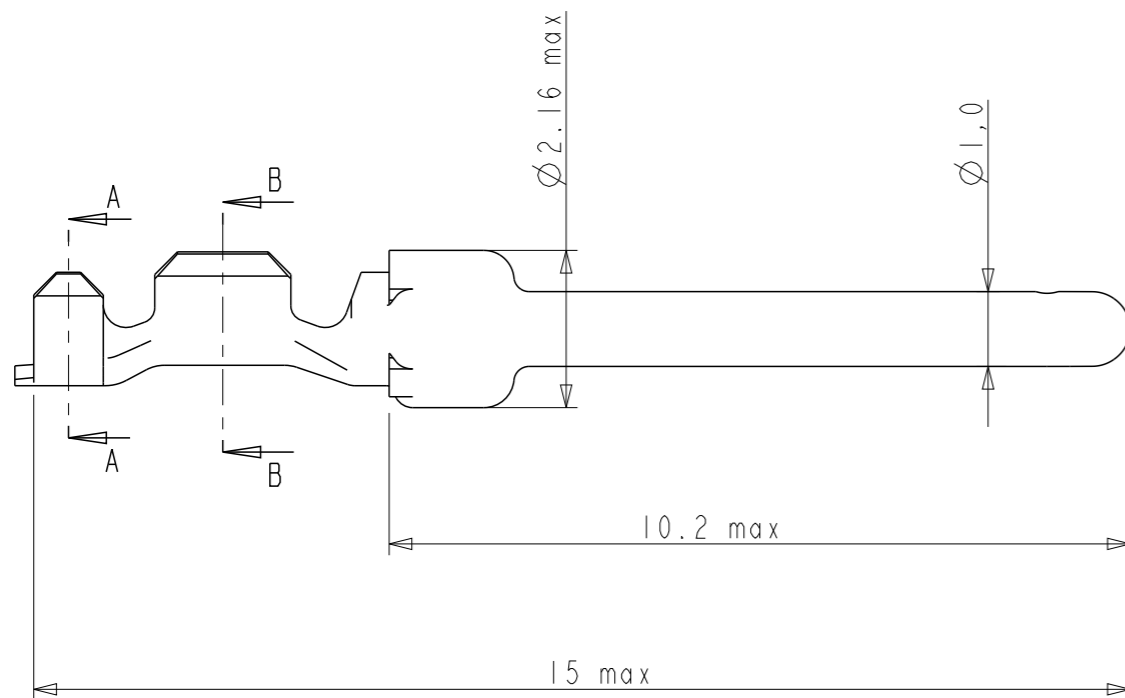
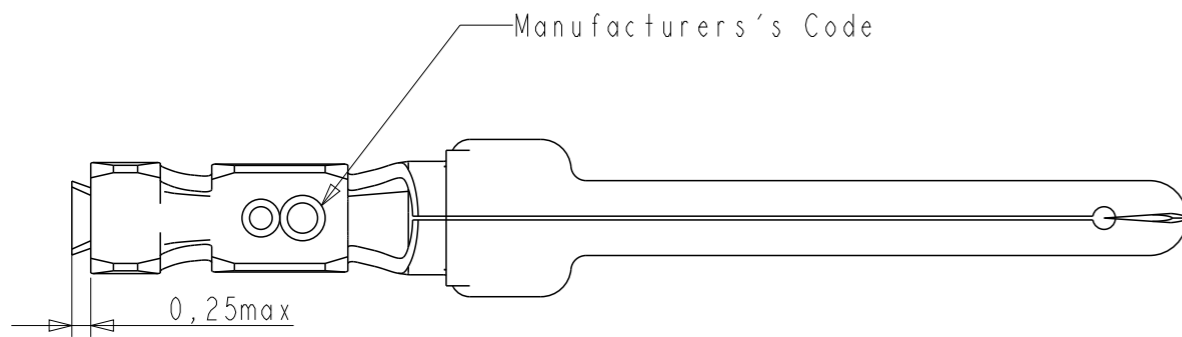
Email & Skype: info@chipsmall.com Web: www.chipsmall.com

Address: A1208, Overseas Decoration Building, #122 Zhenhua RD., Futian, Shenzhen, China



NOTES:  
 1-Material: Phosphor bronze, thickness 0.20  
 socket : Phosphor bronze  
 2-Finish on contact area: see table  
 finish on termination: bright tin over nickel  
 3-Wire range: 20 to 28 AW  
 4-Max outer dia of wire insulator:  
 -1.73 mm for contact #20-24  
 -1.02 mm for contact #24-28  
 5-Current carrying capacity per contact:  
 5 Amps max when crimped to #20 AWG  
 5 Amps max when crimped to #22 AWG  
 3 Amps max when crimped to #24 AWG  
 2 Amps max when crimped to #26 AWG  
 1 Amps max when crimped to #28 AWG  
 6-After 5 insertions into connector,  
 contact retention must be 5 pounds axial load min  
 7-When contact is crimped to 20 AWG, the insulation  
 support crimped height must be 1.78 mm max to ensure  
 a proper insertion into housing  
 6-Packaging: box of 500 contacts

PART NUMBER	Plating
8656350067LF	0.4μ Au / GXT
8656350067	0.4μ Au / GXT
8656350065LF	0.76μ Au / GXT
86563050065	0.76μ Au / GXT
8656350064LF	flash Au
8656350064	flash Au



CROSS SECTIONS FOR CT #24-28

NOTE : ROHS INFORMATIONS  
 The LF products meet European union directives and other country regulations as described in GS-22-008  
 Terminations plating spec : 2um Nickel min + 2um Sn min  
 Packaging Spec : see GS-14-920

www.fciconnect.com		surface - ✓ ISO 1302	tolerance std ISO 406 ISO 1101	projection mm
TOLERANCES UNLESS OTHERWISE SPECIFIED				
Dr	-	18/04/03	ANGULAR	0.X ±0.3
Eng	-	-	LINEAR	0.XX ±0.1
Chr	-	-	0° ±2°	0.XXX ±0.05
Appr	-	-	Product family	size A3
				ECN III-0003
				Spec ref -
FCi		CRIMP PIN	dwg no	Rev.
		#Wire 24-28 ∅1.02	C01-8656-1506	G
		catalog no	-	sheet 1 of 1

rev	ecn no	dr	date
C	LS06-196	MPE	27/11/2006
D	LS08-0127	MPE	2008/05/13
E	LS08-0167	MPE	2008/08/05
F	110-0070	AMR	2010-03-09
G	111-0003	AMR	2011-01-06
-	-	-	-
-	-	-	-