



Chipsmall Limited consists of a professional team with an average of over 10 year of expertise in the distribution of electronic components. Based in Hongkong, we have already established firm and mutual-benefit business relationships with customers from,Europe,America and south Asia,supplying obsolete and hard-to-find components to meet their specific needs.

With the principle of “Quality Parts,Customers Priority,Honest Operation,and Considerate Service”,our business mainly focus on the distribution of electronic components. Line cards we deal with include Microchip,ALPS,ROHM,Xilinx,Pulse,ON,Everlight and Freescale. Main products comprise IC,Modules,Potentiometer,IC Socket,Relay,Connector.Our parts cover such applications as commercial,industrial, and automotives areas.

We are looking forward to setting up business relationship with you and hope to provide you with the best service and solution. Let us make a better world for our industry!



## Contact us

Tel: +86-755-8981 8866 Fax: +86-755-8427 6832

Email & Skype: info@chipsmall.com Web: www.chipsmall.com

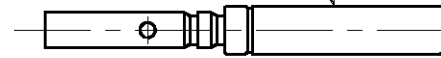
Address: A1208, Overseas Decoration Building, #122 Zhenhua RD., Futian, Shenzhen, China



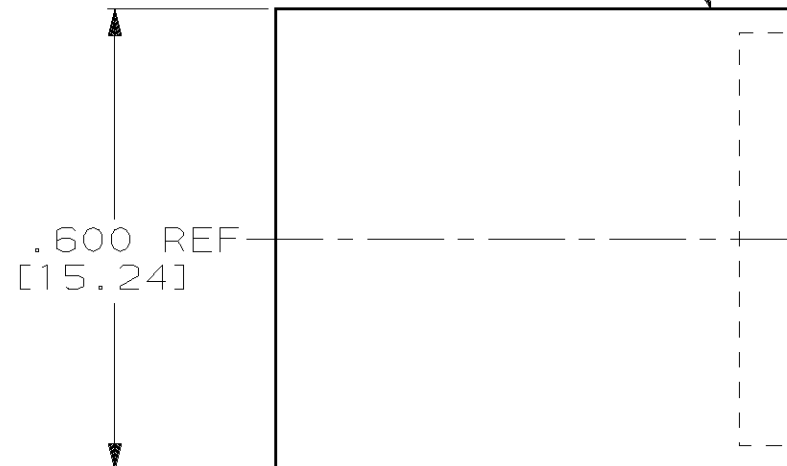
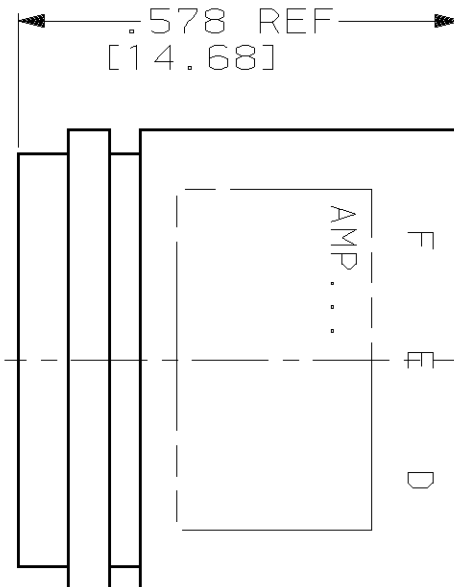
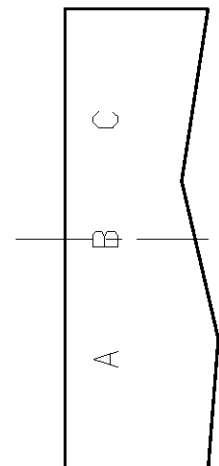
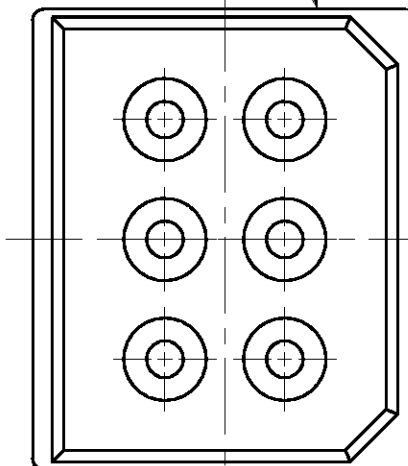
THIS DRAWING IS UNPUBLISHED. RELEASED FOR PUBLICATION, 19  
 © COPYRIGHT 19 BY AMP INCORPORATED. ALL INTERNATIONAL RIGHTS RESERVED.

LOC	DIST	P	F	ZONE	LTR	DESCRIPTION	DATE	APPD
DF	SO				B	PER EC 0G3D-0441-01 DBK	04/02	DE

SOCKET (QTY=6)  
-1 ONLY



RECEPTACLE HOUSING



.600 REF  
[15.24]

.625 REF  
[15.88]

.578 REF  
[14.68]

.600 REF  
[15.24]

.500 REF  
[12.70]

.500 REF  
[12.70]

2	867483-2
-	867483-1
REMARKS	PART NO.

- SEE 862091-1 FOR ASSEMBLY INSTRUCTIONS.
- 867483-2 DOES NOT INCLUDE SOCKET CONTACTS OR ASSEMBLY INSTRUCTIONS.
- MARKED PER MIL-STD-130.

THIS DRAWING IS A CONTROLLED DOCUMENT FOR AMP INCORPORATED. IT IS SUBJECT TO CHANGE AND THE CONTROLLING ENGINEERING ORGANIZATION SHOULD BE CONTACTED FOR THE LATEST REVISION.

DO NOT SCALE PRINT. UNLESS SPECIFIED DIMENSIONS IN INCHES [mm]	DR 5-18-93 C.C.THOMAS
TOLERANCES ON:	CHK 5-18-93 D.EABY
2 PLC DEC ± -	APPD 5-18-93 D.EABY
3 PLC DEC ± -	APPD 5-18-93 C.C.THOMAS
ANGLES ± -	PRODUCT SPEC
MATERIAL -	-
FINISH -	APPLICATION SPEC
	WEIGHT -

**AMP** AMP Incorporated  
Harrisburg, PA 17105-3608

NAME  
RCPT KIT, 6 POSN SUBMINIATURE, LGH

SIZE	CAGE CODE	DRAWING NO
B	00779	C=867483
SCALE	SHEET	
4:1	1 OF 1	