



Chipsmall Limited consists of a professional team with an average of over 10 year of expertise in the distribution of electronic components. Based in Hongkong, we have already established firm and mutual-benefit business relationships with customers from,Europe,America and south Asia,supplying obsolete and hard-to-find components to meet their specific needs.

With the principle of “Quality Parts,Customers Priority,Honest Operation,and Considerate Service”,our business mainly focus on the distribution of electronic components. Line cards we deal with include Microchip,ALPS,ROHM,Xilinx,Pulse,ON,Everlight and Freescale. Main products comprise IC,Modules,Potentiometer,IC Socket,Relay,Connector.Our parts cover such applications as commercial,industrial, and automotives areas.

We are looking forward to setting up business relationship with you and hope to provide you with the best service and solution. Let us make a better world for our industry!



Contact us

Tel: +86-755-8981 8866 Fax: +86-755-8427 6832

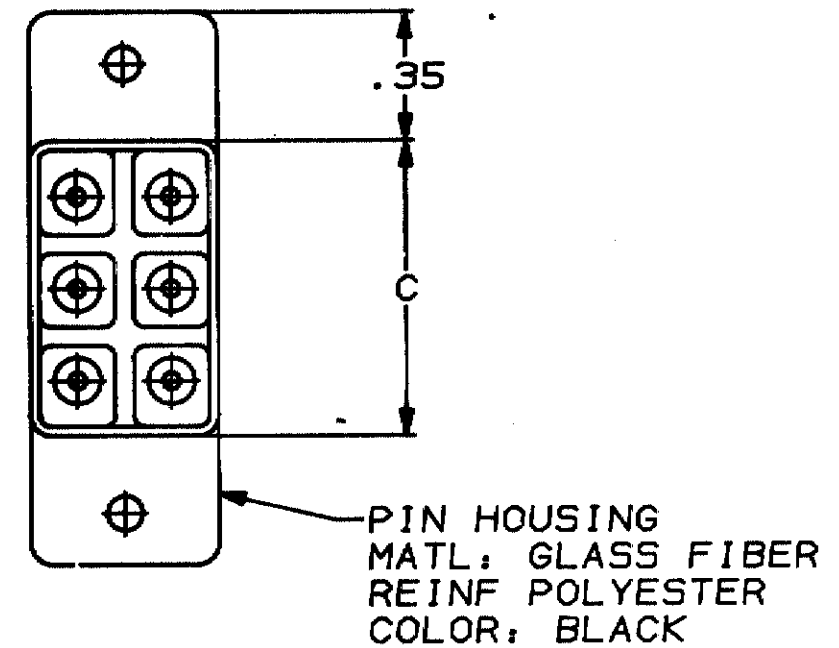
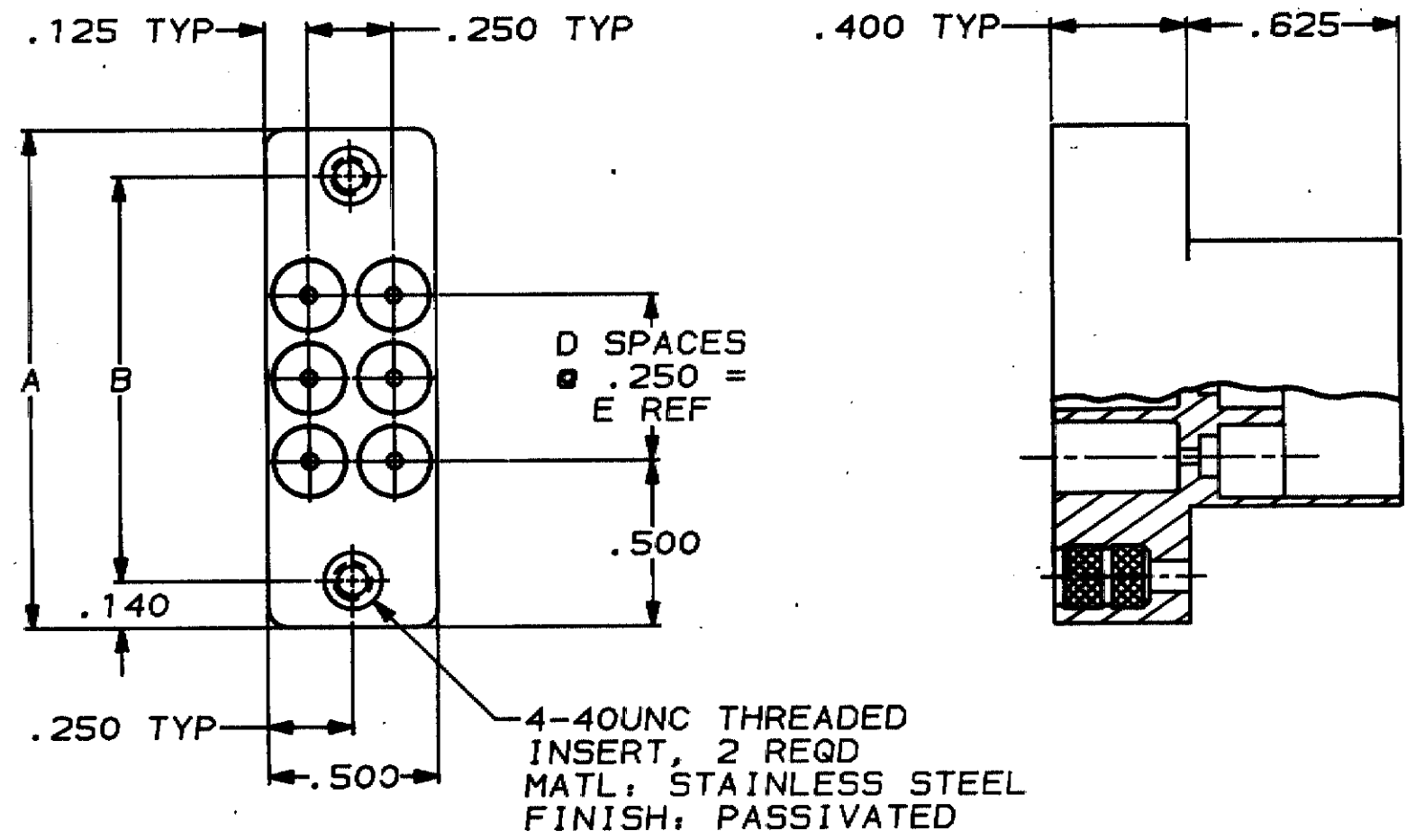
Email & Skype: info@chipsmall.com Web: www.chipsmall.com

Address: A1208, Overseas Decoration Building, #122 Zhenhua RD., Futian, Shenzhen, China



THIS DRAWING IS UNPUBLISHED. RELEASED FOR PUBLICATION, 19...
 © COPYRIGHT 19... BY AMP INCORPORATED. ALL INTERNATIONAL RIGHTS RESERVED.

PROD	LOC	DIST	REVISIONS				
4090	DF	50	ZONE	LTR	DESCRIPTION	DATE	APPD
CODE				0	RELEASED PER W.O.9-071F	4-10-89	BY



.500	2	.80	1.219	1.500	6	867781-3
.250	1	.55	.969	1.250	4	867781-2
—	—	.30	.719	1.000	2	867781-1
E	D	C	B	A	NO OF POSN	PART NUMBER

DO NOT SCALE PRINT. UNLESS SPECIFIED DIMENSIONS IN INCHES TOLERANCES ON: 2 PLC DEC * .02 3 PLC DEC * .005 ANGLES * -	DR <i>Brent D. John 4-10-89</i> CHG <i>M. J. Gordon 4-10-89</i> APPR <i>M. J. Gordon 4-10-89</i> APPD <i>Wes Lutz 4-10-89</i>	AMP AMP INCORPORATED Harrisburg, Pa. 17105	
	MATERIAL SEE CALLOUTS	PRODUCT SPEC -	NAME PIN HOUSING, LGH
FINISH SEE CALLOUTS	APPLICATION SPEC -	SIZE B	FSCH NO 00779
WEIGHT -	SCALE 2:1	DRAWING NO 867781	SHEET 1 OF 1