



Chipsmall Limited consists of a professional team with an average of over 10 year of expertise in the distribution of electronic components. Based in Hongkong, we have already established firm and mutual-benefit business relationships with customers from,Europe,America and south Asia,supplying obsolete and hard-to-find components to meet their specific needs.

With the principle of “Quality Parts,Customers Priority,Honest Operation,and Considerate Service”,our business mainly focus on the distribution of electronic components. Line cards we deal with include Microchip,ALPS,ROHM,Xilinx,Pulse,ON,Everlight and Freescale. Main products comprise IC,Modules,Potentiometer,IC Socket,Relay,Connector.Our parts cover such applications as commercial,industrial, and automotives areas.

We are looking forward to setting up business relationship with you and hope to provide you with the best service and solution. Let us make a better world for our industry!



## Contact us

Tel: +86-755-8981 8866 Fax: +86-755-8427 6832

Email & Skype: info@chipsmall.com Web: www.chipsmall.com

Address: A1208, Overseas Decoration Building, #122 Zhenhua RD., Futian, Shenzhen, China



# Data Sheet

## Device Programmers Models 844USB, 866C, & 867C



Model 844USB



Model 866C



Model 867C

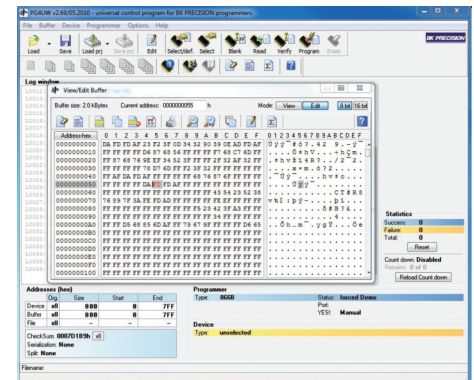
Universal device programmers are powerful, versatile, and simple to use. Our programmers are the ideal solution for programming new chips as well as copying chips for backup or repair purposes.

We offer on-going program software updates that extend device libraries and provide continuous improvements for the 844USB, 866C, and 867C programmers. Whether you are working with PLCC, SOIC, TSOP, DIP, TQFP, SSOP, PSOP or QFP packaging, we provide an extensive line of socket adapters that will work in conjunction with our programmers.

### Common Features & Benefits

- Extensive device libraries
- Fast and high performance
- Powerful program software
- Supports Windows® XP/Vista/7/8.1

Specifications	844USB	866C	867C
Devices Supported	EPROM, EEPROM/Flash, Serial EPROM, Microcontroller, PLD and Bi-Polar PROM (Bi-Polar PROMs 866C, & 867C)		
Device libraries	over 32,000	over 84,000	over 85,000
Interface	USB 2.0 / USB 1.1 Compatible		
Programming Socket	DIL40 pin ZIF Socket, ISP for in-circuit programming	DIL48 pin ZIF Socket, ISP for in-circuit programming	
Buffer Features	Erase, Random Data Fill, Fill Block, Copy Block, Move Block, Swap Block, Buffer Print, Find Text, Replace Text, GoTo Address, Checksum Calculator, 8 bit & 16 bit View Modes		
I.C. Tester	No	Yes	
Power Requirements	100-240 VAC, 47-63 Hz		
Weight	1.1 lbs (500 g)	1.98 lbs (0.9 kg)	
Dimensions (W x H x D)	3.8" x 1.4" x 6.3" (95 x 35 x 160 mm)	5.5" x 2.2" x 7.7" (140 x 56 x 195 mm)	
<b>One-Year Warranty</b>			



Programmer software

Windows® is a registered trademark of Microsoft Corporation in the United States and other countries.