



Chipsmall Limited consists of a professional team with an average of over 10 year of expertise in the distribution of electronic components. Based in Hongkong, we have already established firm and mutual-benefit business relationships with customers from,Europe,America and south Asia,supplying obsolete and hard-to-find components to meet their specific needs.

With the principle of "Quality Parts,Customers Priority,Honest Operation,and Considerate Service",our business mainly focus on the distribution of electronic components. Line cards we deal with include Microchip,ALPS,ROHM,Xilinx,Pulse,ON,Everlight and Freescale. Main products comprise IC,Modules,Potentiometer,IC Socket,Relay,Connector.Our parts cover such applications as commercial,industrial, and automotives areas.

We are looking forward to setting up business relationship with you and hope to provide you with the best service and solution. Let us make a better world for our industry!



## Contact us

Tel: +86-755-8981 8866 Fax: +86-755-8427 6832

Email & Skype: info@chipsmall.com Web: www.chipsmall.com

Address: A1208, Overseas Decoration Building, #122 Zhenhua RD., Futian, Shenzhen, China



DRAWING MADE IN THIRD ANGLE PROJECTION

3

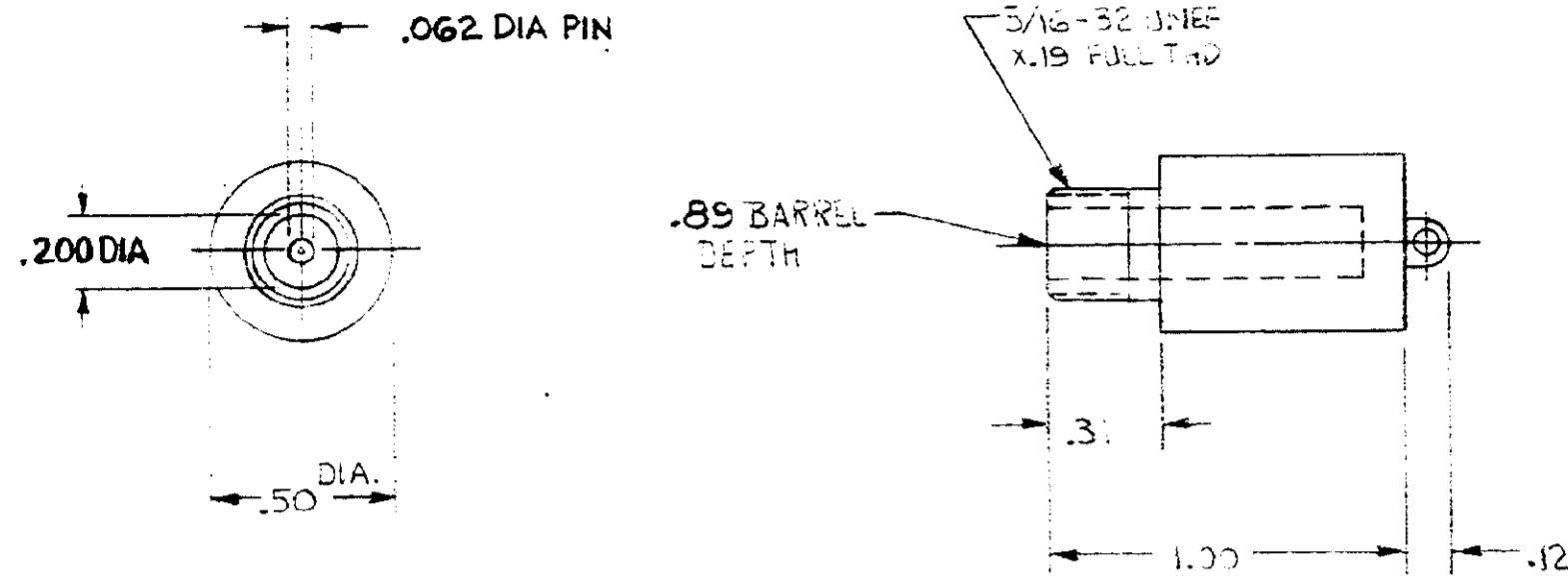
2

1

LOC	DIST
L	37

THIS DRAWING IS UNPUBLISHED. RELEASED FOR PUBLICATION . 19  
 © COPYRIGHT 19 BY AMP INCORPORATED, HARRISBURG, PA. ALL INTERNATIONAL RIGHTS RESERVED. AMP PRODUCTS MAY BE COVERED BY U.S. AND FOREIGN PATENTS AND/OR PATENTS PENDING.

REVISIONS						
P	F	ZONE	LTR	DESCRIPTION	DATE	APPROVED
			0	RELEASE. NPR 1401	RPH 4-3-85	SWL



- RECEPTACLE TO MATE WITH AMP LGH 1/2 L LEAD ASSEMBLY. AVAILABLE SEPARATELY.
- SPECIAL HANDLING REQUIREMENTS:  
 SPECIAL TESTING: PIN TO GND, 23KVDC @ SEA LEVEL ROOM TEMP, MAX LEAKAGE 10pa  
 100% TESTING.  
 TEST DATA SUPPLIED WITH EACH LOT.

868438-1

PART NO

UNLESS OTHERWISE SPECIFIED DIMENSIONS ARE IN INCHES. TOLERANCES ON: DECIMALS XX±.02 ANGLES XXX±.005	CONTRACT NO	<b>AMP</b>   AMP INCORPORATED Harrisburg, Pa. 17105	
	DR <i>R. B. Hapner 3-29-85</i>		
MATERIAL MOLDED GLASS EPOXY	CHK	DRAWING NO 868438	
FINISH BLACK	APPD <i>John W. Gaur 4-3-85</i>	SIZE C	FSCM NO 00779
	DSGN APPD	SCALE NTS	
	OTHER APPD	SHEET	