



Chipsmall Limited consists of a professional team with an average of over 10 year of expertise in the distribution of electronic components. Based in Hongkong, we have already established firm and mutual-benefit business relationships with customers from,Europe,America and south Asia,supplying obsolete and hard-to-find components to meet their specific needs.

With the principle of “Quality Parts,Customers Priority,Honest Operation,and Considerate Service”,our business mainly focus on the distribution of electronic components. Line cards we deal with include Microchip,ALPS,ROHM,Xilinx,Pulse,ON,Everlight and Freescale. Main products comprise IC,Modules,Potentiometer,IC Socket,Relay,Connector.Our parts cover such applications as commercial,industrial, and automotives areas.

We are looking forward to setting up business relationship with you and hope to provide you with the best service and solution. Let us make a better world for our industry!



Contact us

Tel: +86-755-8981 8866 Fax: +86-755-8427 6832

Email & Skype: info@chipsmall.com Web: www.chipsmall.com

Address: A1208, Overseas Decoration Building, #122 Zhenhua RD., Futian, Shenzhen, China



1

2

3

4

A

B

C

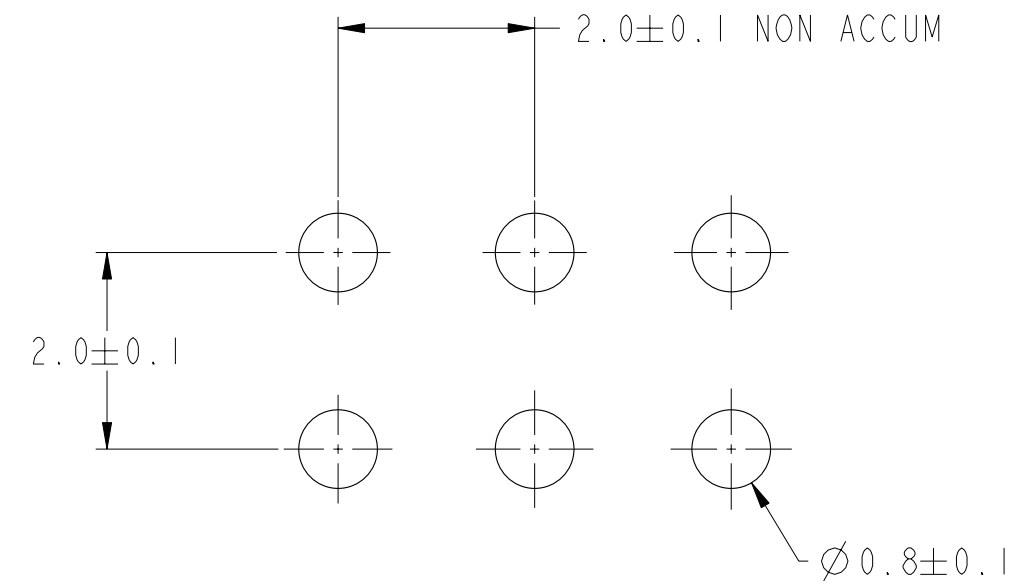
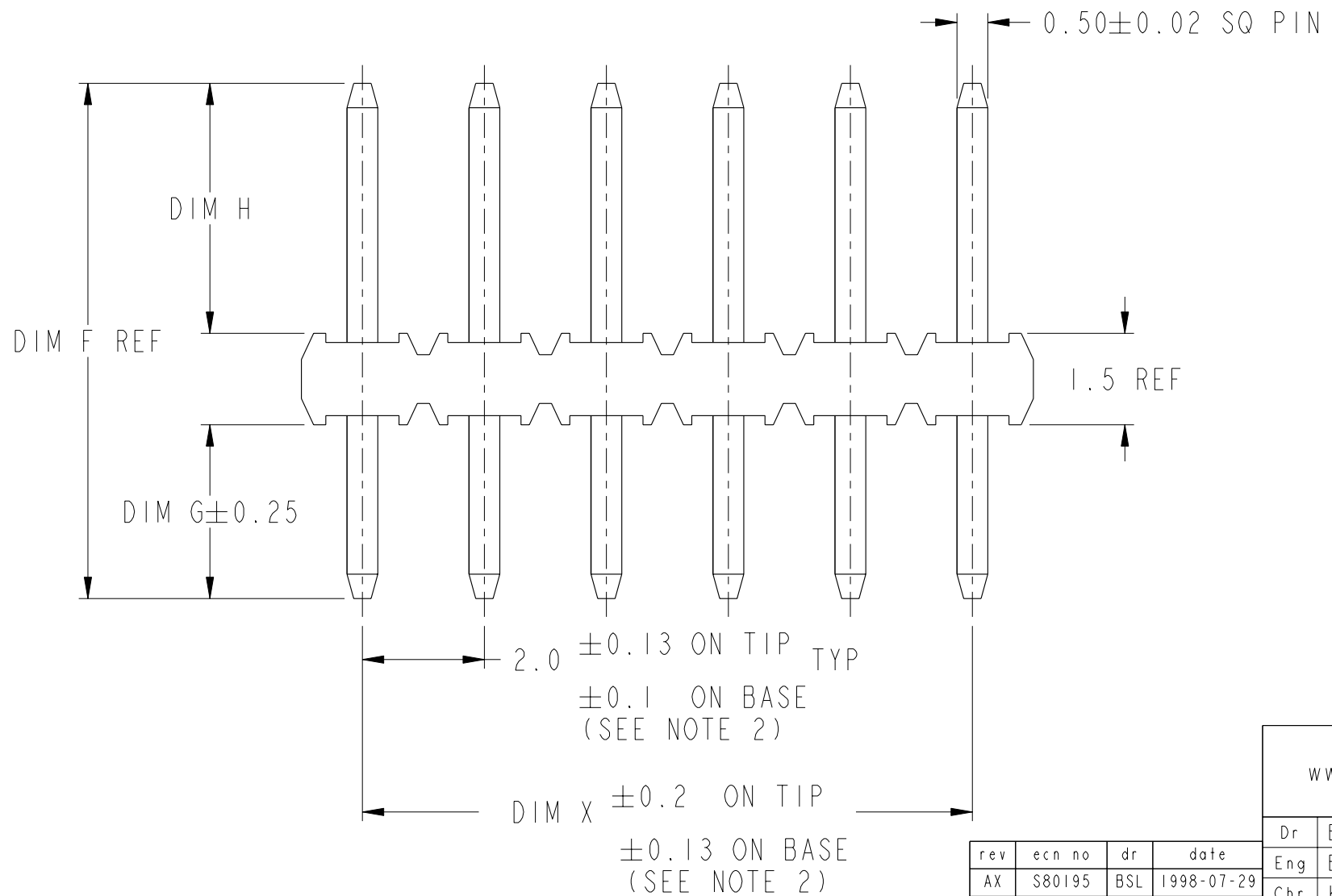
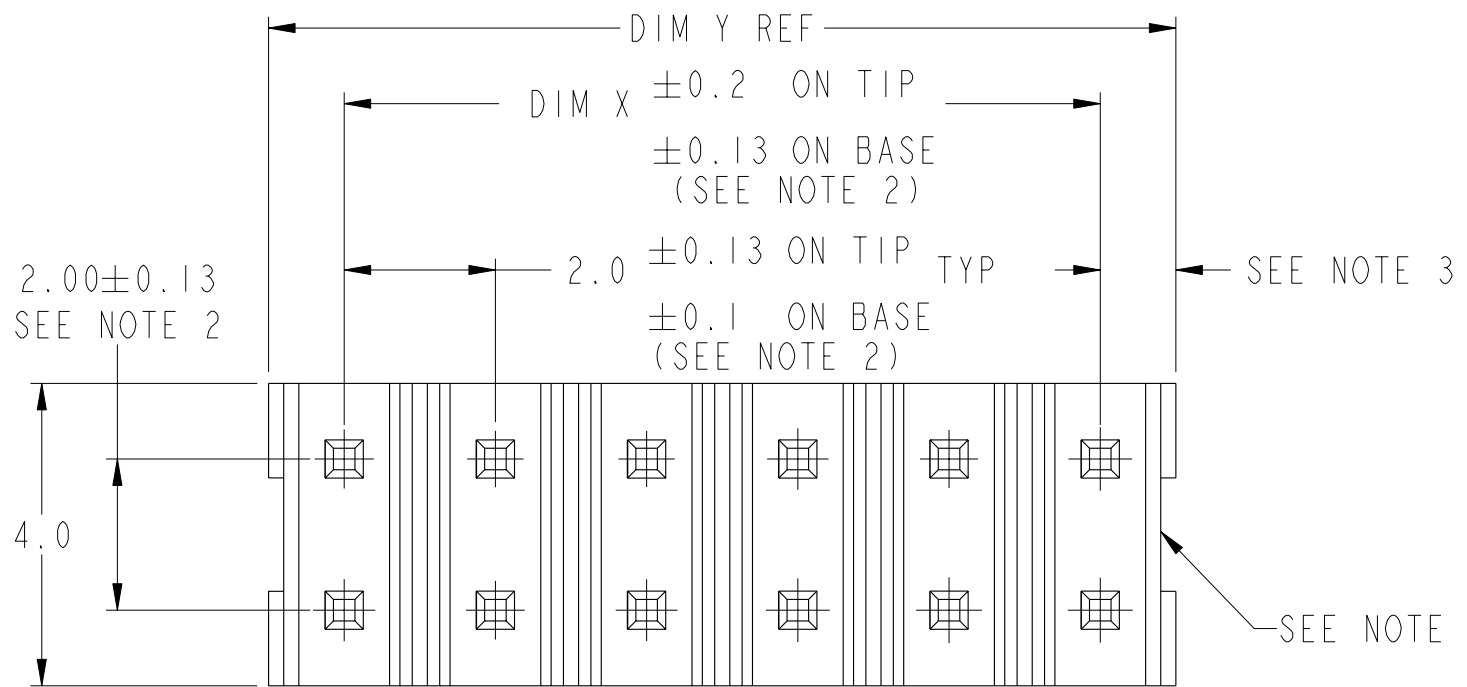
D

A

B

C

D



RECOMMENDED MOUNTING HOLE LAYOUT

CONFIDENTIAL

www.fciconnect.com		surface - ✓ ISO 1302	tolerance std ISO 406 ISO 1101	projection A3	MM
		TOLERANCES UNLESS OTHERWISE SPECIFIED		size	Scale 10:1
Dr	BS LOW	1999-09-08	ANGULAR	0.X	±
Eng	BS LOW	1999-09-08	LINEAR	0.XX	±0.25
Chr	KH LEE	2010-01-09	0° ±3°	0.XXX	±
Appr	JOEY NG	2010-01-09	Product family	MINITEK	Spec ref
FCI		title		MINITEK II HEADER	
				(2 ROWS STR)	
		catalog no		-	
		dwg no		86964	
		CUSTOMER		-	
		sheet 1 of 3		-	

rev	ecn no	dr	date
AX	S80195	BSL	1998-07-29
AY	S90046	BSL	1999-03-17
BA	S90159	BSL	1999-09-08
BB	S05-0057	KBM	2005-02-25
BC	S06-0236	KHL	2006-07-17
BD	S10-0205	NBR	2010-01-09
-	-	-	-



Copyright FCI.

PRODUCT NO	POS	DIM F	DIM G	DIM H	DIM X	DIM Y
86964-X01	2X8	12.7	4.3	6.9	14	16
X02	2X9	7.5	3.0	3.0	16	18
X03	2X22	11.9	1.5	8.9	42	44
X04	2X25	11.9	1.5	8.9	48	50
X05	2X6	8.9	3.7	3.7	10	12
X06	2X10	10.06	0.76	7.8	18	20
X07	2X25	13.45	3.0	8.9	48	50
X08	2X9	14.1	7.7	4.9	16	18
X09	2X3	8.0	2.5	4.0	4	6
X10	2X4	8.0	2.5	4.0	6	8
X11	2X14	8.0	2.5	4.0	26	28
X12	2X3	7.5	3.0	3.0	4	6
X13	2X9	11.2	3.0	6.7	16	18
X14	2X25	7.0	1.5	4.0	48	50
X15	2X8	14.5	7.1	5.9	14	16
X16	2X11	20.3	10.9	7.9	20	22
X17	2X6	8.2	3.0	3.7	10	12
X18	2X11	17.0	5.1	10.4	20	22
X19	2X20	9.5	4.0	4.0	38	40
X20	2X14	9.5	3.0	5.0	26	28
X21	2X16	10.5	4.5	4.5	30	32
X22	2X8	8.5	1.41	5.59	14	16
X23	2X15	13.5	3.0	9.0	28	30
X24	2X2	6.6	1.1	4.0	2	4
X25	2X10	6.6	1.1	4.0	18	20
X26	2X25	9.5	4.0	4.0	48	50
X27	2X5	7.3	1.8	4.0	8	10
X28	2X8	16.5	2.5	12.5	14	16
X29	2X16	16.5	2.5	12.5	30	32
X30	2X12	9.0	3.0	4.5	22	24

PRODUCT DESCRIPTION CODE:

XXXXX-XXXLF

LEAD FREE (SEE NOTE 5)

EXTENSION NUMBER

TERMINAL PLATING

BASE NUMBER

NOTES

1. MATERIAL

BODY : GLASS FILLED NYLON UL 94V-0 BLACK

PIN : PHOSPHOR BRONZE

2. FOR DIM G OR H GREATER THAN 9.0, TOL SHALL BE

2.0^{+0.15} ON TIP ON BASE TYP & DIM X^{+0.25} ON TIP ON BASE TYP

WHICHEVER APPLICABLE

3. DIM 1.0 ±0.15 FOR MOLDED SIDE(S) ONLY
IF SIDE(S) ARE BROKEN DIM 1.5 MAX APPLIES

4. RECESS APPLIES TO MOLDED SIDE(S) ONLY.

5. P/N:86964-XXXLF IS SAME AS P/N:86964-XXX. THE SUFFIX 'LF' IS ADDED JUST FOR EASY LEAD FREE IDENTIFICATION.

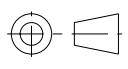
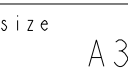

6. THE HOUSING WILL WITHSTAND EXPOSURE TO 260°C PEAK TEMPERATURE FOR 10 SECONDS IN A WAVE SOLDER APPLICATION WITH A 1.57MM MINIMUM THICK CIRCUIT BOARD.

7. THIS PRODUCT MEETS EUROPEAN UNION DIRECTIVES AND OTHER COUNTRY REGULATIONS AS DESCRIBED IN GS-22-008.

8. A  SYMBOL WILL BE NEXT TO ANY DIMENSION, VIEW OR NOTE WHICH HAS BEEN MODIFIED WITH THE CURRENT DRAWING REVISION.

PLATING	DESCRIPTION
0	0.2µm Au
1	0.76µm Au
2	UNASSIGNED
3	0.38µm Au
4	UNASSIGNED
5	0.38µm GXT
6	0.76µm GXT

CONFIDENTIAL

www.fciconnect.com		surface <input checked="" type="checkbox"/> ISO 1302	tolerance std ISO 406 ISO 1101	projection 	MM
		TOLERANCES UNLESS OTHERWISE SPECIFIED			Scale 5:1
Dr	BS LOW	1999-09-08	ANGULAR	0.X	±
Eng	BS LOW	1999-09-08	LINEAR	0.XX	±0.25
Chr	KH LEE	2010-01-09	0° ±3°	0.XXX	±
Appr	JOEY NG	2010-01-09	Product family	MINITEK	Spec ref
		MINITEK II HEADER (2 ROWS STR)		dwg no	86964
		catalog no	-	CUSTOMER	sheet 2 of 3

1

2

3

4

PRODUCT NO	POS	DIM F	DIM G	DIM H	DIM X	DIM Y
86964-X31	2X22	7.0	1.5	4.0	42	44
X32	2X15	13.2	5.84	5.84	28	30
X33	2X12	8.5	3.5	3.5	22	24
X34	2X6	16.0	2.5	12.0	10	12
X35	2X20	16.0	2.5	12.0	38	40
X36	2X6	19.0	2.5	15.0	10	12
X37	2X20	19.0	2.5	15.0	38	40
X38	2X16	5.5	2.0	2.0	30	32
X39	2X17	5.5	2.0	2.0	32	34
X40	2X16	13.45	3.0	8.9	30	32
X41	2X25	11.2	3.0	6.7	48	50
X42	2X4	16.5	2.5	12.5	6	8
X43	2X5	12.4	2.6	8.3	8	10
X44	2X22	7.5	2.5	3.5	42	44
X45	2X10	12.7	4.3	6.9	18	20
X46	2X25	7.8	2.3	4.0	48	50
X47	2X2	7.5	2.5	3.5	2	4
X48	2X3	9.5	4.0	4.0	4	6
X49	2X22	17.0	5.1	10.4	42	44
X50	2X22	9.5	4.0	4.0	42	44
X51	2X25	10.5	2.65	6.35	48	50
X52	2X4	13.45	3.0	8.9	6	8
X53	2X3	11.20	2.85	6.85	4	6
X54	2X17	16.5	2.5	12.5	32	34
X55	2X3	10.0	1.0	7.5	4	6

A

B

C

D

A

B

C

D



Copyright FCI.

CONFIDENTIAL

www.fciconnect.com		surface ISO 1302	tolerance std ISO 406 ISO 1101	projection	MM
TOLERANCES UNLESS OTHERWISE SPECIFIED					
Dr	BS LOW	1999-09-08	ANGULAR	0.X ±	size A3
Eng	BS LOW	1999-09-08	LINEAR	0.XX ±0.25	Scale 10:1
Chr	KH LEE	2010-01-09	0° ±3°	0.XXX ±	ECN S10-0205
Appr	JOEY NG	2010-01-09	Product family	MINITEK	Spec ref
	title MINITEK II HEADER (2 ROWS STR)			dwg no 86964	Rev. BD
catalog no				CUSTOMER	sheet 3 of 3

REV E - 2006-03-28

1

2

3

PDM: Rev:BD

STATUS Released

Printed: Oct 13, 2010