



Chipsmall Limited consists of a professional team with an average of over 10 year of expertise in the distribution of electronic components. Based in Hongkong, we have already established firm and mutual-benefit business relationships with customers from,Europe,America and south Asia,supplying obsolete and hard-to-find components to meet their specific needs.

With the principle of “Quality Parts,Customers Priority,Honest Operation,and Considerate Service”,our business mainly focus on the distribution of electronic components. Line cards we deal with include Microchip,ALPS,ROHM,Xilinx,Pulse,ON,Everlight and Freescale. Main products comprise IC,Modules,Potentiometer,IC Socket,Relay,Connector.Our parts cover such applications as commercial,industrial, and automotives areas.

We are looking forward to setting up business relationship with you and hope to provide you with the best service and solution. Let us make a better world for our industry!



Contact us

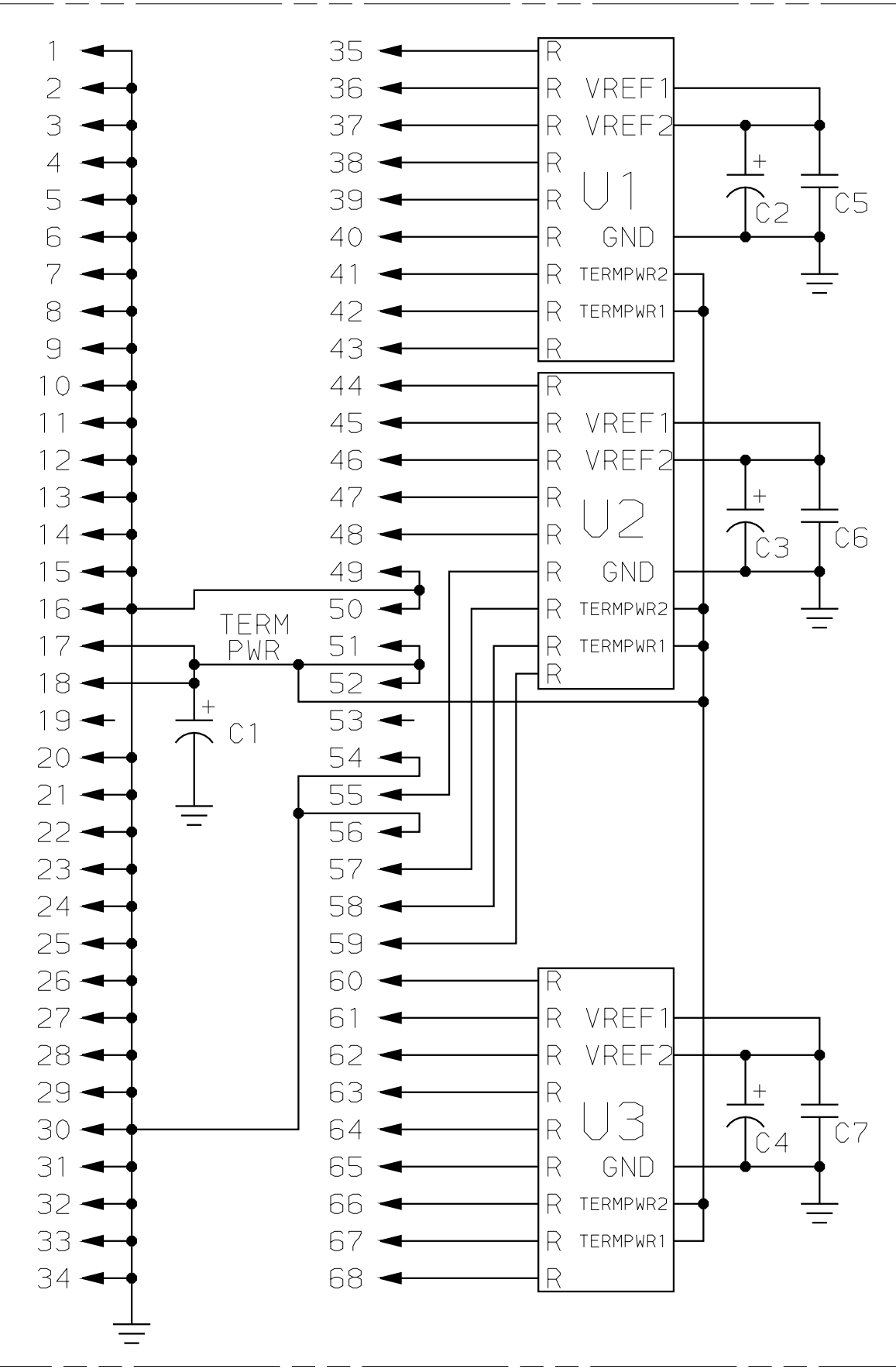
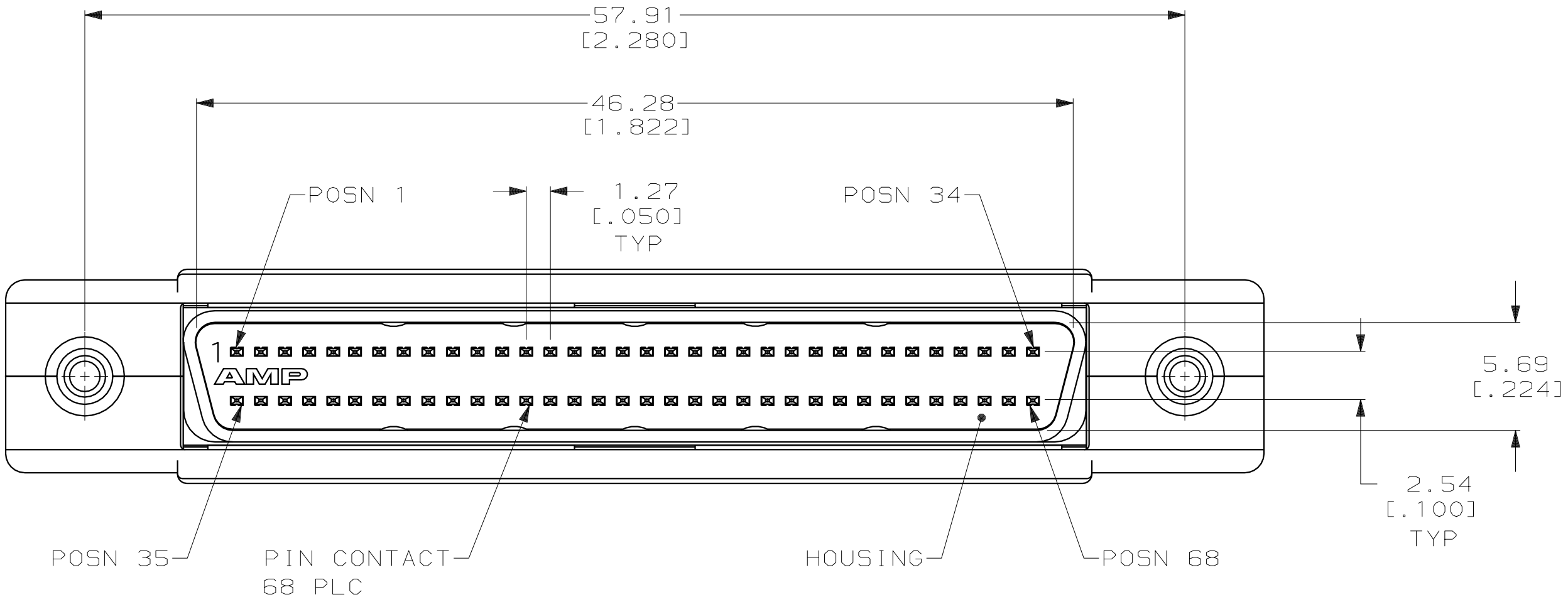
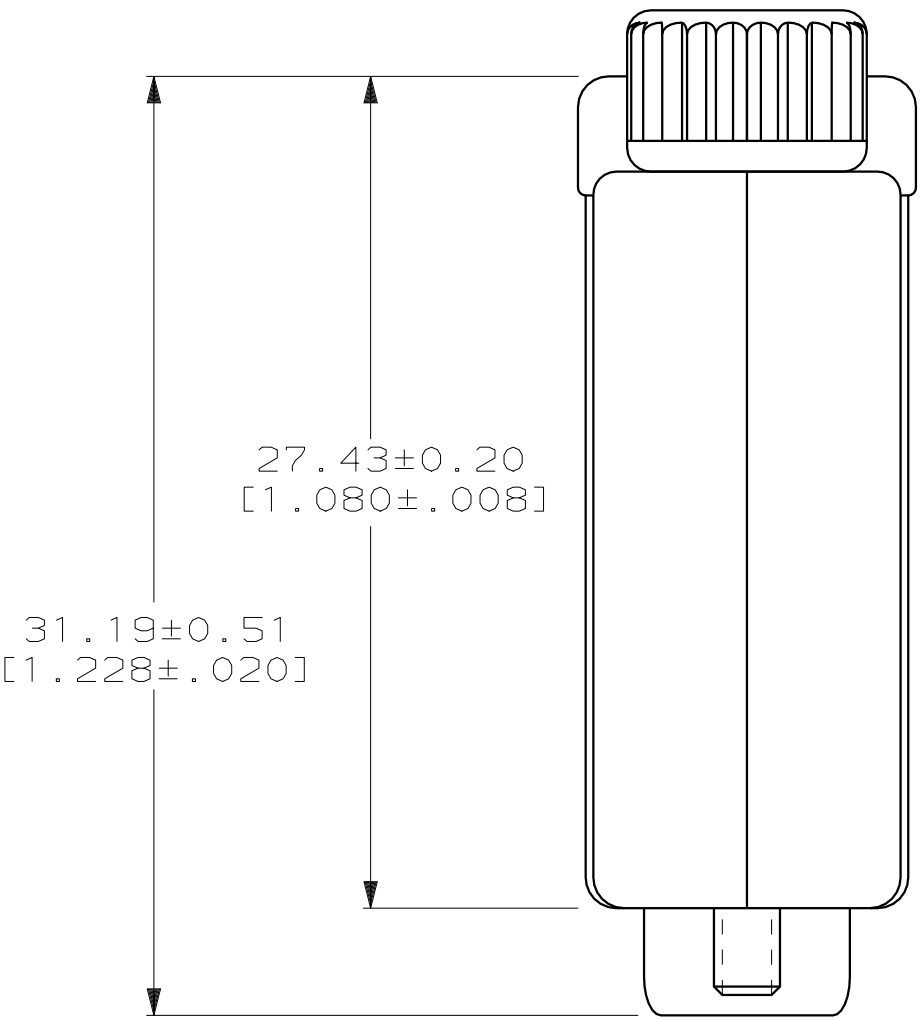
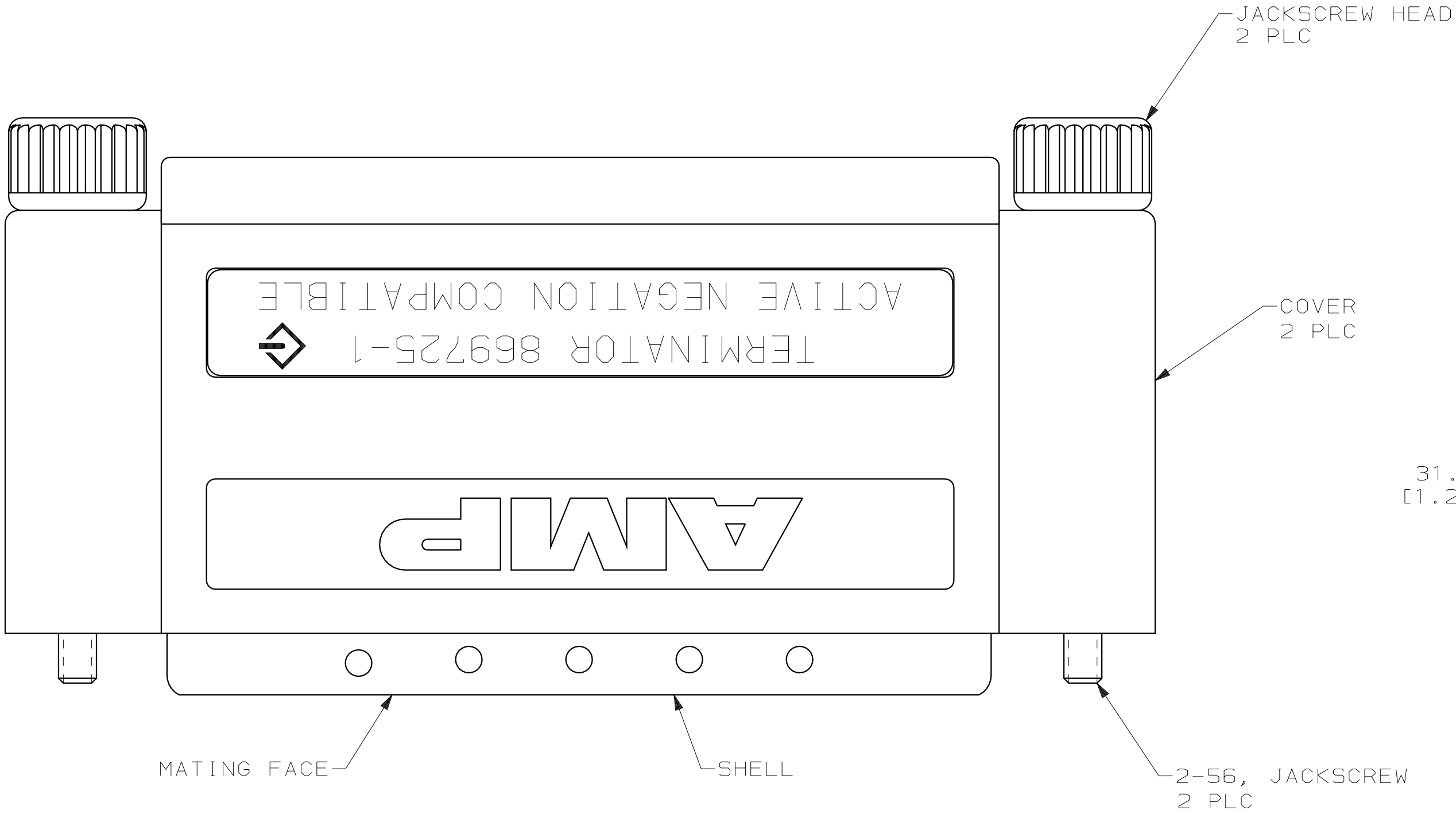
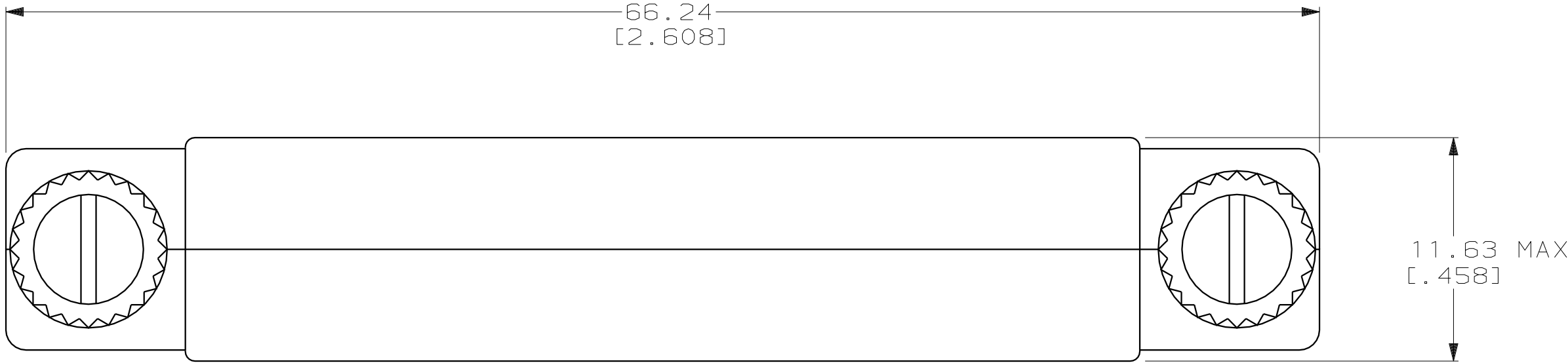
Tel: +86-755-8981 8866 Fax: +86-755-8427 6832

Email & Skype: info@chipsmall.com Web: www.chipsmall.com

Address: A1208, Overseas Decoration Building, #122 Zhenhua RD., Futian, Shenzhen, China



LOC		DIST		P	F	ZONE	LTR	REVISIONS		
GP	00							DESCRIPTION	DATE	APPD
							0	RLSE NPR 4643, WAS 93-4163-004-10	3-93	-
							A	REV PER EC 0020-1462-93	01/31/94	MLP
							B	REV PER ECN 0020-556-94	05/19/94	DW
							C	REV PER EC 0020-26-95	02/01/95	PR
							D	ADDED -2 PER EC 0420-104-97	17 JUL 97	JV
							E	REV PER EC 051A-0168-00	28 JUN 00	MG



SCHEMATIC
△4 △5

- △1 SHELL: CARBON STEEL; PIN CONTACT: PHOSPHOR BRONZE; HOUSING: POLYESTER, UL94 V-0 RATED, BLACK; PC BOARD: LAMINATED PLASTIC (GRADE FR-4), COPPER CLAD; JACKSCREW: STAINLESS STEEL; SHIELD: COPPER; COVER: ABS, UL94 V-0 RATED, GREY; JACKSCREW HEAD: PVC, GREY.
- △2 5.08μm[.000200] MIN TIN-NICKEL OVER 1.27μm[.000050] MIN COPPER.
- △3 0.76μm[.000030] MIN GOLD FOR A LENGTH OF 3.35[.132] MIN FROM MATING END OVER 1.27μm[.000050] MIN NICKEL.
- △4 C1: 2.2μF TANTALUM CAPACITOR, 15V MIN, ±20%; C2, C3, AND C4: 4.7μF TANTALUM CAPACITOR, 15V MIN, ±20%; C5, C6, AND C7: 0.1μF CERAMIC CAPACITOR, 25V MIN, ±20%; U1, U2, AND U3: 20-PIN TERMINATOR.
- △5 PIN DESIGNATORS R REPRESENTS R1 THRU R9.
- △6 SEE RESTRICTED CUSTOMER DRAWING 869725-2.

△6
869725-1
PART NUMBER

DO NOT SCALE PRINT. UNLESS SPECIFIED DIMENSIONS IN mm [INCHES] TOLERANCES ON : 2 PLC DEC ± 0.25[.010] 3 PLC DEC ± - ANGLES ± -		DR 03/22/93 J.McCLINTON		<div>AMP</div> <div>AMP Incorporated Harrisburg, PA 17105-3608</div>		
MATERIAL △1	FINISH SHELL: △2 CONTACTS: △3	CHK 04/05/93 R.STONE				
		APPD 04/23/93 M.PAIKIN	NAME			
APPD 04/23/93 M.PAIKIN		PLUG ASSEMBLY, 68 POSITION, .050 SERIES AMPLIMITE™, TERMINATOR				
PRODUCT SPEC -						
APPLICATION SPEC -		SIZE CAGE CODE DRAWING NO. D 00779 C=869725-1				
WEIGHT -		SCALE 4:1 SHEET 1 OF 1				

THIS DRAWING IS A CONTROLLED DOCUMENT FOR
AMP INCORPORATED. IT IS SUBJECT TO CHANGE
AND THE CONTROLLING ENGINEERING ORGANIZATION
SHOULD BE CONTACTED FOR THE LATEST REVISION.