



Chipsmall Limited consists of a professional team with an average of over 10 year of expertise in the distribution of electronic components. Based in Hongkong, we have already established firm and mutual-benefit business relationships with customers from,Europe,America and south Asia,supplying obsolete and hard-to-find components to meet their specific needs.

With the principle of “Quality Parts,Customers Priority,Honest Operation,and Considerate Service”,our business mainly focus on the distribution of electronic components. Line cards we deal with include Microchip,ALPS,ROHM,Xilinx,Pulse,ON,Everlight and Freescale. Main products comprise IC,Modules,Potentiometer,IC Socket,Relay,Connector.Our parts cover such applications as commercial,industrial, and automotives areas.

We are looking forward to setting up business relationship with you and hope to provide you with the best service and solution. Let us make a better world for our industry!



## Contact us

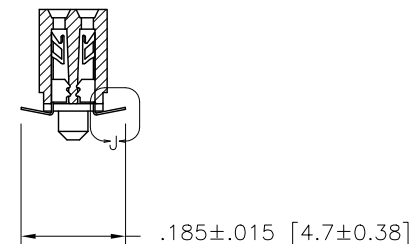
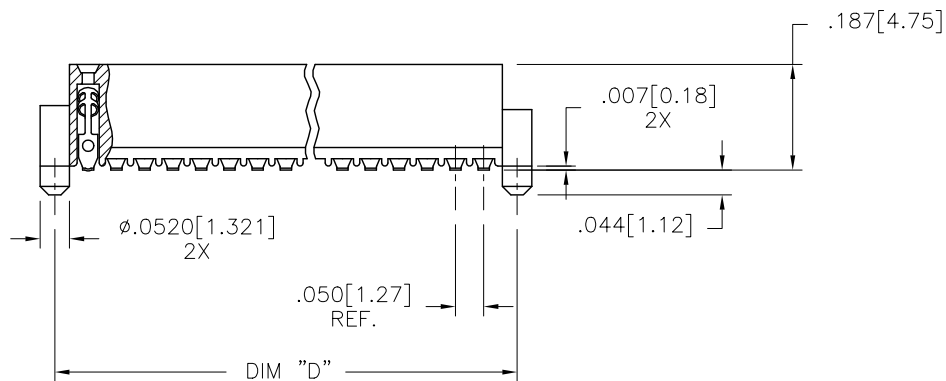
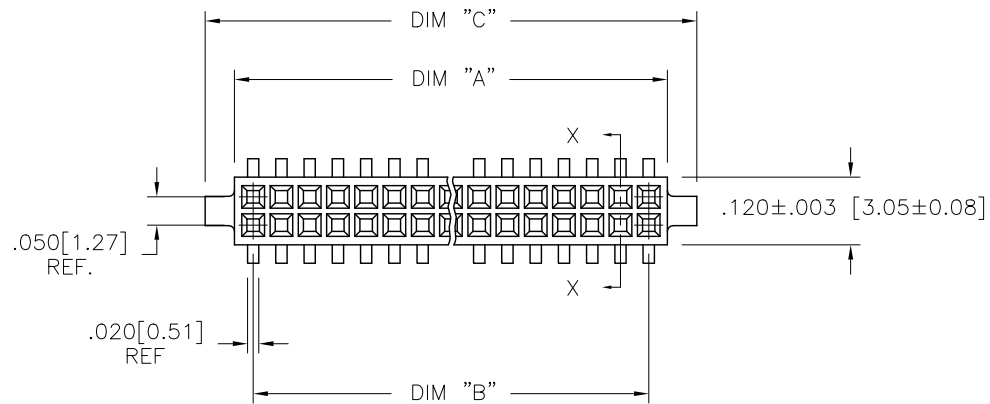
Tel: +86-755-8981 8866 Fax: +86-755-8427 6832

Email & Skype: info@chipsmall.com Web: www.chipsmall.com

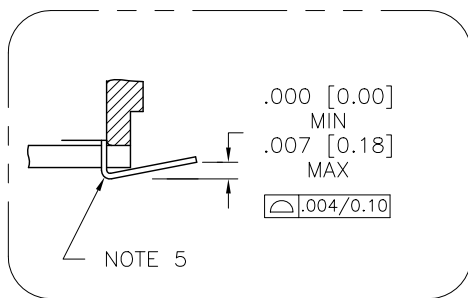
Address: A1208, Overseas Decoration Building, #122 Zhenhua RD., Futian, Shenzhen, China



PRODUCT NUMBER  
SEE TABLE



SECTION X-X



DETAIL J  
SCALE 10/1

mat'l. code -				surface ISO 1302 ✓	tolerance ISO 406 ISO 1101	projection ISO 1101	product family RIB CAGE
ltr	ecn no	dr	date	tolerances unless otherwise specified		INCH/MM	title .050cc VERT. CARD CONN. SURF. MT. W/LOC. FEATURES
AC	M05-0084	MHT	5/05/05	angles	linear		
AD	M06-0284	AEA	7/27/06	σ±2'	linear	scale 3:1	dwg no 87023 sheet 1 of 4 size A3
AE	M07-0267	MHT	6/08/07	σ±2'	linear	xxxx ±.0020/.050	
AF	M07-0345	AGS	7/26/07	dr	M. CLOUSER	5/25/91	FCJ type Product Customer Drawing
AG	M09-0345	CMR	4/06/09	enfr	B. BARUFFALO	5/25/91	
AH	N10-0174	YO	6/17/10	chr	B. BARUFFALO	5/25/91	
AJ	ELX-N-010201	YO	2/8/12	appd	B. BARUFFALO	5/25/91	
sheet index	revision sheet	AJ	AJ	AJ	AJ		
		1	2	3	4		

PRODUCT NO.  
87023 - XXX

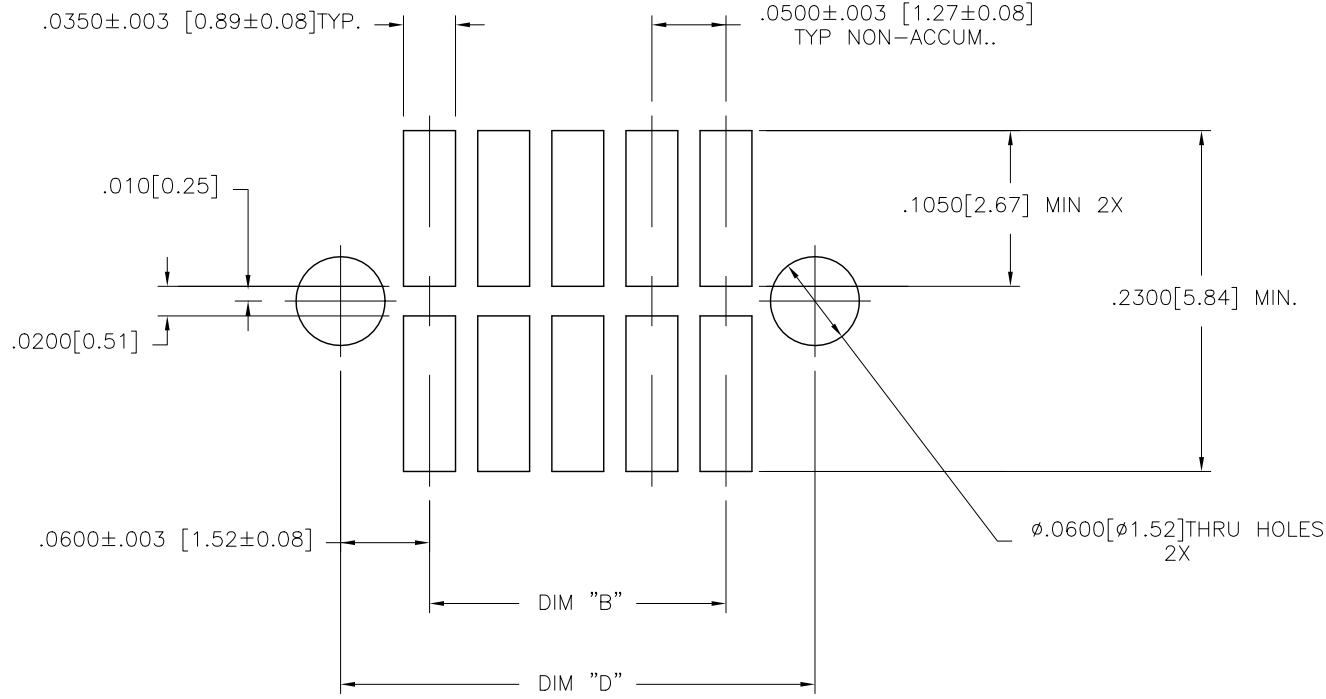


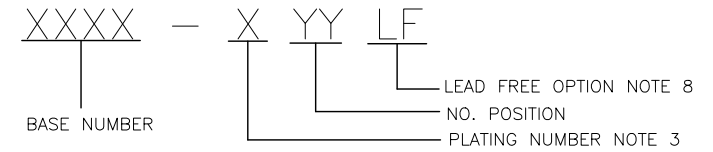
FIGURE A  
RECOMMENDED  
P.C.B. LAYOUT

mat'l. code		surface		tolerance		projection		product family	
-		ISO 1302 ✓		ISO 406 ISO 1101				RIB CAGE	
ltr	ecn	no	dr	date		tolerances unless otherwise specified		title	
AJ						angles	linear	XX ±.01/.3	.050cc VERT. CARD CONN. SURF. MT. W/LOC. FEATURES
						σ±2'	linear	xxx ±.005/.13	
								xxxx ±.0020/.050	
						dr	M. CLOUSER	5/25/91	
						enfr	B. BARUFFALO	5/25/91	
						chr	B. BARUFFALO	5/25/91	
						appd	B. BARUFFALO	5/25/91	scale 3:1 dwg no 87023 sheet 2 of 4 size A3
sheet index		revision sheet						type Product Customer Drawing	

FCI  
FCIconnect.com

Copyright FCI

PRODUCT NO. NOTE 8	SIZE	DIM A	DIM B	DIM C	DIM D	SPECIAL PACKAGING	TAPE WIDTH		PIECES PER REEL
								PITCH	
87023-605	2 X 5	.266/6.756	.200/5.08	.370/9.398	.3200/8.128	NOTE 6	24mm	12mm	750
-610	2 X 10	.516/13.106	.450/11.43	.620/15.748	.5700/14.478	NOTE 6	24mm	12mm	750
-615	2 X 15	.766/19.456	.700/17.78	.870/22.098	.8200/20.828	NOTE 6	44mm	12mm	500
-620	2 X 20	1.016/25.806	.950/24.13	1.120/28.448	1.0700/27.178	NOTE 6 & 7	44mm	12mm	500
-625	2 X 25	1.266/32.156	1.200/30.48	1.370/34.798	1.3200/33.528	NOTE 6	56mm	12mm	500
-630	2 X 30	1.516/38.506	1.450/36.83	1.620/41.148	1.5700/39.878	NOTE 6 & 7	56mm	12mm	500
-635	2 X 35	1.766/44.856	1.700/43.18	1.870/47.498	1.8200/46.228	NOTE 6	72mm	12mm	500
-640	2 X 40	2.016/51.206	1.950/49.53	2.120/53.848	2.0700/52.578	NOTE 6 & 7	72mm	12mm	500
-645	2 X 45	2.266/57.556	2.200/55.88	2.370/60.198	2.3200/58.928	NOTE 6	72mm	12mm	500
-650	2 X 50	2.516/63.906	2.450/62.23	2.620/66.548	2.5700/65.278	NOTE 6	88mm	12mm	500
-905	2 X 5	.266/6.756	.200/5.08	.370/9.398	.3200/8.128	NO	—	—	—
-910	2 X 10	.516/13.106	.450/11.43	.620/15.748	.5700/14.478	NO	—	—	—
-915	2 X 15	.766/19.456	.700/17.78	.870/22.098	.8200/20.828	NO	—	—	—
-920	2 X 20	1.016/25.806	.950/24.13	1.120/28.448	1.0700/27.178	NO	—	—	—
-925	2 X 25	1.266/32.156	1.200/30.48	1.370/34.798	1.3200/33.528	NO	—	—	—
-930	2 X 30	1.516/38.506	1.450/36.83	1.620/41.148	1.5700/39.878	NO	—	—	—
-935	2 X 35	1.766/44.856	1.700/43.18	1.870/47.498	1.8200/46.228	NO	—	—	—
-940	2 X 40	2.016/51.206	1.950/49.53	2.120/53.848	2.0700/52.578	NO	—	—	—
-945	2 X 45	2.266/57.556	2.200/55.88	2.370/60.198	2.3200/58.928	NO	—	—	—
87023-950	2 X 50	2.516/63.906	2.450/62.23	2.620/66.548	2.5700/65.278	NO	—	—	—



NOTES:

- HOUSING MATERIAL:  
GLASS FILLED THERMOPLASTIC FLAME RETARDANT PER UL 94V-0  
COLOR: NATURAL
- TERMINAL MATERIAL: BeCu
- TERMINAL PLATING:  
-6XXLF: 30u"/.76um MIN HARD GOLD OR GXT OVER Ni ON CONTACT ZONES.  
100u"/2.54um MIN PURE TIN OVER Ni  
IN SOLDERING ZONES, OTHERWISE GOLD FLASH OR UNPLATED.  
-9XXLF: 60u"/1.52um MIN HARD GOLD ON CONTACT ZONES,  
100u"/2.54um MIN PURE TIN OVER Ni  
OVER Ni IN SOLDERING ZONES, OTHERWISE GOLD FLASH OR UNPLATED.
- APPLICATION INFORMATION:  
A. RECOMMENDED MOUNTING PAD PATTERN IS SHOWN IN FIGURE "A".  
B. MATING PINS TO BE .0176/0.447 TO .0181/0.459 DIA.  
C. MATING PIN TIPS TO BE IN TRUE POSITION TO MATING GRID WITHIN .006/0.15 DIA.  
D. SUGGESTED MATING PIN LENGTH .130/3.30 ±.010/0.25.
- LEAD TIPS TO BE ABOVE HEEL, UP TO .007/0.18 MAX.  
COPLANARITY TO BE MEASURED AT LOWEST POINT (HEEL).
- ADD "TR" TO END OF DASH NUMBER FOR TAPE AND REEL PACKAGED WITH CAP. TOOLED ONLY FOR NOTED CONNECTORS.
- ADD "CT" TO END OF DASH NUMBER FOR CONNECTOR WITH CAP FOR VACUUM PICKUP IN TUBE.
- ADD LF SUFFIX AT THE END OF PART NUMBER FOR LEAD FREE OPTION.
- THE HOUSING WILL WITHSTAND EXPOSURE TO 260°C PEAK TEMPERATURE FOR 20 SECONDS IN A CONVECTION, INFRA-RED OR VAPOR PHASE REFLOW OVEN. SEE APPLICATION NOTE/PROCEDURES IF THEY ARE AVAILABLE.
- THIS PRODUCT MEETS EUROPEAN UNION DIRECTIVES AND OTHER COUNTRY REGULATION AS DESCRIBED IN GS-22-008.
- PRODUCT SPEC PER BUS-12-087.

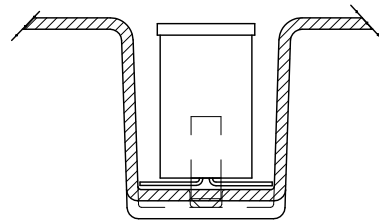
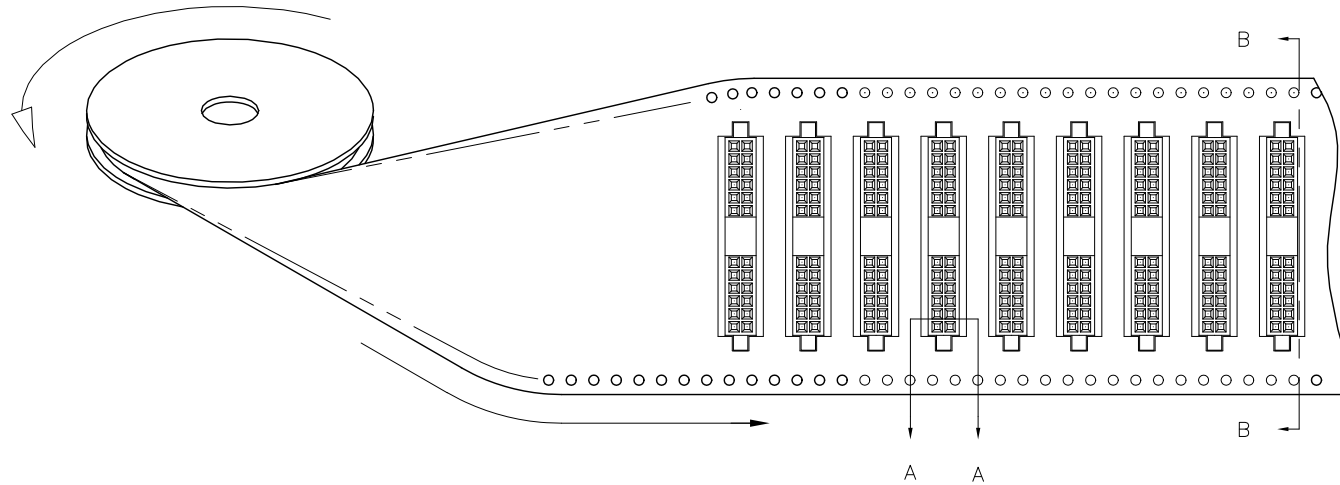
mat'l. code		surface		tolerance		projection		product family	
-		ISO 1302 ✓		ISO 406				RIB CAGE	
				ISO 1101				title	
ltr		ecn		no		dr		date	
AJ									
				tolerances unless otherwise specified				.050cc VERT. CARD CONN.	
				angles		linear		SURF. MT. W/LOC. FEATURES	
				σ±2'		xxx ±.005/.13		scale 3:1	
				dr		M. CLOUSER 5/25/91		dwg no	
				enrg		B. BARUFFALO 5/25/91		sheet 3 of 4	
				chr		B. BARUFFALO 5/25/91		size	
				appd		B. BARUFFALO 5/25/91		87023	
								A3	
								type	
								Product Customer Drawing	
sheet		revision							
index		sheet							

PRODUCT NUMBER  
SEE TABLE

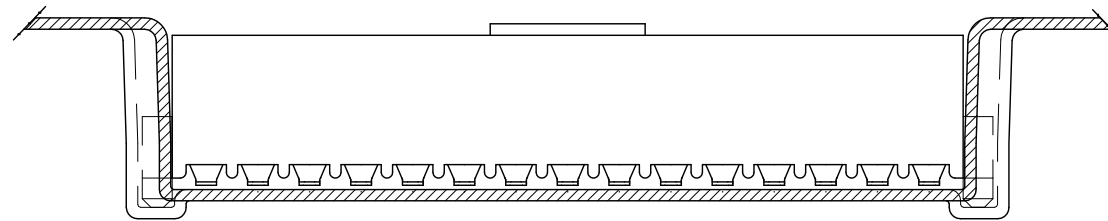
UNREELING  
DIRECTION

REFERENCE ONLY

TAPE WIDTH'S 32mm AND ABOVE HAS BOTH FEED TRACKS,  
BELOW 32mm HAS TOP FEED TRACK ONLY.



SECTION A-A



SECTION B-B

mat'l. code		surface		tolerance		projection		product family	
-		ISO 1302 ✓		ISO 406 ISO 1101				RIB CAGE	
ltr	ecn	no	dr	date		tolerances unless otherwise specified		title	
AJ						angles linear xx ±.01/.3 xxx ±.005/.13 xxx ±.0020/.050		INCH/MM scale 3:1	
						dr M. CLOUSER 5/25/91 engr B. BARUFFALO 5/25/91 chr B. BARUFFALO 5/25/91 appd B. BARUFFALO 5/25/91		FCI sheet 4 of 4 size 87023 A3	
sheet index		revision sheet						type Product Customer Drawing	