



Chipsmall Limited consists of a professional team with an average of over 10 year of expertise in the distribution of electronic components. Based in Hongkong, we have already established firm and mutual-benefit business relationships with customers from,Europe,America and south Asia,supplying obsolete and hard-to-find components to meet their specific needs.

With the principle of “Quality Parts,Customers Priority,Honest Operation,and Considerate Service”,our business mainly focus on the distribution of electronic components. Line cards we deal with include Microchip,ALPS,ROHM,Xilinx,Pulse,ON,Everlight and Freescale. Main products comprise IC,Modules,Potentiometer,IC Socket,Relay,Connector.Our parts cover such applications as commercial,industrial, and automotives areas.

We are looking forward to setting up business relationship with you and hope to provide you with the best service and solution. Let us make a better world for our industry!



Contact us

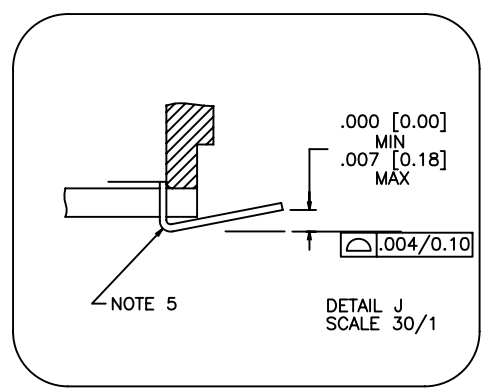
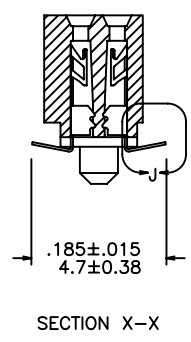
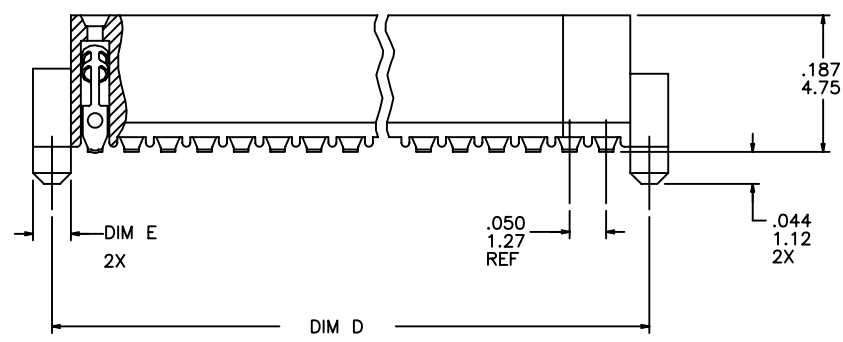
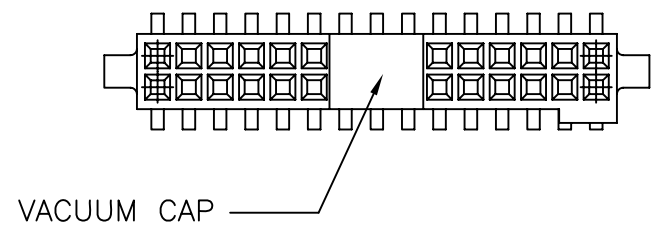
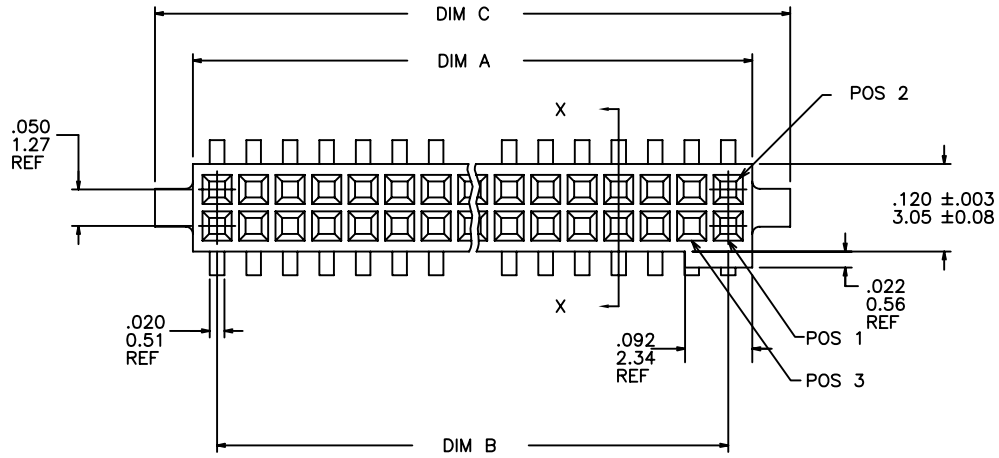
Tel: +86-755-8981 8866 Fax: +86-755-8427 6832

Email & Skype: info@chipsmall.com Web: www.chipsmall.com

Address: A1208, Overseas Decoration Building, #122 Zhenhua RD., Futian, Shenzhen, China



PRODUCT NUMBER
SEE TABLE



mat'l. code		surface		tolerance		projection		product family	
-		ISO 1302		ISO 406 ISO 1101		INCH/MM		RIB CAGE	
ltr		ecn no		dr		date		title	
AH		EX-N-19819		JH		12/22/14		.050cc VERT. SMT. W/LOC. & POL. FEATURE	
				angles		linear		scale 1:1	
				σ±z		XX±.01/XX±0.3 XXX±.005/XXX±0.13 XXXX±.0020/XXX±0.051			
AD		M09-0058		CMR		4/06/09		dr M. CLOUSER 6/26/91	
AE		M09-0071		MHT		4/30/09		enr B. BARUFFALO 6/26/91	
AF		N10-0174		YOH		6/17/10		chr B. BARUFFALO 6/26/91	
AG		EX-N-010202		YO		2/8/12		app B. BARUFFALO 6/26/91	
sheet		revision		AH		AH		AH	
index		sheet		1		2		3	

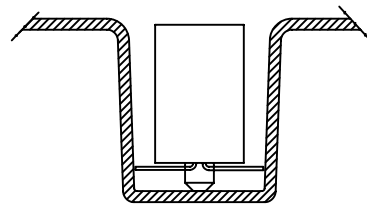
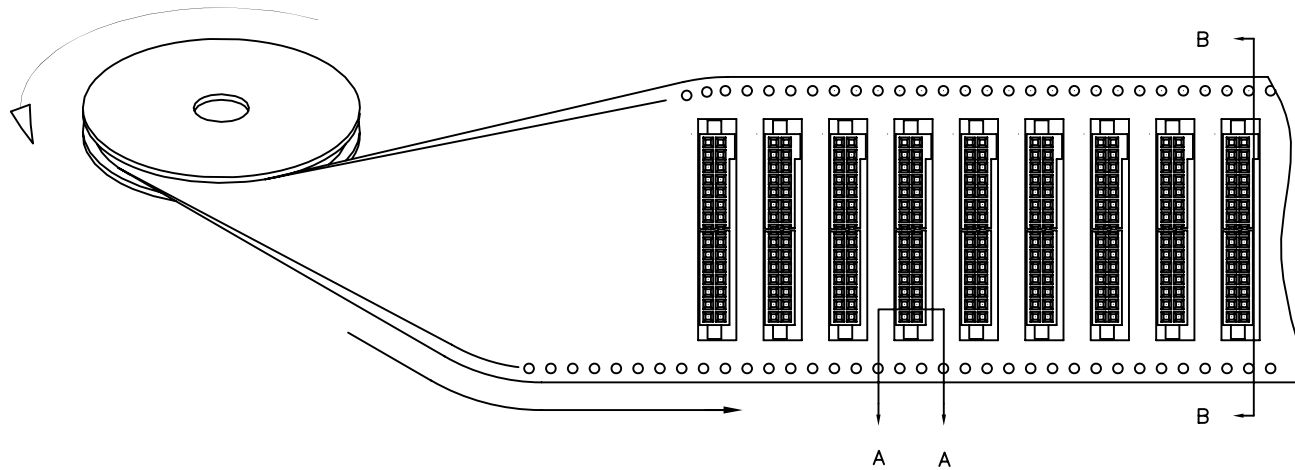


Copyright FCJ

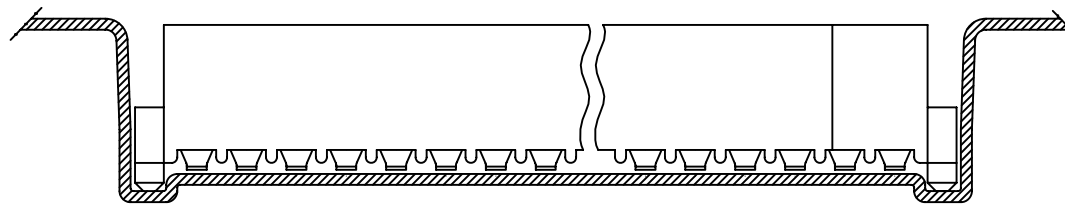
REFERENCE ONLY

TAPE WIDTH'S 32mm AND ABOVE HAS BOTH FEED TRACKS, BELOW 32mm HAS TOP FEED TRACK ONLY.

UNREELING DIRECTION



SECTION A-A



SECTION B-B



FCJconnect.com

Copyright FCI

mat'l. code		surface		tolerance		projection		product family	
-		ISO 1302 ✓		ISO 406		INCH/MM		RIB CAGE	
tr		ecn		no		dr		date	
AH		angles		linear		scale 1:1		title	
		σ±z		XXX±.0020/XXX±0.051				.050cc VERT. SMT. W/LOC. & POL. FEATURE	
		dr		M. CLOUSER		6/26/91		dwg no	
		enr		B. BARUFFALO		6/26/91		sheet 3 of 3	
		chr		B. BARUFFALO		6/26/91		size	
		app		B. BARUFFALO		6/26/91		A3	
sheet		revision						type	
index		sheet						Product Customer Drawing	

PRODUCT NO. NOTE 9	SIZE	DIM A	DIM B	DIM C	DIM D	DIM E	SPECIAL PACKAGING	TAPE WIDTH PITCH	PIECES PER REEL
87024-605	2 X 5	.266/6.756	.200/5.08	.370/9.398	.3200/8.128	ø.0520/1.321	NOTE 6	24mm 12mm	750
-610	2 X 10	.516/13.106	.450/11.43	.620/15.748	.5700/14.478	ø.0520/1.321	NOTE 6	24mm 12mm	750
-610P	2 X 10	.516/13.106	.450/11.43	.620/15.748	.5700/14.478	ø.0520/1.321	NOTE 8	24mm 16mm	400
-615	2 X 15	.766/19.456	.700/17.78	.870/22.098	.8200/20.828	ø.0520/1.321	NOTE 6	44mm 12mm	500
-620	2 X 20	1.016/25.806	.950/24.13	1.120/28.448	1.0700/27.178	ø.0520/1.321	NOTE 6 & 7	44mm 12mm	500
-625	2 X 25	1.266/32.156	1.200/30.48	1.370/34.798	1.3200/33.528	ø.0520/1.321	NOTE 6	56mm 12mm	500
-630	2 X 30	1.516/38.506	1.450/36.83	1.620/41.148	1.5700/39.878	ø.0520/1.321	NOTE 6 & 7	56mm 12mm	500
-635	2 X 35	1.766/44.856	1.700/43.18	1.870/47.498	1.8200/46.228	ø.0520/1.321	NOTE 6	72mm 12mm	500
-640	2 X 40	2.016/51.206	1.950/49.53	2.120/53.848	2.0700/52.578	ø.0520/1.321	NOTE 6 & 7	72mm 12mm	500
-645	2 X 45	2.266/57.556	2.200/55.88	2.370/60.198	2.3200/58.928	ø.0520/1.321	NOTE 6	72mm 12mm	500
-650	2 X 50	2.516/63.906	2.450/62.23	2.620/66.548	2.5700/65.278	ø.0520/1.321	NOTE 6 & 7	88mm 12mm	500
-625S	2 X 25	1.266/32.156	1.200/30.48	1.370/34.798	1.3200/33.528	ø.0394/1.00	NOTE 6	56mm 12mm	500

NOTES:

- HOUSING MATERIAL:
LCP GLASS FILLED FLAME RETARDANT PER UL 94V-0
COLOR: NATURAL
- TERMINAL MATERIAL: BeCu
- TERMINAL PLATING:
30u"/.76um MIN HARD GOLD OR GXT OVER Ni ON CONTACT ZONES,
100u"/2.54um MIN TIN OVER Ni IN SOLDERING ZONES,
OTHERWISE GOLD FLASH OR UNPLATED.
- APPLICATION INFORMATION:
A. RECOMMENDED MOUNTING PAD PATTERN IS
SHOWN IN FIGURE "A".
B. MATING PINS TO BE .0176/0.447 TO .0181/0.459 DIA.
C. MATING PIN TIPS TO BE IN TRUE POSITION TO MATING
GRID WITHIN .006/0.15 DIA.
D. SUGGESTED MATING PIN LENGTH .130/3.30
±.010/0.25.
- LEAD TIPS TO BE ABOVE HEEL, UP TO .007/0.18 MAX.
COPLANARITY TO BE MEASURED AT LOWEST POINT (HEEL).
- IF LF P/N THE PRODUCT MEETS EUROPEAN UNION DIRECTIVES AND OTHER
COUNTRY REGULATION AS DESCRIBED IN GS-22-008.
- THE HOUSING WILL WITHSTAND EXPOSURE TO 260°C PEAK TEMPERATURE
FOR 20 SECONDS IN A CONVECTION, INFRA-RED OR VAPOR PHASE REFLOW
OVEN. SEE APPLICATION NOTES/PROCEDURES IF THEY ARE AVAILABLE.
- PRODUCT SPEC PER BUS-12-087.
- PN DEFINE:

87024-605XXXLF

LEAD FREE

WITH "TR": TAPE AND REEL+CAP
WITHOUT "CT": TUPE+CAP

WITH "P": THE CARRIER'S PITCH IS 16MM
WITHOUT "P": THE CARRIER'S PITCH IS 12MM

WITH "S": THE POST'S DIAMETER IS 1.00MM, FOR FIGURE B
WITHOUT "S": THE POST'S DIAMETER IS 1.321MM, FOR FIGURE A

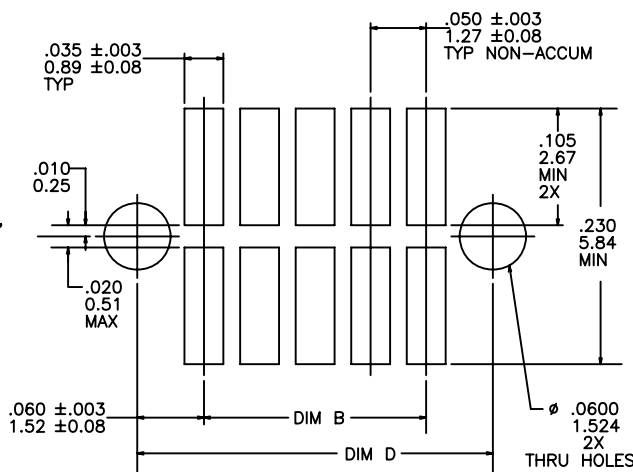


FIGURE A
RECOMMENDED
P.C.B. LAYOUT

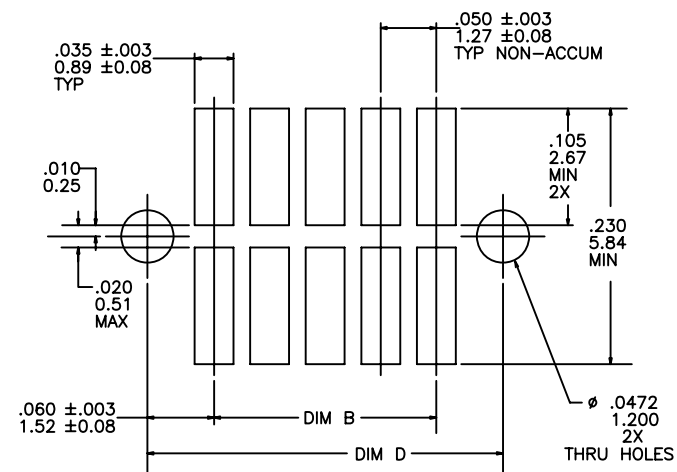


FIGURE B
RECOMMENDED
P.C.B. LAYOUT

mat'l. code		surface		tolerance		projection		product family	
-		ISO 1302		ISO 406		INCH/MM		RIB CAGE	
tr		ecn		no		dr		date	
AH									
angles		linear		XXX±.005/XXX±0.13		scale 1:1		title	
σ±z				XXXX±.0020/XXX±0.051				.050cc VERT. SMT. W/LOC. & POL. FEATURE	
dr		M. CLOUSER		6/26/91				dwg no	
enr		B. BARUFFALO		6/26/91				sheet 2 of 3	
chr		B. BARUFFALO		6/26/91				size	
app		B. BARUFFALO		6/26/91				87024	
sheet		revision						type	
index		sheet						Product Customer Drawing	