



Chipsmall Limited consists of a professional team with an average of over 10 year of expertise in the distribution of electronic components. Based in Hongkong, we have already established firm and mutual-benefit business relationships with customers from,Europe,America and south Asia,supplying obsolete and hard-to-find components to meet their specific needs.

With the principle of “Quality Parts,Customers Priority,Honest Operation,and Considerate Service”,our business mainly focus on the distribution of electronic components. Line cards we deal with include Microchip,ALPS,ROHM,Xilinx,Pulse,ON,Everlight and Freescale. Main products comprise IC,Modules,Potentiometer,IC Socket,Relay,Connector.Our parts cover such applications as commercial,industrial, and automotives areas.

We are looking forward to setting up business relationship with you and hope to provide you with the best service and solution. Let us make a better world for our industry!



## Contact us

Tel: +86-755-8981 8866 Fax: +86-755-8427 6832

Email & Skype: info@chipsmall.com Web: www.chipsmall.com

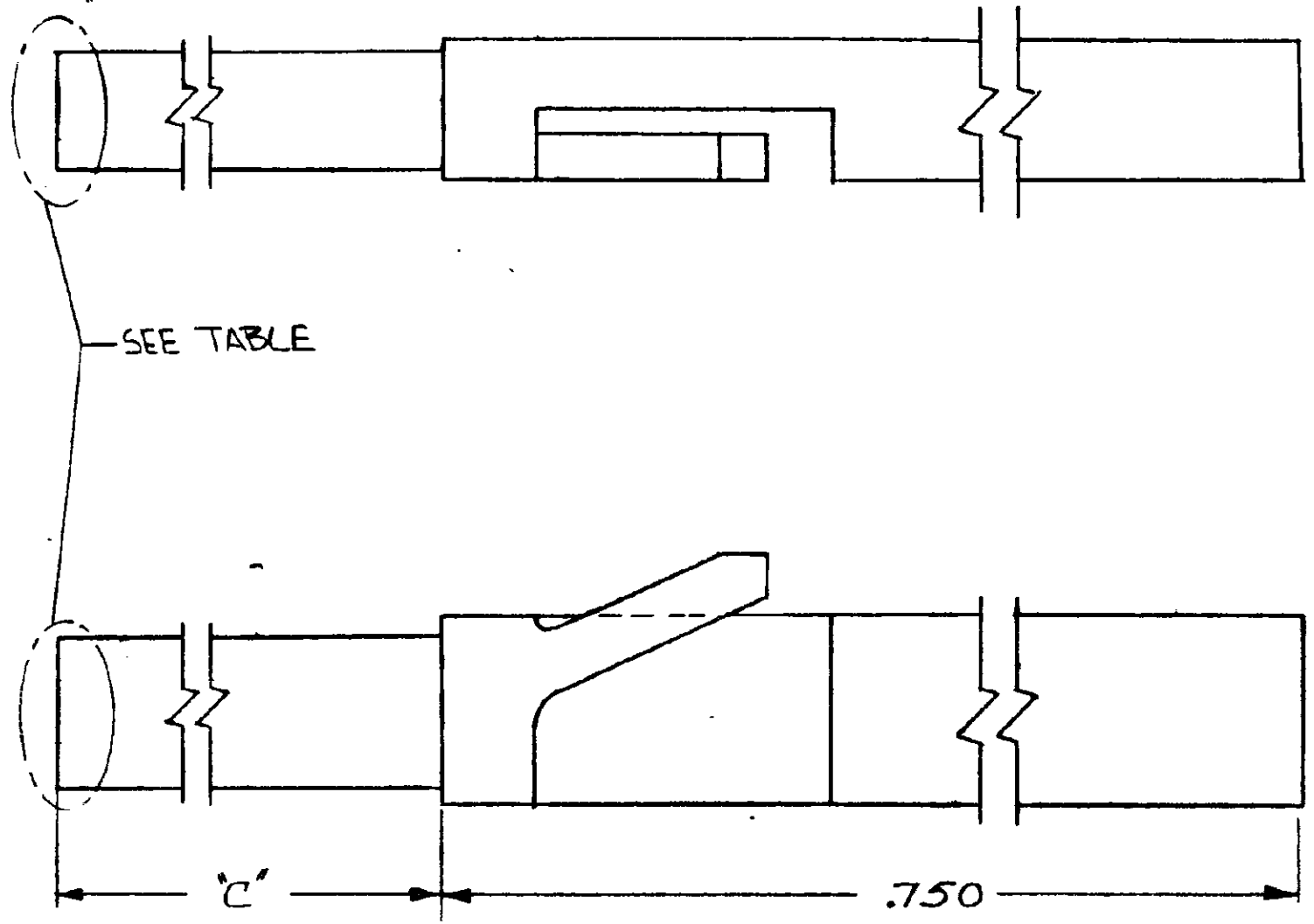
Address: A1208, Overseas Decoration Building, #122 Zhenhua RD., Futian, Shenzhen, China



DRAWING MADE IN AMERICAN PROJECTION

© 1972 BY AMP INCORPORATED. ALL RIGHTS RESERVED. AMP PRODUCTS COVERED BY PATENTS AND/OR PATENTS PENDING.

REVISIONS				
ZONE	LTR	DESCRIPTION	DATE	APPROVED
	3	RELEASED WAC 5-2-83	5-2-83	JH
	01	ADDED - 3 & NOTE #1 PER ECN #14	9-12-72	JH
	02	ADDED TIP DETAIL PER ECN 422	1-8-74	SLW
	A	REV LOC 4 DIST AD-4171	11-21-89	BF
	B	REV PER 0010-1103-43	3-15-99	EB



④ TIP DETAIL D

⑤ 1. RECOMMENDED HOLE SIZE IN P.C. BOARD FOR PLUG "C" END  $.125^{+.004}_{-.002}$

OBSOLETE	SEE DETAIL D	.312	87116-3
	AS SHOWN	.050	87116-2
OBSOLETE	SEE DETAIL D	.650	87116-1
	REMARKS	'C' DIM.	PART NO

UNLESS OTHERWISE SPECIFIED DIMENSIONS ARE IN INCHES TOLERANCES ON: DECIMALS ± .01 ANGLES ± .5°	CONTRACT NO.	AMP INCORPORATED HARRISBURG, PENNSYLVANIA	
	DR. <i>4-18-72</i>	AMP	
MATERIAL NYLON COLOR: NATURAL	CHK. <i>S. Hende 6/9/72</i>	NAME KEYING PLUG, MODI.	
	APPD. <i>Mark 6/14/72</i>	SIZE B	CODE IDENT NO. 00779
	REL. <i>S. Hende 6-9-72</i>	NUMBER 87116	SHEET
	DSGN APPD.	SCALE 1/1	
	OTHER APPD.		