



Chipsmall Limited consists of a professional team with an average of over 10 year of expertise in the distribution of electronic components. Based in Hongkong, we have already established firm and mutual-benefit business relationships with customers from,Europe,America and south Asia,supplying obsolete and hard-to-find components to meet their specific needs.

With the principle of “Quality Parts,Customers Priority,Honest Operation,and Considerate Service”,our business mainly focus on the distribution of electronic components. Line cards we deal with include Microchip,ALPS,ROHM,Xilinx,Pulse,ON,Everlight and Freescale. Main products comprise IC,Modules,Potentiometer,IC Socket,Relay,Connector.Our parts cover such applications as commercial,industrial, and automotives areas.

We are looking forward to setting up business relationship with you and hope to provide you with the best service and solution. Let us make a better world for our industry!



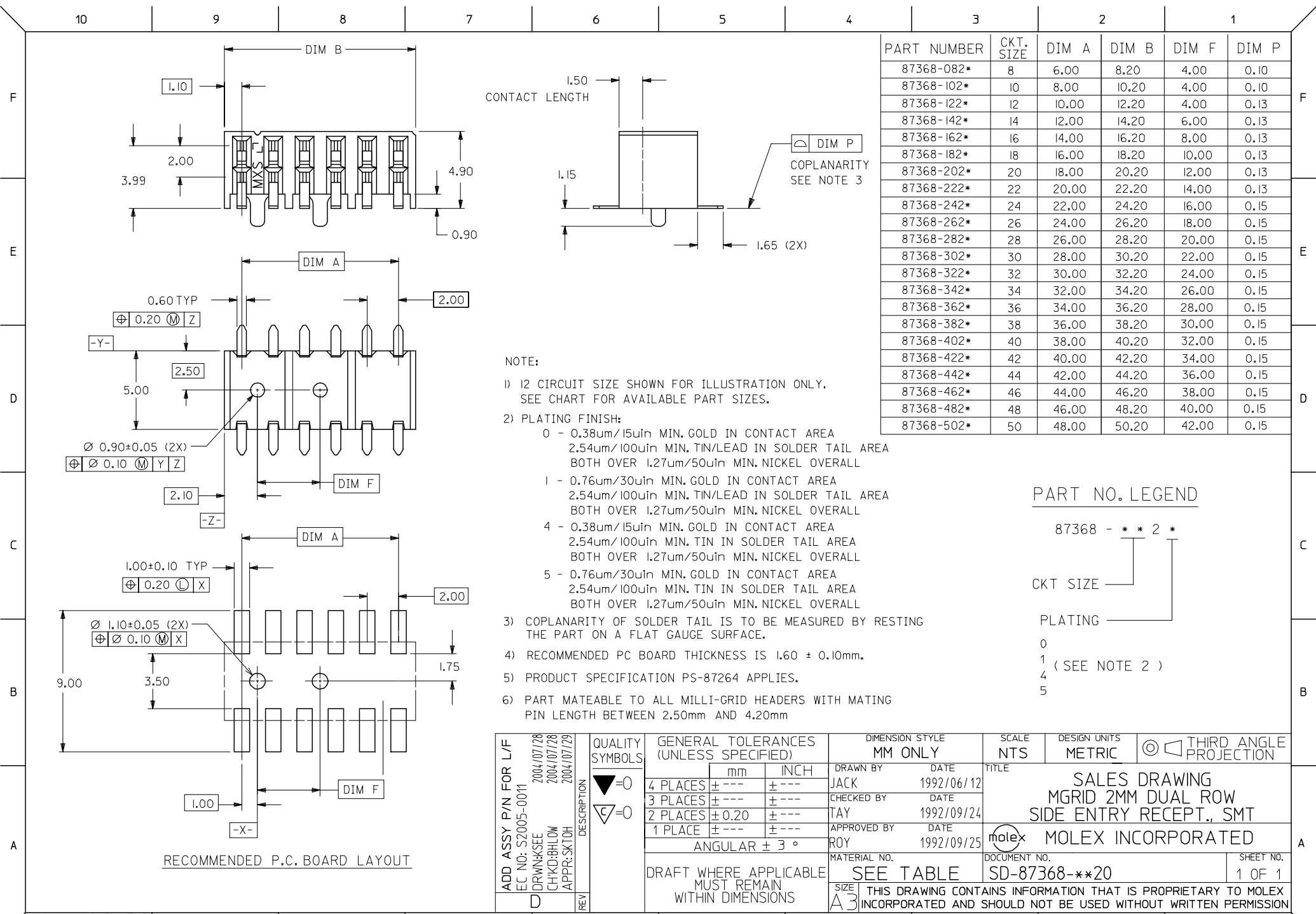
Contact us

Tel: +86-755-8981 8866 Fax: +86-755-8427 6832

Email & Skype: info@chipsmall.com Web: www.chipsmall.com

Address: A1208, Overseas Decoration Building, #122 Zhenhua RD., Futian, Shenzhen, China





| PART NUMBER | CKT. SIZE | DIM A | DIM B | DIM F | DIM P |
|-------------|-----------|-------|-------|-------|-------|
| 87368-082* | 8 | 6.00 | 8.20 | 4.00 | 0.10 |
| 87368-102* | 10 | 8.00 | 10.20 | 4.00 | 0.10 |
| 87368-122* | 12 | 10.00 | 12.20 | 4.00 | 0.13 |
| 87368-142* | 14 | 12.00 | 14.20 | 6.00 | 0.13 |
| 87368-162* | 16 | 14.00 | 16.20 | 8.00 | 0.13 |
| 87368-182* | 18 | 16.00 | 18.20 | 10.00 | 0.13 |
| 87368-202* | 20 | 18.00 | 20.20 | 12.00 | 0.13 |
| 87368-222* | 22 | 20.00 | 22.20 | 14.00 | 0.13 |
| 87368-242* | 24 | 22.00 | 24.20 | 16.00 | 0.15 |
| 87368-262* | 26 | 24.00 | 26.20 | 18.00 | 0.15 |
| 87368-282* | 28 | 26.00 | 28.20 | 20.00 | 0.15 |
| 87368-302* | 30 | 28.00 | 30.20 | 22.00 | 0.15 |
| 87368-322* | 32 | 30.00 | 32.20 | 24.00 | 0.15 |
| 87368-342* | 34 | 32.00 | 34.20 | 26.00 | 0.15 |
| 87368-362* | 36 | 34.00 | 36.20 | 28.00 | 0.15 |
| 87368-382* | 38 | 36.00 | 38.20 | 30.00 | 0.15 |
| 87368-402* | 40 | 38.00 | 40.20 | 32.00 | 0.15 |
| 87368-422* | 42 | 40.00 | 42.20 | 34.00 | 0.15 |
| 87368-442* | 44 | 42.00 | 44.20 | 36.00 | 0.15 |
| 87368-462* | 46 | 44.00 | 46.20 | 38.00 | 0.15 |
| 87368-482* | 48 | 46.00 | 48.20 | 40.00 | 0.15 |
| 87368-502* | 50 | 48.00 | 50.20 | 42.00 | 0.15 |

- NOTE:
- 1) 12 CIRCUIT SIZE SHOWN FOR ILLUSTRATION ONLY. SEE CHART FOR AVAILABLE PART SIZES.
 - 2) PLATING FINISH:
 - 0 - 0.38um/15uin MIN. GOLD IN CONTACT AREA
2.54um/100uin MIN. TIN/LEAD IN SOLDER TAIL AREA
BOTH OVER 1.27um/50uin MIN. NICKEL OVERALL
 - 1 - 0.76um/30uin MIN. GOLD IN CONTACT AREA
2.54um/100uin MIN. TIN/LEAD IN SOLDER TAIL AREA
BOTH OVER 1.27um/50uin MIN. NICKEL OVERALL
 - 4 - 0.38um/15uin MIN. GOLD IN CONTACT AREA
2.54um/100uin MIN. TIN IN SOLDER TAIL AREA
BOTH OVER 1.27um/50uin MIN. NICKEL OVERALL
 - 5 - 0.76um/30uin MIN. GOLD IN CONTACT AREA
2.54um/100uin MIN. TIN IN SOLDER TAIL AREA
BOTH OVER 1.27um/50uin MIN. NICKEL OVERALL
 - 3) COPLANARITY OF SOLDER TAIL IS TO BE MEASURED BY RESTING THE PART ON A FLAT GAUGE SURFACE.
 - 4) RECOMMENDED PC BOARD THICKNESS IS 1.60 ± 0.10mm.
 - 5) PRODUCT SPECIFICATION PS-87264 APPLIES.
 - 6) PART MATEABLE TO ALL MILLI-GRID HEADERS WITH MATING PIN LENGTH BETWEEN 2.50mm AND 4.20mm

| | | | | | | | | | | | | |
|--|--|-------------------------------|---------------------------------------|--|--|--|--------------------|------------------------|---|--|---------------------|--|
| ADD ASSY P/N FOR L/F EC NO: S2005-0011 DRAWN: SEE CHKD: BHLW APPR: SKTOH | 2004/07/28 2004/07/28 2004/07/29 | QUALITY SYMBOLS ▽=0 ▽=0 | GENERAL TOLERANCES (UNLESS SPECIFIED) | | DIMENSION STYLE MM ONLY | | SCALE NTS | DESIGN UNITS METRIC | THIRD ANGLE PROJECTION | | | |
| | | | | | DRAWN BY JACK | | DATE 1992/06/12 | | TITLE SALES DRAWING MGRID 2MM DUAL ROW SIDE ENTRY RECEPT., SMT | | | |
| | | | | | CHECKED BY TAY | | DATE 1992/09/24 | | | | | |
| | | | | | APPROVED BY ROY | | DATE 1992/09/25 | | DOCUMENT NO. SD-87368-**20 | | SHEET NO. 1 OF 1 | |
| DRAFT WHERE APPLICABLE MUST REMAIN WITHIN DIMENSIONS | | | SIZE A3 | | THIS DRAWING CONTAINS INFORMATION THAT IS PROPRIETARY TO MOLEX INCORPORATED AND SHOULD NOT BE USED WITHOUT WRITTEN PERMISSION | | | | | | | |