



Chipsmall Limited consists of a professional team with an average of over 10 year of expertise in the distribution of electronic components. Based in Hongkong, we have already established firm and mutual-benefit business relationships with customers from,Europe,America and south Asia,supplying obsolete and hard-to-find components to meet their specific needs.

With the principle of “Quality Parts,Customers Priority,Honest Operation,and Considerate Service”,our business mainly focus on the distribution of electronic components. Line cards we deal with include Microchip,ALPS,ROHM,Xilinx,Pulse,ON,Everlight and Freescale. Main products comprise IC,Modules,Potentiometer,IC Socket,Relay,Connector.Our parts cover such applications as commercial,industrial, and automotives areas.

We are looking forward to setting up business relationship with you and hope to provide you with the best service and solution. Let us make a better world for our industry!



## Contact us

Tel: +86-755-8981 8866 Fax: +86-755-8427 6832

Email & Skype: info@chipsmall.com Web: www.chipsmall.com

Address: A1208, Overseas Decoration Building, #122 Zhenhua RD., Futian, Shenzhen, China



10 9 8 7 6 5 4 3 2 1

F

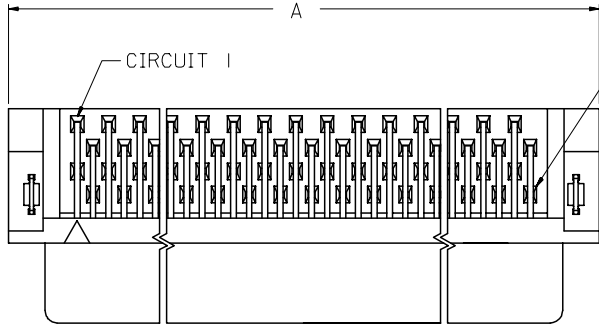
E

D

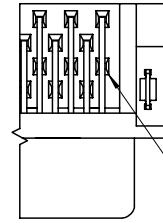
C

B

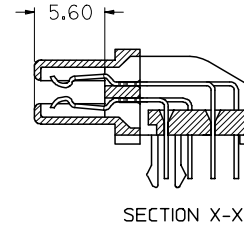
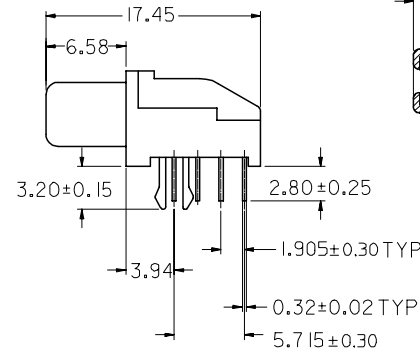
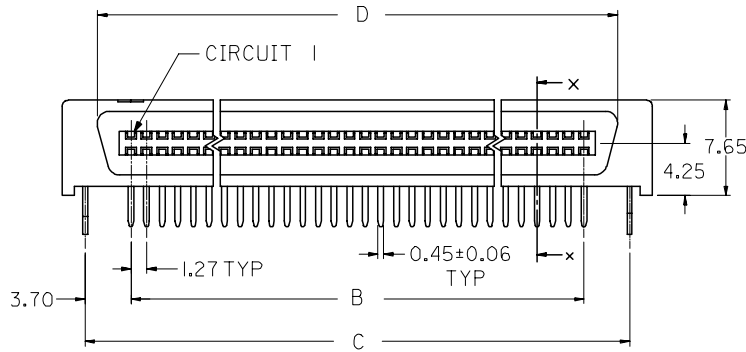
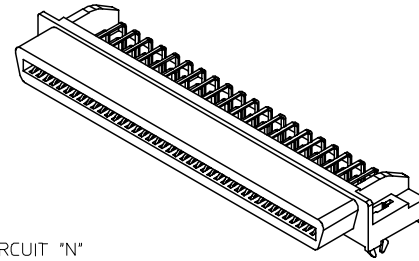
A



FOR CIRCUIT SIZES 68 AND 80 ONLY



FOR CIRCUIT SIZE 50 ONLY



**NOTES:**

1. MATERIAL: HOUSING -- HIGH TEMP. THERMOPLASTIC, UL94-V0  
TERMINALS -- COPPER ALLOY
2. PLATING:  
 2A 0.75µM MIN. GOLD IN SELECTIVE CONTACT AREA AND  
 2.5µM MIN. TIN IN SOLDER TAIL AREA, BOTH  
 OVER 1.27µM MIN. NICKEL.
3. ASSEMBLY MATES WITH MOLEX P/N 71661-\*\*\*\*.
4. RECOMMENDED P.C. BOARD THICKNESS IS 1.60MM.
5. PRODUCT SPEC. NO.: PS-87552-006
6. SEE TABLE ON SHEET 2 FOR ASSEMBLY PART NUMBERS.

REVISED EC NO: S2008-0347 DRWN:SKANG CHKD:ATSEE APPR:MLONG	2007/11/12 2007/11/12 2007/11/14	DESCRIPTION H3	QUALITY SYMBOLS ▽=0 ▽=0
	REV	REV	REV

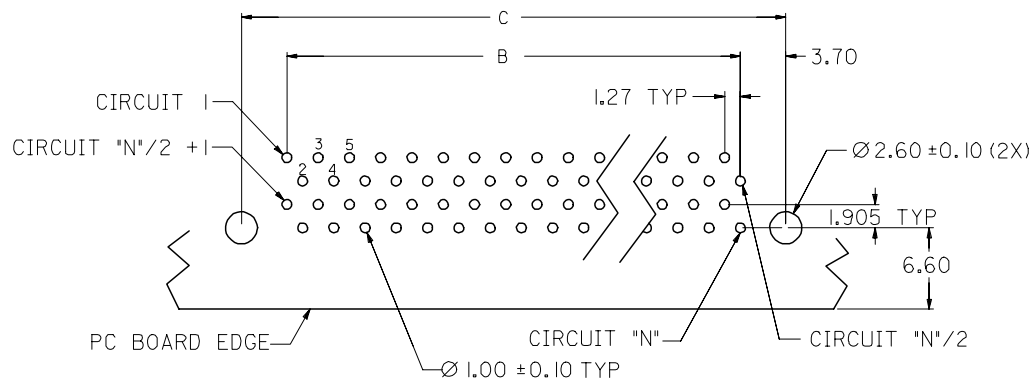
GENERAL TOLERANCES (UNLESS SPECIFIED)	
mm	INCH
4 PLACES ± ---	± ---
3 PLACES ± ---	± ---
2 PLACES ± 0.3	± ---
1 PLACE ± ---	± ---
ANGULAR ± 3 °	
DRAFT WHERE APPLICABLE MUST REMAIN WITHIN DIMENSIONS	

DIMENSION STYLE	
MM ONLY	
DRAWN BY	DATE
DS0H	1997/04/01
CHECKED BY	DATE
KCLING	1997/05/06
APPROVED BY	DATE
SKT0H	1997/05/08
MATERIAL NO.	
SEE TABLE	
SIZE	
A3	

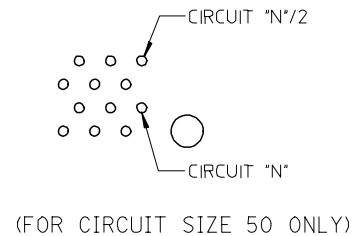
SCALE	DESIGN UNITS	THIRD ANGLE PROJECTION
NTS	METRIC	
TITLE		
EBBI, 1.27MM PITCH RECEPTACLE, R/A		
MOLEX INCORPORATED		
DOCUMENT NO.		SHEET NO.
SD-87552-007		1 OF 2
THIS DRAWING CONTAINS INFORMATION THAT IS PROPRIETARY TO MOLEX INCORPORATED AND SHOULD NOT BE USED WITHOUT WRITTEN PERMISSION		

9 8 7 6 5 4 3 2 1

	10	9	8	7	6	5	4	3	2	1
	D	C	B	A	CKT SIZE	ASSEMBLY PART NUMBER				
F	36.02	37.88	30.48	41.70	50	87552-0507				
	47.45	49.31	41.91	53.13	68	87552-0687				
	55.07	56.93	49.53	60.75	80	87552-0807				



RECOMMENDED PC BOARD LAYOUT  
COMPONENT SIDE  
(FOR CIRCUIT SIZES 68 AND 80 ONLY)



(FOR CIRCUIT SIZE 50 ONLY)

REVISED EC NO: S2008-0347 DRWN:SKANG CHKD:ATSEE APPR:MLONG 2007/11/12 2007/11/12 2007/11/14	DESCRIPTION H3	QUALITY SYMBOLS	GENERAL TOLERANCES (UNLESS SPECIFIED)	DIMENSION STYLE	SCALE	DESIGN UNITS	THIRD ANGLE PROJECTION																		
		$\nabla=0$ $\nabla C=0$	<table border="1"> <tr> <th></th> <th>mm</th> <th>INCH</th> </tr> <tr> <td>4 PLACES</td> <td><math>\pm</math>---</td> <td><math>\pm</math>---</td> </tr> <tr> <td>3 PLACES</td> <td><math>\pm</math>---</td> <td><math>\pm</math>---</td> </tr> <tr> <td>2 PLACES</td> <td><math>\pm 0.3</math></td> <td><math>\pm</math>---</td> </tr> <tr> <td>1 PLACE</td> <td><math>\pm</math>---</td> <td><math>\pm</math>---</td> </tr> <tr> <td colspan="3">ANGULAR <math>\pm 3^\circ</math></td> </tr> </table>		mm	INCH	4 PLACES	$\pm$ ---	$\pm$ ---	3 PLACES	$\pm$ ---	$\pm$ ---	2 PLACES	$\pm 0.3$	$\pm$ ---	1 PLACE	$\pm$ ---	$\pm$ ---	ANGULAR $\pm 3^\circ$			MM ONLY	NTS	METRIC	
			mm	INCH																					
		4 PLACES	$\pm$ ---	$\pm$ ---																					
3 PLACES	$\pm$ ---	$\pm$ ---																							
2 PLACES	$\pm 0.3$	$\pm$ ---																							
1 PLACE	$\pm$ ---	$\pm$ ---																							
ANGULAR $\pm 3^\circ$																									
	DRAFT WHERE APPLICABLE MUST REMAIN WITHIN DIMENSIONS	SEE TABLE	DRAWN BY: DS0H CHECKED BY: KCLING APPROVED BY: SKT0H DATE: 1997/04/01 DATE: 1997/05/06 DATE: 1997/05/08	TITLE	EBBI, 1.27MM PITCH RECEPTACLE, R/A																				
				MATERIAL NO. MOLEX INCORPORATED	DOCUMENT NO.	SD-87552-007																			