



Chipsmall Limited consists of a professional team with an average of over 10 year of expertise in the distribution of electronic components. Based in Hongkong, we have already established firm and mutual-benefit business relationships with customers from,Europe,America and south Asia,supplying obsolete and hard-to-find components to meet their specific needs.

With the principle of “Quality Parts,Customers Priority,Honest Operation,and Considerate Service”,our business mainly focus on the distribution of electronic components. Line cards we deal with include Microchip,ALPS,ROHM,Xilinx,Pulse,ON,Everlight and Freescale. Main products comprise IC,Modules,Potentiometer,IC Socket,Relay,Connector.Our parts cover such applications as commercial,industrial, and automotives areas.

We are looking forward to setting up business relationship with you and hope to provide you with the best service and solution. Let us make a better world for our industry!



## Contact us

Tel: +86-755-8981 8866 Fax: +86-755-8427 6832

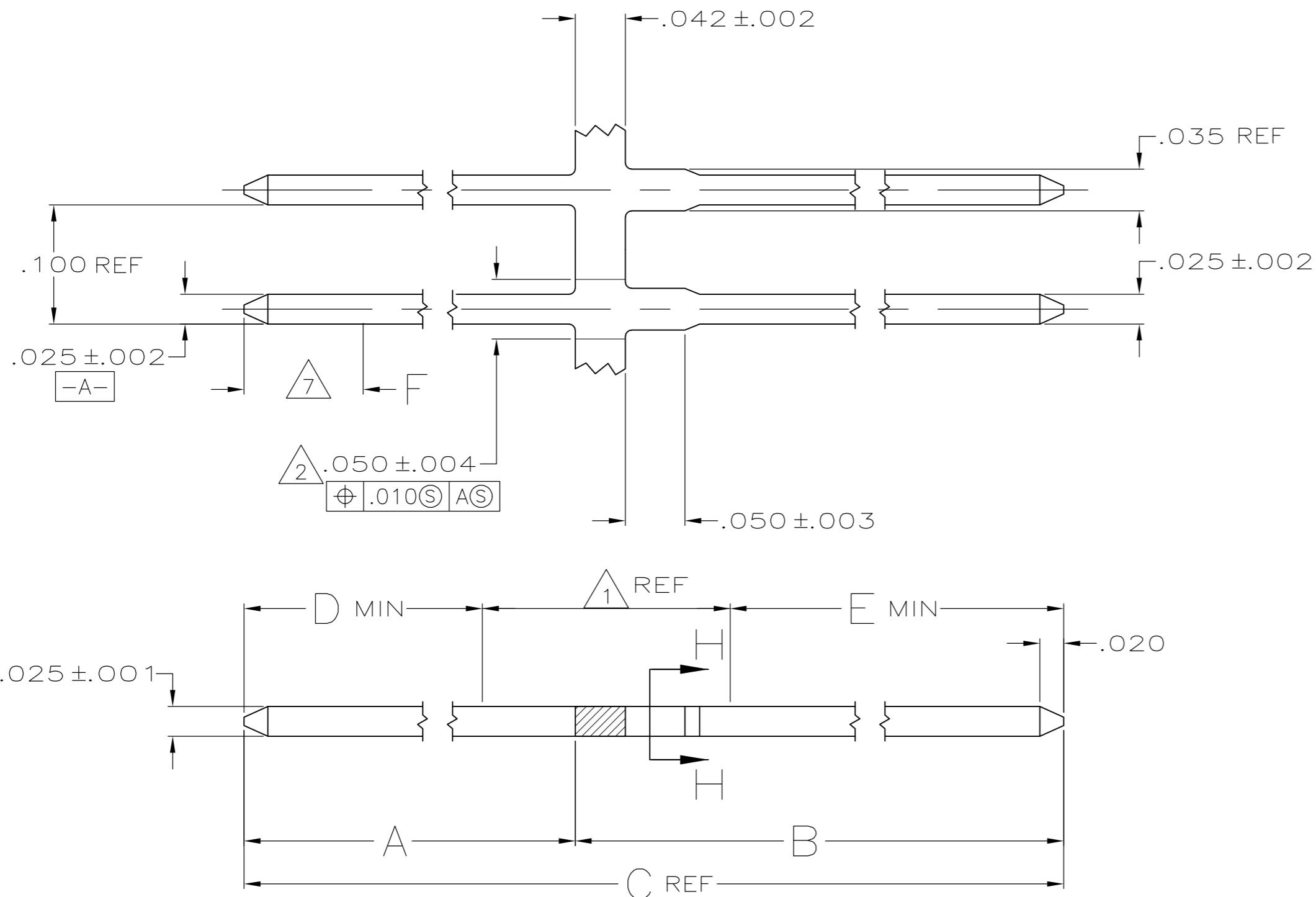
Email & Skype: info@chipsmall.com Web: www.chipsmall.com

Address: A1208, Overseas Decoration Building, #122 Zhenhua RD., Futian, Shenzhen, China

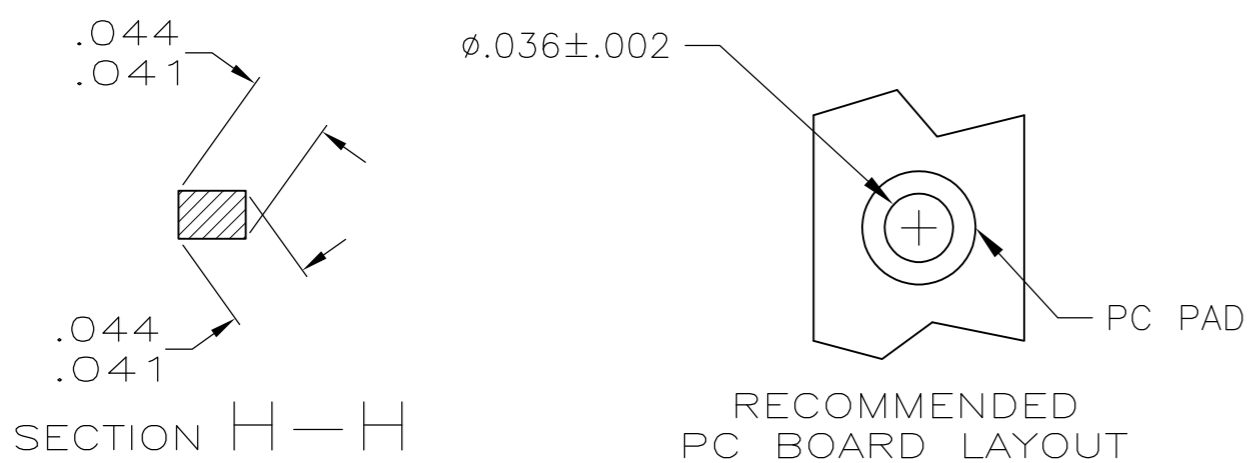


THIS DRAWING IS UNPUBLISHED. RELEASED FOR PUBLICATION  
 © COPYRIGHT - By - ALL RIGHTS RESERVED.

LOC		DIST		REVISIONS			
P	LTR	DESCRIPTION		DATE	DWN	APVD	
	F3	REVISED PER ECO-11-004917		11MAR11	RK	HMR	



- 1 THE AREA BETWEEN D & E WILL BE PLATED WITH .000050 MIN NICKEL
- 2 APPLICATOR CUT-OFF DIMENSION.
- 3 .000030 MIN GOLD OVER .000050 MIN NICKEL
- 4 .000100-.000200 MATTE TIN-LEAD OVER .000050 NICKEL.
- 5 .000015 MIN GOLD OVER .000050 MIN NICKEL.
- 6 .000050 MIN GOLD OVER .000050 MIN NICKEL.
- 7 POINT OF MEASUREMENT FOR PLATING THICKNESS.
- 8 .000100-.000200 MATTE TIN OVER .000050 NICKEL.
- 9 ROHS 2002/95/EC COMPLIANT.
- 10 OBSOLETE PARTS: OBSOLETE CIS STREAMLINING PER D.RENAUD/D.SINISI



OBSOLETE	.100	8	6	.125	.200	.483	.165	.318	9	5-87623-8
	.100	8	6	.160	.200	.828	.550	.278	9	5-87623-7
	.100	8	6	.220	.200	.628	.350	.278	9	5-87623-6
	.100	8	6	.280	.200	.688	.410	.278	9	5-87623-5
OBSOLETE	.100	8	5	.125	.200	.443	.165	.278	9	5-87623-4
	.100	8	5	.160	.200	.828	.550	.278	9	5-87623-3
	.100	8	5	.160	.200	1.016	.738	.278	9	5-87623-2
OBSOLETE	.100	8	3	.125	.200	.443	.165	.278	9	5-87623-1
	.100	4	6	.125	.200	.483	.165	.318		87623-8
OBSOLETE	.100	4	6	.160	.200	.828	.550	.278		87623-7
OBSOLETE	.100	4	6	.220	.200	.628	.350	.278		87623-6
OBSOLETE	.100	4	6	.280	.200	.688	.410	.278		87623-5
OBSOLETE	.100	4	5	.125	.200	.443	.165	.278		87623-4
	.100	4	5	.160	.200	.828	.550	.278		87623-3
OBSOLETE	.100	4	5	.160	.200	1.016	.738	.278		87623-2
OBSOLETE	.100	4	3	.125	.200	.443	.165	.278		87623-1
F	FINISH OVER AREA E	FINISH OVER AREA D	E	D	C	B	A	PART NUMBER		

SUPERSEDED BY 4-87022-1

THIS DRAWING IS A CONTROLLED DOCUMENT.

DWN: S. A. Shuey 11Dec96  
 CHK: -  
 APVD: S. A. Shuey 11Dec96  
 PRODUCT SPEC: -  
 APPLICATION SPEC: -  
 MATERIAL: PHOS BRONZE  
 FINISH: SEE TABLE  
 WEIGHT: -  
 CUSTOMER DRAWING

TE Connectivity  
 NAME: POST, MOD II  
 SIZE: A2  
 CAGE CODE: 00779  
 DRAWING NO: C-87623  
 RESTRICTED TO: -  
 SCALE: 10:1  
 SHEET: 1 of 1  
 REV: F3