



Chipsmall Limited consists of a professional team with an average of over 10 year of expertise in the distribution of electronic components. Based in Hongkong, we have already established firm and mutual-benefit business relationships with customers from,Europe,America and south Asia,supplying obsolete and hard-to-find components to meet their specific needs.

With the principle of “Quality Parts,Customers Priority,Honest Operation,and Considerate Service”,our business mainly focus on the distribution of electronic components. Line cards we deal with include Microchip,ALPS,ROHM,Xilinx,Pulse,ON,Everlight and Freescale. Main products comprise IC,Modules,Potentiometer,IC Socket,Relay,Connector.Our parts cover such applications as commercial,industrial, and automotives areas.

We are looking forward to setting up business relationship with you and hope to provide you with the best service and solution. Let us make a better world for our industry!



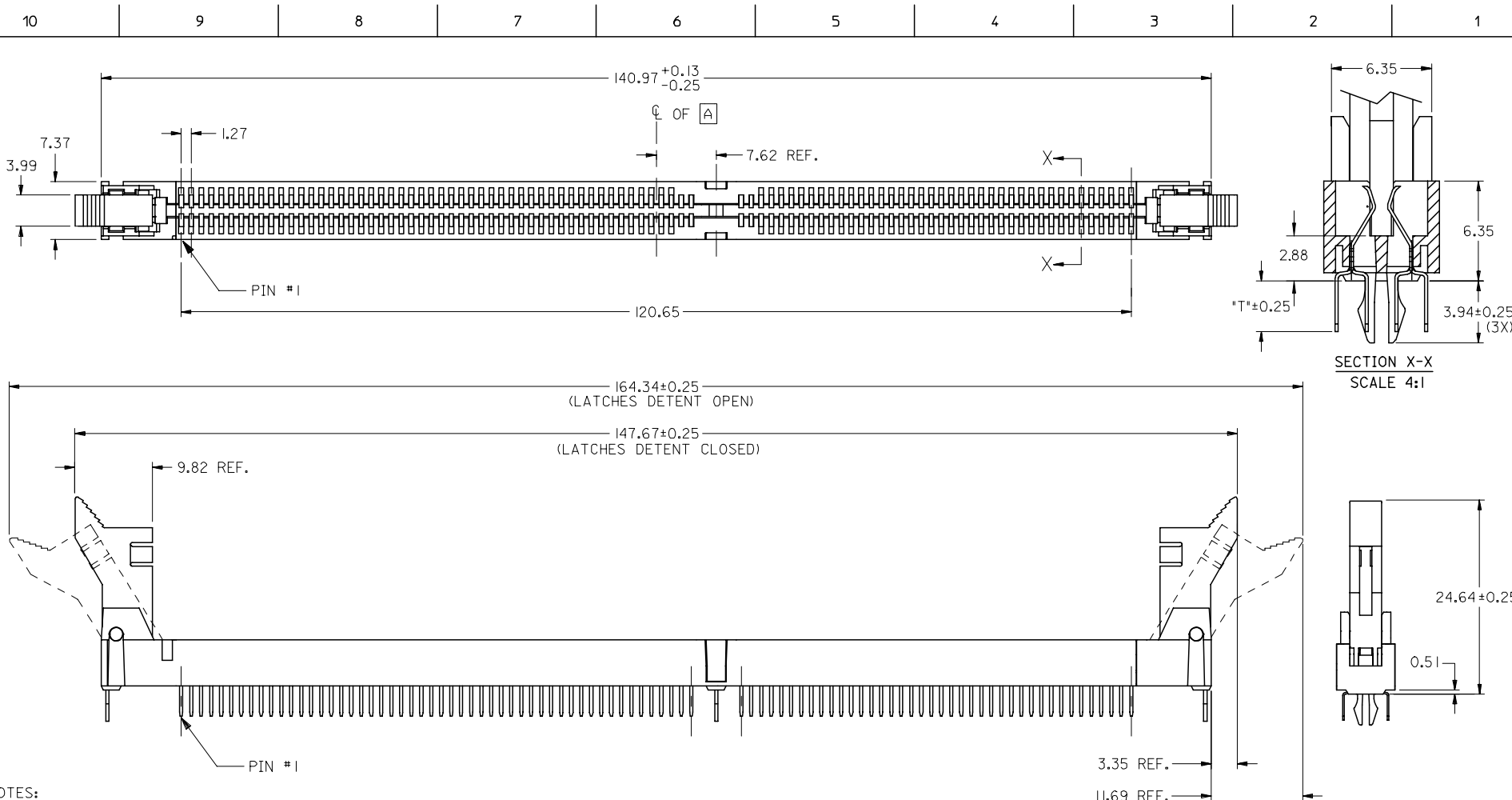
Contact us

Tel: +86-755-8981 8866 Fax: +86-755-8427 6832

Email & Skype: info@chipsmall.com Web: www.chipsmall.com

Address: A1208, Overseas Decoration Building, #122 Zhenhua RD., Futian, Shenzhen, China





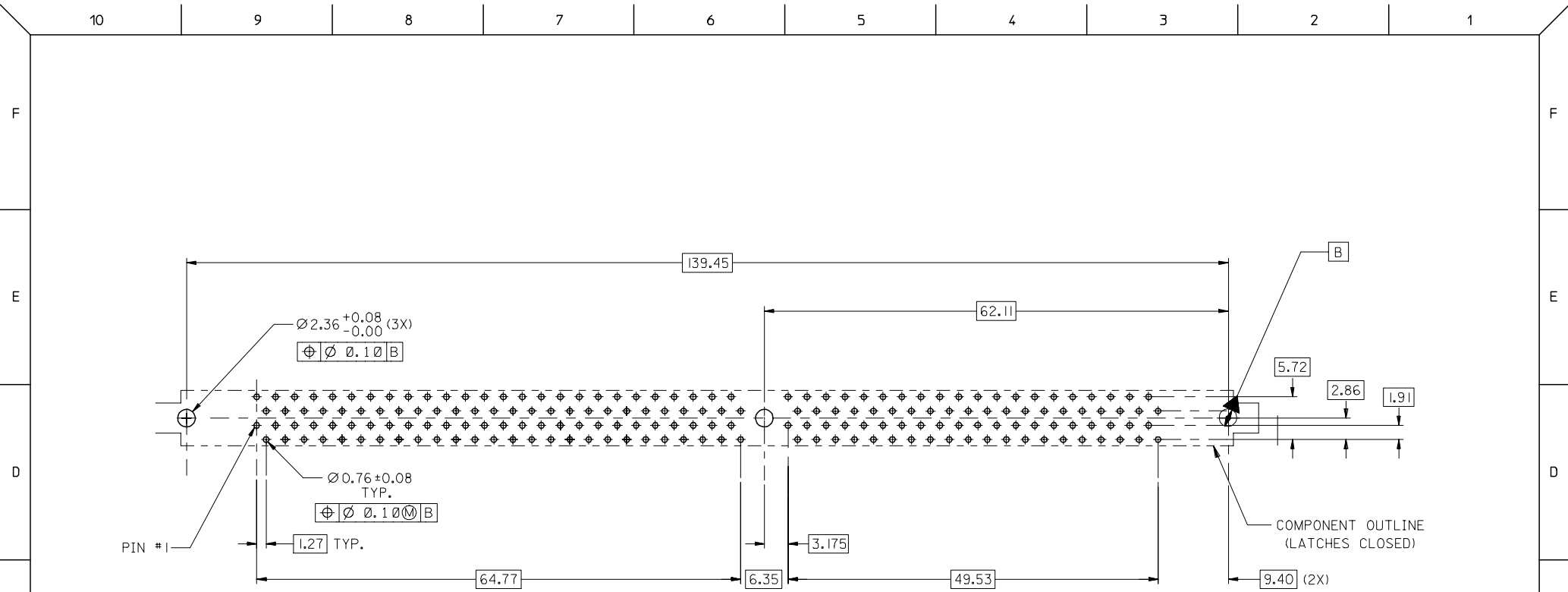
NOTES:

- CARD SLOT ACCEPTS 1.27 ± 0.10 MM MODULE THICKNESS. (MEASURED OVER P.C. PADS).
- REFER TO PRODUCT SPEC. PS-87736-003 FOR PERFORMANCE SPECIFICATIONS.
- RECOMMENDED MODULE LAYOUT SHALL BE PER M0-206.
- RECOMMENDED PLATING ON MODULE PADS: $0.76 \mu\text{M}$ MIN HARD GOLD (Au) OVER $2.0 \mu\text{M}$ MIN NICKEL (Ni).
- PRODUCT WILL HAVE DATE CODE STAMPED ON SIDE OF HOUSING.

MATERIALS:
 HOUSING - LCP, GLASS FILLED, UL94V-0, COLOR: BLACK
 TERMINAL- COPPER ALLOY
 LATCHES - HIGH TEMP NYLON, GLASS FILLED, UL94V-0

PLATING:
 CONTACT AREA: SEE TABLE IN SHEET 3.
 SOLDER TAILS: TIN :THICKNESS: $1.91 \mu\text{M}/(75 \mu\text{IN})$ MIN.
 UNDERPLATE: $1.27 \mu\text{M}/(50 \mu\text{IN})$ MIN NICKEL (Ni).

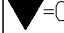
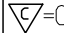
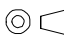

ADD DIMENSION EC NO: S2007-0163 2006/08/17 DRWN:CMTEO CHKD:SHLENI 2006/08/17 APPR:GJLEE 2006/08/18	DESCRIPTION REV	QUALITY SYMBOLS ▽=0 ▽C=0	GENERAL TOLERANCES (UNLESS SPECIFIED)	DIMENSION STYLE MM ONLY	SCALE NTS	DESIGN UNITS METRIC	THIRD ANGLE PROJECTION
			4 PLACES ± --- ± ---	DRAWN BY MLONG	DATE 2000/05/10	TITLE DDR DIMM, 1.27MM PITCH 184 CKTS, SINGLE KEY	
			3 PLACES ± --- ± ---	CHECKED BY SQUEK	DATE 2000/05/11		
			2 PLACES ± 0.15 ± ---	APPROVED BY SKTOH	DATE 2000/05/12	MATERIAL NO. SD-87636-001	SHEET NO. 1 OF 4
		1 PLACE ± --- ± ---	ANGULAR ± 3 °	SEE TABLE			
			DRAFT WHERE APPLICABLE MUST REMAIN WITHIN DIMENSIONS				



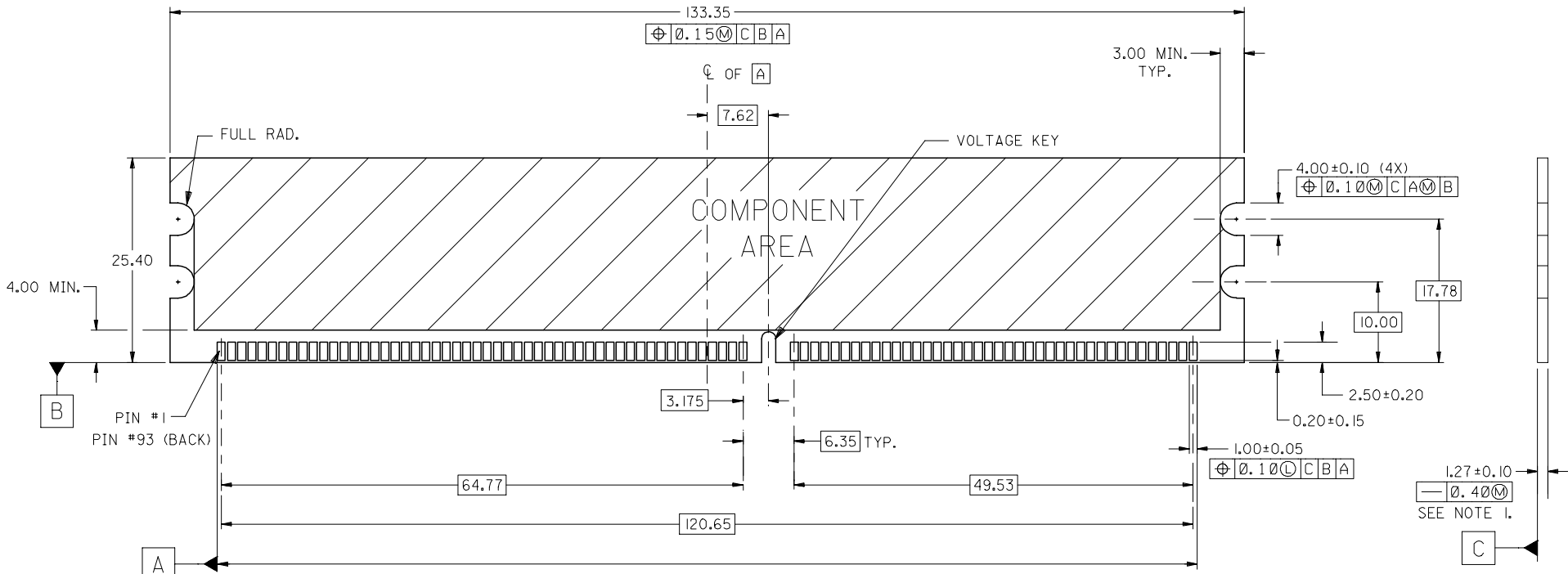
RECOMMENDED P.C. BOARD HOLE PATTERN
(CONNECTOR SIDE)

ADD DIMENSION EC NO: S2007-0163 DRWN: CMTEO CHKD: SHLENI APPR: GGLEE	2006/08/17 2006/08/17 2006/08/18	DESCRIPTION REV 1	QUALITY SYMBOLS ▽=0 ◻=0	GENERAL TOLERANCES (UNLESS SPECIFIED)		DIMENSION STYLE MM ONLY		SCALE NTS	DESIGN UNITS METRIC	THIRD ANGLE PROJECTION
					mm	INCH	DRAWN BY MLONG		TITLE DDR DIMM, 1.27MM PITCH 184 CKTS, SINGLE KEY	
				4 PLACES	± ---	± ---	CHECKED BY SQUEK		DATE 2000/05/11	
				3 PLACES	± ---	± ---	APPROVED BY SKTOH		DATE 2000/05/12	
				2 PLACES ± 0.15 ± ---		MATERIAL NO. SEE TABLE		DOCUMENT NO. SD-87636-001		
				1 PLACE ± --- ± ---		SIZE A3		SHEET NO. 2 OF 4		
				ANGULAR ± 3°		THIS DRAWING CONTAINS INFORMATION THAT IS PROPRIETARY TO MOLEX INCORPORATED AND SHOULD NOT BE USED WITHOUT WRITTEN PERMISSION				
DRAFT WHERE APPLICABLE MUST REMAIN WITHIN DIMENSIONS										

PART NUMBER	DATUM VOLTAGE KEY	PACKAGING TYPE	DIM "T"	RECOMMENDED PCB THICKNESS	LATCH COLOR	CONTACT AREA PLATING
87636-2001	CENTER (1.8V)	TRAY	3.23	2.36	BEIGE	0.38uM/15uIN MIN. GOLD
87636-2002	LEFT (2.5V)					
87636-2011	CENTER (1.8V)					
87636-2012	LEFT (2.5V)					
87636-3001	CENTER (1.8V)		3.23	2.36	BLACK	0.76uM/30uIN MIN. GOLD
87636-3002	LEFT (2.5V)					
87636-3011	CENTER (1.8V)					
87636-3012	LEFT (2.5V)					
87636-2102	LEFT (2.5V)		3.23	2.36	BLACK	0.38uM/15uIN MIN. GOLD

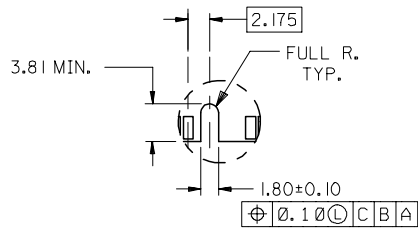
ADD DIMENSION EC NO: S2007-0163 DRWN:CMTEO 2006/08/17 CHKD:SHLENI 2006/08/17 APPR:GJLEE 2006/08/18	QUALITY SYMBOLS  = 0  = 0	GENERAL TOLERANCES (UNLESS SPECIFIED)		DIMENSION STYLE MM ONLY		SCALE NTS	DESIGN UNITS METRIC	 THIRD ANGLE PROJECTION		
			mm	INCH	DRAWN BY	DATE	DDR DIMM, 1.27MM PITCH 184 CKTS, SINGLE KEY			
		4 PLACES	± ---	± ---	MLONG	2000/05/10				
		3 PLACES	± ---	± ---	CHECKED BY	DATE	 MOLEX INCORPORATED			
		2 PLACES	± 0.15	± ---	SQUEK	2000/05/11				
1 PLACE	± ---	± ---	APPROVED BY	DATE	MATERIAL NO. SKT0H 2000/05/12		DOCUMENT NO. SD-87636-001		SHEET NO. 3 OF 4	
DRAFT WHERE APPLICABLE MUST REMAIN WITHIN DIMENSIONS			SEE TABLE		THIS DRAWING CONTAINS INFORMATION THAT IS PROPRIETARY TO MOLEX INCORPORATED AND SHOULD NOT BE USED WITHOUT WRITTEN PERMISSION					

10 9 8 7 6 5 4 3 2 1

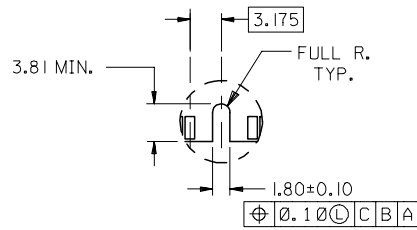


(OUTSIDE EDGE OF END PADS)

RECOMMENDED MODULE LAYOUT
184 CKT 1.8V SHOWN



OFFSET LEFT KEY



CENTERED KEY

NOTES:

1. STRAIGHTNESS OF MODULE APPLIES TO THE AREA FROM THE BOTTOM OF THE CARD UP 4.00 MM.
2. IF TIE BARS ARE ATTACHED TO PADS, THE TIE BAR SHOULD BE ON AN INTERNAL LAYER, SO THAT THE REMNANT CANNOT CAUSE DAMAGE TO THE CONTACTS.

ADD DIMENSION EC NO: S2007-0163 2006/08/17 DRWN:CMTEO 2006/08/17 CHKD:SHLENI 2006/08/18 APPR:GGLLEE	DESCRIPTION REV	QUALITY SYMBOLS ▽=0 ∇=0	GENERAL TOLERANCES (UNLESS SPECIFIED)	DIMENSION STYLE MM ONLY	SCALE NTS	DESIGN UNITS METRIC	THIRD ANGLE PROJECTION
			mm INCH	DRAWN BY MLONG	DATE 2000/05/10	TITLE DDR DIMM, 1.27MM PITCH 184 CKTS, SINGLE KEY	
			4 PLACES ± --- ± --- 3 PLACES ± --- ± --- 2 PLACES ± 0.15 ± --- 1 PLACE ± --- ± ---	APPROVED BY SQUEK	DATE 2000/05/11		
			ANGULAR ± 3 °	APPROVED BY SKTOH	DATE 2000/05/12	MATERIAL NO. MOLEX	DOCUMENT NO. SD-87636-001
F1	REV		DRAFT WHERE APPLICABLE MUST REMAIN WITHIN DIMENSIONS	SIZE A3	THIS DRAWING CONTAINS INFORMATION THAT IS PROPRIETARY TO MOLEX INCORPORATED AND SHOULD NOT BE USED WITHOUT WRITTEN PERMISSION		

9 8 7 6 5 4 3 2 1