



Chipsmall Limited consists of a professional team with an average of over 10 year of expertise in the distribution of electronic components. Based in Hongkong, we have already established firm and mutual-benefit business relationships with customers from,Europe,America and south Asia,supplying obsolete and hard-to-find components to meet their specific needs.

With the principle of “Quality Parts,Customers Priority,Honest Operation,and Considerate Service”,our business mainly focus on the distribution of electronic components. Line cards we deal with include Microchip,ALPS,ROHM,Xilinx,Pulse,ON,Everlight and Freescale. Main products comprise IC,Modules,Potentiometer,IC Socket,Relay,Connector.Our parts cover such applications as commercial,industrial, and automotives areas.

We are looking forward to setting up business relationship with you and hope to provide you with the best service and solution. Let us make a better world for our industry!



Contact us

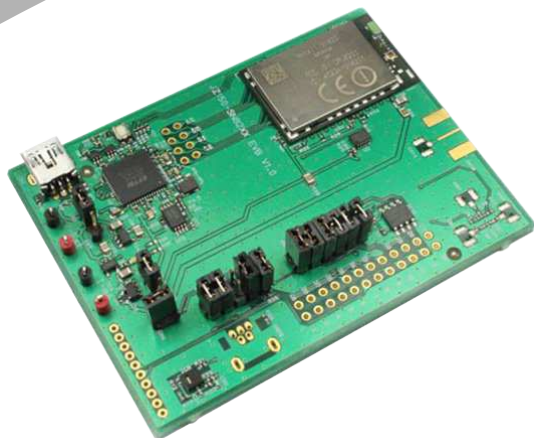
Tel: +86-755-8981 8866 Fax: +86-755-8427 6832

Email & Skype: info@chipsmall.com Web: www.chipsmall.com

Address: A1208, Overseas Decoration Building, #122 Zhenhua RD., Futian, Shenzhen, China



SN8200 EVK+ Wi-Fi Module Evaluation Kit



The SN8200 EVK+ facilitates evaluation of and software development around the SN8200 Wi-Fi Network Controller Module. Major enhancements from the previous SN8200 EVK include:

- Support for the latest Murata EZ Web Wizzard™ software as well as all previous software releases
- Support of the Broadcom WICED SDK
- Jumper switches that easily connect the on-board module to the customer's target host MCU/CPU
- On-board serial flash for OTA software development

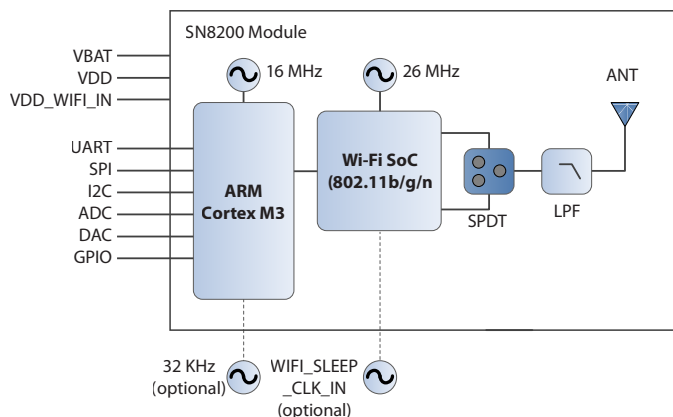
SN8200 Module Features

- 2.4GHz IEEE 802.11b/g/n
- Wi-Fi® Chipset: Broadcom BCM43362
- MCU: ST Microelectronics STM32 ARM Cortex-M3
- Supports WPA/WPA2 PSK
- Supports built-in TCP/IP Stack, HTTP, Javascript, and Web Server with SNIC software package
- Supports AP/STA Dual mode
- Supports custom web pages with Murata EZ Web Wizzard™ Software
- Supports Broadcom WICED SDK 2.2

Applications

- Home Automation & Home Energy Management Systems
- Smart Appliances
- Industrial Control and Monitoring
- Medical and Healthcare

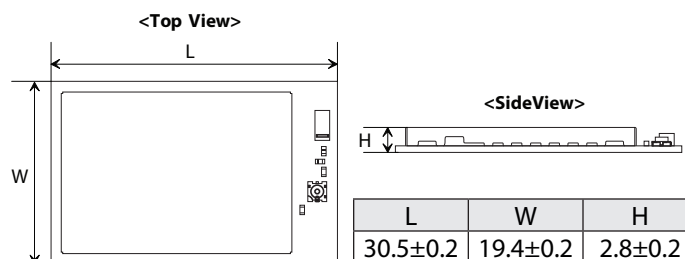
Module Block Diagram

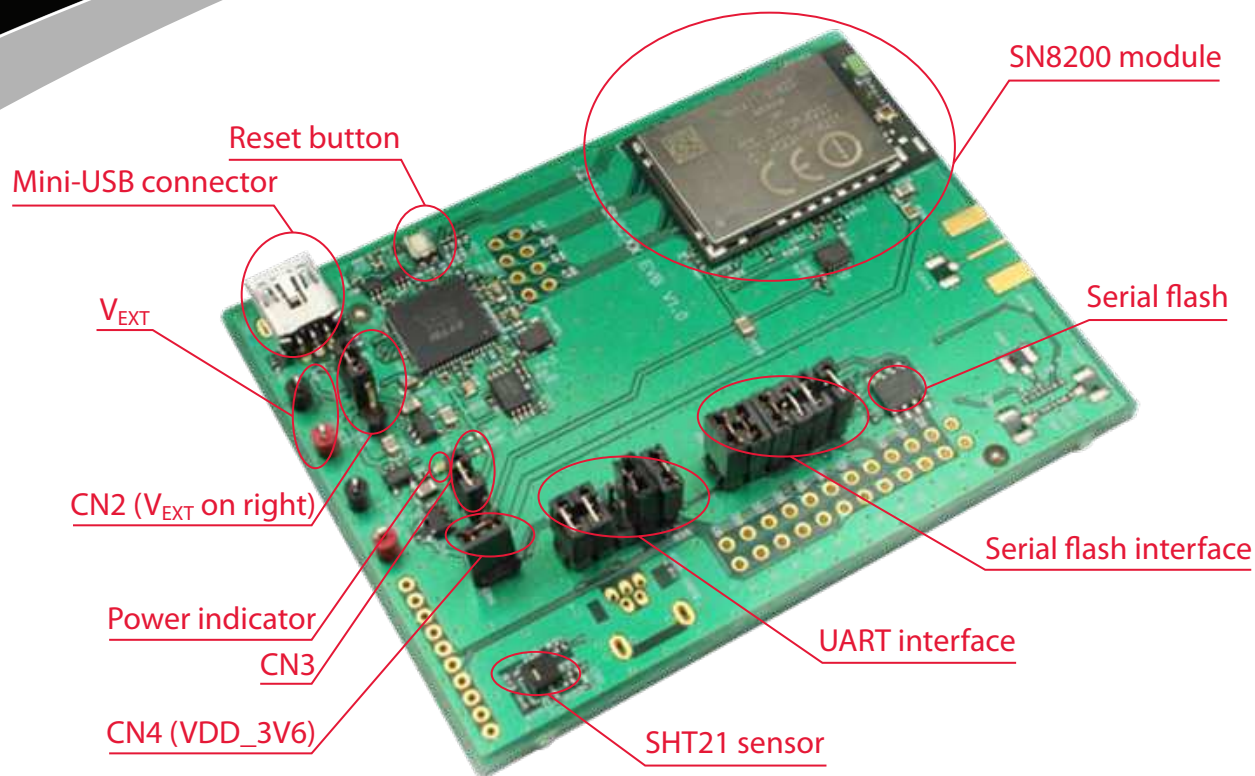


Module Specifications

Technology	2.4GHz IEEE 802.11b/g/n
Antenna Configuration	On-board
Transmit power	+18 dBm @b mode/11Mbps
Max receive sensitivity	-96dbm
Host Interface	UART, SPI
Sensor applications support	GPIO, I2C, ADC, DAC
Operating Temperature	-30°C to +85°C

Module Dimensions (mm)





Evaluation Board Features

- SN8200 Wi-Fi Network Controller
- Mini-USB connector supporting USB-JTAG and USB-serial interfaces
- Pads for headers to access the I/O pins of the SN8200 module
- Serial flash (8M bits) and interface header
- SHT21 temperature and relative humidity sensor
- UART interface header

Ordering Information

Model Number	Description	Part Number
SN8200	Module	88-00151-00
SN8200 EVK+	Evaluation Kit	88-00151-95

